



Model No.	OSBH30E18G3-XXXXS4C1A-X
REV.	B2

PRODUCT SPECIFICATION FOR **LED Ribbon Light**

Descriptions:

- Linear separable LED strip on flexible printed circuit board with self-adhesive back
- Long life, easy Installation
- Voltages available 12VDC
- LED type SMD 5050

Features:

- Available in red, orange, yellow, green, blue, white, etc
- Directly use on line voltage
- Low power consumption, high intensity
- Energy saving
- Excellent beam control
- Long life

Application:

- Auto lighting
- Channel letter signs
- Indirect accent décor light
- Large area back lighting
- Under counter light
- Decorate building's contour
- Substitute neon light

Product Picture:





Model No.	OSBH30E18G3-XXXXS4C1A-X
REV.	B2

Device Selection Guide

Module No.	Color	Dom. Wavelength (Typ.)	Intensity / Per LED (Typ.)
OSR5RTS4C1A	Red	625±5nm	1120 mcd
OSO5STS4C1A	Orange	605±5nm	1120 mcd
OSY5RTS4C1A	Yellow	590±5nm	1120 mcd
OSG5DTS4C1A	Green	525±5nm	3000 mcd
OSB5STS4C1A	Blue	470±5nm	1560mcd
OSW5DTS4C1A	White	X=0.31;Y=0.32	7000mcd
OSM5DTS4C1A	Warm White	X=0.49;Y=0.45	5000mcd
OSK5DTS4C1A	Pink	X=0.49;Y=0.21	1900mcd
OSTCDBS4C1A	Red	625±5nm	750mcd
	Green	525±5nm	1120mcd
	Blue	470±5nm	400mcd

Absolute Maximum Ratings(Ta=25)

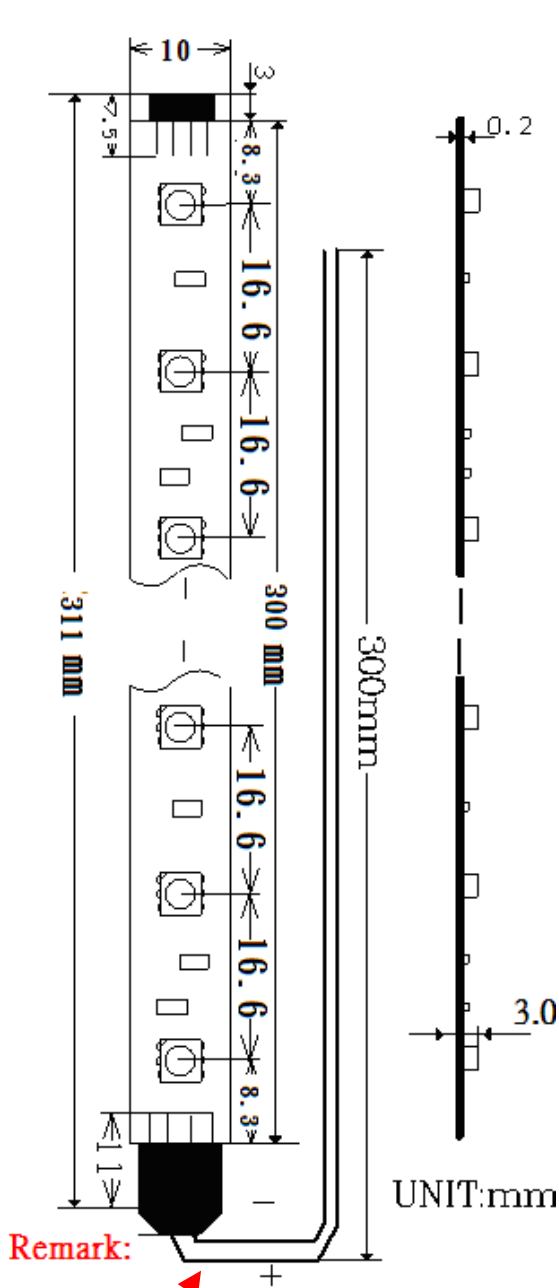
Items	Symbol	Values	Units
Operating Supply Range(DC)	V _{dc}	14	V
Input Current (DC)	I _i	0.54	A
Power Dissipation	P _a	7.56	W
LED Light Source Temperature	T _{led}	105	DegC
Operating Temperature	T _{ope}	-10 ~ +40	DegC
Storage Temperature	T _{sto}	-20 ~ +80	DegC

Typical Performance (Ta=25)

Items	Symbol	Min.	Typ.	Max.	Units
LED Module Power	P _m	-	4.32	7.56	w
Input Voltage(DC)	V _i	-	12	14	V
Product Input Current	I _f	-	0.36	0.54	A
Beam Pattern	BP	-	120	-	Deg
Total Length of Modules (Including Pin)	L _{mod.}	-	311	-	mm
Net Weight	Wei.	---	12	---	g

Model No.	OSBH30E18G3-XXXXS4C1A-X
REV.	B2

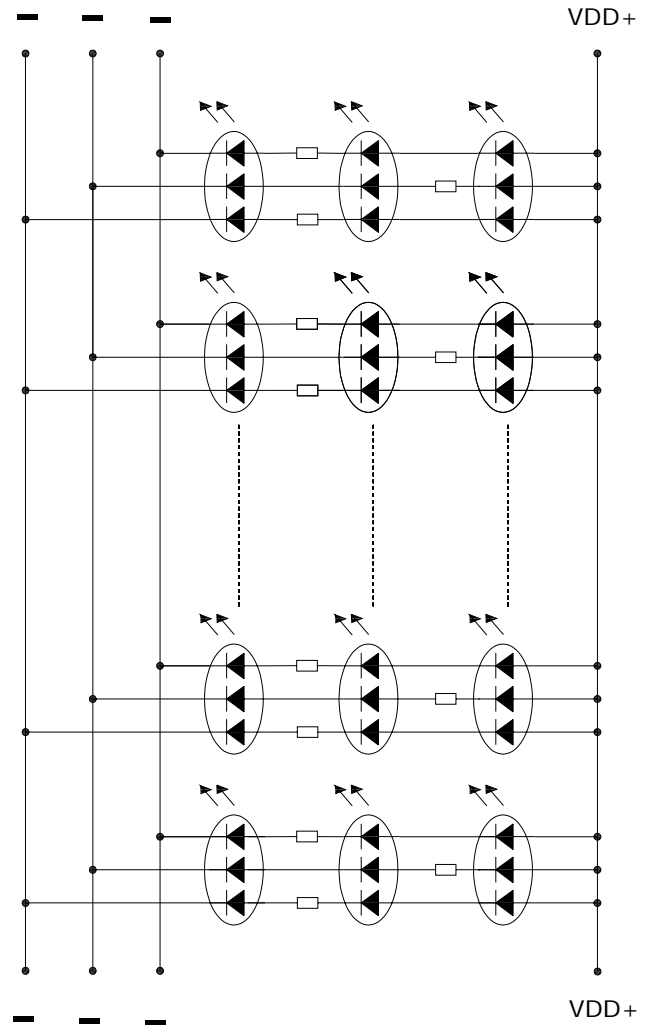
Product Dimensions:



Remark:

- 1) For single color, use 2-wire (Red, black) external connection wire in which three internal “-“ shorted.
- 2) For RGB color, use 4-wire (Yellow, Green, Red, Blue) external connection wire.

DC 12V





Model No.	OSBH30E18G3-XXXXS4C1A-X
REV.	B2

Packing information:

Box Dimensions
Unit: mm

