

# BPC

## BPC-8590

### Slim and Compact Book Size PC

#### **Features and Benefits:**

- Supports Core 2 Duo / Core Duo / Celeron® M Socket 478 on board for 65nm CPU (up to 2.16GHz)
- Intel® 945GME + ICH7R chipset
- Slim and compact size PC, only 62mm (2.44") high
- Perfect and space critical applications
- 4 serial ports with +5V / +12V
- One expansion slot (1 x PCI or 1 x PCI-E)
- Supports RAID function



**PROTECH SYSTEMS**

*It's the right choice*

No. 24, Lane 365, Yang Guang St., Nei Hu District, Taipei 114, Taiwan, R.O.C.

Tel: +886-2-8751-1111

Fax: +886-2-8751-1199

Email: [sales@protech.com.tw](mailto:sales@protech.com.tw)

<http://www.protech.com.tw>



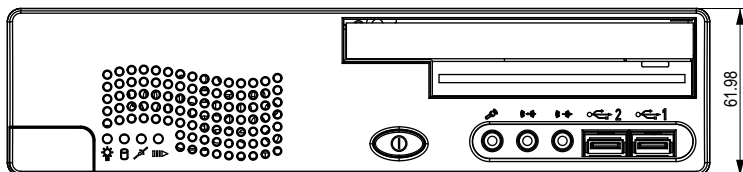
**ISO CERTIFIED**

**9001 14001**

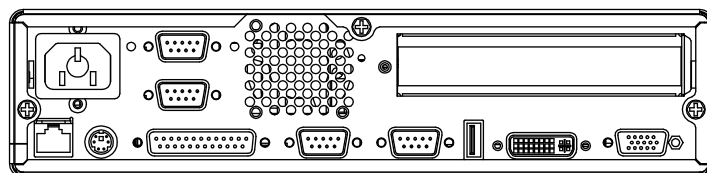
# BPC-8590

## Slim and Compact Book Size PC

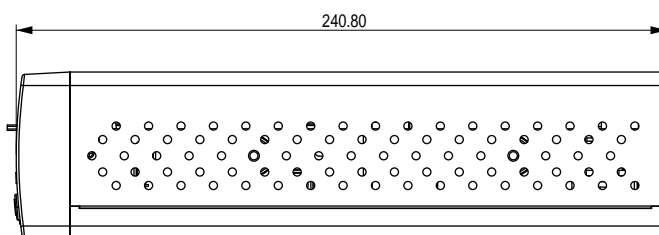
Front View



Rear View



Side View



### Specification

| System                   |  |
|--------------------------|--|
| <b>CPU Type</b>          | Intel® Core 2 Duo up to 2.0 GHz            |
| <b>Chipset</b>           | Intel® 945GME+ICH7R                        |
| <b>Memory Support</b>    | 2 x DDR-2 DIMM Socket (up to 2GB)          |
| <b>Power Supply</b>      | ATX 110W                                   |
| <b>System Weight</b>     | 3.3 kg (7.26lb)                            |
| <b>Dimension (WxHxD)</b> | 260 x 62 x 240 mm (10.24" x 2.44" x 9.45") |

### I/O Ports (Front side)

|                   |   |
|-------------------|---|
| <b>Drive Bays</b> | 1 x 2.5" SATA HDD & 1 x slim CD / DVD-ROM (optional) & 1 x slim FDD (optional) or 2 x 2.5" SATA HDD without CD / DVD-ROM, FDD |
| <b>USB</b>        | 2 x USB 2.0   |
| <b>Audio</b>      | Line-in / Line-out / MIC (Realtek ALC655, AC '97 Code)  |

### I/O Ports (Rear side)

|                         |   |
|-------------------------|---|
| <b>USB</b>              | 1 x USB 2.0   |
| <b>Serial Port</b>      | 4 x COM port, COM 2 for RS232/422/485                                     |
| <b>Parallel Port</b>    | (+5/+12, optional set with jumper)<br>1 x parallel port (SPP / EPP / ECP) |
| <b>Keyboard / Mouse</b> | 1 x PS/2 port with Y-cable  |

|                        |   |
|------------------------|---|
| <b>LAN</b>             | 1 x RJ-45, 10/100/1000 Mbps (Intel 82573) |
| <b>VGA</b>             | 1 x VGA                                   |
| <b>DVI</b>             | 1 x DVI                                   |
| <b>Expansion Slots</b> | 1 x PCI or 1 x PCI-E (optional)           |

### Environment

|                        |             |
|------------------------|-------------|
| <b>Operating Temp.</b> | 0° ~ 40°C   |
| <b>Storage Temp.</b>   | -20° ~ 60°C |
| <b>Humidity</b>        | 20% ~ 90%   |

### Ordering Information

|                    |   |
|--------------------|---|
| <b>BPC-8590-AW</b> | Book size PC (white color) with Core 2 Due MB, CD-ROM front bezel               |
| <b>BPC-8590-BW</b> | Book size PC (white color) with Core 2 Due MB, with CD-ROM / FDD front bezel    |
| <b>BPC-8590-SW</b> | Book size PC (white color) with Core 2 Due MB, without CD-ROM / FDD front bezel |
| <b>BPC-8590-AB</b> | Book size PC (black color) with Core 2 Due MB, CD-ROM front bezel               |
| <b>BPC-8590-BB</b> | Book size PC (black color) with Core 2 Due MB, with CD-ROM / FDD front bezel    |
| <b>BPC-8590-SB</b> | Book size PC (black color) with Core 2 Due MB, without CD-ROM / FDD front bezel |

### Certificate: CE, FCC CLASS B, UL

\* CPU,DDR2, FDD,HDD AND CD-ROM / DVD-ROM are available as optional items.

All of trademarks and brand names are the property of their owners. Trademark "Protech" is the property of Protech Systems Co., Ltd. All information contained in this document is subject to change without any prior notice. This catalog is copyrighted in Jan. 2008