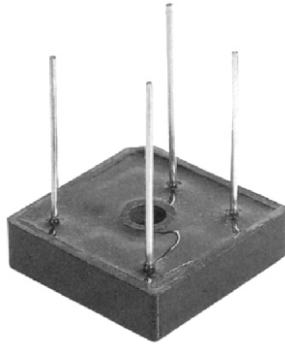


MP15,25,35 CW SERIES

15/25/35 AMPS.
SILICON BRIDGE RECTIFIERS



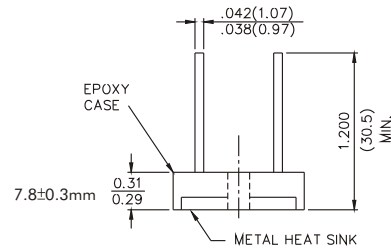
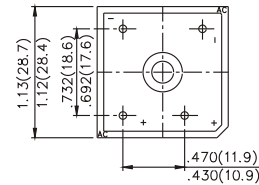
**CHENG-YI
ELECTRONIC**



FEATURES

- Rating to 1000V PRV
- 400 Amperes surge capability
- High efficiency
- Weight:0.7 ounce 20 grams
- For maximum heat dissipation
- Mounting: thru hole for #8 screw
- Electrically Isolated base 1800 Volt
- Case:Molded plastic isolated with heatsink internally

VOLTAGE RANGE
50 TO 1000 VOLTS PRV
CURRENT
15.25.35. Amperes



Dimensions in inches and (millimeters)
Withd wire leads suffix "W"

MAXIMUM RATINGS AND ELECTRICAL CHARACTERISTICS

Ratings at 25°C ambient temperature unless otherwise specified.
Single phase, half wave, 60Hz, resistive or inductive load.
For capacitive load, derate current by 20%.

MP 15/25/35		MP005W	MP01W	MP02W	MP04W	MP06W	MP08W	MP10W	UNITS
Maximum Recurrent Peak Reverse Voltage	V_{RRM}	50	100	200	400	600	800	1000	V
Maximum RMS Bridge Input Voltage	V_{RMS}	35	70	140	280	420	560	700	V
Maximum DC Blocking Voltage	V_{DC}	50	100	200	400	600	800	1000	V
Maximum Average Forward Output Current @ $T_C=55^\circ C$	MP12 MP25 MP35 $V_{(AV)}$				15 25 35				A
Peak Forward Surge Current 8.3 ms single half sine-wave superimposed on rated load (JEDEC Mehtod)	MP15 MP25 MP35 I_{FSM}				250 300 400				A
Maximum Forward Voltage per Bridge element	MP15 7.5A MP25 at IF 12.5A MP35 17.5A V_F				1.1				V
Maximum DC Reverse Current at Rated DC	I_R				5				μA
Blocking Voltage per Bridge element		@ $T_A=25^\circ C$ @ $T_A=100^\circ C$				200			μA
$I^2 t$ Rating for fusing ($t < 8.3ms$)	$I^2 t$				374/664				A ² S
Typical Thermal Resistance(Note.1)	$R\theta_{JC}$				2.0				$^\circ C/W$
Operating Temperature Range	T_J				-55 to +125				$^\circ C$
Storage Temperature Range	T_{STG}				-55 to +150				$^\circ C$

NOTE: 1. Mounted on a 11.8in² X 0.06 in thick (300mm² X 1.5mm thick) Copper plate.
2. Fast Recovery, Controlled avalanche bridges are available. Please consult with factory.

MP15,25,35 CW SERIES

15/25/35 AMPS.
SILICON BRIDGE RECTIFIERS



CHENG-YI
ELECTRONIC

RATING AND CHARACTERISTICS CURVES MP15,25,35CW SERIES

Fig. 1 - FORWARD DERATING CURVE

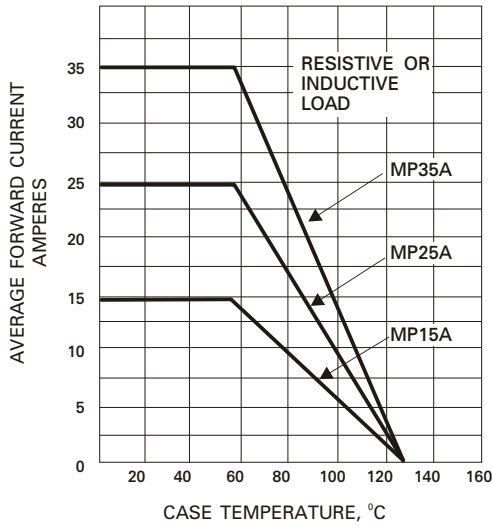


Fig. 2 - PAKK FORWARD SURGE CURRENT

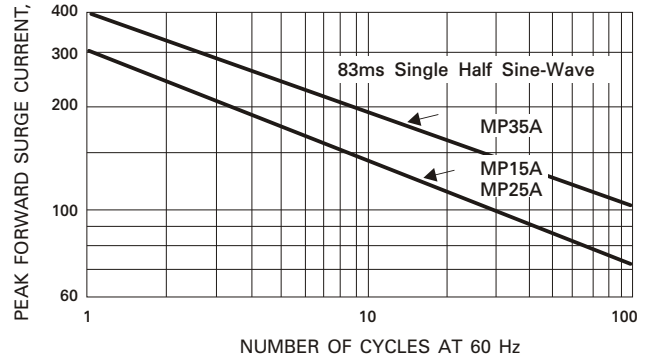


Fig. 3 - TYPICAL FORWARD CHARACTERISTICS

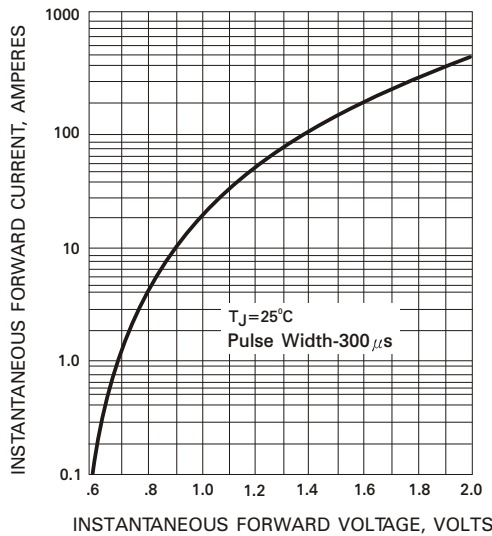


Fig. 4 - TYPICAL REVERSE CHARACTERISTICS

