



TAI-SAW TECHNOLOGY CO., LTD.

No. 3, Industrial 2nd Rd., Ping-Chen Industrial District,
Taoyuan, 324, Taiwan, R.O.C.

TEL: 886-3-4690038 FAX: 886-3-4697532

E-mail: tstsales@mail.taisaw.com Web: www.taisaw.com

Approval Sheet For Product Specification

Issued Date:

Product Name: SAW Filter 611MHz SMD 7.0x5.0mm

TST Parts No.:TA0341A

Customer Parts No.:_____

Company: _____
Division: _____
Approved by : _____
Date: _____

Checked by: _____ Elvis Chiu

Approval by: _____ Francis Chen

Date: _____ 2004/07/12



TAI-SAW TECHNOLOGY CO., LTD.

No. 3, Industrial 2nd Rd., Ping-Chen Industrial District,
Taoyuan, 324, Taiwan, R.O.C.

TEL: 886-3-4690038 FAX: 886-3-4697532

E-mail: tstsales@mail.taisaw.com Web: www.taisaw.com

SAW Filter 611 MHz

MODEL NO.: TA0341A

REV. NO.:1

A. MAXIMUM RATING:

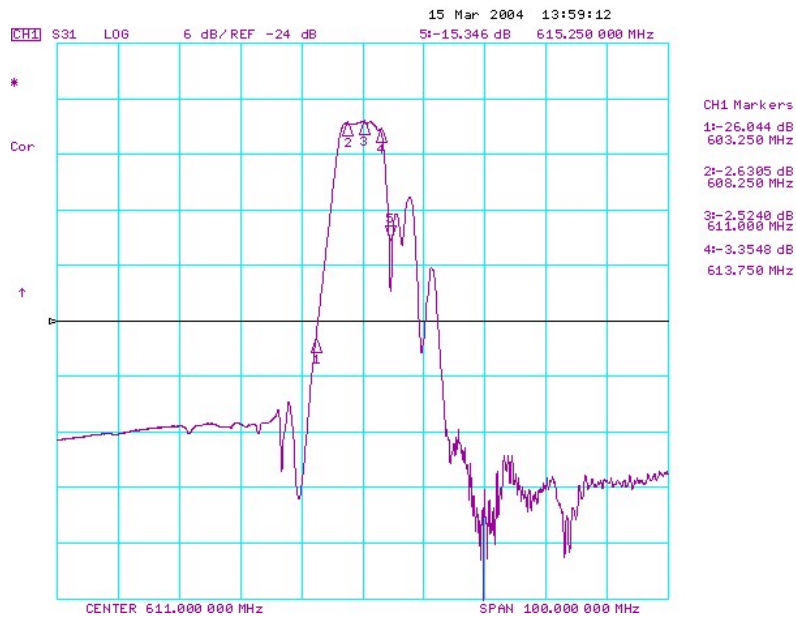
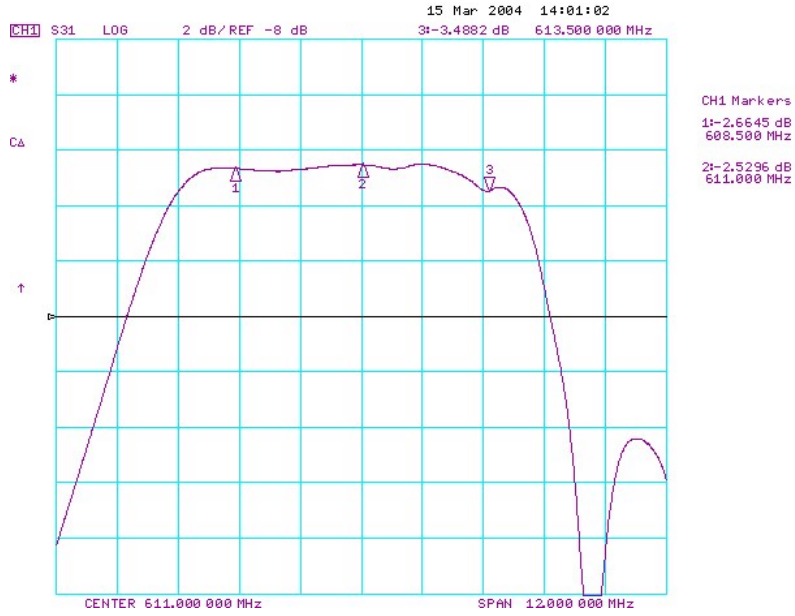
1. Input Power Level: 10 dB_m
2. DC voltage: 3 V
3. Storage Temperature: -20°C to +50°C

RoHS Compliant
Lead free
Lead-free soldering

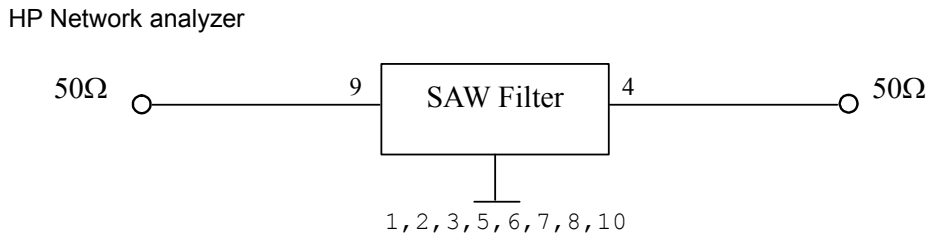
B. ELECTRICAL CHARACTERISTICS:

Item	Unit	Min.	Type.	Max.	
Center frequency Fc ¹⁾	MHz	-	611	-	
Insertion Loss IL	dB	-	2.7	5.0	
3dB Bandwidth BW _{-3dB}	MHz	7	7.8	-	
Passband Ripple ²⁾	dB	-	1.0	2	
Absolute Attenuation					
613.75	MHz	dB	-	3.5	4.2
608.25	MHz	dB	-	3.2	4.2
615.45	MHz	dB	9	12	-
603.05	MHz	dB	19	22	-
Operating Temperature Range	°C	-	25	-	
Source impedance Zs	(-	50	-	
Load impedance ZL	(-	50	-	
Notes	1) No matching circuit required 2) Fc±2.5MHz Peak-Peak 3) All spec on room temperature only				

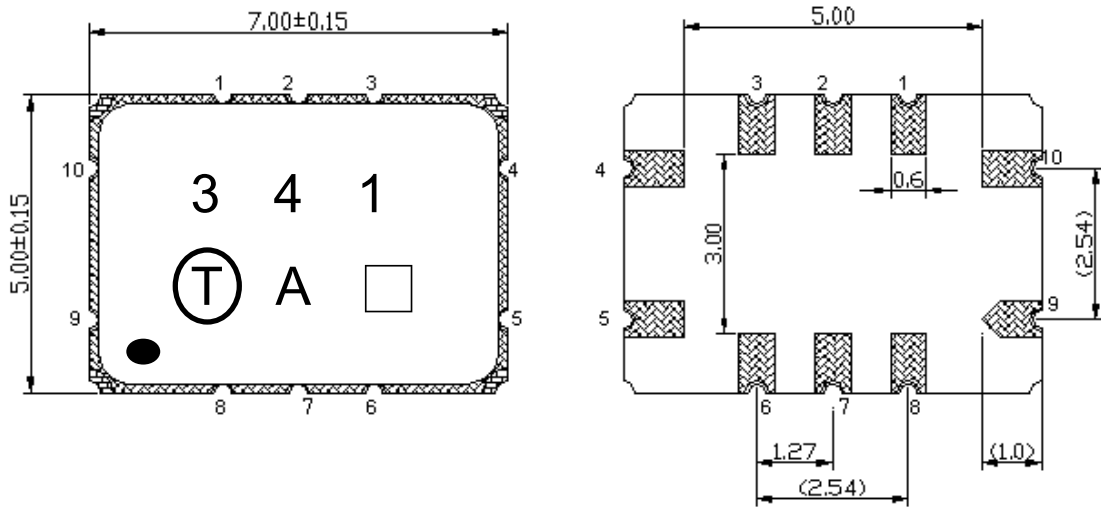
C. Frequency Characteristics :



D. MEASUREMENT CIRCUIT:



E. OUTLINE DRAWING:



Pin configuration:

9: Input

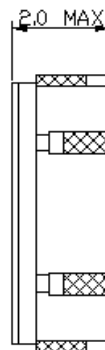
4: Output

1,2,3,5,6,7,8,10: Ground

□ : Date Code

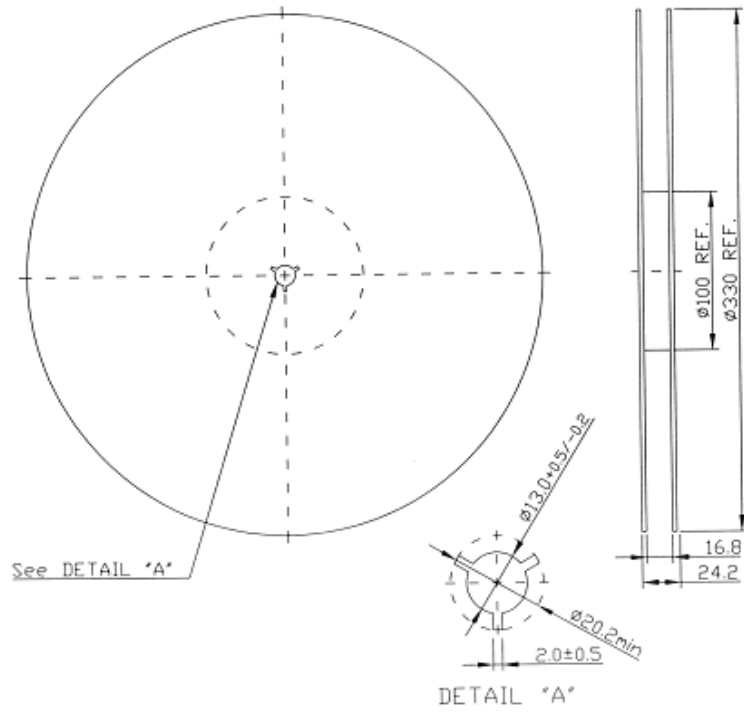
Unit: mm

● : Pin Index



F. PACKING:

1. REEL DIMENSION



2. TAPE DIMENSION

