

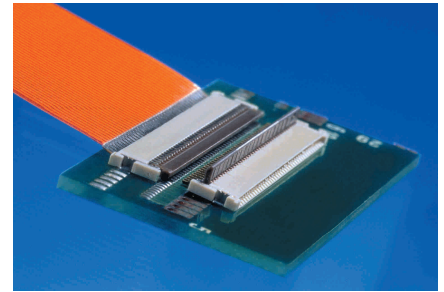
INTRODUCTION

Molex offers a wide variety of ultra low-profile SMT FFC/FPC connectors for tight packaging applications. Features include profile heights as low as 0.90mm (.035"), pull-type and flip-type actuators, straight and right-angle versions, and circuit sizes from 4–60. See Molex's website for further details, drawings, and the latest updates to our ultra low-profile FFC/FPC connector range.

Specifications:

- Current: 0.5A
- Voltage: 50V
- Circuit Size Range: 4–60
- Contact Resistance: 40mΩ max.
- Insulation Resistance: 50MΩ min.
- Withstanding Voltage: 250V AC/1 minute
- Packaging: Embossed Tape

molex® 0.30 and 0.50mm Pitch Ultra-Low Profile SMT FFC/FPC Connectors



New BackFlip™ 0.90mm (.035") Height Connector

SELECTION MATRIX

0.30mm (.012") Pitch FFC/FPC Connectors

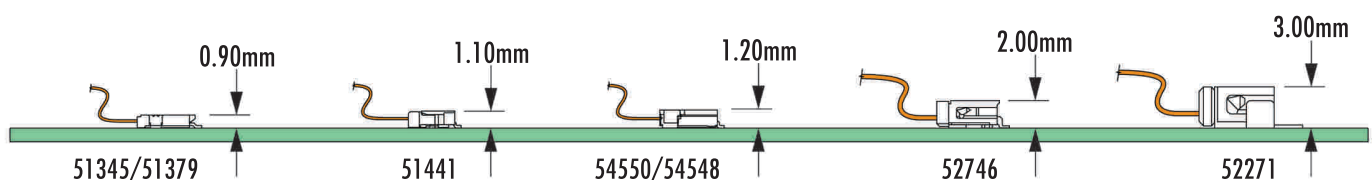
| | Description | Series Number * | Circuit Size | Actuator/Contact Type | Housing/Actuator Material (UL 94V-0) | FFC/FPC |
|--|---------------------------------------|-----------------|--|----------------------------|--------------------------------------|------------------|
| | Height: 1.30mm ZIF, Right Angle | 54809 | 11, 15, 19, 21, 25, 27, 31, 33, 39, 45, 51 | Easy-On™ Bottom Contact | LCP/PPS | 0.20mm Thickness |

0.50mm (.020") Pitch FFC/FPC Connectors

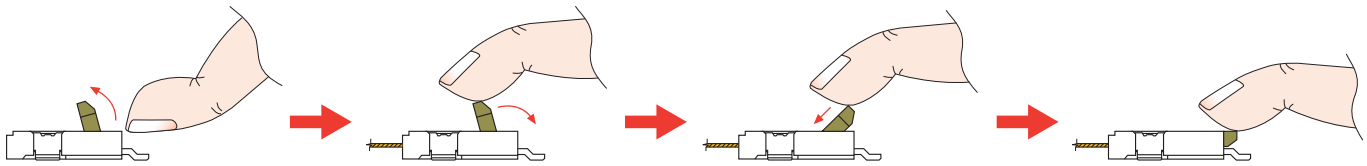
| | Description | Series Number * | Circuit Size | Actuator/Contact Type | Housing/Actuator Material (UL 94V-0) | FFC/FPC |
|--|---|-----------------|--|--------------------------------------|--------------------------------------|--|
| | Height: 0.90mm ZIF, Right Angle | 51345 | 4, 6, 17, 18, 40 | BackFlip™ Easy-On™ Top Contact | LCP/PPS | 0.12mm Thickness |
| | Height: 0.90mm ZIF, Right Angle | 51379 | 4, 5, 7, 12 | Pull Type Top Contact | LCP/PPS | 0.20mm Thickness |
| | Height: 1.10mm ZIF, Right Angle | 51441 | 6, 7, 8, 9, 10, 11, 12, 16, 17, 18, 20, 22, 24 | Easy-On™ Bottom Contact | LCP/PPS | 0.30mm Thickness |
| | Height: 1.20mm ZIF, Right Angle | 54550 | 5, 6, 7, 8, 9, 10, 11, 12, 13, 14, 15, 16, 17, 18, 19, 20, 21, 22, 24, 25, 26 | Pull Type Top Contact | LCP/PPS | 0.30mm Thickness (26 Ckt. = 0.28mm) |
| | Height: 1.20mm ZIF, Right Angle | 54548 | 5, 6, 7, 8, 9, 10, 11, 12, 13, 14, 15, 16, 17, 18, 19, 20, 21, 22, 24, 26 | Pull Type Bottom Contact | LCP/PPS | 0.30mm Thickness (26 Ckt. = 0.28mm) |
| | Height: 1.20mm Non-ZIF, Right Angle | 51281 | 5, 6, 8, 9, 10, 12, 14, 16, 18, 20, 22, 24, 26 | No Actuator Dual Contact | LCP (No Actuator) | 0.30mm Thickness |
| | Height: 1.30mm ZIF, Right Angle | 51296 | 8, 12, 14, 18, 45 | Easy-On™ Bottom Contact | LCP/Polyamide | 0.30mm Thickness |
| | Height: 4.05mm (Locked) ZIF, Vertical | 51374 | 10, 13, 15, 20, 26, 30, 33, 40, 45, 50, 60 | Easy-On™ Vertical | LCP/PPS | 0.30mm Thickness |

Note: Contact Molex for ordering details, plating options and additional circuit sizes.

FFC/FPC HEIGHT COMPARISON

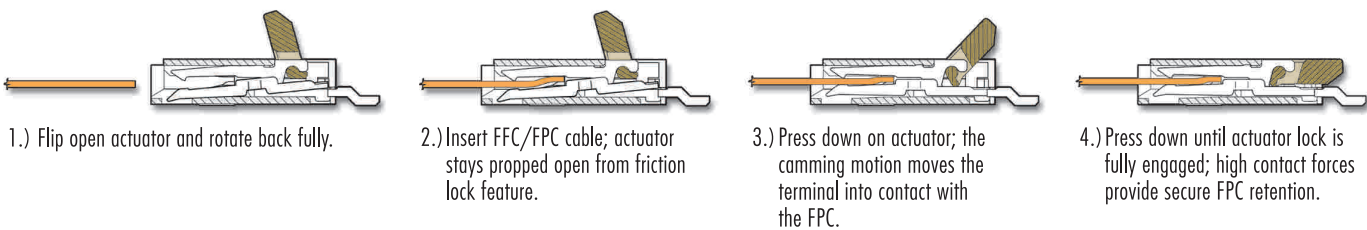


External View: Locking Feature



Internal View: Actuator on Contact

New 0.90mm (.035") Height BackFlip™ Connector Provides Space Saving and Easy Cable Insertion/Extraction



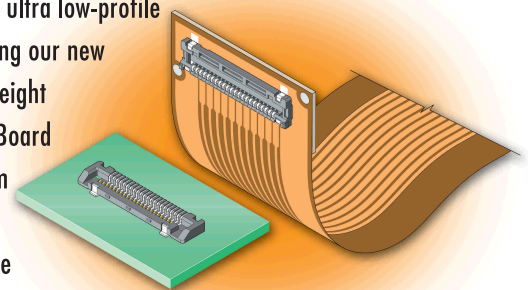
APPLICATIONS

- Cellular Phone
- Digital Still Camera
- Digital Camcorder
- PDA or PHS
- Voice Recorder
- GPS
- Portable Game Machine
- Any Low-Profile Mobile Device



ULTRA LOW-PROFILE FPC-to-BOARD

Molex offers other ultra low-profile connectors, including our new 0.95mm (.037") height single-row FPC-to-Board version on 0.40mm (.016") pitch. See Molex's website for more information.



| Plug | Receptacle |
|-------------|-------------|
| 500464-XXXX | 500463-XXXX |

Note: Circuit Sizes 07-22; see Molex's website for additional details.

See www.molex.com for drawings and details.



Bringing People & Technology Together, WorldwideSM

American Headquarters
2222 Wellington Ct,
Lisle, Illinois 60532 USA
Tel: 1-800-78MOLEX
amerinfo@molex.com

Far East North Headquarters
Yamato, Kanagawa, Japan
Tel: 81-462-65-2324
feninfo@molex.com

Far East South Headquarters
Jurong, Singapore
Tel: 65-6-268-6868
fesinfo@molex.com

European Headquarters
Munich, Germany
Tel: 49-89-413092-0
euroinfo@molex.com

Corporate Headquarters
2222 Wellington Ct,
Lisle, Illinois 60532 USA
Tel: 630-969-4550