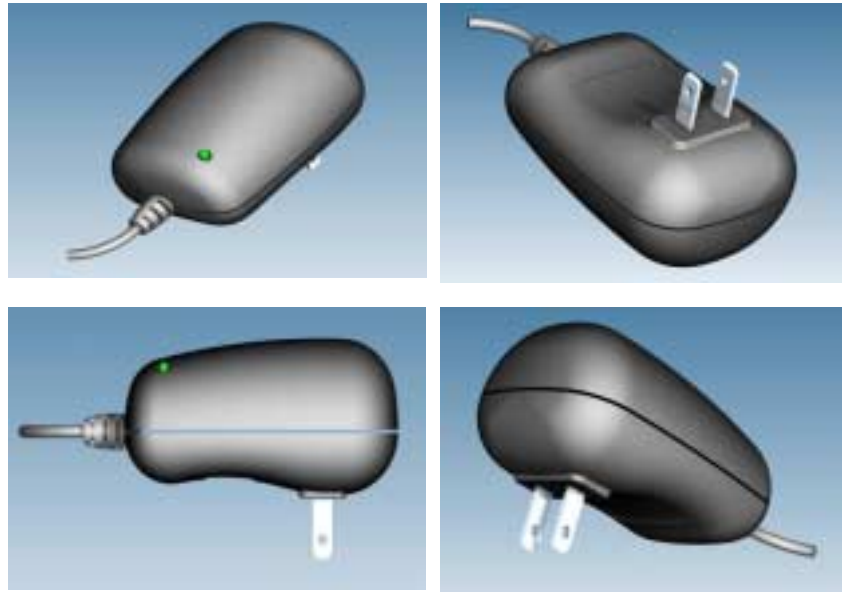


## FEATURES

- Cispr 22'B', Vcci'B', Fcc'B' Compliance
- Light Weight: 150g only
- Efficiency Over 70%
- Over-Voltage Protective Installation
- Short-circuit Protective Installation
- Protection Type: Auto-Recover
- Operating Temperature 0°C~40°C



## SPECIFICATION

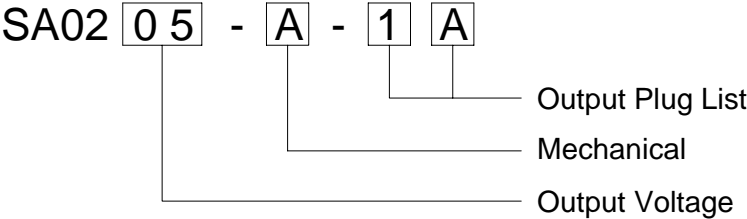
Item \ Model	SA023V3	SA0205~07	SA0208~10	SA0211~13
Output Voltage	+3.3V	+5V~7V	+8V~10V	+11V~13V
Output Rating	2.0A	10W Max	10W Max	15W Max
Input Voltage	AC 90~264V			
Input Frequency	47~63Hz			
Input Current	0.5A Maximum			
Inrush Current	40A Maximum			
Line Regulation	2% Maximum			
Load Regulation	± 5%			
Ripple & Noise	1% Typical			
Efficiency	68%~79% Typical			
Temperature Coefficient	0.05%/°C			
Over-Voltage Protection	7V~26V Maximum			
Operating Temperature	0~40°C			
Storage Temperature	-20~85°C			
Safety Description	Fig. A	UL, CUL, CB, LPS, BSMI, PSE		
	Fig. B	---		
	Fig. C	---		
	Fig. D	TUV, CB, LPS, BSMI		

(\*): Under Development (I/P): In Process

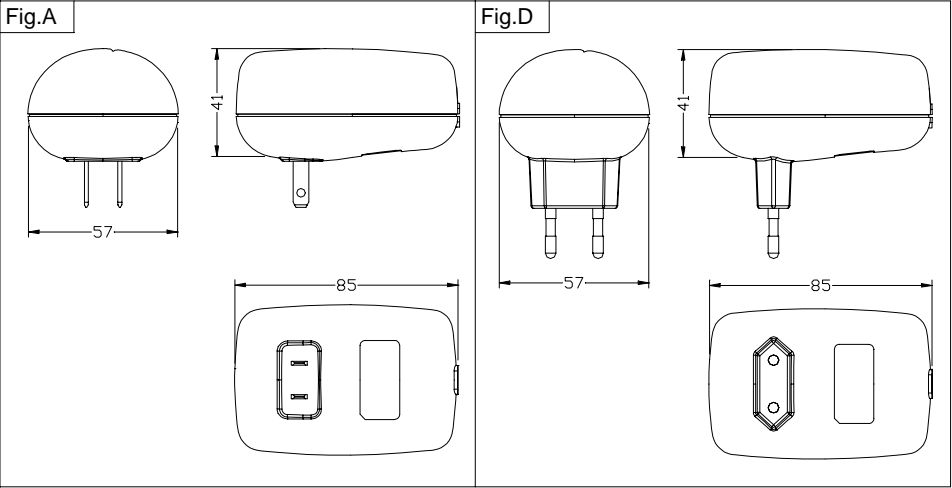
**Bothhand USA.** e-mail: [sales@bothhandusa.com](mailto:sales@bothhandusa.com) <http://www.bothhand.com>

462 Boston St - Topsfield, MA 01983 - Phone: 978-887-8050 - Fax: 978-887-5434

ORDERING INFORMATION



MECHANICAL



Unit: m.m.

Standard Output Cable:  
3.3V~5V: 18AWG, UL SPT-1, 1800mm.  
6V~12V: 20AWG, UL 2468, 1800mm.



**Bothhand USA.** e-mail: [sales@bothhandusa.com](mailto:sales@bothhandusa.com) <http://www.bothhand.com>

462 Boston St - Topsfield, MA 01983 - Phone: 978-887-8050 - Fax: 978-887-5434