

- Industrial temperature range (-40°C to +85°C)
- SMD package
- 1,000 VDC isolation
- UL 94V-0 package material
- MTBF > 1 million hours
- 5, 9, 12 or 15V out
- Efficiency up to 78%

The AMI series from Wall Industries, Inc. is highly suitable for high speed pick and place machine operation. The operating temperature range of -40°C to +85°C is ideal for designers needing industrial temperature operation.

**MODELS**

| MODEL NUMBER | INPUT VOLTAGE (VDC) | OUTPUT VOLTAGE (VDC) | OUTPUT CURRENT (mA) | EFFICIENCY |
|--------------|---------------------|----------------------|---------------------|------------|
| AM505-200NI  | 5                   | 5                    | 200                 | 68%        |
| AM509-111NI  | 5                   | 9                    | 111                 | 75%        |
| AM512-83NI   | 5                   | 12                   | 83                  | 77%        |
| AM515-66NI   | 5                   | 15                   | 66                  | 78%        |
| AM1205-200NI | 12                  | 5                    | 200                 | 67%        |
| AM1209-111NI | 12                  | 9                    | 111                 | 73%        |
| AM1212-83NI  | 12                  | 12                   | 83                  | 74%        |
| AM1215-66NI  | 12                  | 15                   | 66                  | 75%        |

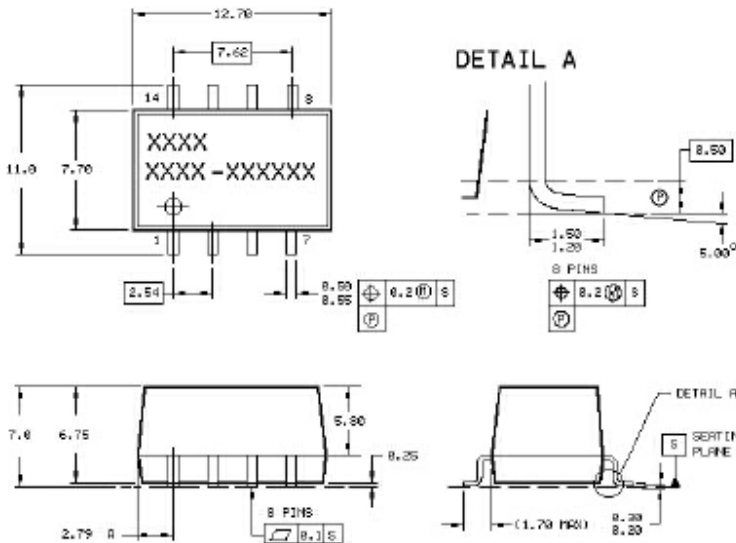
**SPECIFICATIONS**

All specifications apply at 25°C unless otherwise noted.

| SPECIFICATION           | VALUE  |
|-------------------------|--|
| <b>INPUT</b>            | Input Voltage Range $\pm 10\%$                 |
| <b>OUTPUT</b>           | Output Current see model information table     |
|                         | Voltage Accuracy $\pm 5\%$                     |
|                         | Line Regulation 1.2% / 1% of Vin max.          |
|                         | Load Regulation (10-100% load)                 |
|                         | 5Vout 15% max.                                 |
|                         | 9Vout 9% max.                                  |
|                         | 12Vout 7.5% max.                               |
| Ripple/Noise (20MHz BW) | 5Vout 85mV p-p                                 |
|                         | 9Vout 75mV p-p                                 |
|                         | 12Vout 65mV p-p                                |
|                         | 15Vout 7% max.                                 |
|                         | 15Vout 76mV p-p                                |
| <b>GENERAL</b>          | Efficiency see table                           |
|                         | Isolation Voltage (input to output) 1000VDC    |
|                         | Switching Frequency 110kHz typ.                |
| <b>ENVIRONMENTAL</b>    | Operating Temperature (ambient) -40°C to +85°C |
|                         | Storage Temperature -40°C to +100°C            |
|                         | Cooling free air convection                    |
| <b>PHYSICAL</b>         | Dimensions see drawing                         |
|                         | Weight > 1.5g                                  |
|                         | Case Material plastic UL 94V-0                 |

due to advances in technology, specifications subject to change without notice

**MARKINGS AND DIMENSIONS**



**PIN CONNECTION**

| PIN | SINGLE OUTPUT |
|-----|---------------|
| 1   | -INPUT        |
| 3   | +INPUT        |
| 7   | -OUTPUT       |
| 8   | +OUTPUT       |
| 14  | NC            |

Dimensions: mm

Unless otherwise specified, all tolerances are  $\pm 0.13$

6/30/2005