

**SUPER FLUX LED LAMP, 4PIN LED**
**BL-FL7600xx**
**■ Features:**

- 7.62\*7.62\*2.5MM, flat top, SUPER FLUX LED LAMP
- Ultra brightness.
- Wide Viewing Angles.
- Ideal For Backlight and Indicator
- RoHs Compliance


**■ Electrical-optical characteristics: (Ta=25°C) (Test Condition: IF=70mA)**

| Part Number  | Chip               |          |                     | Lens Type | Forward Voltage(VF)<br>Unit:V |           | Luminous Intensity (Iv)<br>Unit:mcd |      | Viewing Angle 2θ1/2 (deg) |
|--------------|--------------------|----------|---------------------|-----------|-------------------------------|-----------|-------------------------------------|------|---------------------------|
|              | Emitted Color      | Material | λ <sub>p</sub> (nm) |           | Typ                           | Max       | Min.                                | Typ. |                           |
|              |                    |          |                     |           | BL-FL7600URC                  | Ultra Red | AlGaAs,DDH                          | 660  |                           |
| BL-FL7600UEC | Ultra Orange       | AlGaInP  | 630                 | 2.10      | 2.50                          | 800       | 1500                                |      |                           |
| BL-FL7600UYC | Ultra Yellow       | AlGaInP  | 590                 | 2.10      | 2.50                          | 600       | 1300                                |      |                           |
| BL-FL7600UGC | Ultra Green        | AlGaInP  | 574                 | 2.20      | 2.50                          | 200       | 700                                 |      |                           |
| BL-FL7600PGC | Ultra Pure Green   | InGaN    | 525                 | 3.80      | 4.50                          | 1000      | 5000                                |      |                           |
| BL-FL7600BGC | Ultra Bluish Green | InGaN    | 505                 | 3.80      | 4.50                          | 800       | 4000                                |      |                           |
| BL-FL7600UBC | Ultra Blue         | InGaN    | 470                 | 2.70      | 4.20                          | 800       | 2000                                |      |                           |
| BL-FL7600UWC | Ultra White        | InGaN    | /                   | 2.70      | 4.20                          | 1000      | 5000                                |      |                           |

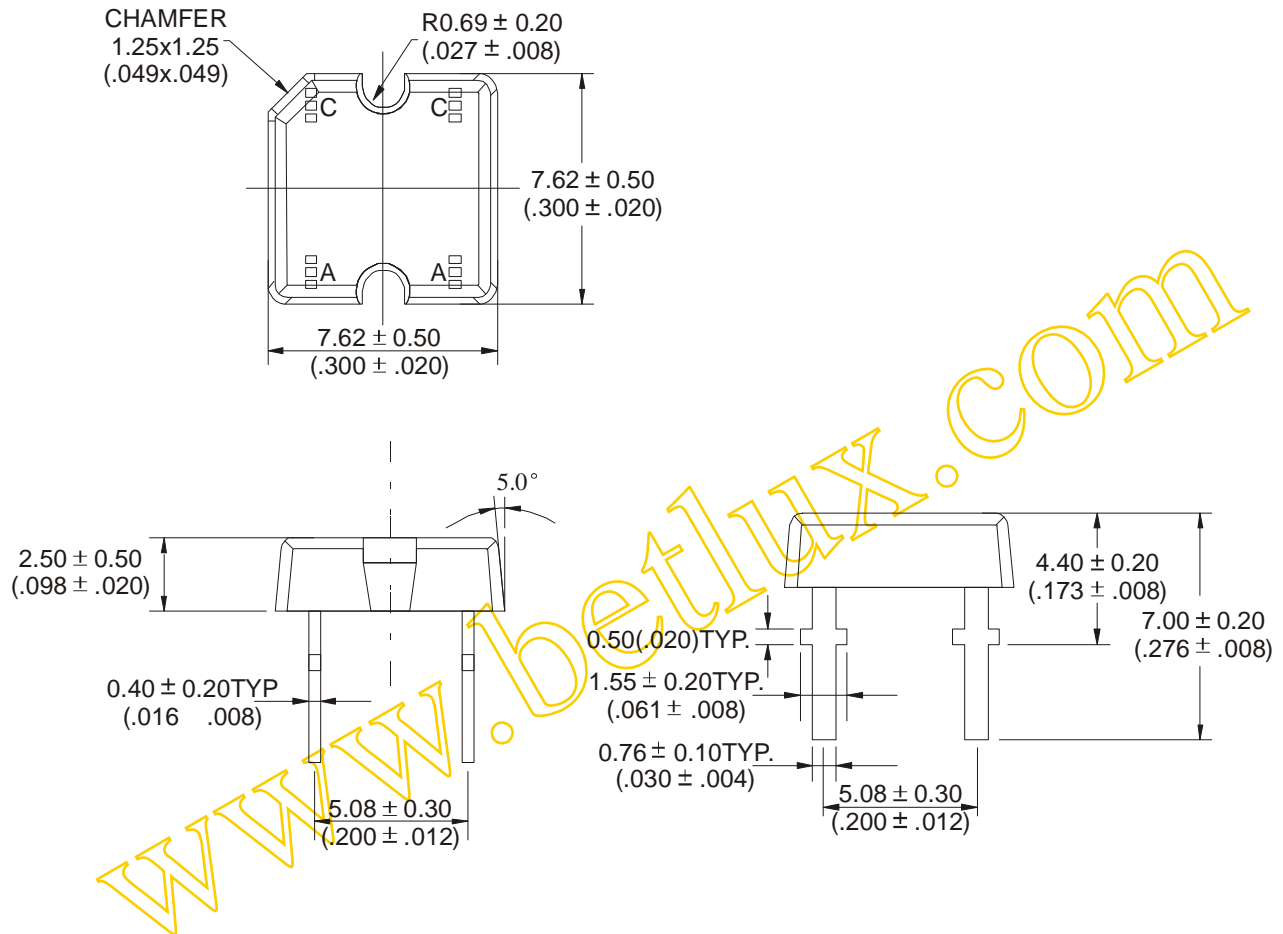
**■ Absolute maximum ratings (Ta=25°C)**

| Parameter   | UR  | UE  | UY  | UG  | PG  | BG  | UB  | W   | Unit |
|---|---|-----|-----|-----|-----|-----|-----|-----|------|
| Forward Current I <sub>F</sub>                            | 25  | 30  | 30  | 30  | 30  | 30  | 30  | 30  | mA   |
| Power Dissipation P <sub>d</sub>                          | 60  | 65  | 65  | 75  | 110 | 110 | 120 | 120 | mW   |
| Reverse Voltage V <sub>R</sub>                            | 5   | 5   | 5   | 5   | 5   | 5   | 5   | 5   | V    |
| Peak Forward Current I <sub>PF</sub><br>(Duty 1/10 @1KHZ) | 150   | 150 | 150 | 150 | 150 | 100 | 100 | 100 | mA   |
| Operation Temperature T <sub>OPR</sub>                    | -40 to +80  |     |     |     |     |     |     |     | °C   |
| Storage Temperature T <sub>STG</sub>                      | -40 to +85  |     |     |     |     |     |     |     | °C   |
| Lead Soldering Temperature<br>T <sub>SOL</sub>            | Max.260±5°C for 3 sec Max.<br>(1.6mm from the base of the epoxy bulb) |     |     |     |     |     |     |     | °C   |

**SUPER FLUX LED LAMP, 4PIN LED**

**BL-FL7600xx**

■ **Package configuration & Internal circuit diagram**



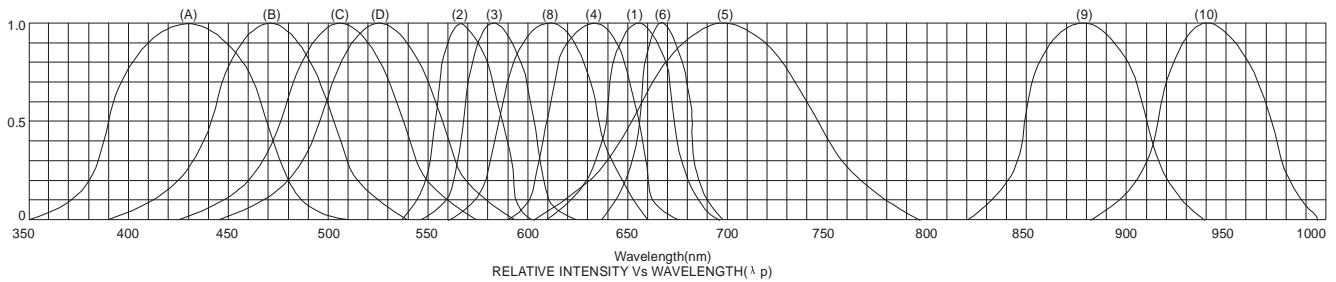
**Notes:**

1. All dimensions are in millimeters (inches)
2. Tolerance is ±0.25(0.01")unless otherwise noted.
3. Specifications are subject to change without notice.

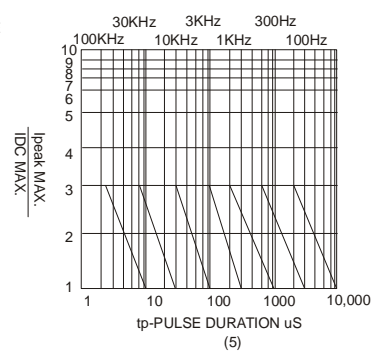
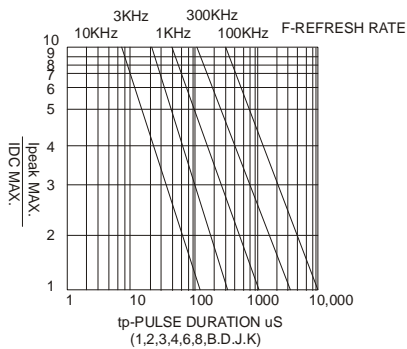
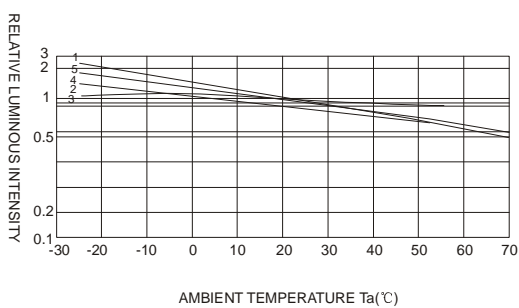
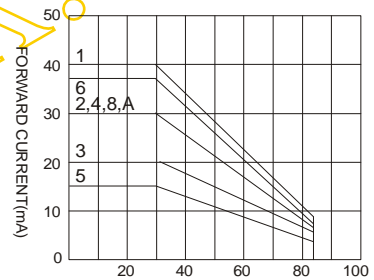
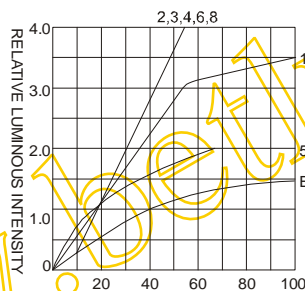
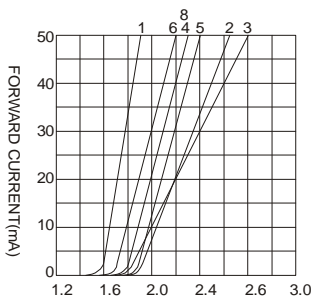
## SUPER FLUX LED LAMP, 4PIN LED

BL-FL7600xx

### Typical electrical-optical characteristics curves:



- |   |                                      |
|---|--------------------------------------|
| (1) - GaAsP/GaAs 655nm/Red                | (9) - GaAlAs 880nm                   |
| (2) - GaP 570nm/Yellow Green              | (10) - GaAs/GaAs & GaAlAs/GaAs 940nm |
| (3) - GaAsP/GaP 585nm/Yellow              | (A) - GaN/SiC 430nm/Blue             |
| (4) - GaAsP/GaP 635nm/Orange & Hi-Eff Red | (B) - InGaN/SiC 470nm/Blue           |
| (5) - GaP 700nm/Bright Red                | (C) - InGaN/SiC 505nm/Ultra Green    |
| (6) - GaAlAs/GaAs 660nm/Super Red         | (D) - InGaN/SiC 525nm/Ultra Green    |
| (8) - GaAsP/GaP 610nm/Super Red           |                                      |



NOTE:25°C free air temperature unless otherwise specified