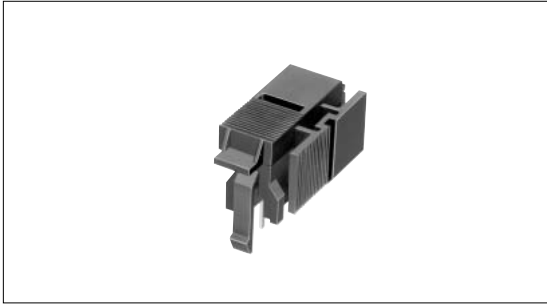


Power Switch 5A 250V AC Qualified Primary Input Voltage Selection Type SDKH Series



For exclusive use in primary input voltage selection with a 2-piece structure contributing to reducing the size.



Detector

Push

Slide

Rotary

Encoders

Power

Dual-in-line
Package Type

TACT Switch™

Custom-
Products

Product Line

Circuit arrangement	Rating	Travel (mm)	Operating force	Mounting method	Terminal configuration	Minimum order unit(pcs.)	Product No.	Drawing No.
SPDT	5A 250V AC	6	2 to 15N	Snap-in	For PC board	2,000	SDKHA20100	1

Dimensions

Unit:mm

Style	PC board mounting hole dimensions
<p>For PC board(SPDT)</p> <p>Style dimensions: 16.3, 16.3, 6.6, 8.6, 1.1, 6 travel, 19.5, 1.5, 0.5, 8.4, 13.9, 0.5, 1.7, 1, 7, 25.7, 0.6, 3.7, 8, 9, 10.8, 3.</p> <p>PC board mounting hole dimensions: 3.4, 2.2, 7, 7, 25.5, 3-ø1.5 holes.</p>	

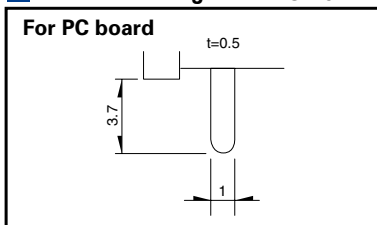
Push
Type

Rocker
Type

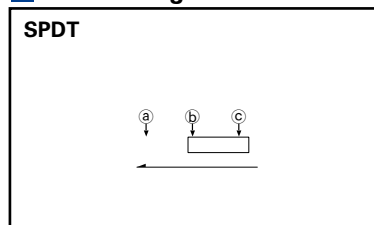
**Slide
Type**

Rotary
Type

Terminal Configuration Unit:mm








Circuit Diagram



Notes

1. Safety standard approval must be obtained as a set.
2. Please place purchase orders per minimum order unit(integer).

List of Varieties

Items	Type	Slide				Rotary	
	Series	SDKG	SDKH	SDKP	SDKT	SDKZ	
Detector	Photo						
Push							
Slide	Travel (mm)	6			2.2	Full rotation	
Rotary	Remark					With signal circuit	
Encoders	Operating temperature range	-10 to +60				-10 to +70	
Power	Rating	5A 250V AC			6A 125V AC	PS:16(6)A 250V AC, 14(6)A 250V AC DC:0.1A 12V DC	
Dual-in-line Package Type	Electrical performance	Contact resistance	50m max.		100m max.	10m max.	
TACT Switch™			100m max.		10m max.	100m max.	
Custom-Products		Insulation resistance	500M min. 500V DC	100M min. 500V DC	500M min. 500V DC	1,000M min. 500V DC	500M min. 500V DC 100M min. 100V DC
	Voltage proof		2,000V AC for 1minute			1,000V AC for 1minute	2,000V AC for 1minute 100V AC for 1minute
	Mechanical performance	Terminal strength	10N for 1minute				20N 5N
Push Type		Actuator strength	Operating direction		50N	30N	—
Rocker Type			Perpendicular direction		—	10N	30N
Slide Type		Resistance to soldering heat	Manual soldering		350 ± 10 , 3 ± 0.5s		350 ± 10 , 3 ± 0.5s
Rotary Type	Dip soldering		260 ± 5 , 10 ± 1s				
	Durability	Operating life	100cycles		20,000cycles	10,000cycles 30,000cycles	
			Without load		Load : As ratings		
	Environmental performance	Cold	-20 ± 2 for 96h			-40 ± 2 for 240h	
		Dry heat	85 ± 2 for 96h			85 ± 2 for 240h	
		Damp heat	40 ± 2 , 90 to 95%RH for 96h			40 ± 2 , 90 to 95%RH for 240h	
	Page	227	229	230	231	232	