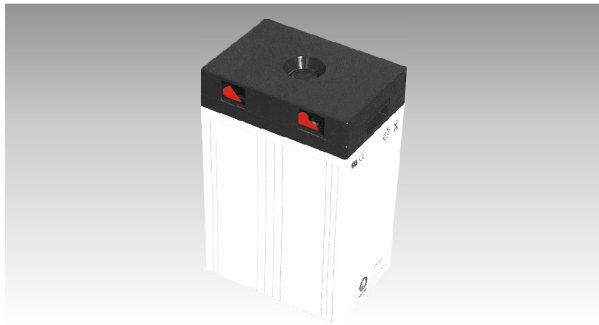
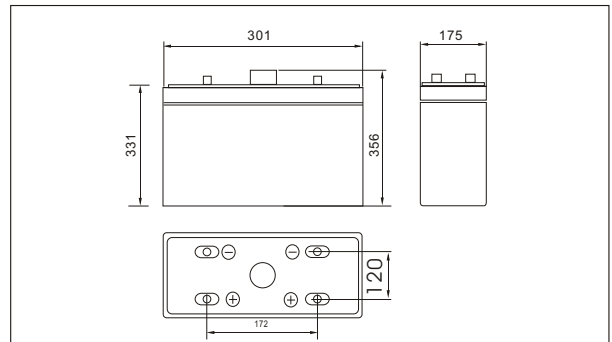




SW26000(2V600AH)



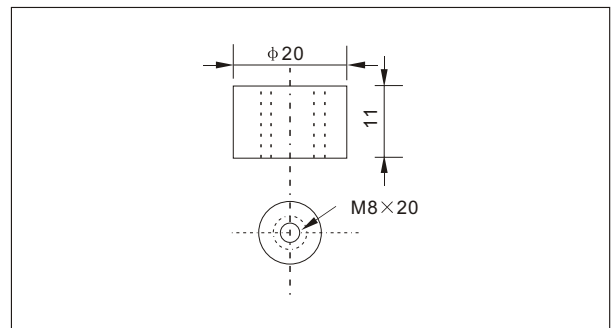
Outer dimensions (mm)



Specifications

Nominal Voltage		2 V
Rated capacity (10 hour rate)		600 Ah
Dimensions	Total Height	356 mm (14.0 inches)
	Height	331 mm (13.0 inches)
	Length	301 mm (11.9 inches)
	Width	175 mm (6.89 inches)
Weight Approx		38.5 Kg (85.08 lbs)

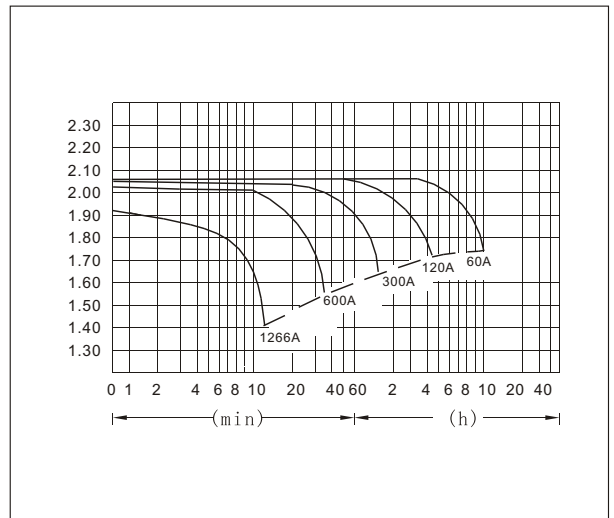
Terminal Type (mm)



Characteristics

Capacity 25°C(77°F)	10 hour rate(60 A)	600 AH
	5 hour rate(96 A)	480 AH
	1 hour rate(360 A)	360 AH
Internal Resistance	Full charged Battery at 25°C(77°F)	Approx 0.35 mΩ
Capacity affected by Temperature (10hour rate)	40°C(104°F)	102%
	25°C(77°F)	100%
	0°C(32°F)	85%
	-15°C(5°F)	65%
Self-Discharge at 25°C(77°F)	Capacity after 3 month storage	91%
	Capacity after 6 month storage	82%
	Capacity after 12 month storage	64%
Terminal		T20
Charge (constant Voltage)	Cycle	Initial Charging Current less than 240 A Voltage 2.35-2.40V
	Float	Voltage 2.25-2.30V

Discharge Curves 25°C(77°F)



Constant Current(Amp) and Constant Power(Watt) Discharge Table at 25°C(77°F)

Time	5min	10min	15min	30min	1h	2h	3h	4h	5h	8h	10h	20h	
1.60V	A	1922	1266	1021	684	360	210.0	154.2	120.0	99.0	70.2	63.0	34
	W	3305	2253	1824	1226	648	384	286.0	225.0	187.6	134.1	121.3	66
1.70V	A	1861	1142	961	654	338	200.4	150.0	117.0	97.2	68.4	61.8	33.0
	W	3313	2126	1793	1224	638	385	289.5	226.7	188.9	133.4	121.0	64.5
1.75V	A	1801	1022	841	612	328	195.6	146.4	115.2	96.0	67.8	60.6	33.0
	W	3277	1937	1599	1174	632	378	284.3	224.6	187.6	132.9	119.5	65.0
1.80V	A	1735	963	781	564	317	190.8	142.8	113.4	93.6	66.0	60.0	32.4
	W	3245	1851	1500	1089	615	372	280.6	223.2	184.4	130.4	118.9	64.3
1.85V	A	1677	902	721	504	306	186.0	138.0	110.4	91.2	64.2	57.0	30.6
	W	3170	1742	1399	983	600	366	273.2	219.1	181.4	128.1	114.7	61.8