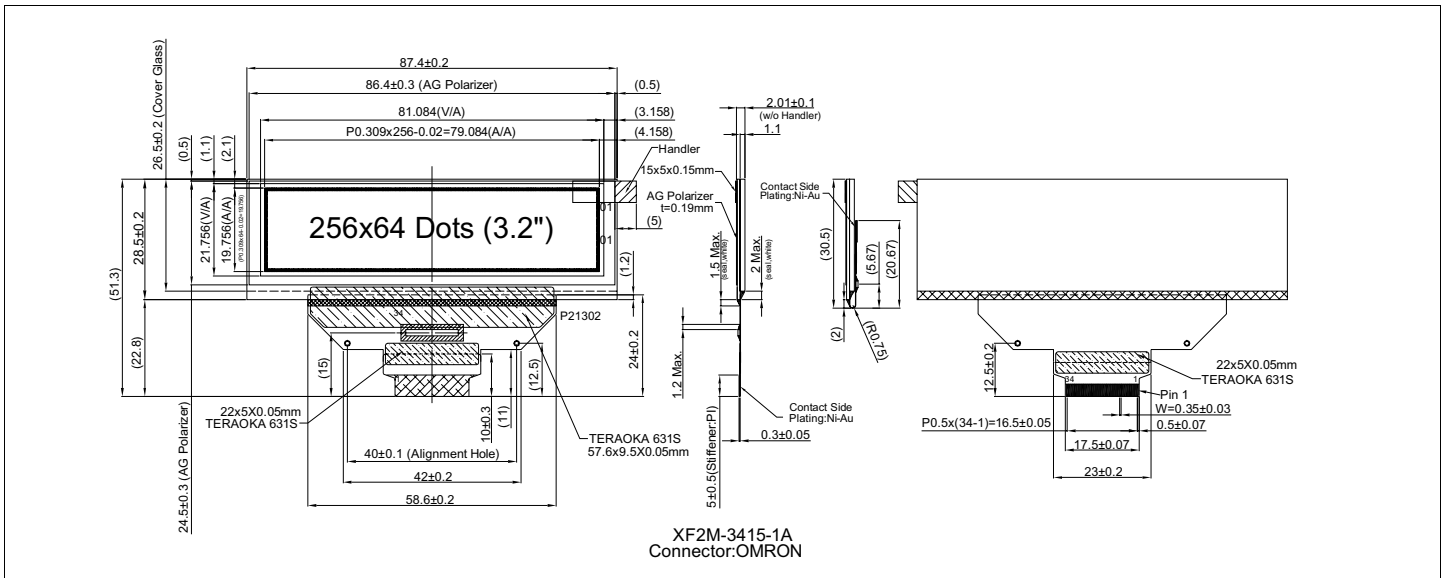


### Dimensional Drawing



### Features

- Viewing Angle.....Wide (160 degrees)
- High Contrast.....2000:1
- Fast Response Time.....10 usec
- Built-in DC-DC Converter
- Built-in Controller.....SSD1322

### Physical Data

- Module Size.....87.4W x51.3H x 2.01T mm
- Viewing Area Size.....81.084W x 21.756H mm
- Dot Pitch.....0.309W x 0.309H mm
- Dot Size.....0.289W x 0.289H mm
- Weight.....11.03g

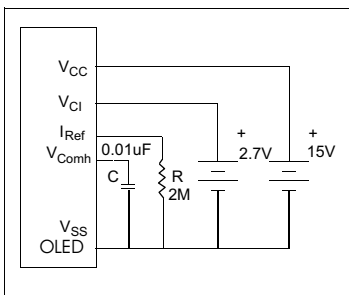
### Electrical Characteristics (VCC=15 V 25°C)

PARAMETER	SYM	CONDITION	MIN	TYP	MAX	UNIT
OPERATING VOLTAGE	V <sub>CI</sub>	-	2.4	2.8	3.5	V
OPERATING VOLTAGE	V <sub>CC</sub>	-	14	14.5	15	V
INPUT HIGH VOLTAGE	V <sub>IH</sub>	-	0.8*V <sub>CI</sub>	-	V <sub>CI</sub>	V
INPUT LOW VOLTAGE	V <sub>IL</sub>	-	0	-	0.2V <sub>CC</sub>	V
OPERATING CURRENT	I <sub>CC</sub>	All pixels on	-	42	44	mA
OPERATING CURRENT	I <sub>CI</sub>	All pixels on	-	220	-	uA
POWER CONSUMPTION	P <sub>D</sub>	All pixels on	-	609	638	mW
BRIGHTNESS	L	Average	80	90	-	cd/m <sup>2</sup>
DRIVE METHOD			1/64 Duty			

### Pin Connections

PIN NO.	SYMBOL		FUNCTION
1	N/C	-	No Connection
2	VSS	I	Ground Pin
3	N/C	-	No Connection
4	VCC	I	Power Supply for OLED driver
5	VCOMH	I	COM Deselected Voltage Level
6	VLSS	I	Analog Ground Pin
7	MS	I	Select Chip- connect to VDDIO
8	D7	H/L	Bi-directional data bus
9	D6	H/L	Bi-directional data bus
10	D5	H/L	Bi-directional data bus
11	D4	H/L	Bi-directional data bus
12	D3	H/L	Bi-directional data bus
13	D2	H/L	Bi-directional data bus
14	D1	H/L	Bi-directional data bus
15	D0	H/L	Bi-directional data bus
16	E/RD#	L	Read data input
17	R/WR#	L	Write data input
18	Bs0	H/L	MCU interface selection input
19	Bs1	H/L	MCU interface selection input
20	D/C#	H/L	Data-command control input
21	CS#	L	Chip select input
22	RES#	L	Hardware reset input
23	DOF#	-	No Connect
24	CL	H/L	External Clock Input
25	FR	-	No Connect
26	IREF	I	Reference input (connect recom. Res. R)
27	VDDIO	I	Power Supply for interface logic
28	VDD	I	Power Supply for internal logic
29	VCC	I	Power Supply Input
30	VSL	I	Power Supply for OLED
31	VLSS	I	Segment Reference Voltage
32	N/C	-	No Connection
33	VCC	I	Power Supply for logic
34	N/C	-	No Connection

### Power Supply



### Absolute Maximum Ratings

PARAMETER	SYMBOL	MIN	MAX	UNIT
SUPPLY VOLTAGE	V <sub>CI</sub>	-0.3	4.0	V
SUPPLY VOLTAGE	V <sub>CC</sub>	10	21	V
INPUT VOLTAGE	V <sub>IN</sub>	-0.3	V <sub>DD</sub> + 0.3	V
OPERATING TEMPERATURE	T <sub>OP</sub>	-40	70	°C
STORAGE TEMPERATURE	T <sub>STG</sub>	-40	85	°C
LIFE TIME 80/100 cd/m			30/24K	HrsT