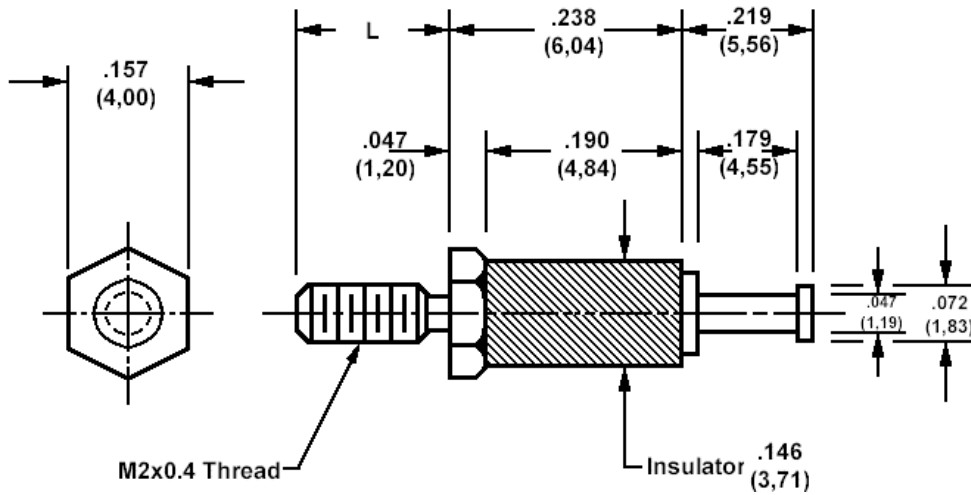


## 572-4903 Insulated solder terminal, Turreted



### How to order code

**572-4903-XX-YY-16**

Basic Part No (XX = thread length, YY = plating finish. See tables for options)

Basic Part No.	XX	L
572-4903	-01	.118 (3,00)
	-02	.196 (5,00)

Component	Material	Finish <sub>1</sub> (YY)	
		-01	-05
Terminal	Brass	Silver	Electro Solder
Stud	Brass	Cadmium (plus chromate)	Cadmium (plus chromate)
Insulator	Diallyl Phthalate (blue)		

Additional Specifications	
Dielectric Withstanding Voltage (VRMS)	3000