

JEGC0158

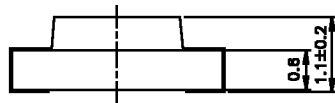
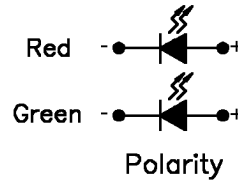
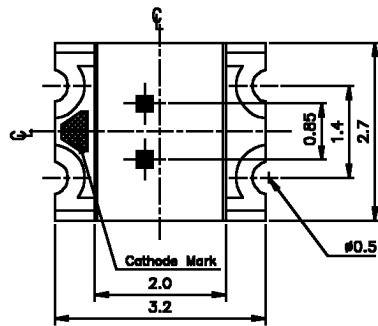
Page 1 of 2



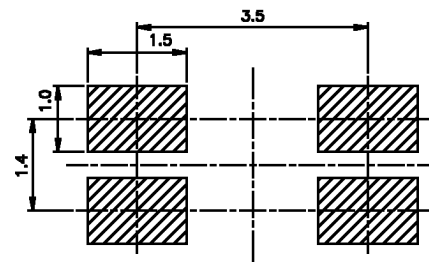
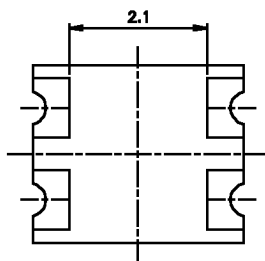
These lamps are miniature chip type designed for surface mounting. They are of the so-called 1206 size, measuring approximately 2.7 x 3.2 mm.



RoHS Compliant
Aug 2004



For Reflow Soldering



PART NO.	Chip		Lens Color
	Material	Emitted Color	
JEGC0158	AlGaInP	Red	Water Clear
	AlGaInP	Super Yellow Green	

* Specifications subject to change without notice. Dimensions are in mm±0.1 unless stated otherwise.

Absolute Maximum Ratings at $T_a = 25\text{ }^\circ\text{C}$

Parameter	Symbol	Rating	Units
Forward Current	I_F	USR 25	mA
		SYG 25	
Operating Temperature	T_{opr}	-40 to +85	$^\circ\text{C}$
Storage Temperature	T_{stg}	-40 to +90	$^\circ\text{C}$
Soldering Temperature	T_{sol}	260 (for 5 seconds)	$^\circ\text{C}$
Electrostatic Discharge	ESD	2000	V
Power Dissipation	P_d	USR 60	mW
		SYG 60	
Peak Forward Current (Duty 1/10 @ 1KHz)	I_F (Peak)	USR 160	mA
		SYG 160	
Reverse Voltage	V_R	5	V

Electronic Optical Characteristics

Parameter	Symbol	Min.	Typ.	Max.	Units	Condition
Luminous Intensity	I_V	USR 18	—	45	mcd	$I_F = 20\text{ mA}$
		SYG 18	—	45		
Viewing Angle	$2\theta_{1/2}$	—	140	—	deg	$I_F = 20\text{ mA}$
Peak Wavelength	λ_p	USR —	639	—	nm	$I_F = 20\text{ mA}$
		SYG —	575	—		
Dominant Wavelength	λ_d	USR —	631	—	nm	$I_F = 20\text{ mA}$
		SYG 570.0	—	574.5		
Spectrum Radiation Bandwidth	$\Delta\lambda$	USR —	20	—	nm	$I_F = 20\text{ mA}$
		SYG —	20	—		
Forward Voltage	V_F	USR —	2.0	2.4	V	$I_F = 20\text{ mA}$
		SYG —	2.0	2.4		
Reverse Current	I_R	—	—	10	μA	$V_R = 5\text{ V}$

* Specifications subject to change without notice. Dimensions are in mm±0.1 unless stated otherwise.