

- Single Turn/ Cermet/ Industrial /sealed
- 8 terminal styles
- RoHS Compliant



## 3386 Square Trimming Potentiometer

### Electrical Characteristics

Standard Resistance Range.....50 Ω ~2M Ω  
Resistance Tolerance.....±10%  
Absolute Minimum Resistance...≤1%R or 10 Ω  
Contact Resistance Variation .....CRV≤3%  
Insulation Resistance.....R1 ≥1G Ω (100Vac)  
Withstand Voltage.....600Vac  
Effective Travel.....300°

### Environmental Characteristics

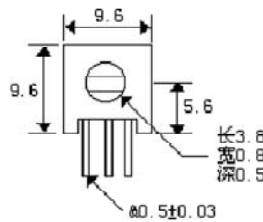
(Power Rating) (315 volts max) .....  
.....0.5W@70°C, 0W@125°C  
Temperature Range..... - 55°C~125°C  
Temperature Coefficient..... ±250ppm/°C  
Temperature Variation... - 55°C, 30min, +125°C  
.....30min、3cycles  
.....ΔR≤5%R, Δ(Uab/Uac)≤10%  
Collision ...100m/s<sup>2</sup>, 1000cycles, ΔR≤2%R  
..... Δ(Uab/Uac)≤10%  
Electrical Endurance at 70°C... 0.5W@70°C, 1000h  
... ΔR≤10%R, Δ(Uab/Uac)≤10%, CRV≤3% or 5Ω  
Rotational Life..... 200cycles  
..... ΔR≤10%R, CRV≤3% or 5Ω

### Physical Characteristics

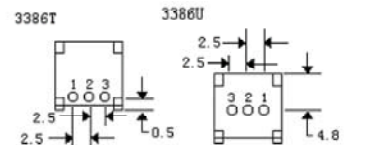
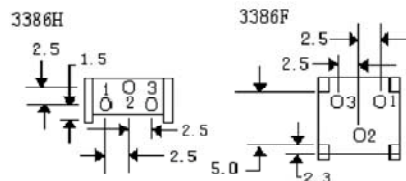
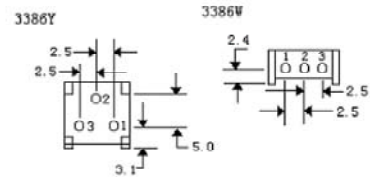
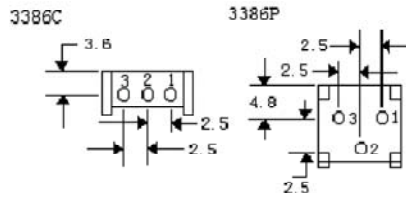
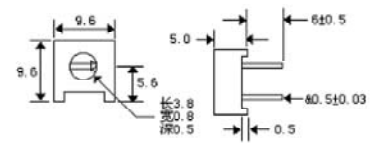
Starting Torque.....≤35mN·m  
Marking.....Resistance Tolerance  
... (when no identification, it is of ±10%)  
.....Resistance Code、 Model  
Standard Packaging...50pcs, per tube

### RoHS Compliant

### Common Dimensions



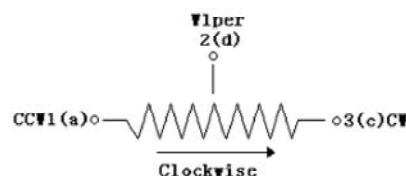
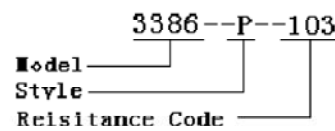
### Common Dimensions



### Standard Resistance Table

Resistance (Ohms)	Resistance Code
10	100
20	200
50	500
100	101
200	201
500	501
1,000	102
2,000	202
5,000	502
10,000	103
20,000	203
25,000	253
50,000	503
100,000	104
200,000	204
250,000	254
500,000	504
1,000,000	105
2,000,000	205

### How To Order



Tolerance is ±0.25  
If no identification