

**PLEASE CHECK WWW.MOLEX.COM FOR LATEST PART INFORMATION**

**Part Number:** **0679138003**  
**Status:** **Active**  
**Description:** 2.50mm (.098") Pitch, SDIO Memory Card Connector, Reverse Mount, Push Push Type, with Card Lock Pin and Mylar, Lead free

**Documents:**

[Drawing \(PDF\)](#) [RoHS Certificate of Compliance \(PDF\)](#)  
[Product Specification PS-67913-003 \(PDF\)](#)

**General**

Product Family	Memory Card Sockets
Series	67913
Button Type	Push-Push
Comments	SD acceptable only. With Card Lock Pin and Mylar. Lead free
Component Type	Header & Ejector (Host)
Product Name	SDIO
Type	N/A

**Physical**

Card Detection Switch	Yes
Circuits (Loaded)	9
Circuits (maximum)	9
Color - Resin	Black
Durability (mating cycles max)	10,000
Ejector Button Side	No Ejector Button Present
Entry Angle	90° Angle (Side Entry)
Keying to Mating Part	Yes
Material - Metal	Copper Alloy
Material - Plating Mating	Gold
Material - Resin	High Temperature Thermoplastic
PCB Locator	Yes
PCB Mounting Side	Reverse
PCB Retention	Yes
Packaging Type	Embossed Tape on Reel
Pitch - Mating Interface (in)	0.067 In, 0.098 In
Pitch - Mating Interface (mm)	1.70 mm, 2.50 mm
Pitch - Term. Interface (in)	0.067 In, 0.098 In
Pitch - Term. Interface (mm)	1.70 mm, 2.50 mm
Ports	1
Termination Interface: Style	Surface Mount

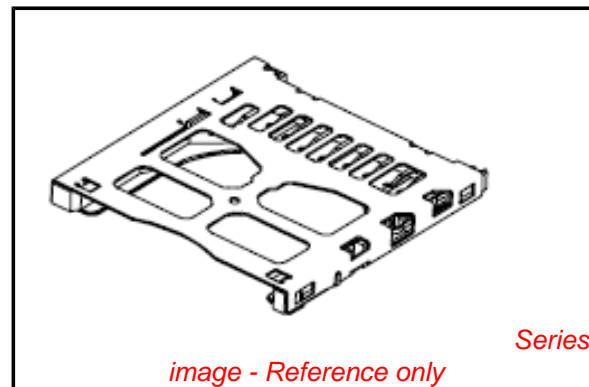
**Electrical**

Current - Maximum per Contact	0.5A
Shielded	Yes
Voltage - Maximum	250V DC

**Material Info**

**Reference - Drawing Numbers**

Packaging Specification	PK-67913-001
Product Specification	PS-67913-003
Sales Drawing	SD-67913-003



**EU RoHS**

**ELV and RoHS  
Compliant**  
**REACH SVHC  
Not Reviewed**  
**Halogen-Free  
Status  
Not Reviewed**

**China RoHS**



**Need more information on product  
environmental compliance?**

Email [productcompliance@molex.com](mailto:productcompliance@molex.com)  
For a multiple part number RoHS Certificate of Compliance, [click here](#)

Please visit the [Contact Us](#) section for any non-product compliance questions.

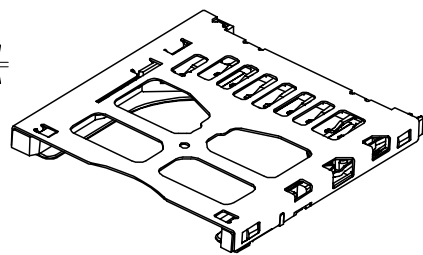
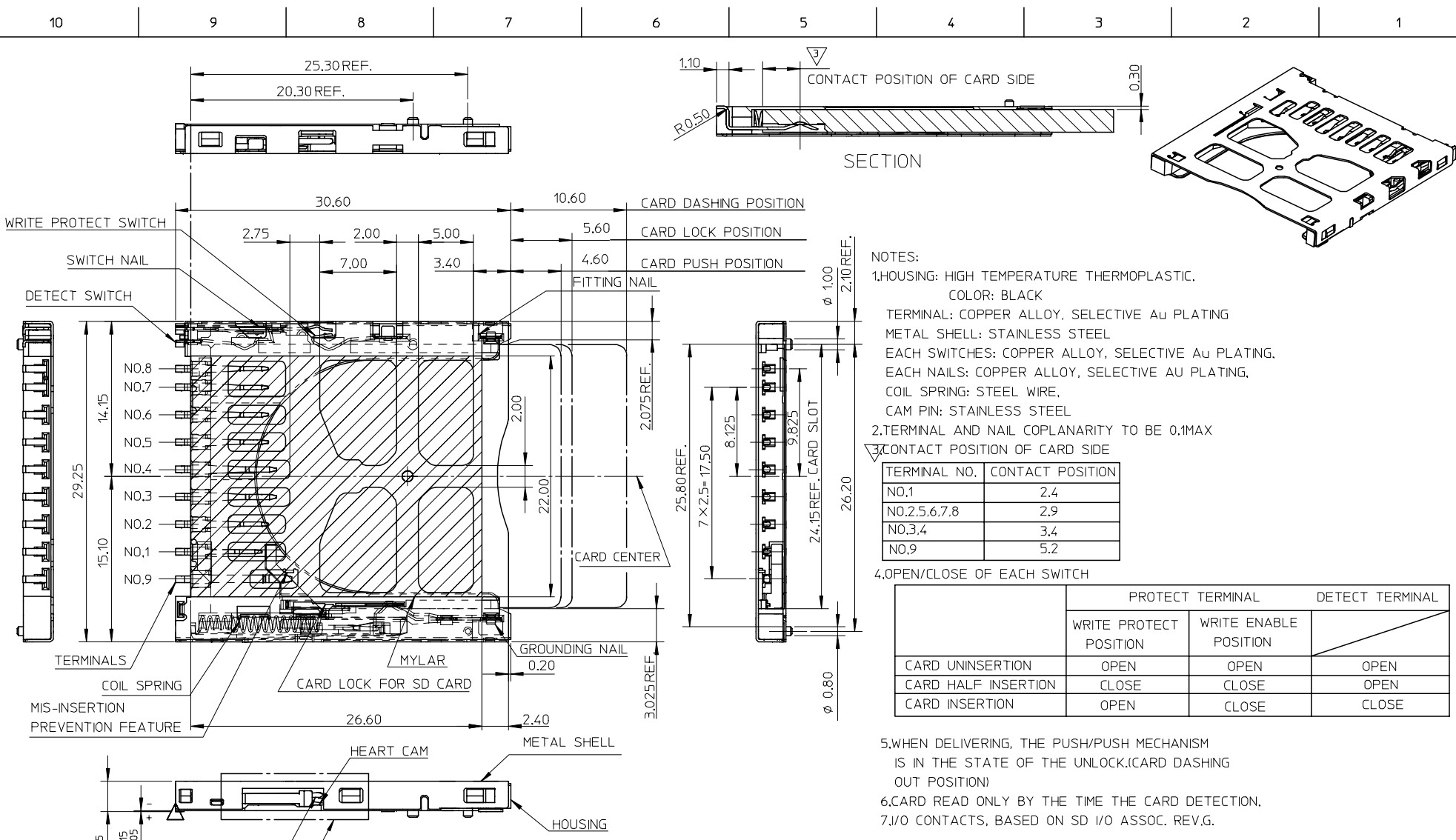
**Search Parts in this Series**

67913Series

**Use With**

SDIO

**PLEASE CHECK [WWW.MOLEX.COM](http://WWW.MOLEX.COM) FOR LATEST PART INFORMATION**



- NOTES:
- HOUSING: HIGH TEMPERATURE THERMOPLASTIC.  
COLOR: BLACK
  - TERMINAL: COPPER ALLOY, SELECTIVE Au PLATING
  - METAL SHELL: STAINLESS STEEL
  - EACH SWITCHES: COPPER ALLOY, SELECTIVE Au PLATING.
  - EACH NAILS: COPPER ALLOY, SELECTIVE AU PLATING.
  - COIL SPRING: STEEL WIRE.
  - CAM PIN: STAINLESS STEEL
- 2.TERMINAL AND NAIL COPLANARITY TO BE 0.1MAX
3. CONTACT POSITION OF CARD SIDE

TERMINAL NO.	CONTACT POSITION
NO.1	2.4
NO.2,5,6,7,8	2.9
NO.3,4	3.4
NO.9	5.2

4.OPEN/CLOSE OF EACH SWITCH

	PROTECT TERMINAL		DETECT TERMINAL
	WRITE PROTECT POSITION	WRITE ENABLE POSITION	
CARD UNINSERTION	OPEN	OPEN	OPEN
CARD HALF INSERTION	CLOSE	CLOSE	OPEN
CARD INSERTION	OPEN	CLOSE	CLOSE

- WHEN DELIVERING, THE PUSH/PUSH MECHANISM IS IN THE STATE OF THE UNLOCK.(CARD DASHING OUT POSITION)
- CARD READ ONLY BY THE TIME THE CARD DETECTION.
- I/O CONTACTS, BASED ON SD I/O ASSOC. REV.G.

PART NO.	DESCRIPTION	PRODUCT SPECIFICATION	REMARK
67913-8003	LEAD-FREE WITH/MYLAR	PS-67913-003	FOR SD ONLY
67913-8006	LEAD-FREE W/O CARD LOCK PIN		SD/MMC

NEW RELEASE  
 EC NO: 2005/06/16  
 DRAWN: QI ZHANG  
 CHKD:  
 APPR:

QUALITY SYMBOLS  
 ▽=0  
 ▽=0

GENERAL TOLERANCES (UNLESS SPECIFIED)

	mm	INCH
4 PLACES	± ---	± ---
3 PLACES	± ---	± ---
2 PLACES	± 0.25	± ---
1 PLACE	± 0.25	± ---
ANGULAR ± 3 °		

DRAFT WHERE APPLICABLE MUST REMAIN WITHIN DIMENSIONS

DIMENSION STYLE: MM ONLY

SCALE: 3:1

DESIGN UNITS: METRIC

THIRD ANGLE PROJECTION

DRAWN BY: QI ZHANG DATE: 2005/05/26

CHECKED BY: DATE:

APPROVED BY: DATE:

MATERIAL NO.:

DOCUMENT NO. SD-67913-003

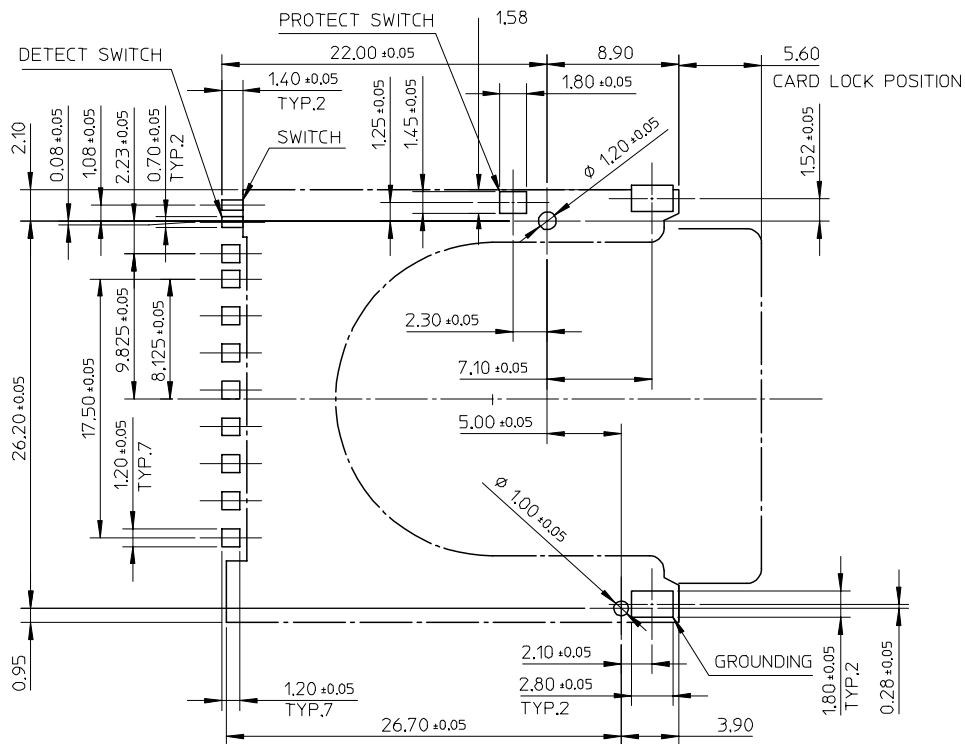
SHEET NO. 1 OF 3

SD/I/O CARD CONN. REVERSE TYPE WITH PUSH PUSH (LEAD-FREE)

MOLEX INCORPORATED

SEE TABLE

THIS DRAWING CONTAINS INFORMATION THAT IS PROPRIETARY TO MOLEX INCORPORATED AND SHOULD NOT BE USED WITHOUT WRITTEN PERMISSION

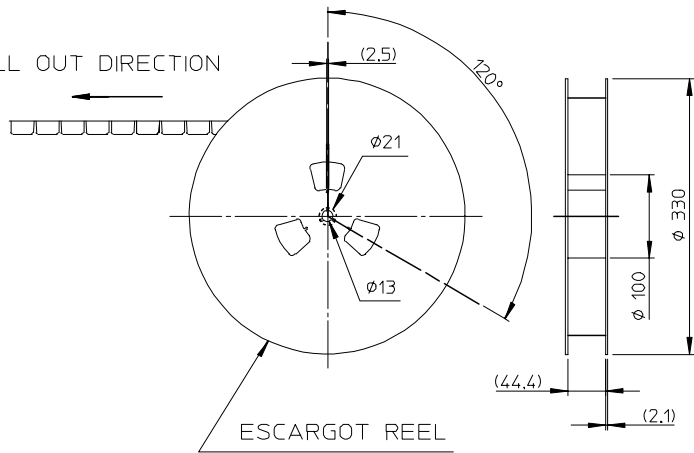


RECOMMENDED P.C.B LAYOUT DIMENSION

NEW RELEASE	EC NO:	2005/06/16	QUALITY SYMBOLS ▽=0 ▽C=0	GENERAL TOLERANCES (UNLESS SPECIFIED)		DIMENSION STYLE	SCALE	DESIGN UNITS	THIRD ANGLE PROJECTION				
	DRWN:	QLZHANG		mm	INCH	MM ONLY	3:1	METRIC					
	CHKD:			4 PLACES ± ---	± ---	DRAWN BY	DATE	TITLE					
	APPR:			3 PLACES ± ---	± ---	QLZHANG	2005/05/26	SD/IO CARD CONN. REVERSE TYPE WITH PUSH PUSH (LEAD-FREE)					
		2 PLACES ± 0.25	± ---	2 PLACES ± 0.25	± ---	CHECKED BY	DATE	APPROVED BY			DATE	MOLEX INCORPORATED	
		1 PLACE ± 0.25	± ---	1 PLACE ± 0.25	± ---	APPROVED BY		DATE	MATERIAL NO.		DOCUMENT NO.	SHEET NO.	
		ANGULAR ± 3 °		DRAFT WHERE APPLICABLE MUST REMAIN WITHIN DIMENSIONS		SEE SHEET 1		SD-67913-003		2 OF 3			
		THIS DRAWING CONTAINS INFORMATION THAT IS PROPRIETARY TO MOLEX INCORPORATED AND SHOULD NOT BE USED WITHOUT WRITTEN PERMISSION											

10 9 8 7 6 5 4 3 2 1

PULL OUT DIRECTION



ESCARGOT REEL

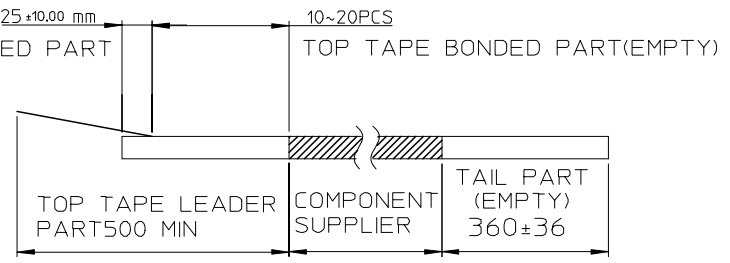
NOTES

1. NUMBER OF CONNECTORS: 300 PCS/REEL
- 2.

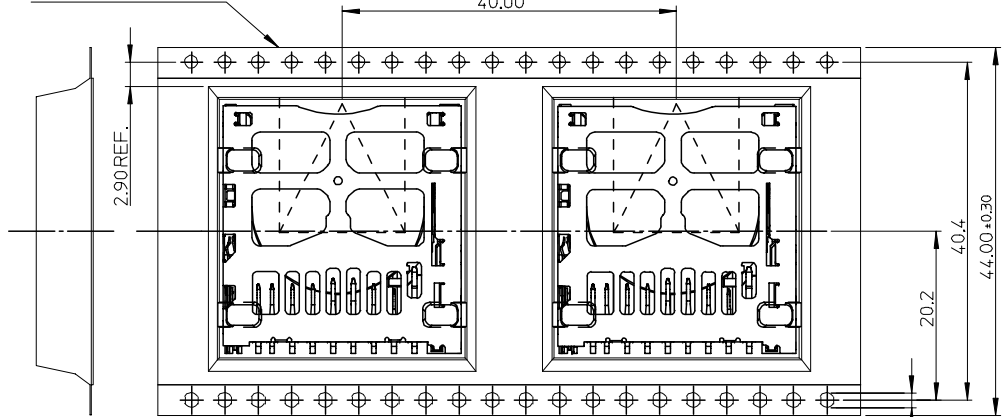
TOP TAPE NON-BONDED PART

TOP TAPE BONDED PART (EMPTY)

PULL OUT DIRECTION



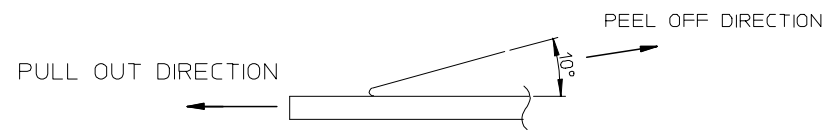
44 WIDTH TAPE



PULL OUT DIRECTION

DIRECTION OF CONNECTOR IN EMBOSSED TAPE

3. PEEL OFF FORCE OF TOP TAPE: 0.1~1.3 N (10.2~130gf)  
PEELING DIRECTION AS SHOWN IN FOLLOWING FIG.)  
(PEEL OFF SPEED: 300mm/min.REF.)



4. PACKAGING DRAWING REFERS TO PK-67913-001.

<p>NEW RELEASE</p> <p>EC NO: 2005/06/16</p> <p>DRWN: QLZHANG</p> <p>CHKD: CHIKD</p> <p>APPR:</p>	<p>QUALITY SYMBOLS</p> <p>▽=0</p> <p>▽C=0</p>	GENERAL TOLERANCES (UNLESS SPECIFIED)		DIMENSION STYLE	SCALE	DESIGN UNITS	THIRD ANGLE PROJECTION			
				MM ONLY	1:1	METRIC				
		4 PLACES	± ---	± ---	DRAWN BY	DATE	TITLE			
		3 PLACES	± ---	± ---	QLZHANG	2005/05/26	SD/IO CARD CONN. REVERSE TYPE WITH PUSH PUSH (LEAD-FREE)			
2 PLACES	± 0.25	± ---	CHECKED BY	DATE	MOLEX INCORPORATED					
1 PLACE	± 0.25	± ---	APPROVED BY	DATE	DOCUMENT NO. SD-67913-003					
		ANGULAR ± 3 °	MATERIAL NO.		SHEET NO. 3 OF 3					
		DRAFT WHERE APPLICABLE MUST REMAIN WITHIN DIMENSIONS	SEE SHEET 1		THIS DRAWING CONTAINS INFORMATION THAT IS PROPRIETARY TO MOLEX INCORPORATED AND SHOULD NOT BE USED WITHOUT WRITTEN PERMISSION					

9 8 7 6 5 4 3 2 1