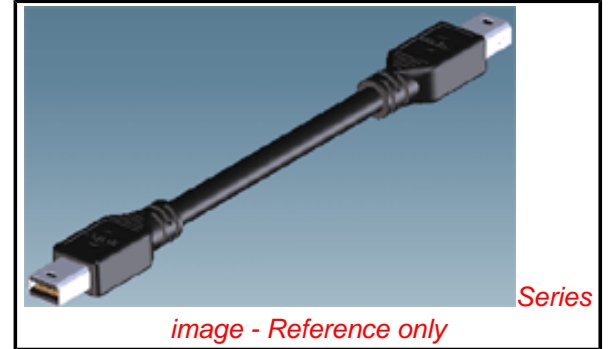


PLEASE CHECK WWW.MOLEX.COM FOR LATEST PART INFORMATION

Part Number: **0687850005**
Status: **Active**
Overview: displayport
Description: Mini DisplayPort*(Plug)-to-Mini DisplayPort*(Plug) Cable Assembly, 1.5m (4.92'), Lead-free

Documents:

[Drawing \(PDF\)](#) [RoHS Certificate of Compliance \(PDF\)](#)
[Product Specification PS-68785-0004 \(PDF\)](#)



General

Product Family	Cable Assemblies
Series	<u>68785</u>
Connector to Connector	Mini DisplayPort* Both Ends
Overview	<u>displayport</u>
Product Name	DisplayPort*, Mini DisplayPort*

Physical

Cable Length	1.50m (4.92')
Circuits (Loaded)	20
Color - Resin	Black
Gender	Male-Male
Lock to Mating Part	Yes
Material - Metal	Copper Alloy
Material - Plating Mating	Gold
Material - Resin	High Temperature Thermoplastic
Packaging Type	Carton
Pitch - Mating Interface (in)	0.024 In
Pitch - Mating Interface (mm)	0.60 mm
Single Ended	No
Waterproof / Dustproof	No
Wire Insulation Diameter	N/A
Wire/Cable Type	Round

Electrical

Current - Maximum per Contact	.5A
Impedance	100 ohms
Shield Type	Full Shield
Shielded	Yes
Voltage - Maximum	40V AC

Material Info

Reference - Drawing Numbers

Product Specification	PS-68785-0004
Sales Drawing	SD-68785-0004

Mini DisplayPort* and DisplayPort* are trademarks or registered trademarks of VESA

EU RoHS

**ELV and RoHS
Compliant**
**REACH SVHC
Not Reviewed**
**Halogen-Free
Status**

China RoHS



**Need more information on product
environmental compliance?**

Email productcompliance@molex.com
 For a multiple part number RoHS Certificate of Compliance, [click here](#)

Please visit the [Contact Us](#) section for any non-product compliance questions.

Search Parts in this Series

68785Series

Mates With

105081 Mini DisplayPort* Receptacles

7

6

5

4

3

2

1

REVISIONS				DESCRIPTION	CHANGER
ECN NO	DATE	REVISION			
	SEP 07,09	A	INITIAL RELEASE		JOE XIE

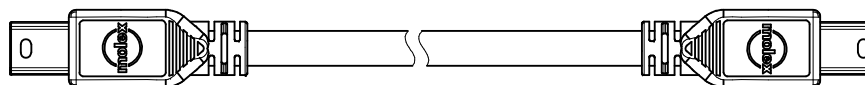
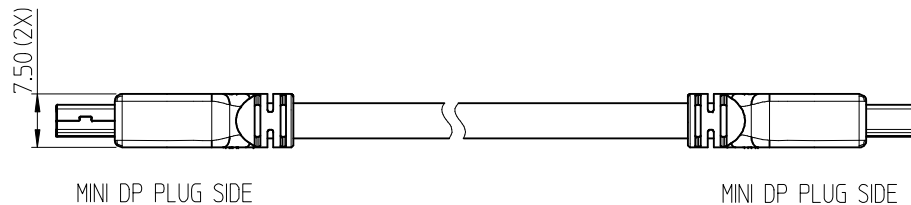
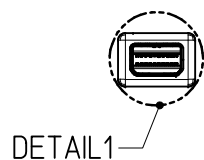
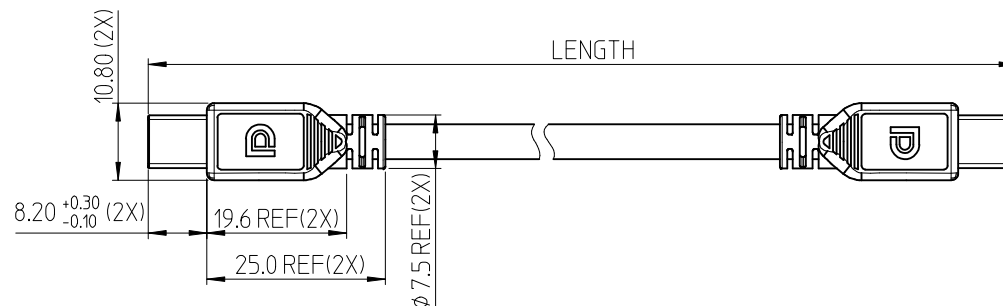
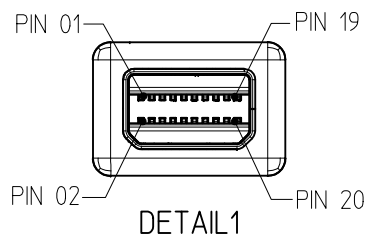


TABLE-1:

687850006	2000±40
687850005	1500±30
687850004	1000±20
PART NO.	LENGTH

EC NO: DG2010-0085 2009/11/02 DRW/N: YOXIE 2009/11/03 CHK/D: CLU0 APPR: CLU0 2009/11/03	DESCRIPTION A	QUALITY SYMBOLS ▽=0 ◻=0	GENERAL TOLERANCES (UNLESS SPECIFIED)		DIMENSION STYLE MM ONLY		SCALE ---	DESIGN UNITS METRIC	THIRD ANGLE PROJECTION
				mm	INCH	DRAWN BY	DATE	TITLE	MINIDP PLUG TO MINIDP PLUG CABLE ASSY
			4 PLACES	± ---	± ---	CHECKED BY	DATE		
			3 PLACES	± ---	± ---	APPROVED BY	DATE		
			2 PLACES	± 0.25	± ---				
			1 PLACE	± 0.5	± ---				
			ANGULAR ± 3 °				MOLEX INCORPORATED		
			DRAFT WHERE APPLICABLE MUST REMAIN WITHIN DIMENSIONS		MATERIAL NO. SEE TABLE-1		DOCUMENT NO. SD-68785-0004		SHEET NO. 1 OF 2
					SIZE A4		THIS DRAWING CONTAINS INFORMATION THAT IS PROPRIETARY TO MOLEX INCORPORATED AND SHOULD NOT BE USED WITHOUT WRITTEN PERMISSION		

6

5

4

3

2

1

7

6

5

4

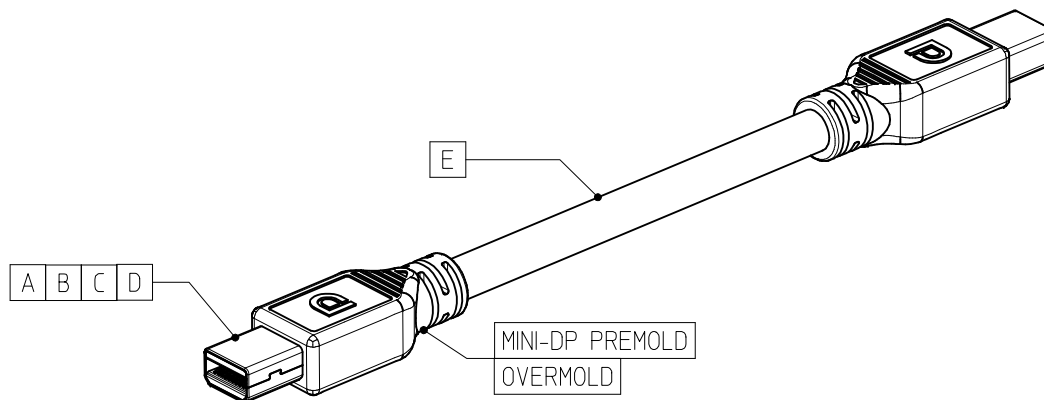
3

2

1

WIRING DIAGRAM

MINI DP PLUG SOURCE SIDE	FUNCTION	MINI DP PLUG SINK SIDE
PIN 01	GROUND	PIN 08
PIN 03	ML0+	PIN 12
PIN 05	ML0-	PIN 10
PIN 07	GROUND	PIN 13
PIN 09	ML1+	PIN 17
PIN 11	ML1-	PIN 15
PIN 13	GROUND	PIN 07
PIN 15	ML2+	PIN 11
PIN 17	ML2-	PIN 09
PIN 19	GROUND	PIN 19
PIN 02	HOT PLUG DETECT	PIN 02
PIN 04	CONFIG 1	PIN 04
PIN 06	CONFIG 2	PIN 06
PIN 08	GROUND	PIN 01
PIN 10	ML3+	PIN 05
PIN 12	ML3-	PIN 03
PIN 14	GROUND	PIN 14
PIN 16	AUX+	PIN 16
PIN 18	AUX-	PIN 18
PIN 20	NO CONNECTION	PIN 20
SHELL	GROUND	SHELL



NOTES:

1. MATERIALS:

OVERMOLD: PVC, COLOR BLACK, UL94-V0.
 CABLE: PVC JACKET, BLACK, UL94-VW-1.
 HOUSING: HIGH TEMPERATURE THERMOPLASTIC.
 TERMINAL: COPPER ALLOY, GOLD PLATING, NICKEL UNDERPLATE.
 SHELL: COPPER ALLOY, NICKEL PLATING.

2. ELECTRICAL PROPERTY:

3.1 APPLIED VOLTAGE RATING: 40V AC (RMS).
 3.2 CURRENT RATING: 0.5A.
 3.3 DIELECTRIC WITHSTAND: 300V.
 3.4 INSULATION RESISTANCE: 100M OHM (UNMATING),
 10M OHM (MATING).

3. OPERATION TEMPERATURE: -20°C TO +80°C.

4. THE PRODUCT COMPLIANT TO MOLEX ES-40000-5016.

ITEM	DESCRIPTION	MATERIAL	USAGE
E	MINI DP CABLE	---	---
D	BOTTOM SHELL FOR MINI DP PLUG	COPPER ALLOY	2 PCS
C	TOP SHELL FOR MINI DP PLUG	COPPER ALLOY	2 PCS
B	SHIELD SHELL FOR MINI DP PLUG	COPPER ALLOY	2 PCS
A	SUB-ASSEMBLY FOR MINI DP PLUG	---	2 PCS

EC NO: DG2010-0085 2009/11/02 DRWN:YOXIE CHKD:CLU0 APPR:CLU0 2009/11/03	DESCRIPTION	QUALITY SYMBOLS	GENERAL TOLERANCES (UNLESS SPECIFIED)	DIMENSION STYLE	SCALE	DESIGN UNITS	THIRD ANGLE PROJECTION
		▼=0 ▽=0	mm INCH 4 PLACES ± --- ± --- 3 PLACES ± --- ± --- 2 PLACES ± 0.25 ± --- 1 PLACE ± 0.5 ± --- ANGULAR ± 3 °	MM ONLY	---	METRIC	
A	REV	DRAFT WHERE APPLICABLE MUST REMAIN WITHIN DIMENSIONS	DRAWN BY DATE	MINIDP PLUG TO MINIDP PLUG CABLE ASSY			
				CHECKED BY DATE APPROVED BY DATE MATERIAL NO. SEE TABLE-1 DOCUMENT NO. SD-68785-0004 SHEET NO. 2 OF 2			
A		A		THIS DRAWING CONTAINS INFORMATION THAT IS PROPRIETARY TO MOLEX INCORPORATED AND SHOULD NOT BE USED WITHOUT WRITTEN PERMISSION			

6

5

4

3

2

1