



Data Sheet

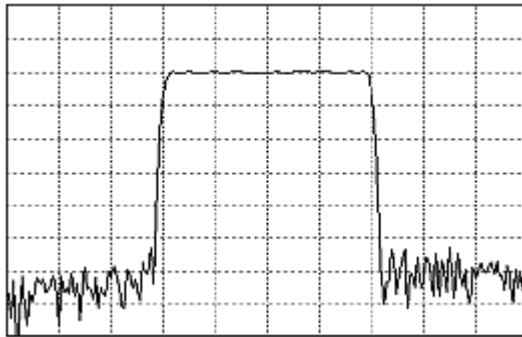


Product Category: IF SAW Filter

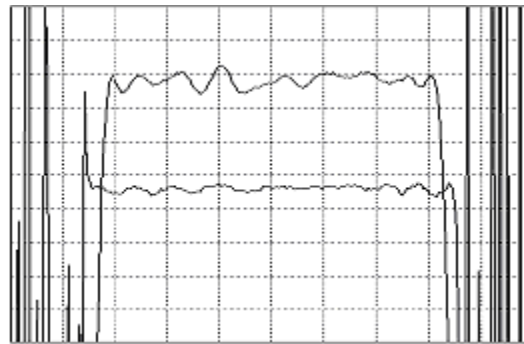
Part Number: 820-IF70.0M-HR Package: 20.2 x 12.6 Thru Hole Application: Base Station & Repeater Last Modified: May 30 2003

TYPE :
70.0 MHz Bandpass Filter
19.5 MHz Bandwidth

PART NUMBER :
820-IF70.0M-HR



Horizontal : 5.0 MHz/Div
Vertical : 10 dB/Div



Horizontal : 3.0 MHz/Div
Vertical : 1 dB/Div
Vertical : 100 ns/Div

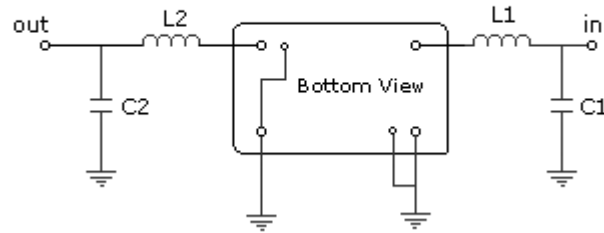
OPERATING CONDITIONS / ELECTRICAL CHARACTERISTICS

PARAMETERS	Minimum	Typical	Maximum	Units
Center Frequency	69.94	70.00	70.06	MHz
Insertion Loss	-	24.0	26.0	dB
1dB Bandwidth	19.00	19.15	-	MHz
3dB Bandwidth	19.50	19.60	-	MHz
40dB Bandwidth	-	21.45	21.70	MHz
Passband Ripple	-	0.8	1.0	dB
Group Delay Variation	-	30	80	nsec
Absolute Delay	-	1.98	-	µsec
Ultimate Rejection	50	55	-	dB
Substrate Material	-	LN	-	-
Ambient Temperature	-	25	-	°C

* Custom SAW IF Filters available. Contact Oscilent for assistance.

PACKAGE OUTLINE (mm)

TEST FIXTURE



L1 = 150nH C1 = 0pF
 L2 = 220nH C2 = 43pF
 Source/Load Impedance = 50 ohms

Oscilent Corporation - CALL **949.252.0522**

17962 Sky Park Circle, Building D, Irvine, CA 92614, USA
 Fax: 949.252.0599, E-Mail: Sales@Oscilent.com

Part No.: 820-IF70.0M-HR