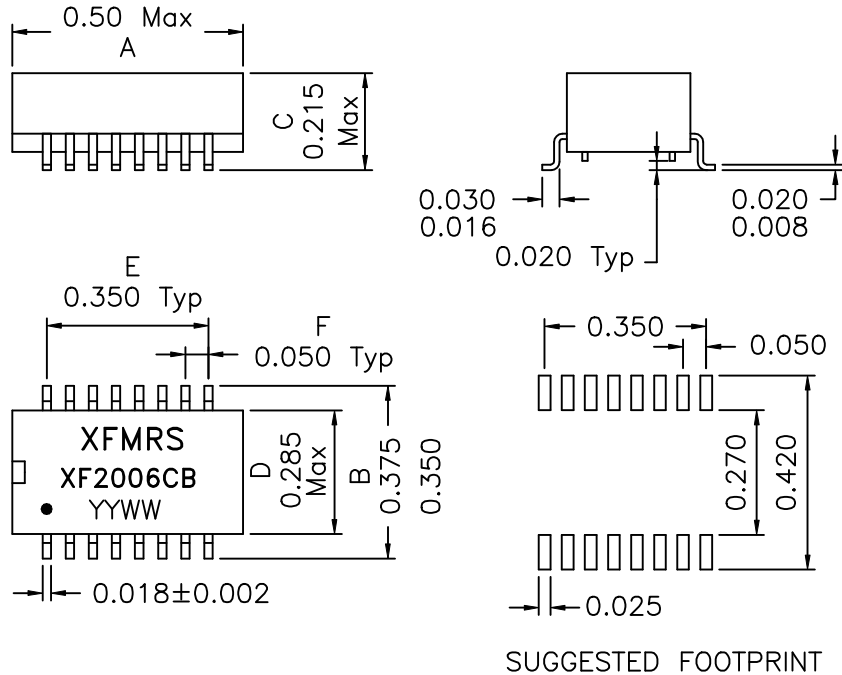
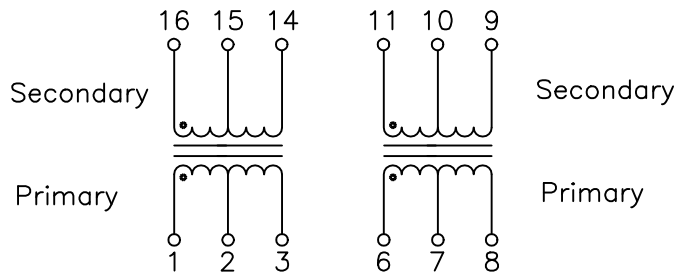


### 1. Dimensions:



### 2. Schematic:



### 3. Electrical Specifications: @25°C

- Isolation Voltage: 1500 VAC
- Turns Ratio: (1-2-3):(16-15-14)=1CT:1CT ±2%
- Turns Ratio: (6-7-8):(11-10-9)=1CT:1CT ±2%
- PRI OCL: 200uH±20% @100KHz 50mV
- Cw/w: 10pF Maximum @100KHz 50mV (Pri/Sec)
- Leakage Inductance: 0.20uH Maximum @100KHz 50mV @PRI, WITH SEC SHORTED
- PRI DC Resistance: 0.30 Ohms Maximum
- SEC DC Resistance: 0.30 Ohms Maximum

#### Notes:

- Solderability: Leads shall meet MIL-STD-202, Method 208D for solderability.
- Flammability: UL94V-0
- ASTM oxygen index: > 28%
- Temperature rating: 155°C. UL file E151556
- Operating Temperature Range: -40°C to +85°C

DOC. REV: A/3

<b>XFMRs Inc</b>		Title: 10 BASE T ISOLATION MAGNETICS	
UNLESS OTHERWISE SPECIFIED		P/N: XF2006CB	REV. A
TOLERANCES: .xxx ±0.010		DWN. 廖玉坤	Jan-12-02
Dimensions in Inch		CHK. 李清儿	Jan-12-02
SHEET 1 OF 1		APP. Joe Huff	Jan-12-02