

PLEASE CHECK WWW.MOLEX.COM FOR LATEST PART INFORMATION

Part Number: [0871300700](#)
Status: **Active**
Description: 2.50mm (.098") Pitch Cable Holder, for Discrete Wire, Flat Cable and Ribbon Cable 7 Circuits

Documents:

[3D Model](#) [Product Specification PS-87130-001 \(PDF\)](#)
[Drawing \(PDF\)](#) [RoHS Certificate of Compliance \(PDF\)](#)

Agency Certification

CSA LR19980

General

Product Family Ribbon Cable / Wire Trap Connectors
 Series [87130](#)
 Component Type One Piece
 Glow-Wire Compliant No
 Product Name Board-In, Cable Holder

Physical

Circuits (Loaded) 7
 Circuits (maximum) 7
 Color - Resin Natural
 Entry Angle Vertical
 Flammability 94V-0
 Lock to Mating Part None
 Material - Resin Polyester
 Number of Rows 1
 PCB Locator Yes
 PCB Retention Yes
 PCB Thickness Recommended (in) 0.062 In
 PCB Thickness Recommended (mm) 1.60 mm
 Packaging Type Bag
 Pitch - Mating Interface (in) 0.098 In
 Pitch - Mating Interface (mm) 2.50 mm
 Pitch - Term. Interface (in) 0.098 In
 Pitch - Term. Interface (mm) 2.50 mm
 Polarized to Mating Part Yes
 Polarized to PCB No
 Shrouded Fully
 Stackable No
 Surface Mount Compatible (SMC) No
 Temperature Range - Operating -25°C to +85°C
 Wire Insulation Diameter 1.60mm (.063") max.
 Wire Size AWG 24, 26
 Wire/Cable Type Discrete Wire, Ribbon Cable

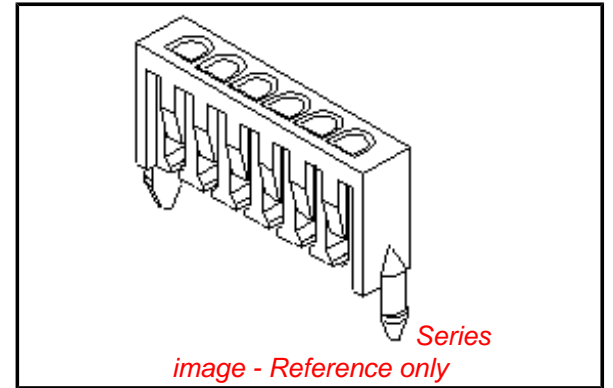
Electrical

Current - Maximum per Contact 1A
 Voltage - Maximum 125V

Material Info

Reference - Drawing Numbers

Product Specification PS-87130-001
 Sales Drawing SD-87130-**00



EU RoHS

ELV and RoHS Compliant
REACH SVHC Contains SVHC: No
Halogen-Free Status

China RoHS



Not Halogen-Free

Need more information on product environmental compliance?

Email productcompliance@molex.com
 For a multiple part number RoHS Certificate of Compliance, [click here](#)

Please visit the [Contact Us](#) section for any non-product compliance questions.

Search Parts in this Series

[87130Series](#)

Mates With

N/A

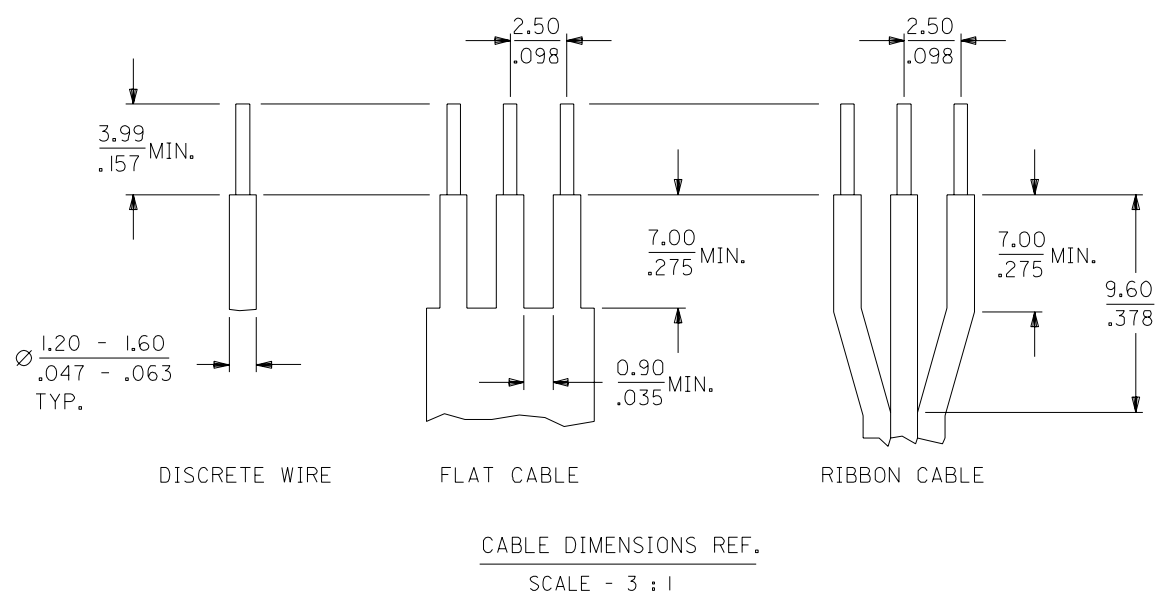
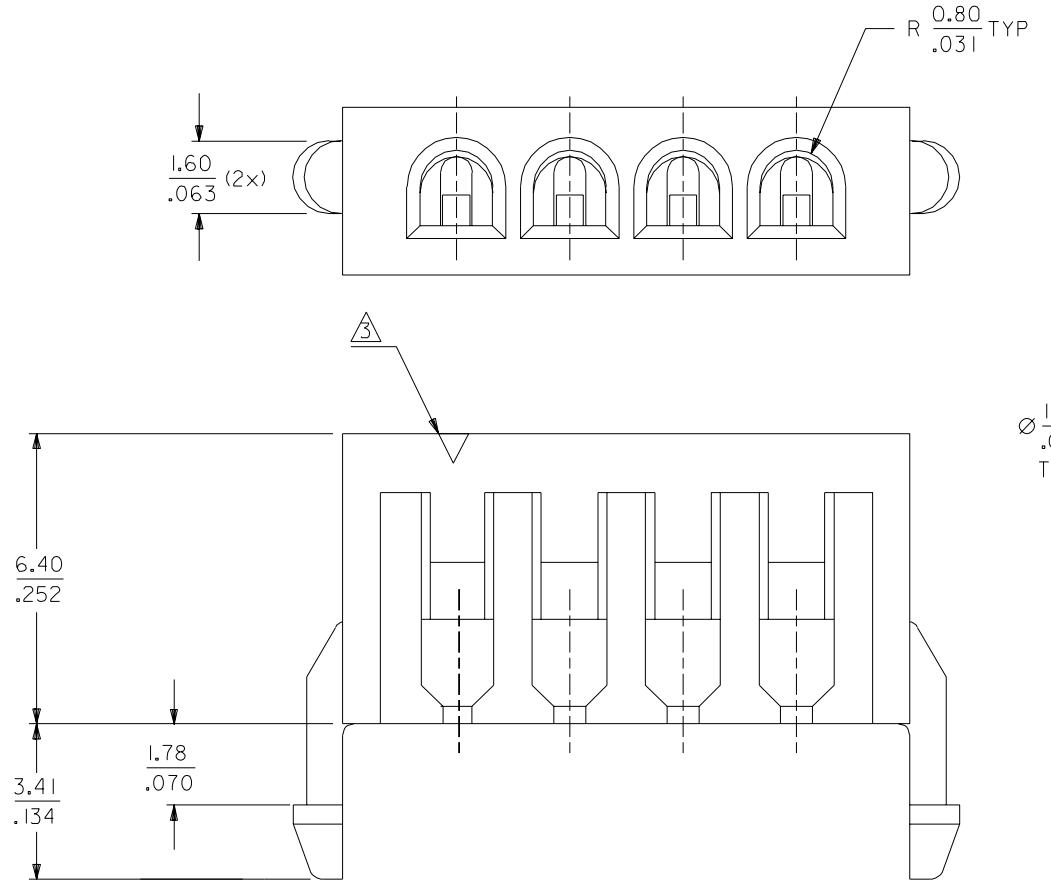
Use With

Discrete Wire, Flat Cable, or Ribbon Cable

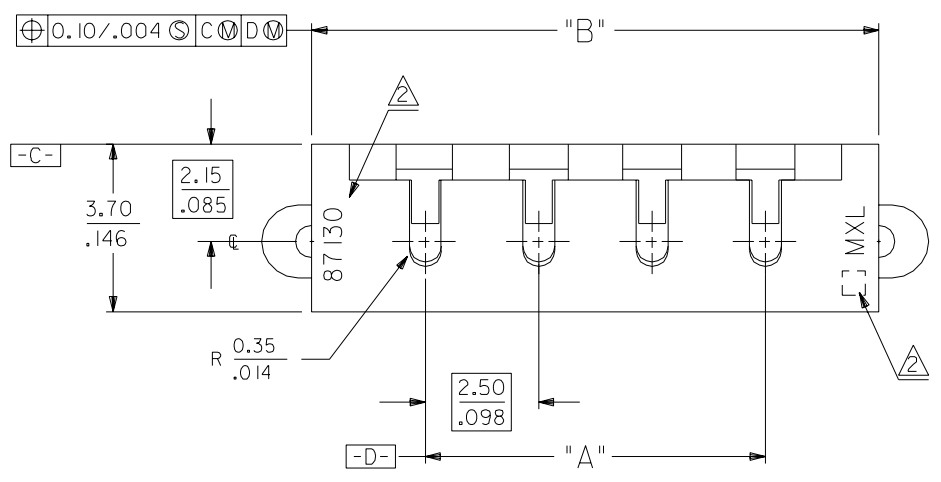
This document was generated on 04/19/2010

PLEASE CHECK WWW.MOLEX.COM FOR LATEST PART INFORMATION

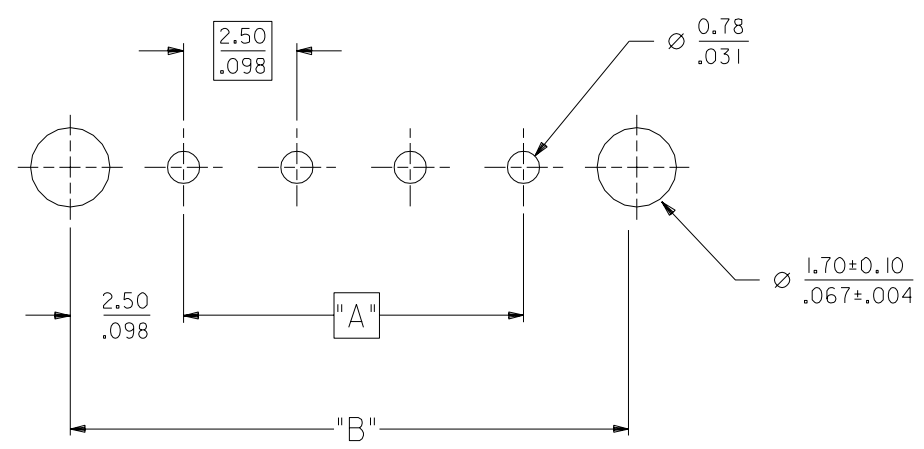
DWG. NO. SD 87130-**-00
 CAD FILE S87130.DGN



| ENG. NO. | CKT SIZE | DIM "A" | | DIM "B" | |
|------------|----------|---------|-------|---------|-------|
| | | MM | INCH | MM | INCH |
| 87130-0200 | 2 | 2.50 | .098 | 7.50 | .295 |
| 87130-0300 | 3 | 5.00 | .197 | 10.00 | .394 |
| 87130-0400 | 4 | 7.50 | .295 | 12.50 | .492 |
| 87130-0500 | 5 | 10.00 | .394 | 15.00 | .591 |
| 87130-0600 | 6 | 12.50 | .492 | 17.50 | .689 |
| 87130-0700 | 7 | 15.00 | .591 | 20.00 | .787 |
| 87130-0800 | 8 | 17.50 | .689 | 22.50 | .886 |
| 87130-0900 | 9 | 20.00 | .787 | 25.00 | .984 |
| 87130-1000 | 10 | 22.50 | .886 | 27.50 | 1.083 |
| 87130-1100 | 11 | 25.00 | .984 | 30.00 | 1.181 |
| 87130-1200 | 12 | 27.50 | 1.083 | 32.50 | 1.280 |
| 87130-1300 | 13 | 30.00 | 1.181 | 35.00 | 1.378 |
| 87130-1400 | 14 | 32.50 | 1.280 | 37.50 | 1.476 |
| 87130-1500 | 15 | 35.00 | 1.378 | 40.00 | 1.575 |
| 87130-1600 | 16 | 37.50 | 1.476 | 42.50 | 1.673 |
| 87130-1700 | 17 | 40.00 | 1.575 | 45.00 | 1.772 |
| 87130-1800 | 18 | 42.50 | 1.673 | 47.50 | 1.870 |
| 87130-1900 | 19 | 45.00 | 1.772 | 50.00 | 1.969 |
| 87130-2000 | 20 | 47.50 | 1.870 | 52.50 | 2.067 |



- NOTES:
- FOR ILLUSTRATION PURPOSES, 4 CIRCUITS HAS BEEN SHOWN.
 - MXL LOGO, CAVITY IDENT, ENG. NO., CKT IDENT TO BE AS LARGE AS POSSIBLE AND AS LOCATED.
 - 1st CKT IDENTIFICATION.
 - PARTS TO BE FLAT WITHIN .0045mm/mm AT WIRE ENTRY POSITION.
 - THIS WIRE HOLDER IS FOR USE WITH 26 TO 24 AWG WIRE.



RECOMMENDED P.C. BOARD LAYOUT
 PCB THICKNESS = 1.57mm

MM
 INCH

| | | | | | | | |
|---------------------------|------------------------------|-----|-----|--|-----------|--|-----------------------------|
| | | | | MATERIAL : VALXO 310, UL 94V-0 COLOR : NATURAL | | MOLEX SINGAPORE PTE LTD SHEET 1 OF 1 | |
| | | | | FINISH : | | GENERAL TOLERANCES ± 0.20/.008 | |
| AI | ADD 16 TO 20 CKT PER PDR* | - | SEE | 991012 | REV AI | | |
| | 99-09-9019 (ECN# S2000-0181) | - | | | DWG. NO.: | | |
| A | RFM PER S1252 | | TAY | NK | 901116 | SD 87130-**-00 | |
| LTR | REVISION RECORD | ECN | DR | CHK | DATE | DRAWN BY T A Y 880518 | CHK'D BY N K WONG 880519 |
| REVISE ONLY ON CAD SYSTEM | | | | APPR'D BY N K WONG 880520 | | SCALE 6 : 1 | |
| | | | | | | TITLE : 2.5mm CABLE HOLDER | |

DO NOT SCALE DRAWING