

PLEASE CHECK WWW.MOLEX.COM FOR LATEST PART INFORMATION

Part Number: **0700580096**
Status: **Active**
Overview: [cgrid_sl_products](#)
Description: SL™ Crimp Terminal 70058, 24-30 AWG, Loose, Tin (Sn)

Documents:

Drawing (PDF)	Product Specification PS-70400 (PDF)
Packaging Specification (PDF)	RoHS Certificate of Compliance (PDF)
Product Specification PS-70058 (PDF)	

General

Product Family	Crimp Terminals
Series	70058
Crimp Quality Equipment	Yes
Overview	cgrid_sl_products
Product Name	SL™

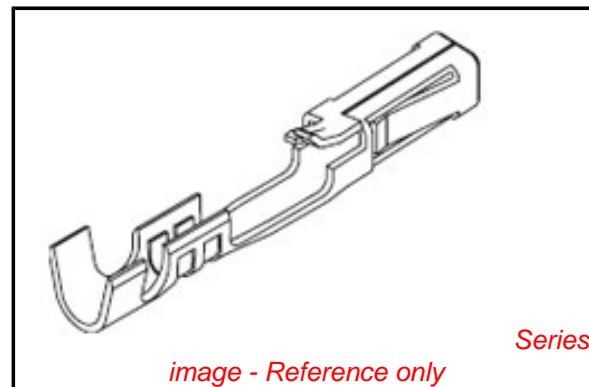
Physical

Gender	Female
Material - Metal	Phosphor Bronze
Material - Plating Mating	Tin
Material - Plating Termination	Tin
Packaging Type	Reel
Plating min: Mating (µin)	150
Plating min: Mating (µm)	3.81
Plating min: Termination (µin)	75
Plating min: Termination (µm)	1.910
Termination Interface: Style	Crimp or Compression
Wire Insulation Diameter	1.52mm (.060") max.
Wire Size AWG	24, 26, 28, 30
Wire Size mm²	N/A

Material Info

Reference - Drawing Numbers

Packaging Specification	PK-70873-0822
Product Specification	PS-70058, PS-70400
Sales Drawing	SD-70058-096



EU RoHS

ELV and RoHS Compliant
REACH SVHC
Contains SVHC: No
Halogen-Free
Status

China RoHS



Not Reviewed

Need more information on product environmental compliance?

Email productcompliance@molex.com
 For a multiple part number RoHS Certificate of Compliance, [click here](#)

Please visit the [Contact Us](#) section for any non-product compliance questions.

Search Parts in this Series

70058Series

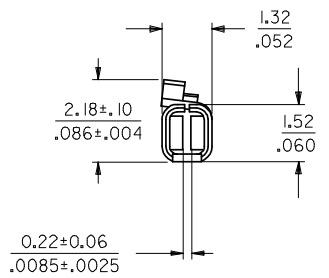
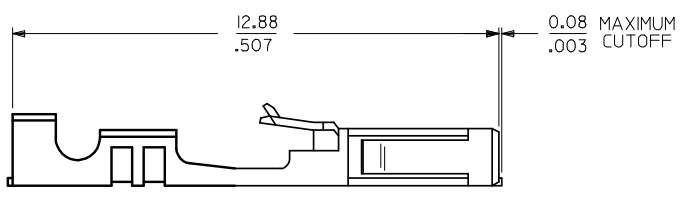
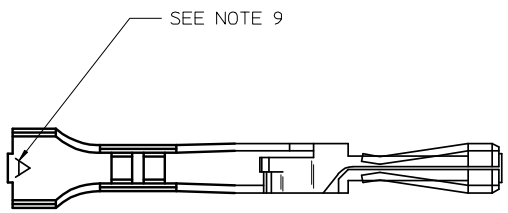
Application Tooling | [FAQ](#)

Tooling specifications and manuals are found by selecting the products below. Crimp Height Specifications are then contained in the Application Tooling Specification document.

Global

Description	Product #
Hand Crimp Tool, UL0638118800 Approved	
Insertion Tool	0011020022

ITEM NUMBER	FINISH	NOTES
70058-0096	POST-PLATE	ALL EDGES COVERED BY PLATING EXCEPT FOR CUT-OFFS OF THE CARRIERS.
70058-4096	PRE-PLATE	ALL CUT EDGES WILL BE EXPOSED AND WILL NOT HAVE PLATING.



- NOTES:
1. TERMINAL MATERIAL: PHOSPHOR BRONZE.
 2. FINISH: POST-PLATE: 3.81 MICROMETERS/150 MICROINCHES MINIMUM TIN (Sn) IN CONTACT AREA, 1.91 MICROMETERS/75 MICROINCHES MINIMUM TIN (Sn) IN CRIMP AREA, NICKEL UNDERPLATE OVERALL.
PRE-PLATE: 3.81 MICROMETERS/150 MICROINCHES MINIMUM TIN (Sn) OVER NICKEL UNDERPLATE OVERALL.
 3. TERMINAL TO BE USED IN HOUSING 70066-**** AND 70450-****.
 4. REFER TO PRODUCT SPECIFICATION PS-70058.
 5. REFER TO MOLEX OPERATIONS AND SERVICE MANUAL FOR CRIMP DETAILS.
 6. TERMINAL TO BE USED WITH 0.64/.025 SQUARE PINS.
 7. TERMINAL TO BE USED WITH 24-30 AWG STRANDED WIRE WITH 1.52/.060 MAXIMUM DIAMETER INSULATION.
 8. TERMINALS SUPPLIED LOOSE PER DRAWING PK-70873-0822.
 9. CRIMP SIZE INDICATOR A=24-30 AWG.

INITIAL RELEASE EC NO: UCP2008-1091 DRWN:DMORGAN 2008/07/01 CHK:DMSTIBARRA 2008/07/01 APPR:SMILLER 2008/07/02	QUALITY SYMBOLS	GENERAL TOLERANCES (UNLESS SPECIFIED)	DIMENSION STYLE	SCALE	DESIGN UNITS	THIRD ANGLE PROJECTION
	▼=0 ▽=0	mm INCH	MM/IN	INCH	INCH	
		4 PLACES ± --- ± ---	DRAWN BY DATE	TITLE		
		3 PLACES ± --- ± .005	DMORGAN 2007/11/12	TERMINAL - BOX/CRIMP		
	2 PLACES ± 0.13 ± .010	CHECKED BY DATE	TIN PLATED FOR 24-30 AWG			
	1 PLACE ± 0.25 ± ---	MSIBARRA 2007/11/12	STRANDED WIRE PKG LOOSE			
	ANGULAR ± 1/2°	APPROVED BY DATE	MOLEX INCORPORATED			
		SMILLER 2007/11/12	MATERIAL NO. SEE CHART			
			DOCUMENT NO. SD-70058-096			
			SHEET NO. 1 OF 1			
		DRAFT WHERE APPLICABLE MUST REMAIN WITHIN DIMENSIONS	THIS DRAWING CONTAINS INFORMATION THAT IS PROPRIETARY TO MOLEX INCORPORATED AND SHOULD NOT BE USED WITHOUT WRITTEN PERMISSION			