

PLEASE CHECK WWW.MOLEX.COM FOR LATEST PART INFORMATION

Part Number: **0039000340**
Status: **Active**
Overview: standard_062
Description: 1.57mm (.062") Diameter, Standard .062" Pin and Socket Crimp Terminal, 3.68mm (.145") Pitch, Female, Gold (Au) Plated Brass Contact, 22-28 AWG, Reel

Documents:

[Drawing \(PDF\)](#) [RoHS Certificate of Compliance \(PDF\)](#)
[Product Specification PS-1855-001 \(PDF\)](#)

General

Product Family Crimp Terminals
 Series 1855
 Crimp Quality Equipment Yes
 Overview standard_062
 Product Name Standard .062"

Physical

Gender Female
 Material - Metal Brass
 Material - Plating Mating Gold
 Material - Plating Termination Gold
 Packaging Type Reel
 Plating min: Mating (µin) 14
 Plating min: Mating (µm) 0.35
 Plating min: Termination (µin) 14
 Plating min: Termination (µm) 0.35
 Termination Interface: Style Crimp or Compression
 Wire Insulation Diameter 1.10-1.50mm (.043-.059")
 Wire Size AWG 22, 24, 26, 28
 Wire Size mm² N/A

Electrical

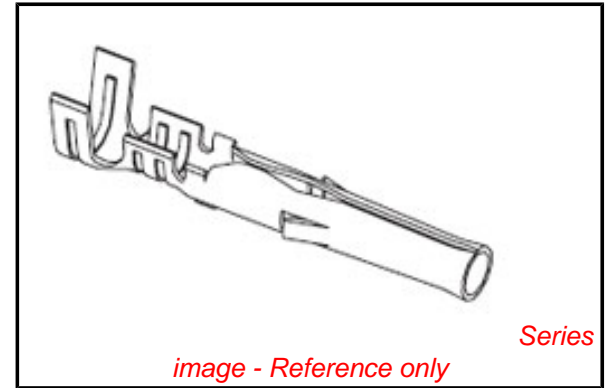
Current - Maximum per Contact 3A
 Voltage - Maximum 250V

Material Info

Old Part Number 1855G

Reference - Drawing Numbers

Product Specification PS-1855-001
 Sales Drawing SD-1855*



EU RoHS

ELV and RoHS Compliant
REACH SVHC Contains SVHC: No
Halogen-Free Status
Not Reviewed

China RoHS



Need more information on product environmental compliance?

Email productcompliance@molex.com
 For a multiple part number RoHS Certificate of Compliance, [click here](#)

Please visit the [Contact Us](#) section for any non-product compliance questions.

Search Parts in this Series

1855Series

Use With

1625nr Receptacle Housing, 1625np Plug Housing

Application Tooling | FAQ

Tooling specifications and manuals are found by selecting the products below. Crimp Height Specifications are then contained in the Application Tooling Specification document.

Global

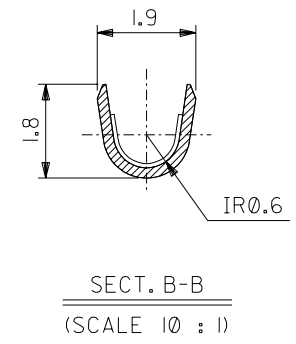
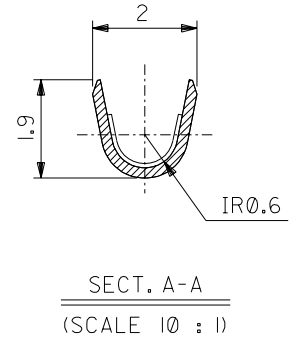
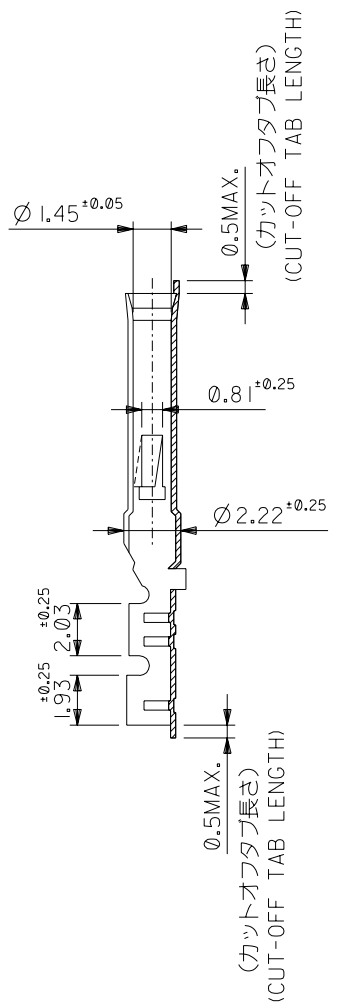
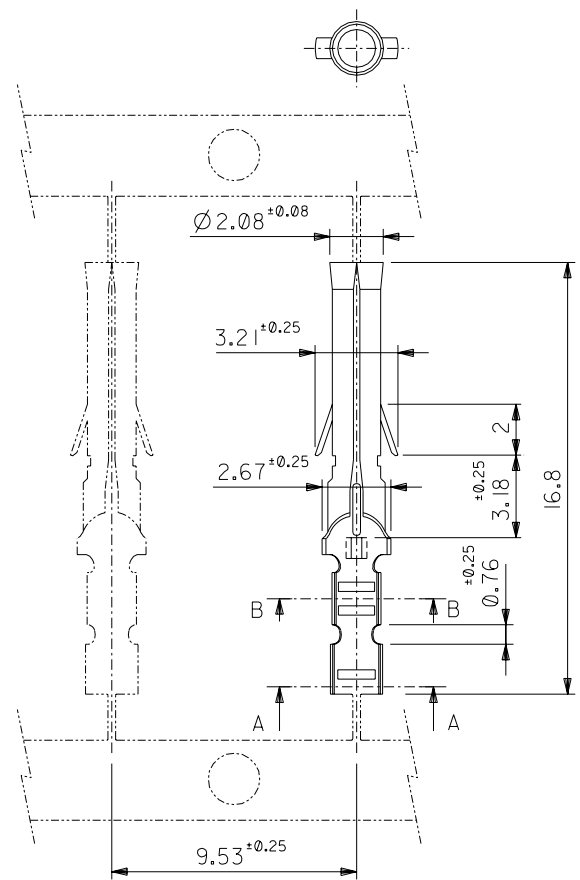
Description	Product #
Mini-Mac™ Applicator	<u>0638914000</u>
Hand Crimp Tool	<u>0638190800</u>
Manual Extraction Tool	<u>0011030002</u>

Japan

Description	Product #
Applicator for M211A Bench Press, 18-28	<u>0011260072</u>

This document was generated on 05/19/2010

PLEASE CHECK WWW.MOLEX.COM FOR LATEST PART INFORMATION



注記 NOTES:
 1. 一般公差 : ± 0.4
 GENERAL TOLERANCES: ± 0.4

ニッケル (2 μm MIN.) 下地 金 (0.35 μm MIN.) GOLD (0.35 μm MIN.) OVER NICKEL (2 μm MIN.)	39-00-0341	1855GL	バラ端子 LOOSE
銅 (0.5 μm MIN.) 下地 錫 (0.9 μm MIN.) TIN (0.9 μm MIN.) OVER COPPER (0.5 μm MIN.)	39-00-0339	1855TL	バラ端子 LOOSE
メッキ PLATING	39-00-0338	1855T	連鎖状端子 CHAIN
	EDP.NO.	ENG.NO.	形状 FORM

材料 MATERIAL 黄銅 BRASS	0.2 t	molex MOLEX-JAPAN CO.,LTD. 日本モレックス株式会社
仕上げ FINISH	—	
適用電線範囲 WIRE RANGE	AWG#22-#28	REVISE ONLY ON CAD SYSTEM
被覆外径 INS. RANGE	$\varnothing 1.1 \sim 1.5$	TITLE 名称 .062 DIA. CRIMP FEMALE TERMINAL
DRAWN BY '93/07/09 H.HASEGAWA	CHK'D BY '93/07/09 H.HIRAMOTO	DWG. NO.
APP'D BY '93/07/09 M.FUKUSHIMA	尺度 SCALE	5 : 1
記号 LTR	変更内容 REVISION RECORD	DR. CHK.
	日付 DATE	REV

角度 ANGLE	± 30
30 以上 OVER	± 0.3
10 以上 30 未満 OVER 30 UNDER	± 0.25
10 未満 UNDER	± 0.2
一般公差 GENERAL TOLERANCES	