

PLEASE CHECK WWW.MOLEX.COM FOR LATEST PART INFORMATION

Part Number: [0190180002](#)
Status: **Active**
Description: VibraKrimp™ Quick Disconnect, Female, for 18-22 (0.80-0.35) Wire, Box, Tab 4.75mm (.187") x 0.81mm (.032")

Documents:

[Drawing \(PDF\)](#) [RoHS Certificate of Compliance \(PDF\)](#)
[Product Specification PS-19902-005 \(PDF\)](#)

Agency Certification

CSA LR18689
 UL E79133

General

Product Family Quick Disconnects
 Series [19018](#)
 Comments Butted Seam
 Crimp Quality Equipment Yes
 Product Name VibraKrimp™
 Type Quick Disconnect

Physical

Barrel Type Closed
 Gender Female
 Glow-Wire Compliant No
 Insulation None
 Lock to Mating Part None
 Material - Metal Brass
 Orientation Straight
 Packaging Type Bag
 Polarized to Mating Part No
 Tab Thickness 0.81mm (.032")
 Tab Width 4.75mm (.187")
 Temperature Range - Operating Per Wire Specification
 Wire Insulation Diameter 1.50-3.20mm (.060-.125") max.
 Wire Size AWG 18, 20, 22
 Wire Size mm² 0.35 - 0.80

Electrical

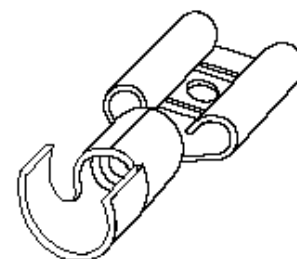
Voltage - Maximum Per Wire Specification

Material Info

Old Part Number AA-4173-032

Reference - Drawing Numbers

Product Specification PS-19902-005
 Sales Drawing SD-19018-001



Series

image - Reference only

EU RoHS

ELV and RoHS Compliant
REACH SVHC Contains SVHC: No
Halogen-Free Status

China RoHS



Need more information on product environmental compliance?

Email productcompliance@molex.com
 For a multiple part number RoHS Certificate of Compliance, [click here](#)

Please visit the [Contact Us](#) section for any non-product compliance questions.

Search Parts in this Series

[19018Series](#)

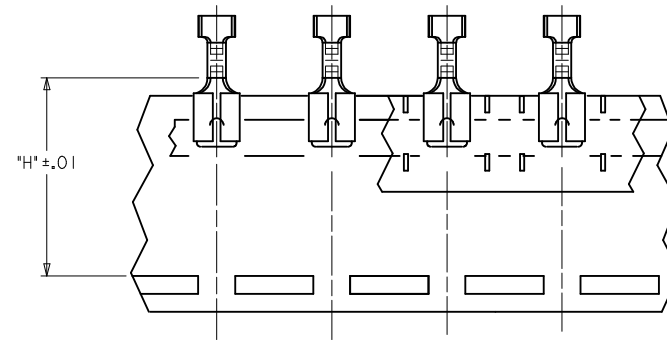
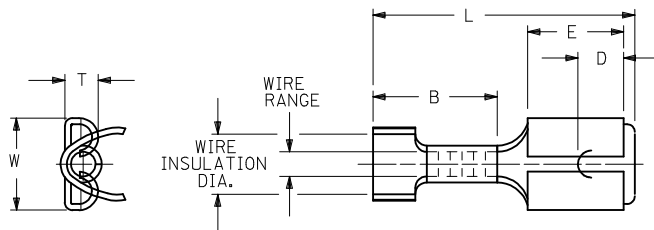
Application Tooling | [FAQ](#)

Tooling specifications and manuals are found by selecting the products below. Crimp Height Specifications are then contained in the Application Tooling Specification document.

Global

Description	Product #
ATP Perishable Tool Kit used in ATP presses that process product on tape	0190270046
Hand Crimp Tool	0640037200
Crimp Head for the AT-200™ Pneumatic Hand Tool	0640077200

13	12	11	10	9	8	7	6	5	4	3	2	1		
MATERIAL NO. LOOSE PIECE	ENGINEERING P/N LOOSE PIECE	MATERIAL NO. TAPE MOUNTED	ENGINEERING P/N TAPE MOUNTED	WIRE RANGE AWG	FITS TAB SIZE	STOCK THICK.	L ±.032	B ±.016	W ±.016	D ±.01	T ±.016	E ±.016	H NOMINAL	WIRE INSULATION DIAMETER REF.
190180044	M-4172	190180047	M-4172T	26-24	.187x.020 (4.75x0.51)	.016 (0.41)	.660 (16.76)	.315 (8.00)	.231 (5.87)	.12 (3.0)	.088 (2.24)	.250 (6.35)	.98 (24.9)	.040-.095 (1.02-2.41)
190180001	AA-4173	190180004	AA-4173T	22-18	.187x.020 (4.75x0.51)	.016 (0.41)	.692 (17.58)	.350 (8.89)	.231 (5.87)	.12 (3.0)	.088 (2.24)	.250 (6.35)	.98 (24.9)	.060-.125 (1.52-3.18)
190180011	BB-4174	190180013	BB-4174T	16-14	.187x.020 (4.75x0.51)	.016 (0.41)	.692 (17.58)	.350 (8.89)	.231 (5.87)	.12 (3.0)	.088 (2.24)	.250 (6.35)	.98 (24.9)	.085-.145 (2.16-3.68)
190180021	P-4175	190180055	P-4175T	14-12	.187x.020 (4.75x0.51)	.016 (0.41)	.692 (17.58)	.350 (8.89)	.231 (5.87)	.12 (3.0)	.088 (2.24)	.250 (6.35)	.98 (24.9)	.100-.175 (2.54-4.45)
190180045	M-4172-032	190180046	M-4172-032T	26-24	.187x.032 (4.75x0.81)	.016 (0.41)	.660 (16.76)	.315 (8.00)	.231 (5.87)	.12 (3.0)	.094 (2.39)	.250 (6.35)	.98 (24.9)	.040-.095 (1.02-2.41)
190180002	AA-4173-032	190180003	AA-4173-032T	22-18	.187x.032 (4.75x0.81)	.016 (0.41)	.692 (17.58)	.350 (8.89)	.231 (5.87)	.12 (3.0)	.094 (2.39)	.250 (6.35)	.98 (24.9)	.060-.125 (1.52-3.18)
190180012	BB-4174-032	190180036	BB-4174-032T	16-14	.187x.032 (4.75x0.81)	.016 (0.41)	.692 (17.58)	.350 (8.89)	.231 (5.87)	.12 (3.0)	.094 (2.39)	.250 (6.35)	.98 (24.9)	.085-.145 (2.16-3.68)
190180022	P-4175-032	190180023	P-4175-032T	14-12	.187x.032 (4.75x0.81)	.016 (0.41)	.692 (17.58)	.350 (8.89)	.231 (5.87)	.12 (3.0)	.094 (2.39)	.250 (6.35)	.98 (24.9)	.100-.175 (2.54-4.45)



Ⓐ TAPE-MOUNTED PARTS

SALES DRAWING

NOTES

1. MATERIAL: BRASS
2. PLATING: TIN
3. STYLE OF PART IS "VIBRAKRIMP" WITH CLOSED ELECTRICAL BARREL AND OPEN VIBRATION SUPPORT.
- Ⓐ 4. PART IS ROHS COMPLIANT.

CORRECT DIMS MARKED EC NO: WNA2009-0212 DRAWN: THRODAHL 2008/10/07 CHKD: JMACNEIL 2008/10/07 APPR: JMACNEIL 2008/10/08	QUALITY SYMBOLS	GENERAL TOLERANCES (UNLESS SPECIFIED)	DIMENSION STYLE	SCALE	DESIGN UNITS	THIRD ANGLE PROJECTION																																
	▽=0 ▽=0	<table border="1"> <thead> <tr> <th></th> <th>mm</th> <th>INCH</th> </tr> </thead> <tbody> <tr> <td>4 PLACES</td> <td>± ---</td> <td>± ---</td> </tr> <tr> <td>3 PLACES</td> <td>± ---</td> <td>± ---</td> </tr> <tr> <td>2 PLACES</td> <td>± ---</td> <td>± ---</td> </tr> <tr> <td>1 PLACE</td> <td>± ---</td> <td>± ---</td> </tr> </tbody> </table>		mm	INCH	4 PLACES	± ---	± ---	3 PLACES	± ---	± ---	2 PLACES	± ---	± ---	1 PLACE	± ---	± ---	<table border="1"> <thead> <tr> <th>IN/MM</th> <th>DATE</th> </tr> </thead> <tbody> <tr> <td>IN/MM</td> <td>1992/08/21</td> </tr> </tbody> </table>	IN/MM	DATE	IN/MM	1992/08/21	---	INCH	<table border="1"> <tr> <td>DRAWN BY</td> <td>DATE</td> </tr> <tr> <td>EMF</td> <td>1992/08/21</td> </tr> <tr> <td>CHECKED BY</td> <td>DATE</td> </tr> <tr> <td>APPROVED BY</td> <td>DATE</td> </tr> </table>	DRAWN BY	DATE	EMF	1992/08/21	CHECKED BY	DATE	APPROVED BY	DATE	<table border="1"> <tr> <td>TITLE</td> <td> QUICK DISCONNECT, VIBRAKRIMP, .187 TAB CLOSED ELEC/OPEN STRAIN </td> </tr> <tr> <td> </td> <td> MOLEX INCORPORATED </td> </tr> </table>	TITLE	QUICK DISCONNECT, VIBRAKRIMP, .187 TAB CLOSED ELEC/OPEN STRAIN		MOLEX INCORPORATED
		mm	INCH																																			
	4 PLACES	± ---	± ---																																			
3 PLACES	± ---	± ---																																				
2 PLACES	± ---	± ---																																				
1 PLACE	± ---	± ---																																				
IN/MM	DATE																																					
IN/MM	1992/08/21																																					
DRAWN BY	DATE																																					
EMF	1992/08/21																																					
CHECKED BY	DATE																																					
APPROVED BY	DATE																																					
TITLE	QUICK DISCONNECT, VIBRAKRIMP, .187 TAB CLOSED ELEC/OPEN STRAIN																																					
	MOLEX INCORPORATED																																					
DRAFT WHERE APPLICABLE MUST REMAIN WITHIN DIMENSIONS	MATERIAL NO. SEE CHART	DOCUMENT NO. SD-19018-001	SHEET NO. 1 OF 1																																			
SIZE C	THIS DRAWING CONTAINS INFORMATION THAT IS PROPRIETARY TO MOLEX INCORPORATED AND SHOULD NOT BE USED WITHOUT WRITTEN PERMISSION																																					