

**PLEASE CHECK WWW.MOLEX.COM FOR LATEST PART INFORMATION**

**Part Number:** [1050380001](#)  
**Status:** **Active**  
**Overview:** [battery connectors](#)  
**Description:** 2.00mm (.079") Pitch Battery Connector, SMT, Contact Width 7.00mm (.276"), Working Height 2.65mm (.104"), 4 Circuits, Lead-free

**Documents:**

[Drawing \(PDF\)](#) [RoHS Certificate of Compliance \(PDF\)](#)  
[Product Specification PS-105038-001 \(PDF\)](#)

**General**

Product Family	PCB Headers
Series	<a href="#">105038</a>
Application	Board-to-Board
Overview	<a href="#">battery connectors</a>
Product Name	Battery Connector, Compression Connector, One Piece

**Physical**

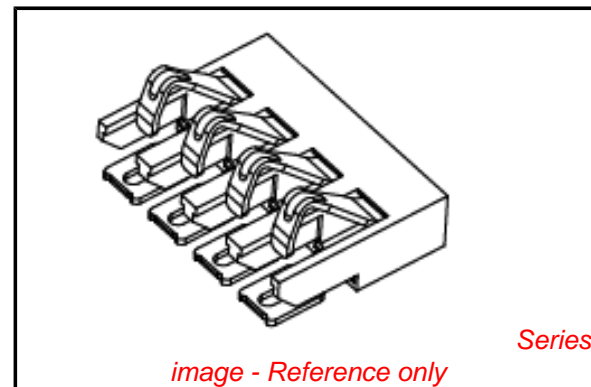
Breakaway	No
Circuits (Loaded)	4
Circuits (maximum)	4
Durability (mating cycles max)	10,000
First Mate / Last Break	No
Glow-Wire Compliant	No
Guide to Mating Part	No
Keying to Mating Part	None
Lock to Mating Part	None
Material - Plating Mating	Gold
Material - Plating Termination	Gold
Material - Resin	High Temperature Thermoplastic
Number of Rows	1
Orientation	Vertical
PCB Locator	No
PCB Retention	None
Packaging Type	Embossed Tape on Reel
Pitch - Mating Interface (in)	0.079 In
Pitch - Mating Interface (mm)	2.00 mm
Pitch - Term. Interface (in)	0.079 In
Pitch - Term. Interface (mm)	2.00 mm
Plating min: Mating (µin)	30
Plating min: Mating (µm)	0.75
Plating min: Termination (µin)	4
Plating min: Termination (µm)	0.10
Polarized to Mating Part	No
Polarized to PCB	No
Shrouded	No
Stackable	No
Temperature Range - Operating	-40°C to +85°C
Termination Interface: Style	Surface Mount

**Electrical**

Current - Maximum per Contact	1A
Voltage - Maximum	200V (RMS)

**Material Info**

**Reference - Drawing Numbers**



**EU RoHS**

**ELV and RoHS Compliant**  
**REACH SVHC**  
 Not Reviewed  
**Halogen-Free**  
**Status**  
**Not Reviewed**

**China RoHS**



**Need more information on product environmental compliance?**

Email [productcompliance@molex.com](mailto:productcompliance@molex.com)  
 For a multiple part number RoHS Certificate of Compliance, [click here](#)

Please visit the [Contact Us](#) section for any non-product compliance questions.

**Search Parts in this Series**  
[105038Series](#)

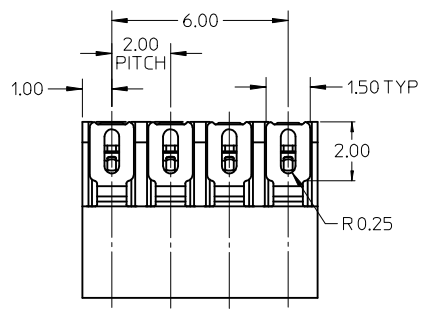
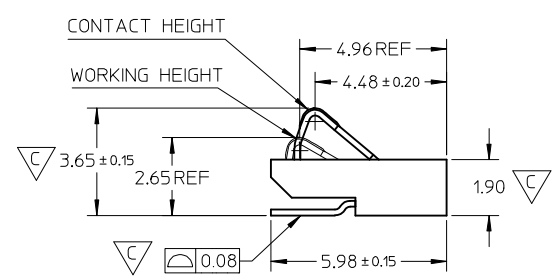
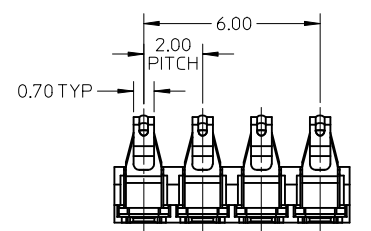
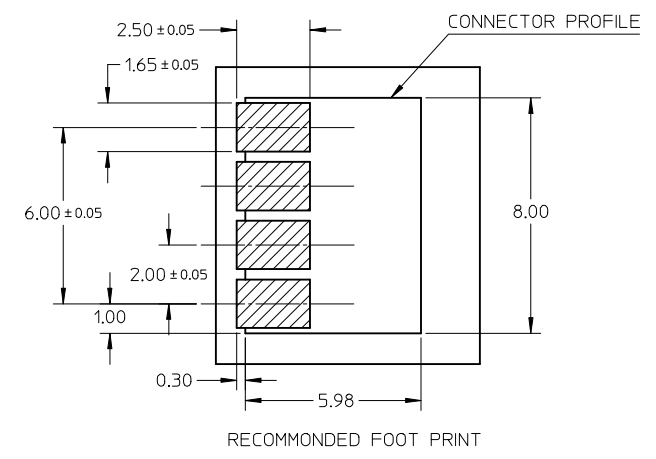
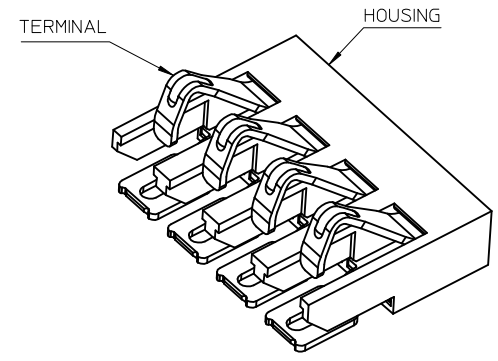
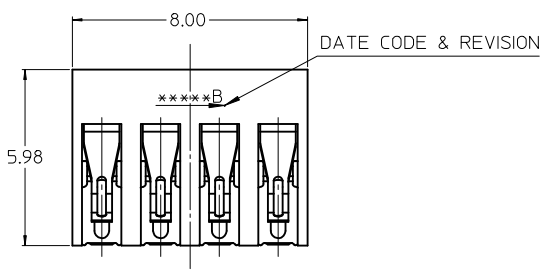
Packaging Specification  
Product Specification  
Sales Drawing  
Test Summary

PK-105038-001  
PS-105038-001  
SD-105038-001  
TS-105038-001

This document was generated on 05/26/2010

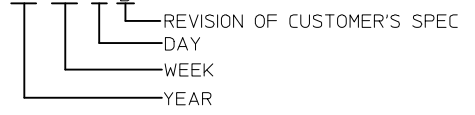
**PLEASE CHECK [WWW.MOLEX.COM](http://WWW.MOLEX.COM) FOR LATEST PART INFORMATION**

10 9 8 7 6 5 4 3 2 1



NOTE:

- MATERIAL:  
HOUSING : HIGH TEMPERATURE THERMAL PLASTIC, COLOR : BLACK  
TERMINAL : COPPER ALLOY, THICKNESS IS 0.20MM
- FINISH:  
CONTACT AREA : 0.75 MICRON GOLD MIN OVER 1.3 MICRON NICKEL MIN  
SOLDER AREA : GOLD FLASH 0.1~0.2 MICRON OVER 1.3 MICRON NICKEL MIN  
REST AREA : 1.3 MICRON NICKEL MIN
- COPLANARITY : 0.08 MAX AMONG THESE SOLDER TAILS
- NORMAL FORCE : 140+/-30 GRAMS AT 1.00MM DEFLECTION (LOADING FORCE)
- MAX DISPLACEMENT IS 1.40mm
- PRODUCT SPECIFICATION : PS-105038-001
- COMPLIANT TO RoHS DIRECTIVE 2002/95/EC AND ELV 2000/53/EC
- DATE CODE (5 DIGITS) AND DIVISION: \*\* \*\* \* B



NEW PRODUCT EC NO: DRWN: JYANG13 CHKD: APPR:	DESCRIPTION REV	QUALITY SYMBOLS	GENERAL TOLERANCES (UNLESS SPECIFIED)	SCALE 5:1	DESIGN UNITS METRIC	THIRD ANGLE PROJECTION	REVISE ON CAD ONLY	
		▽ = 0	mm INCH	DIMENSION STYLE MM ONLY		TITLE		
		▽ = 3	4 PLACES ± --- ± --- 3 PLACES ± --- ± --- 2 PLACES ± 0.13 ± --- 1 PLACE ± 0.13 ± ---	DRAWN BY JYANG13	DATE 2007/12/21	SALES DRAWING 2.0MM PITCH 4 CIRCUITS BATTERY CONNECTOR		
		ANGULAR ± 1 °	DRAFT WHERE APPLICABLE MUST REMAIN WITHIN DIMENSIONS	CHECKED BY YLZHU02	DATE 2007/12/21	MOLEX INCORPORATED		
A				APPROVED BY HWWANG	DATE 2007/12/21	MATERIAL NO. 1050380001	DOCUMENT NO. SD-105038-001	SHEET NO. 1 OF 1

8 7 6 5 4 3 2 1