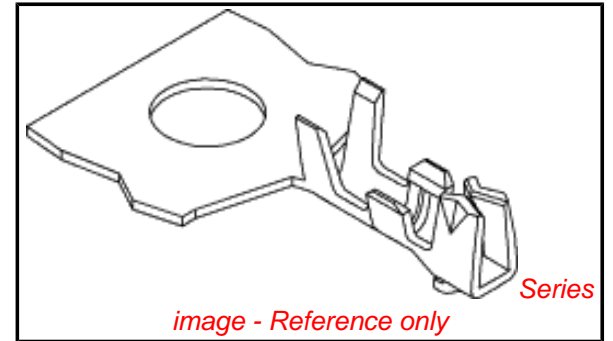


**PLEASE CHECK WWW.MOLEX.COM FOR LATEST PART INFORMATION**

**Part Number:** **0500588000**  
**Status:** **Active**  
**Overview:** picoblade  
**Description:** 1.25mm (.049") Pitch PicoBlade™ Crimp Terminal, Female, 28-32 AWG, Reel

**Documents:**

<a href="#">3D Model</a>	<a href="#">Product Specification PS-51021-022 (PDF)</a>
<a href="#">Drawing (PDF)</a>	<a href="#">Product Specification PS-51021-023 (PDF)</a>
<a href="#">Product Specification PS-51021-001 (PDF)</a>	<a href="#">Product Specification PS-51021-026 (PDF)</a>
<a href="#">Product Specification PS-51021-002 (PDF)</a>	<a href="#">Product Specification PS-51021-027 (PDF)</a>
<a href="#">Product Specification PS-51021-009 (PDF)</a>	<a href="#">Product Specification PS-51021-028 (PDF)</a>
<a href="#">Product Specification PS-51021-010 (PDF)</a>	<a href="#">RoHS Certificate of Compliance (PDF)</a>
<a href="#">Product Specification PS-51021-011 (PDF)</a>	



**General**

Product Family	Crimp Terminals
Series	<u>50058</u>
Crimp Quality Equipment	Yes
MolexKits	Yes
Overview	<u>picoblade</u>
Product Name	PicoBlade™

**Physical**

Gender	Female
Material - Metal	Phosphor Bronze
Material - Plating Mating	Tin
Material - Plating Termination	Tin
Packaging Type	Reel
Plating min: Mating (µin)	36
Plating min: Mating (µm)	0.90
Plating min: Termination (µin)	36
Plating min: Termination (µm)	0.90
Termination Interface: Style	Crimp or Compression
Wire Insulation Diameter	0.50-1.00mm (.020-.039")
Wire Size AWG	28, 30, 32
Wire Size mm²	N/A

**Material Info**

**Reference - Drawing Numbers**

Packaging Specification	SPK-50058-001
Product Specification	PS-51021-001, PS-51021-002, PS-51021-009, PS-51021-010, PS-51021-011, PS-51021-022, PS-51021-023, PS-51021-026, PS-51021-027, PS-51021-028, RPS-501576-001, RPS-51021-001, RPS-51021-002, RPS-51021-003, RPS-51021-004, RPS-51021-006, RPS-51021-007, RPS-51021-008, RPS-51021-009, RPS-51021-010, RPS-51021-011, RPS-51021-013, RPS-51021-014, RPS-51021-015, RPS-51021-016, RPS-51021-017, RPS-51021-018, RPS-51021-019, RPS-51021-020, RPS-51021-021, RPS-51021-022, RPS-51021-023, RPS-51021-024, RPS-51021-025, RPS-51021-026, RPS-51021-027, RPS-51021-028, RPS-51021-029, RPS-51021-030, RPS-51021-031, RPS-51021-032, RPS-51021-033, RPS-51021-034, RPS-51021-037, RPS-51021-038,

**EU RoHS**

**ELV and RoHS Compliant**  
**REACH SVHC Contains SVHC: No**  
**Halogen-Free Status**  
**Halogen-Free**

**China RoHS**



**Need more information on product environmental compliance?**

Email [productcompliance@molex.com](mailto:productcompliance@molex.com)  
 For a multiple part number RoHS Certificate of Compliance, [click here](#)

Please visit the [Contact Us](#) section for any non-product compliance questions.

**Search Parts in this Series**  
50058Series

**Mates With**  
50125 Crimp Terminal 26-28 AWG, 50133 Crimp Terminal 28-32 AWG

**Use With**  
51021 Housing

**Application Tooling | FAQ**

*Tooling specifications and manuals are found by selecting the products below. Crimp Height Specifications are then contained in the Application Tooling Specification document.*

**Global**

Description	Product #
Hand Crimp Tool for 1.25mm (.049") Pitch PicoBlade™ Crimp Terminals, 26-32 AWG	<u>0638190300</u>
Hand Crimp Tool for 1.25mm (.049") Pitch	<u>0638190400</u>

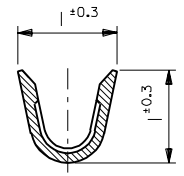
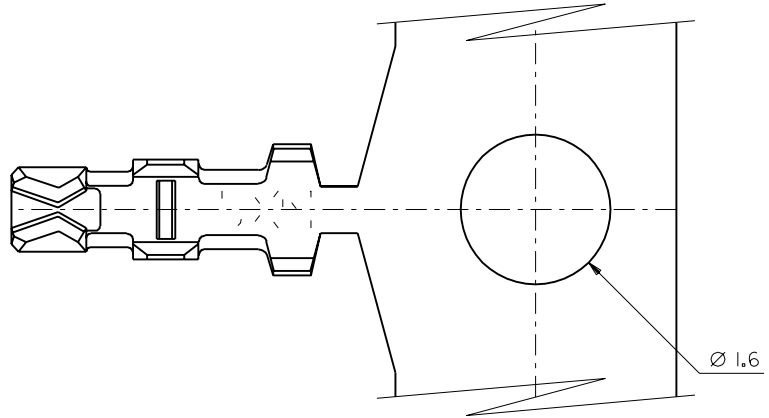
Sales Drawing

RPS-51021-039, RPS-51021-040, RPS-51021-041,  
RPS-51021-042, RPS-51021-043, RPS-51021-044,  
RPS-51021-045, RPS-51021-046, RPS-51021-047,  
RPS-51021-048, RPS-51021-050, RPS-51021-051,  
RPS-51021-052, RPS-51021-053, RPS-51021-054,  
RPS-51021-055, RPS-51021-056, RPS-51021-057,  
RPS-51021-058, RPS-51021-059, RPS-51021-060,  
RPS-51021-061, RPS-51021-062, RPS-51021-063,  
RPS-51021-064, RPS-51021-065, RPS-51021-066,  
RPS-51021-067, RPS-51021-068, RPS-51021-071,  
RPS-51021-072, RPS-51021-073, RPS-51021-074,  
RPS-51021-076, RPS-51021-077, RPS-51021-078,  
RPS-51021-079, RPS-51021-083, RPS-51021-084,  
RPS-51021-085, RPS-51021-086, RPS-51021-089,  
RPS-51021-091, RPS-51021-092, RPS-51021-096,  
RPS-51021-097, RPS-51021-101, RPS-53398-002,  
RPS-53398-037, RPS-53398-038  
SD-50058-8\*00

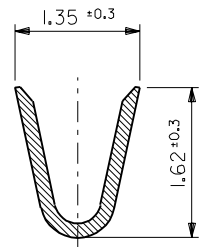
PicoBlade™ Crimp Terminals, 26-32 AWG	
T2 Terminator	<u>0639103700</u>
Tooling Die	
FineAdjust™	<u>0639003700</u>
1.25mm (.049") Pitch Crim Terminal, 28-32 AWG	
Extraction Tool	<u>0011030043</u>
Hand Crimp Tool for Series 50058 and 50079 Terminals on Metal Strip	<u>0638110000</u>
<b>Japan</b>	
<b>Description</b>	<b>Product #</b>
Applicator for M21 1A Bench Press, 26-32 AWG, for 50058 and 50079 Crimp Terminal	<u>0570673000</u>
Side-Feed Applicator For Full-Auto Machine	<u>0570673200</u>
Extraction Tool	<u>0570726000</u>

This document was generated on 06/07/2010

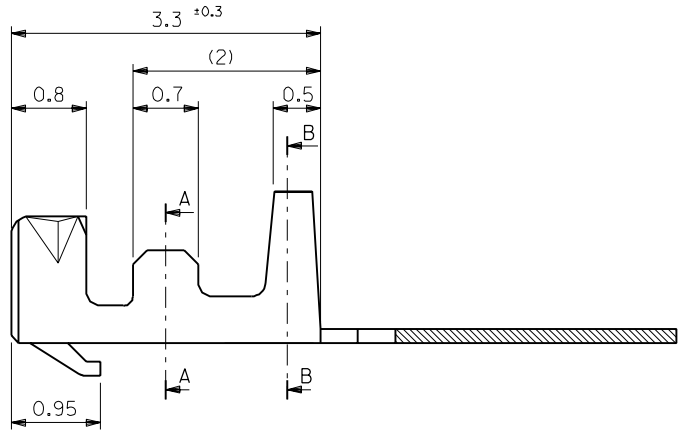
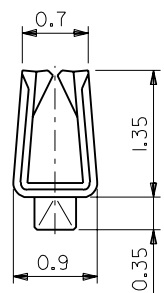
**PLEASE CHECK [WWW.MOLEX.COM](http://WWW.MOLEX.COM) FOR LATEST PART INFORMATION**



SECT. A-A



SECT. B-B



50058-8100	バラ状 LOOSE
50058-8000	連鎖状 CHAIN
ENG. NO.	端子形状 FORM

注記  
NOTES

- 適合ハウジング：51021シリーズ  
APPLICABLE HOUSING：51021 SERIES
- メッキ仕様 PLATING  
錫 0.9μm MIN. リフロー処理（前メッキ）  
TIN 0.9μm MIN. REFLOW TREATMENT (PRE-PLATED)

材料 MATERIAL リン青銅 PHOSPHOR BRONZE (t=0.15)		仕上げ FINISH —H—	
適用電線範囲 WIRE RANGE AWG #28-32		被覆外径 INS. RANGE Ø 0.5-1.0	
DRAWN BY '92/10/21 H.HIRAMOTO		CHK'D BY '93/9/6 M.FUKUSHIMA	
APP'D BY '93/9/6 M.FUKUSHIMA		尺度 SCALE 20 - 1	
DR. / CHK.	日付 DATE	変更内容 REVISION RECORD	記号 LTR
DR. / CHK.	日付 DATE	変更内容 REVISION RECORD	記号 LTR

角度 ANGLE	±3°
30以上 OVER	+0.3
10以上 30未満 OVER UNDER	+0.25
10未満 UNDER	+0.2
一般公差 GENERAL TOLERANCES	

molex MOLEX-JAPAN CO.,LTD. 日本モレックス株式会社	
REVISE ONLY ON CAD SYSTEM	
TITLE 名称 1.25 WIRE TO BOARD CONN. CRIMP REC. TERMINAL	
DWG. NO.	REV
SD-50058-8*00	D