

PLEASE CHECK WWW.MOLEX.COM FOR LATEST PART INFORMATION

Part Number: [0354539802](#)
Status: **Active**
Description: 6.35mm (.250") Tab Heavy Tab Terminal, Type B, 16-18 AWG (1.31-0.80mm²), Pre-Tin Plated

Documents:

[Drawing \(PDF\)](#) [Product Specification PS-35546-002 \(PDF\)](#)
[Product Specification PS-35546-001 \(PDF\)](#) [RoHS Certificate of Compliance \(PDF\)](#)

General

Product Family Quick Disconnects
 Series [35453](#)
 Crimp Quality Equipment Yes
 Product Name N/A
 Type Quick Disconnect

Physical

Barrel Type Open
 Gender Male
 Glow-Wire Compliant No
 Insulation None
 Lock to Mating Part None
 Material - Metal Brass
 Orientation Straight
 Packaging Type Reel
 Polarized to Mating Part Yes
 Tab Thickness 0.81mm (.032")
 Tab Width 6.35mm (.250")
 Temperature Range - Operating -40°C to +120°C
 Wire Size AWG 16, 18
 Wire Size mm² 0.80 - 1.31

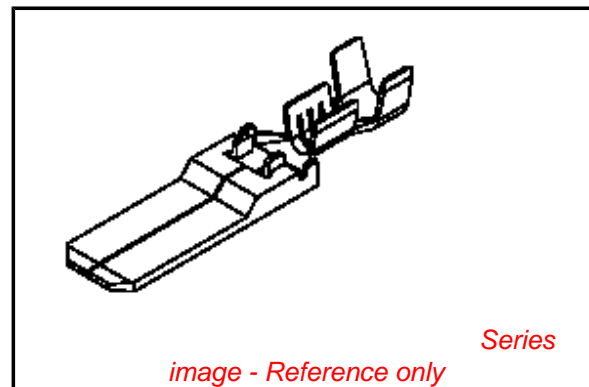
Electrical

Voltage - Maximum 250V

Material Info

Reference - Drawing Numbers

Product Specification PS-35546-001, PS-35546-002
 Sales Drawing SD-35452-001



EU RoHS

ELV and RoHS Compliant
REACH SVHC
Contains SVHC: No
Halogen-Free Status

China RoHS



Halogen-Free

Need more information on product environmental compliance?

Email productcompliance@molex.com
 For a multiple part number RoHS Certificate of Compliance, [click here](#)

Please visit the [Contact Us](#) section for any non-product compliance questions.

Search Parts in this Series

[35453Series](#)

Use With

[35546](#) , [35547](#)

Application Tooling | FAQ

Tooling specifications and manuals are found by selecting the products below. Crimp Height Specifications are then contained in the Application Tooling Specification document.

Global

Description	Product #
Extraction Tool for 6.35mm (.250") Heavy Tab Terminals, 12-14 AWG	0638133100
T2 Terminator Die FineAdjust™ Applicator	0638576000 0638676000

Hand Crimp Tool 0638192700
for 6.35mm (.250")
Heavy Tab Terminals

This document was generated on 04/14/2010

PLEASE CHECK WWW.MOLEX.COM FOR LATEST PART INFORMATION

DO NOT SCALE DRAWING
DIMENSION IN METRIC

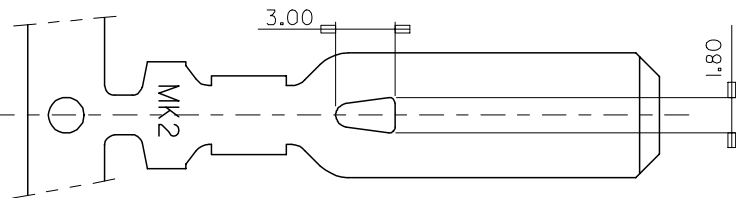
c

PROJECT NO.

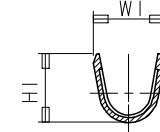
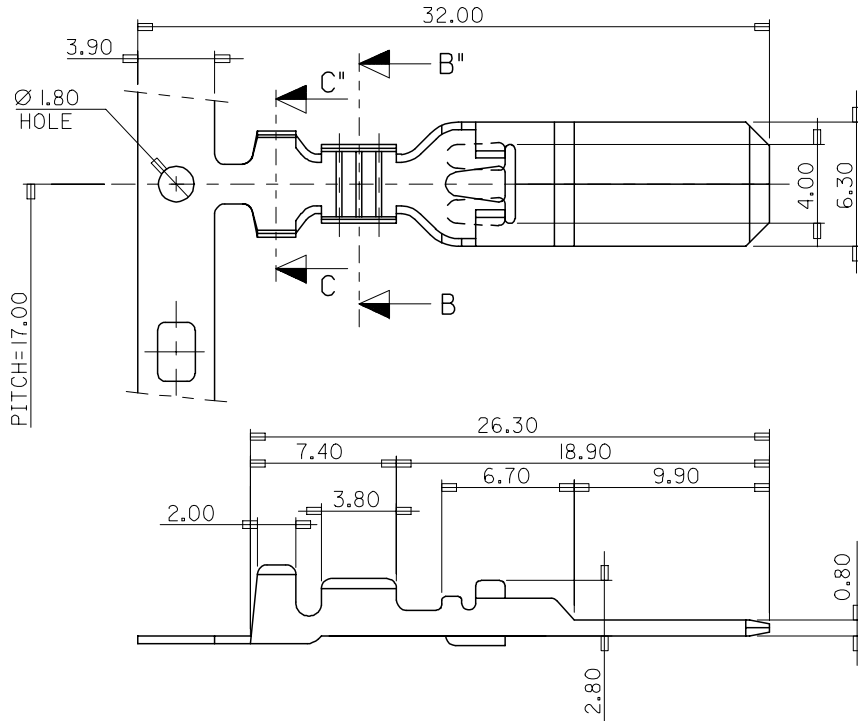
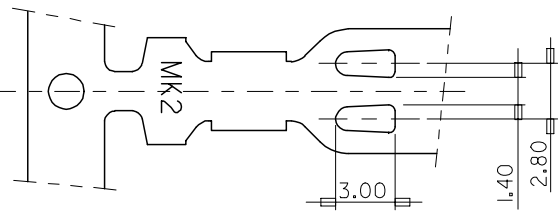
SIMILAR ITEM

DWG. NO.
SD-35452-001

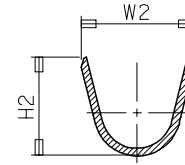
"A" TYPE
35452-9*02



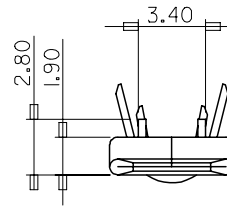
"B" TYPE
35453-9*02



SECTION B-B'



SECTION C-C'



NOTES

1. MATERIAL: BRASS
2. FINISHES: PRE-TIN PLATED

ENG.NO	MATERIAL NO.	W1	H1	W2	H2
3545*-9702	3545*9702	2.8	2.8	3.8	3.8
3545*-9802	3545*9802	3.5	3.5	5.6	5.2
3545*-9902	3545*9902	5.0	4.8	6.3	6.3

* : 2 AND 3

REVISED	DESCRIPTION
EC NO. KOR2002-0099	
DRWN: C.B.CHIN 02/04/08	
CHK: W.Y.YANG	
APPR: C.W.LEE	
A	REV

QUALITY SYMBOLS	
MAJOR	= 0
CRITICAL	= 0

GENERAL TOLERANCES: (UNLESS SPECIFIED)	
	mm INCH
4 PLACES	±0. ±
3 PLACES	±0. ±
2 PLACES	±0.30 ±
1 PLACE	±0.30 ±
ANGULAR: ± 1.0 °	
DRAFT WHERE APPLICABLE MUST REMAIN WITHIN DIMENSIONS	

SCALE 4:1	DESIGN UNITS <input checked="" type="checkbox"/> mm <input type="checkbox"/> INCH
DRAWN BY & DATE W.Y.YANG 97/11/04	
CHECKED BY & DATE B.K.CHOI 97/11/04	
APPROVED BY & DATE C.W.LEE 97/11/04	
CAD FILENAME S35452AA.DGN	

DIMENSIONS: <input type="checkbox"/> mm <input type="checkbox"/> INCH <input type="checkbox"/> mm <input checked="" type="checkbox"/> MM		SHT	REV
THIRD ANGLE PROJECTION		REVISE ON CAD ONLY	
TITLE: .250 HEAVY TAB-(A),(B)			
MOLEX MOLEX INCORPORATED			
MATERIAL NO. SEE TABLE	DRAWING NO. SD-35452-001	SHEET NO. 1/1	
THIS DRAWING CONTAINS INFORMATION THAT IS PROPRIETARY TO MOLEX INCORPORATED AND SHOULD NOT BE USED WITHOUT WRITTEN PERMISSION.			SIZE B

MX-A3