

**PLEASE CHECK WWW.MOLEX.COM FOR LATEST PART INFORMATION**

**Part Number:** [0354779002](#)  
**Status:** **Active**  
**Overview:** [bulb sockets](#)  
**Description:** Wedge Terminal 14.50mm (0.57") Pitch

**Documents:**

[Drawing \(PDF\)](#) [RoHS Certificate of Compliance \(PDF\)](#)  
[Product Specification PS-68147-001 \(PDF\)](#)

**General**

Product Family	Crimp Terminals
Series	<a href="#">35477</a>
Crimp Quality Equipment	Yes
Overview	<a href="#">bulb sockets</a>
Product Name	Bulb Socket

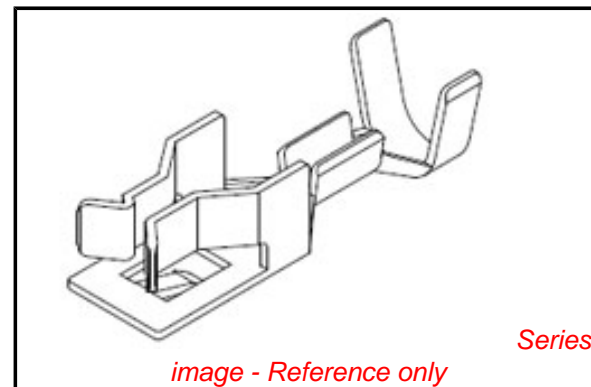
**Physical**

Gender	Female
Material - Metal	Brass
Material - Plating Mating	Tin
Packaging Type	Reel
Wire Insulation Diameter	N/A
Wire Size AWG	N/A
Wire Size mm <sup>2</sup>	0.5-0.85

**Material Info**

**Reference - Drawing Numbers**

Product Specification	PS-68147-001
Sales Drawing	SD-35477-001



**EU RoHS**

**ELV and RoHS  
Compliant**  
**REACH SVHC  
Contains SVHC: No**  
**Halogen-Free  
Status**

**China RoHS**



**Need more information on product  
environmental compliance?**

Email [productcompliance@molex.com](mailto:productcompliance@molex.com)  
 For a multiple part number RoHS Certificate of Compliance, [click here](#)

Please visit the [Contact Us](#) section for any non-product compliance questions.

**Search Parts in this Series**

[35477Series](#)

**Application Tooling | [FAQ](#)**

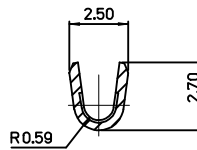
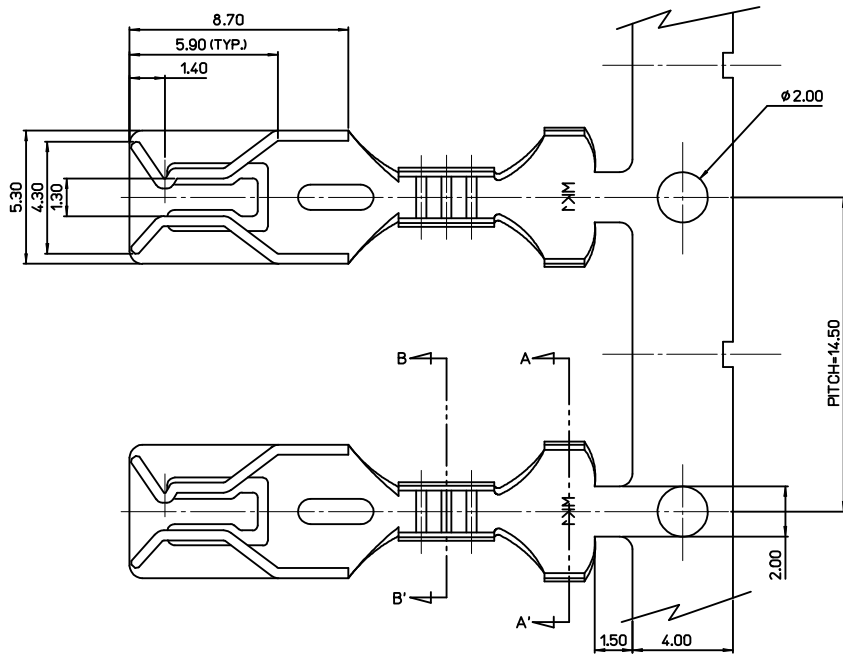
*Tooling specifications and manuals are found by selecting the products below. Crimp Height Specifications are then contained in the Application Tooling Specification document.*

**Global**

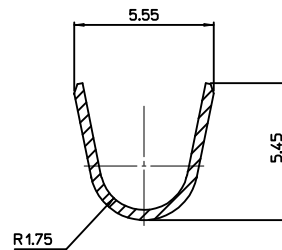
Description	Product #
T2 Terminator Die	<a href="#">0638569000</a>
Extraction Tool	<a href="#">0638132700</a>
Hand Crimp Tool for Bulb Socket Wedge Terminal for 0.50 to 0.85mm <sup>2</sup> wire used with Wire Seal	<a href="#">0638195300</a>
FineAdjust™ Applicator for 14.50mm (0.57") Pitche Wedge Terminal, 0.50, 0.75 metric and 20 AWG	<a href="#">0639011100</a>

This document was generated on 06/01/2010

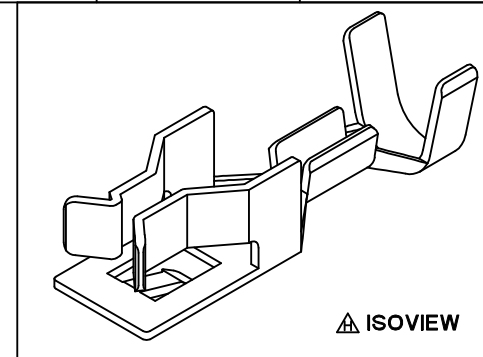
**PLEASE CHECK [WWW.MOLEX.COM](http://WWW.MOLEX.COM) FOR LATEST PART INFORMATION**



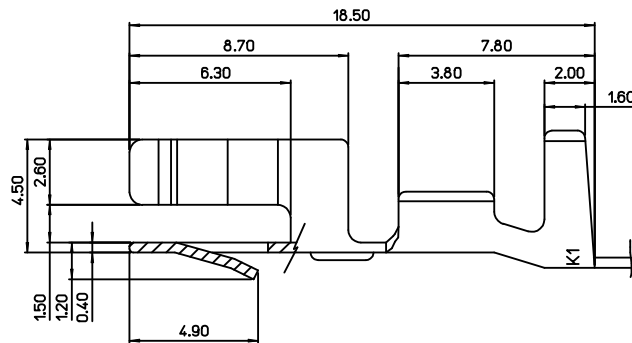
SECTION B-B'



SECTION A-A'



ISOVIEW

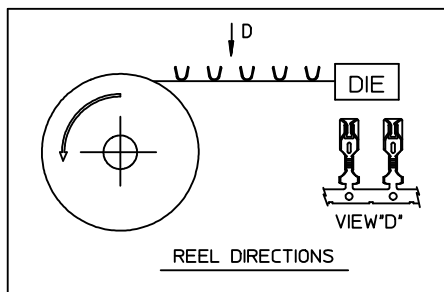


**NOTES**

- 1.MATERIAL : BRASS(C26000)
- 2.FINISH : PRE-TIN PLATING
- 3.APPLICABLE HOUSING SOCKET : 68147,49505
- 4.APPLICABLE WIRE SEAL : 49505-9001
- 5.WEDGE BULB INSERTION FORCE : 3.5 Kgf MAX.  
WEDGE BULB RETENSION FORCE : 0.5 Kgf MIN.
- 6.APPLICABLE WEDGE BASE CAP : W2.1X9.5d(W5W,W16W)
- 7.APPLICABLE WIRE SIZE : 0.5~0.85mm<sup>2</sup>

<TABLE 1>

354779002	35477-9002
MATERIAL NO.	ORDER NO.



REVISED  
 EC NO: KOR2010-0021  
 DRWINEOK IM 2009/08/07  
 CHKD:BCYOON 2009/08/07  
 APPR:YUNS IKK IM 2009/08/07

QUALITY SYMBOLS	DESCRIPTION
▽=0	
◻=0	

GENERAL TOLERANCES (UNLESS SPECIFIED)		DIMENSION STYLE		SCALE	DESIGN UNITS	THIRD ANGLE PROJECTION
		MM ONLY		5:1	METRIC	
	mm	INCH	DRAWN BY	DATE	TITLE	
4 PLACES	± ---	± ---	SMKIM	2005/08/09	WEDGE TERMINAL	
3 PLACES	± ---	± ---	CHECKED BY	DATE		
2 PLACES	± 0.2	± ---	BCYOON	2005/08/09		
1 PLACE	± ---	± ---	APPROVED BY	DATE		
	ANGULAR ± 1 °		CWLEE	2005/08/09		
DRAFT WHERE APPLICABLE MUST REMAIN WITHIN DIMENSIONS			MATERIAL NO.	DOCUMENT NO.	SHEET NO.	
			SEE TABLE 1	SD-35477-001	1 OF 1	

DRAWN BY		DATE	TITLE
SMKIM		2005/08/09	
CHECKED BY		DATE	MATERIAL NO.
BCYOON		2005/08/09	
APPROVED BY		DATE	DOCUMENT NO.
CWLEE		2005/08/09	
MATERIAL NO.		DOCUMENT NO.	
SEE TABLE 1		SD-35477-001	

DESIGN UNITS		THIRD ANGLE PROJECTION
METRIC		
MATERIAL NO. 354779002		
ORDER NO. 35477-9002		
TITLE WEDGE TERMINAL		
DRAWN BY SMKIM		
DATE 2005/08/09		
CHECKED BY BCYOON		
DATE 2005/08/09		
APPROVED BY CWLEE		
DATE 2005/08/09		
MATERIAL NO. SEE TABLE 1		
DOCUMENT NO. SD-35477-001		
SHEET NO. 1 OF 1		