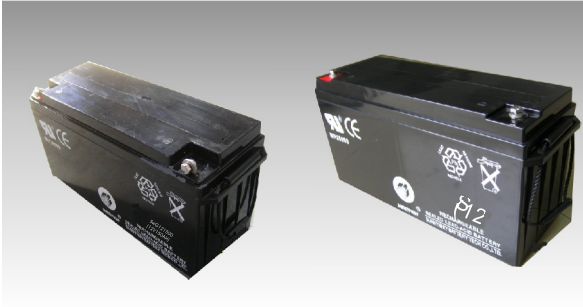




SWG121500(12V150AH)



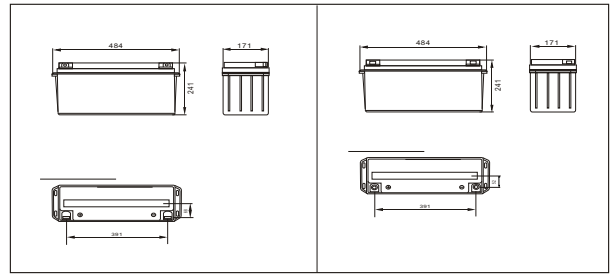
Specifications

Nominal Voltage		12V
Rated capacity (20hour rate)		150 Ah
Dimensions	Total Height	241 mm (9.49inches)
	Height	241 mm (9.49inches)
	Length	484 mm (19.1 inches)
	Width	171 mm (6.73 inches)
Weight Approx		49 Kg (108lbs)

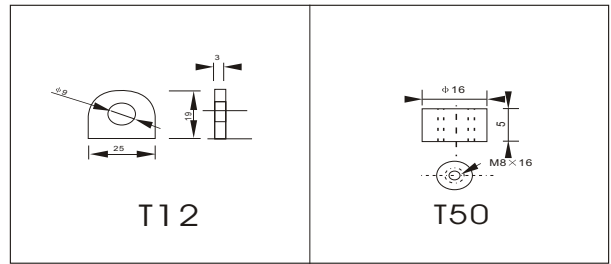
Characteristics

Capacity 25°C(77°F)	20 hour rate(7.50 A) 10 hour rate(13.8 A) 5 hour rate(22.0 A) 1 hour rate(82.8 A)	150 AH 138 AH 110AH 82.8 AH
Internal Resistance	Full charged Battery at 25°C(77°F)	Approx 7.5 mΩ
Capacity affected by Temperature (10hour rate)	40°C(104°F) 25°C(77°F) 0°C(32°F) -15°C(5°F)	102% 100% 85% 65%
Self-Discharge at 25°C(77°F)	Capacity after 3 month storage Capacity after 6 month storage Capacity after 12 month storage	91% 82% 64%
Terminal	T12、T50	
Charge (constant Voltage)	Cycle	Initial Charging Current less than 55 A Voltage 14.10-14.40V
	Float	Voltage 13.50-13.80V

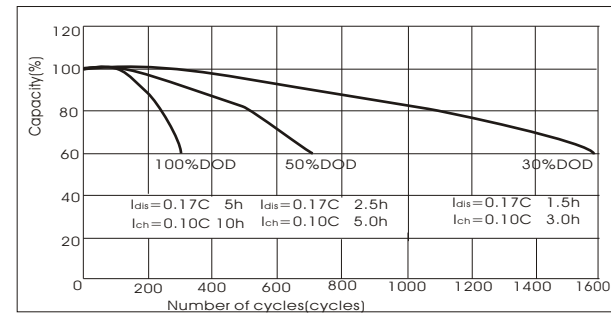
Outer dimensions (mm)



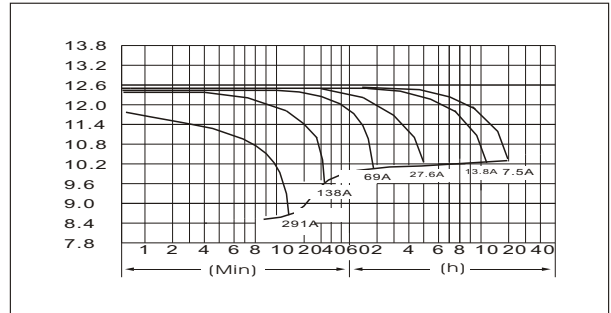
Terminal Type (mm)



Curves of cycle life(25°C)



Discharge Curves 25°C(77°F)



Constant Current(Amp) and Constant Power(Watt) Discharge Table at 25°C(77°F)

Time		5min	10min	15min	30min	1h	2h	3h	4h	5h	8h	10h	20h
960V	A	442	291	235	157	83	48	35.5	27.6	22.8	16.1	14.5	7.8
	W	4562	3110	2517	1692	894	530	394.7	310.5	258.9	185.0	167.4	91.0
1020V	A	428	263	221	150	78	46	34.5	26.9	22.4	15.7	14.2	7.6
	W	4572	2934	2474	1689	880	531	399.5	312.9	260.6	184.1	167.0	89.0
1050V	A	414	235	193	141	75	45	33.7	26.5	22.1	15.6	13.9	7.6
	W	4522	2674	2206	1620	873	522	392.3	310.0	258.9	183.4	164.9	89.7
1080V	A	399	221	180	130	73	44	32.8	26.1	21.5	15.2	13.8	7.5
	W	4478	2554	2070	1503	848	514	387.2	308.0	254.5	179.9	164.0	88.8
1110V	A	386	208	166	116	70	43	31.7	25.4	21.0	14.8	13.1	7.0
	W	4374	2403	1931	1356	828	506	377.1	302.4	250.3	176.8	158.3	85.3