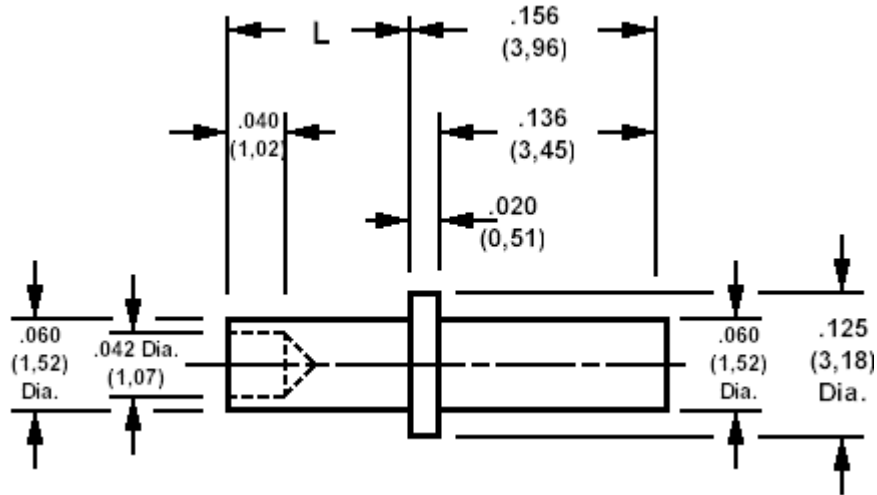


180-2750, Solder terminal, pin type

Recommended mounting hole .064 (1,61), #52 drill



How to order code

180-2750-XX-05-00

Basic Part No XX = L dimension

DIMENSIONS (XX)			
Basic Part No	(XX)	L	Board Thickness
1802750	-01	.063 (1,60)	.031 (0,79)
	-02	.094 (2,39)	.062 (1,59)
	-03	.125 (3,18)	.094 (2,39)
	-04	.156 (3,96)	.125 (3,18)

MATERIALS		
Component	Material	Finish
		-05
Terminal	Brass	Electro Solder

SWAGE TOOLING	
Recommended Swaging Tools:-	
Anvil	435-6430-01-00-00
Flare Punch	435-6657-01-00-00