

**PLEASE CHECK WWW.MOLEX.COM FOR LATEST PART INFORMATION**

**Part Number:** **0510151200**  
**Status:** **Active**  
**Description:** 2.00mm (.079") Pitch Board-In Crimp Housing, Low Profile, 12 Circuits

**Documents:**

<a href="#">3D Model</a>	<a href="#">Product Specification PS-51015-002 (PDF)</a>
<a href="#">Drawing (PDF)</a>	<a href="#">RoHS Certificate of Compliance (PDF)</a>
<a href="#">Product Specification PS-51015-001 (PDF)</a>	

**Agency Certification**

UL	E29179
----	--------

**General**

Product Family	Crimp Housings
Series	<a href="#">51015</a>
Product Name	Board-In

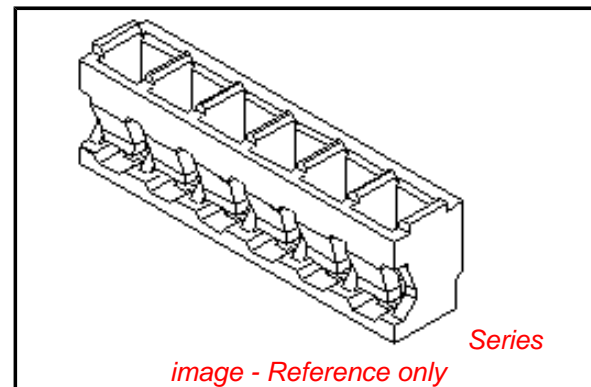
**Physical**

Circuits (maximum)	12
Color - Resin	Natural
Flammability	94V-0
Gender	Male
Glow-Wire Compliant	No
Material - Resin	Nylon
Number of Rows	1
Packaging Type	Bag
Panel Mount	No
Pitch - Mating Interface (in)	0.079 In
Pitch - Mating Interface (mm)	2.00 mm
Stackable	No
Temperature Range - Operating	-40°C to +105°C

**Material Info**

**Reference - Drawing Numbers**

Product Specification	PS-51015-001, PS-51015-002, RPS-51015-001, RPS-51015-003, RPS-51015-004, RPS-51015-006
Sales Drawing	SD-51015-**00



**EU RoHS**

**ELV and RoHS Compliant**  
**REACH SVHC**  
**Contains SVHC: No**  
**Halogen-Free**  
**Status**

**China RoHS**



**Not Reviewed**

**Need more information on product environmental compliance?**

Email [productcompliance@molex.com](mailto:productcompliance@molex.com)  
 For a multiple part number RoHS Certificate of Compliance, [click here](#)

Please visit the [Contact Us](#) section for any non-product compliance questions.

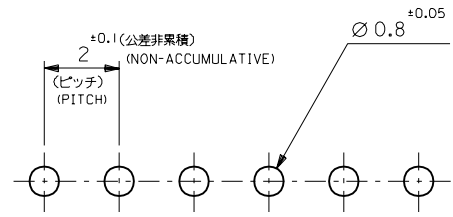
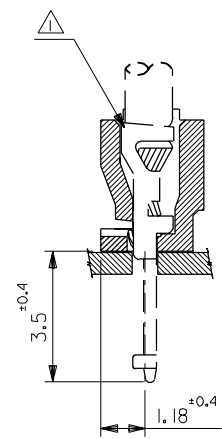
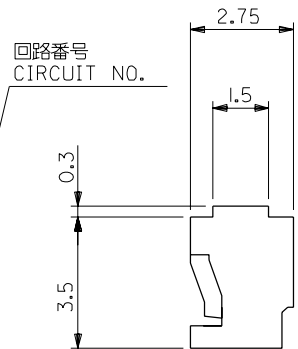
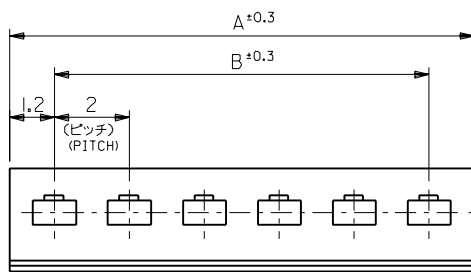
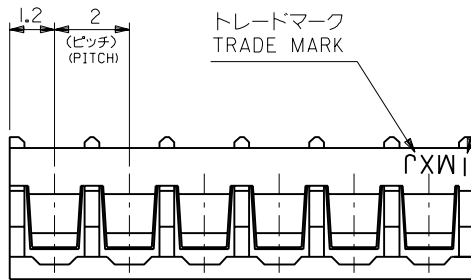
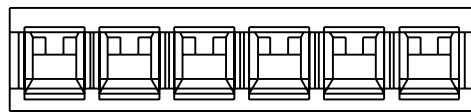
**Search Parts in this Series**

[51015Series](#)

**Use With**

[50034](#)

**PLEASE CHECK WWW.MOLEX.COM FOR LATEST PART INFORMATION**



基板取付穴推奨寸法

(基板厚: t=1~1.6mm)  
 RECOMMENDED PC BOARD  
 HOLE DIMENSION  
 (THICKNESS: t=1~1.6mm)

注記  
 NOTE

△ 適合ターミナル: 50034-8\*00  
 APPLICABLE TERMINAL: 50034-8\*00

28	30.4	51015-1500	15
26	28.4	-1400	14
24	26.4	-1300	13
22	24.4	-1200	12
20	22.4	-1100	11
18	20.4	-1000	10
16	18.4	-0900	9
14	16.4	-0800	8
12	14.4	-0700	7
10	12.4	-0600	6
8	10.4	-0500	5
6	8.4	-0400	4
4	6.4	-0300	3
2	4.4	51015-0200	2
B	A	ENG.NO.	種数 NO. OF CKT

材料 MATERIAL ナイロン66, UL94V-0 NYLON66, UL94V-0		再作図 REDRAWN LUC703101		DRAWN BY '96/05/28 H.I.IJIMA		CHK'D BY '96/05/28 M.FUKUSHIMA	
仕上げ FINISH ---		変更内容 REVISION RECORD		APP'D BY '96/05/28 M.ENOMOTO		尺度 SCALE 8 : 1	
適用電線範囲 WIRE RANGE ---		DR. / CHK. / DATE		M.F.			
被覆外径 INS. RANGE ---		DR. / CHK. / DATE		M.F.			
角度 ANGLE ±3°		記号 LTR		DR. / CHK. / DATE			
30以上 OVER ±0.3		B					
10以上 30未満 UNDER ±0.25							
10未満 UNDER ±0.2							
一般公差 GENERAL TOLERANCES							

**molex** MOLEX-JAPAN CO.,LTD.  
 日本モレックス株式会社

REVISE ONLY ON CAD SYSTEM

TITLE 名称  
 2.0 BOARD  
 IN CONN. HSG.

DWG. NO. SD-51015-\*\*-00

REV B