

PLEASE CHECK WWW.MOLEX.COM FOR LATEST PART INFORMATION

Part Number: [1120230007](#)
Status: **Active**
Description: Direct-Link PC104-CANIO CANopen Master PC/104 card

Documents:

[Drawing \(PDF\)](#) [RoHS Certificate of Compliance \(PDF\)](#)

General

Product Family	Network Interface
Series	112023
Approvals	N/A
Communication Speed	125, 250, 500 Kbaud
Mounting Style	Desktop, Screws
Product Name	DRL
Protocol	CANopen*
Type	CANopen* Card

Physical

Channels	1
Interface	PC/104
Network Connection Type	HE13 (2 by 5 pins)
Packaging Type	Carton
Processor	N/A
Temperature Range - Operating	-40°C to +85°C

Electrical

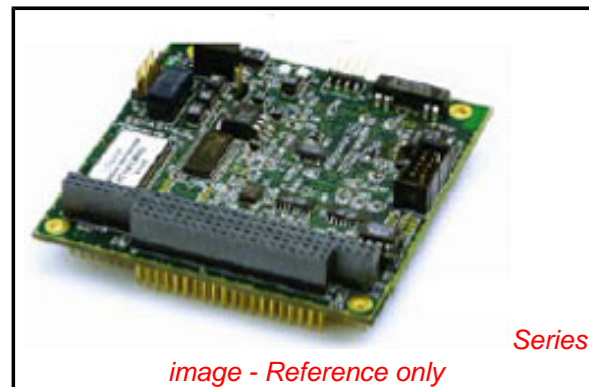
EMC	N/A
Supply Voltage	5V Bus

Material Info

Old Part Number	DRL-CNO-104
-----------------	-------------

Reference - Drawing Numbers

Sales Drawing	E-112023-0007
---------------	---------------



EU RoHS

**ELV and RoHS
Compliant**
**REACH SVHC
Not Reviewed**
**Halogen-Free
Status**

China RoHS



**Need more information on product
environmental compliance?**

Email productcompliance@molex.com
 For a multiple part number RoHS Certificate of
 Compliance, [click here](#)

Please visit the [Contact Us](#) section for any
 non-product compliance questions.

Search Parts in this Series
[112023Series](#)



BradCommunications™ Direct-Link™ CANopen network interface cards allow deterministic I/O data acquisition for PC-based control applications.

Direct-Link™ CANopen

Data acquisition for real time

Features

- Automatic devices detection on the network
- Connect PC-Based Control applications directly to I/O devices
- Protocol: CANopen Master/Scanner
- 1 Serial or Ethernet port for remote configuration and diagnostic
- Embedded Communication on the card for powerful data throughput
- Automatic I/O mapping for easy configuration

OS supported

Standard package

- Windows 32-bit (XP SP1/ 2000 SP4 / NT SP6, 2003 Server), Ardence RTX

Free Download

- Windows XP Embedded, QNX, VxWorks, Linux, Phar Lap ETS, DOS

CANopen



RoHS



PCI-Universal



PC/104

Overview

BradCommunications™ Direct-Link™ is a low range of automation components for industrial communication. It includes a variety of products such as diagnostic tools, intelligent connectors, tunneling gateways, fieldbuses network interface cards, and software drivers for industrial networks.

Simple as they are affordable, BradCommunications™ Direct-Link™ products allow you to acquire the equipment to develop your architectures and industrial applications at a lower cost.

Direct-Link™ products are characterized by their simple use and fast implementation; they are modular and scalable. Moreover, they are designed to be easily embedded into computerized systems and are available in a wide selection of form factors.

Powerful Network Interface card

Particularly, the **BradCommunications™ Direct-Link™ CANopen** interface cards are equipped with 1 CANopen port handling CANopen protocol in **Master mode** up to 1Mbps.

A smart A.D.M (Automatic Dual port ram Mapping) mechanism avoids the I/O tags configuration in the Dual Port RAM of the card. More than a simple I/O acquisition card, the Direct-Link™ PCU-CANIO/PC104-CANIO interfaces provide the applications with additional information such as: *device status and diagnostics, process data read/write monitoring, communication tools for troubleshooting, hardware and software Watchdog, etc..*

The communication layers are completely embedded on the cards, allowing easy and fast communication with field devices resulting in remarkable application performance.

Product package includes:

- Graphical console for configuration and diagnostic tools
- Data servers (Multi-protocol OPC DA 3.0 & 2.05, ActiveX, DAServer, FastDDE/SuiteLink)
- I/O libraries for Windows (DLL) and Ardence's hard real time extensions (RTX)
- Static library for non-windows OS
- Drivers for soft-logic packages ▲

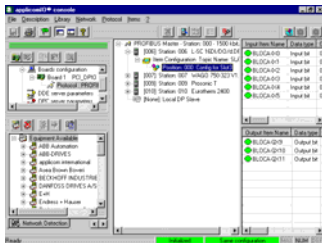
BradCommunications™

Direct-Link™ CANopen

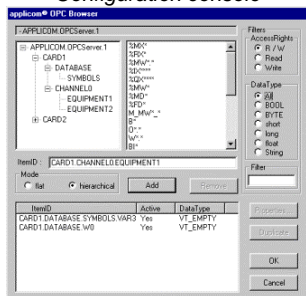


Software tools

Direct-Link™ Interface cards provide effective software tools enabling fast integration of industrial communication into your applications. The console is common to all fieldbuses of Woodhead offer as Profibus-DP, EtherNet/IP, Modbus/TCP and DeviceNet.



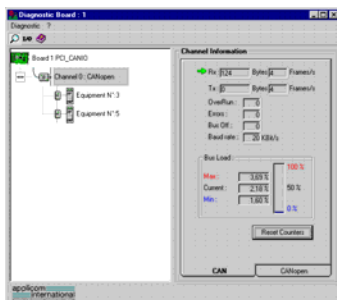
- Configuration console -



- OPC Browser -



- ActiveX implementation -



- Diagnostic and test tools -

Hardware specifications

	PCU-CANIO	PC104-CANIO
Bus interface	PCI Universal 3.3/5V, PCI-X compatible	PC/104 bus
Processor	AMD SC520	
Memory	8 Mbytes SDRAM	
Interruption	Hardware Plug&Play	2, 3, 4, 5, 6, 7, 10, 11, 12, 14, 15
DPRAM Address	Hardware Plug&Play (8 Kbytes used per card)	From C8000 to DE000 (8 Kbytes used per card)
Dimensions (L x W)	168mm x 107mm (6.61" x 4.21")	95mm x 90mm (3.74" x 3.54")
Consumption	6W (max. 1.2A)	5W (max. 0.8A)
Operating Temperature	0°C (32°F) up to +65° C (149°F)	0°C (32°F) up to +65° C (149°F)
Storage Temperature	-40°C (-40°F) up to +80°C (176°F)	-40°C (-40° F) up to +85°C (185° F)
Discrete Input	Opto-coupled discrete input Voltage -> DC +10 to +30 or AC 24 V (50 to 60 Hz)	
Discrete Output	"WatchDog" output contact free from potential (floating) (24V DC, 0.25 A)	
EMC Compliance	EN55022 Class B, EN61000-6-2, EN61000-3-2, EN61000-3-3	
RoHS Compliance	Yes	

1 CANopen port

Connector type	CANopen Standard, 9-pin Sub-D male (gender changer Sub-D Male/ Male supplied)	HE13 (2 x 5 pins)
CAN Controller	Phillips SJA 1000	
CAN Transceiver	Phillips 82C251	
Speed	1, 10, 20, 50, 100, 125, 250, 500, 800, 1000 Kbps	
LED indicators	1 Status LED / 1 transmission LED	

Port for remote configuration and diagnostic

Port Type	Ethernet port	Asynchronous Serial port
Connector type	BaseT - RJ45	HE13 (2 x 5 pins)
LED indicators	4 LEDs - TX/RX/Link/100 Mbps	-
Electrical interface	Ethernet IEEE 802.3	RS232
Speed	10/100 Mbps (auto-negotiation)	50 to 38400 bps

Protocol Specifications

CANopen	
	<ul style="list-style-type: none"> Specifications CIA DS 301 v4.0, DS302 v4.02 Supported profiles: DSP 401, DSP 402, DSP 403, DSP 404, DSP 406 Connect up to 127 Slave stations Send/Rec of PDO's (3500) and TPDO/RPDO (256/256) PDO modes: Event driven, Sync Cyclic, Sync Acyclic, Async Dynamic PDO mapping Integrated data consistency Direct access to variable types (bit, byte, word, double word) EDS Library

Ordering Information

Part Number	Product Description
DRL-CNO-PCU	BradCommunications™ Direct-Link™ PCU-CANIO CANopen card , PCI-Universal bus, 3.3/5V
DRL-CNO-104	BradCommunications™ Direct-Link™ PC104-CANIO CANopen card, PC/104 bus

To contact us: www.woodhead.com

Reference Number: DW200590 Date Published: October 2007

BradCommunications™

North America: US: + 1 800 225 7724 – Canada: +1 519 725 5136

Europe: France: +33 2 32 96 04 20 – Germany: +49 7252 94 96 0 – Italy: +39 010 59 30 77 – United: Kingdom +44 1495 356300

Asia: Shanghai, China: +86 21-5835-9885 - Tianjin, China: +86 22-23321717

Singapore: +65 6268-6868 – Yamato, Japan: +81 46-265-2428 – Nagoya, Japan: +81 52-221-5950

BradCommunications and Direct-Link are trademarks of Woodhead Industries.
© 2007 Woodhead Industries, a division of Molex Incorporated.