



Data Sheet



Product Category: RF SAW Filter

Part Number	Package	Application	Last Modified
800-RF1575.42M-D	1.6 x 2.0 SMD	GPS	Mar.14, 2007

TYPE :
GPS, RF SAW Filter

PART NUMBER :
800-RF1575.42M-D

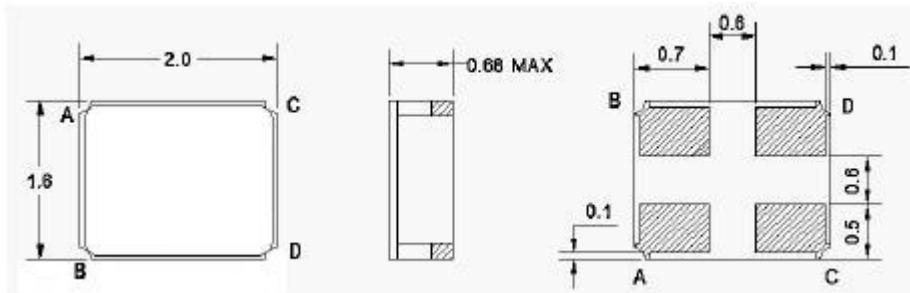


OPERATING CONDITIONS / ELECTRICAL CHARACTERISTICS

PARAMETERS	Condition	Minimum	Typical	Maximum	Units
Center Frequency (Fo)	-	-	1575.42	-	MHz
Maximum Insertion Loss	1574.42~ 1576.42 MHz	-	1.0	1.5	dB
Attenuation:	DC~ 1429.0 MHz	19	21	-	dB
	1429.0~ 1501.0 MHz	23	26	-	
	1501.0~ 1520.0MHz	20	28	-	
	1625.0~ 1650.0 MHz	15	30	-	
	1650.0~ 2200.0 MHz	21	25	-	
2200.0~ 2500.0 MHz	21	25	-	-	
Source Impedance (single ended)*	-	-	50	-	ohm
Load Impedance (single ended)*	-	-	50	-	ohm
VSWR	1574.42~ 1576.42 MHz	-	1.1	1.5	-
Amplitude Ripple	1574.42~ 1576.42 MHz	-	0.1	0.5	dBp-p
Maximum DC Voltage	-	-	-	7.5	V
Maximum Input Power	-	-	-	20	dBm
Operating Temperature	-	-40	-	+85	°C

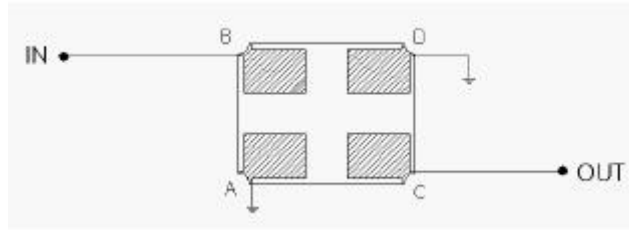
* No Matching Network(Ref. Testing Enviroment Circuit as shown below)

PACKAGE OUTLINE (mm)



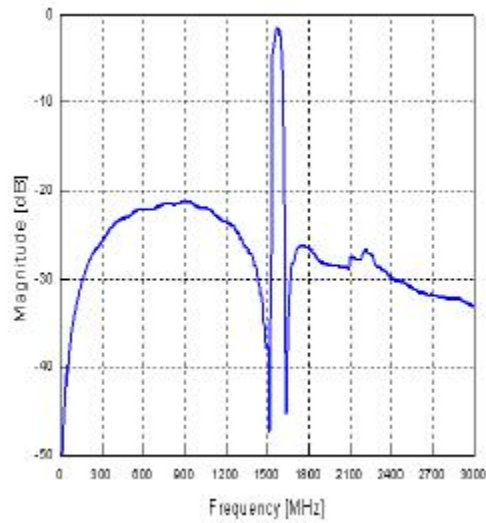
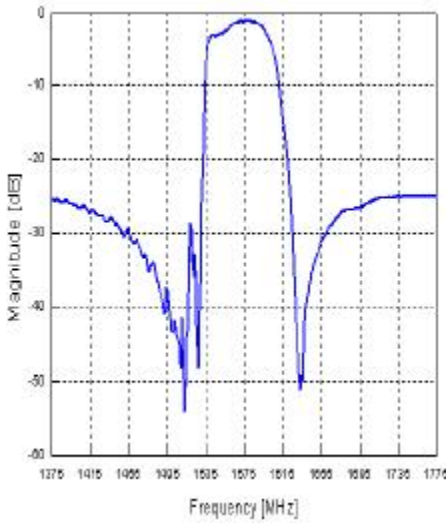
PIN LAYOUT	
A	Ground
B	In/ Out
C	In/Out
D	Ground

TEST FIXTURE

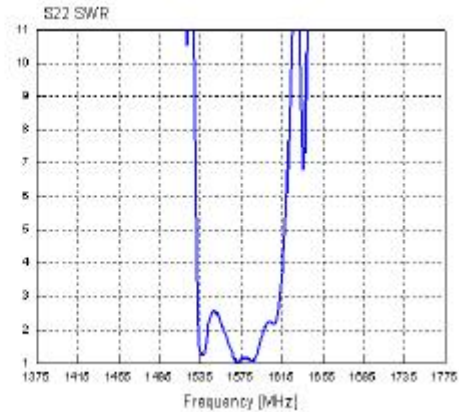
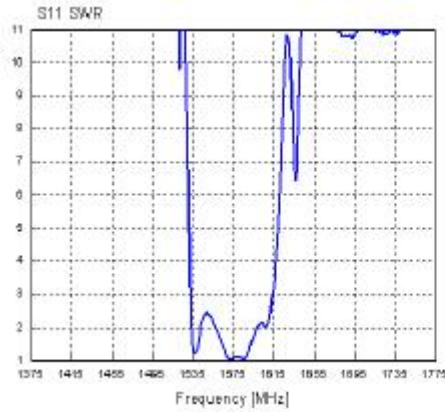


Load/ Source Impedance = 50 ohms

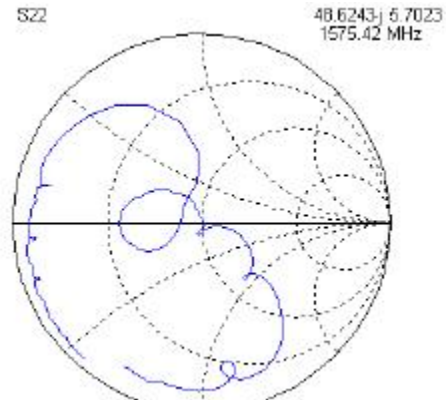
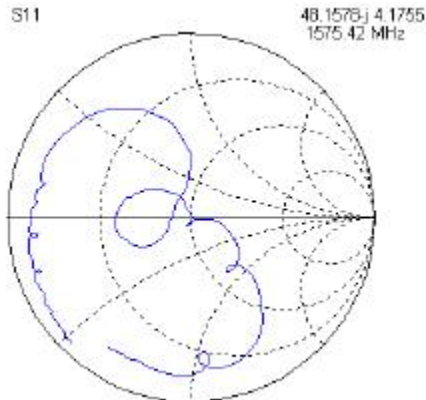
FREQUENCY RESPONSE



VSWR



SMITH CHART



Part No.: 800-RF1575.42M-D

Oscilent Corporation - CALL **949.252.0522**

18195 East McDermott Street , Building D , Irvine , CA 92614 , USA
Fax: 949.252.0599 , E-Mail: Sales@Oscilent.com

[Crystal Oscillators](#) | [Quartz Crystal](#) | [TCXO](#) | [VCXO](#) | [IF SAW Filter](#) | [RF SAW Filter](#) | [Ceramic Resonator](#)
[Crystal Filter](#) | [Ceramic Filter](#) | [SAW Filter / SAW Devices](#) | [Site Map](#)