

**PLEASE CHECK WWW.MOLEX.COM FOR LATEST PART INFORMATION**

**Part Number:** [0191980039](#)  
**Status:** **Active**  
**Description:** Avikrimp™ Block Spade Terminal for 10-12 AWG Wire

**Documents:**

[Drawing \(PDF\)](#) [RoHS Certificate of Compliance \(PDF\)](#)

**Agency Certification**

CSA LR18689  
 UL E32244

**General**

Product Family Ring and Spade Terminals  
 Series [19198](#)  
 Crimp Quality Equipment Yes  
 Mil-Spec N/A  
 Product Name Avikrimp™  
 Type Spade

**Physical**

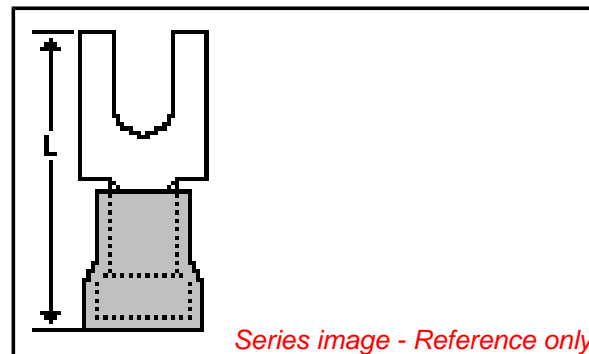
Barrel Type Closed  
 Flammability 94V-0  
 Insulation Nylon (PA)  
 Material - Plating Mating Tin  
 Packaging Type Bag  
 Plating min: Mating (µin) 12  
 Plating min: Mating (µm) 0.3  
 Plating min: Termination (µin) 12  
 Plating min: Termination (µm) 0.3  
 Stud Size 5-6 (M3-3.5)  
 Termination Interface: Style Crimp or Compression  
 Wire Insulation Diameter 5.70mm (.225") max.  
 Wire Size AWG 10, 12  
 Wire Size mm² 3.30 - 5.00

**Material Info**

Old Part Number C-8105-06

**Reference - Drawing Numbers**

Sales Drawing CCD80301, SD-19139-002



**EU RoHS**

**ELV and RoHS Compliant**  
**REACH SVHC**  
 Not Reviewed  
**Halogen-Free Status**  
 Not Reviewed

**China RoHS**



**Need more information on product environmental compliance?**

Email [productcompliance@molex.com](mailto:productcompliance@molex.com)  
 For a multiple part number RoHS Certificate of Compliance, [click here](#)

Please visit the [Contact Us](#) section for any non-product compliance questions.

**Search Parts in this Series**

[19198Series](#)

**Application Tooling | [FAQ](#)**

*Tooling specifications and manuals are found by selecting the products below. Crimp Height Specifications are then contained in the Application Tooling Specification document.*

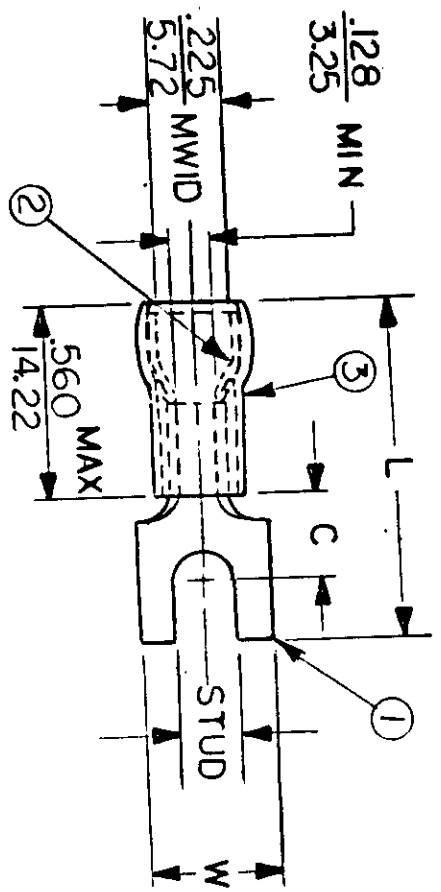
**Global**

| Description                                    | Product #                  |
|--|----------------------------|
| Hand Crimp Tool                                | <a href="#">0640010100</a> |
| Hand Crimp Tool                                | <a href="#">0640011500</a> |
| Crimp Head for the AT-200™ Pneumatic Hand Tool | <a href="#">0640050100</a> |

**NOTES:**

- ① MAT'L: COPPER (STOCK TKN.  $\frac{.040}{.02}$ )  
PLATING: ELECTRO TIN (.0003 MIN)
  - ② TIN-PLATED BRASS FUNNEL FERRULE
  - ③ NYLON INSULATION (COLOR CODED YELLOW)
- STUD SIZES: ( $\pm .005$ )
- 02 = .094  
 04 = .119  
 06 = .146  
 08 = .173  
 10 = .198  
 14 = .265  
 56 = .328  
 38 = .390

ALL DIMENSIONS =  $\frac{\text{INCHES}}{\text{MM}}$  (MWID) = DENOTES MAXIMUM WIRE INSULATION DIAMETER



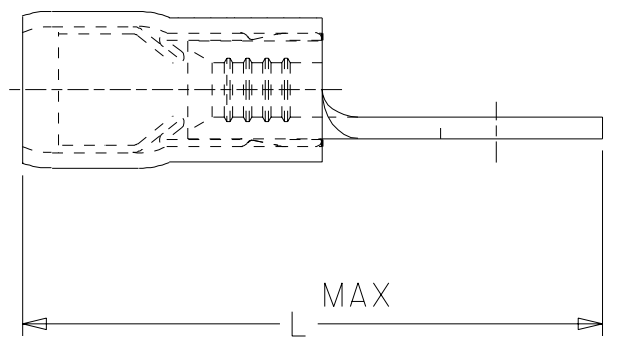
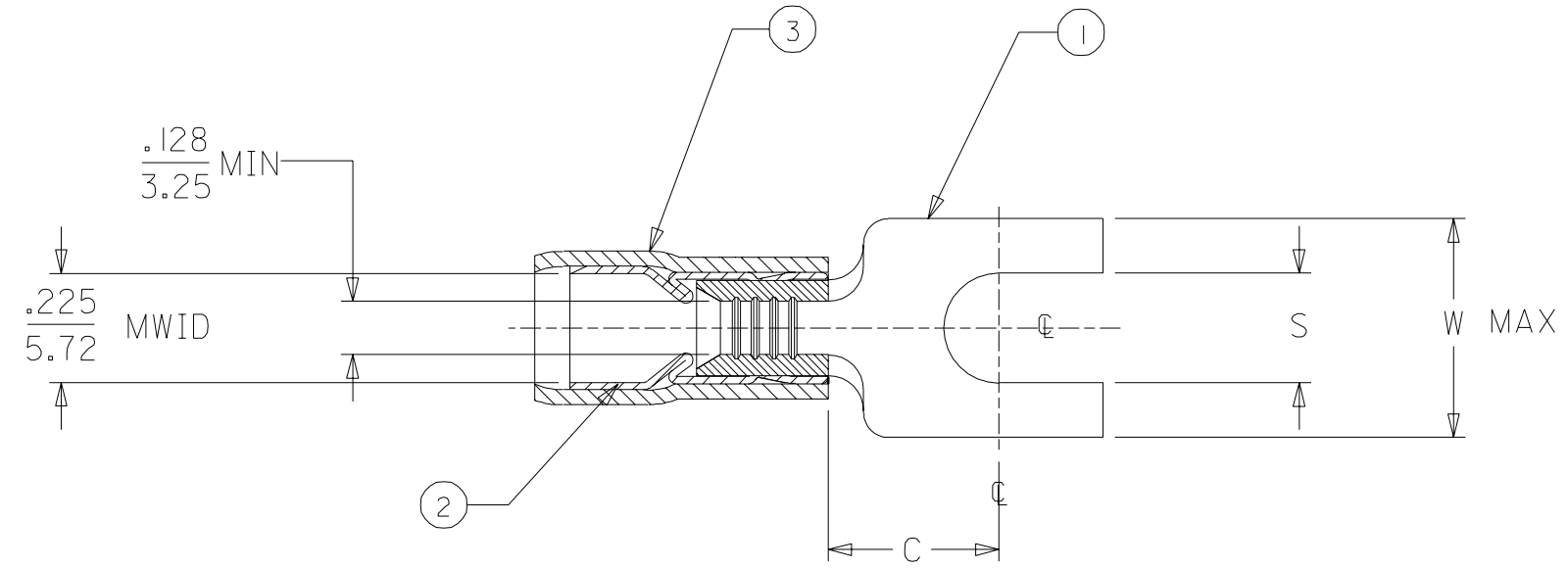
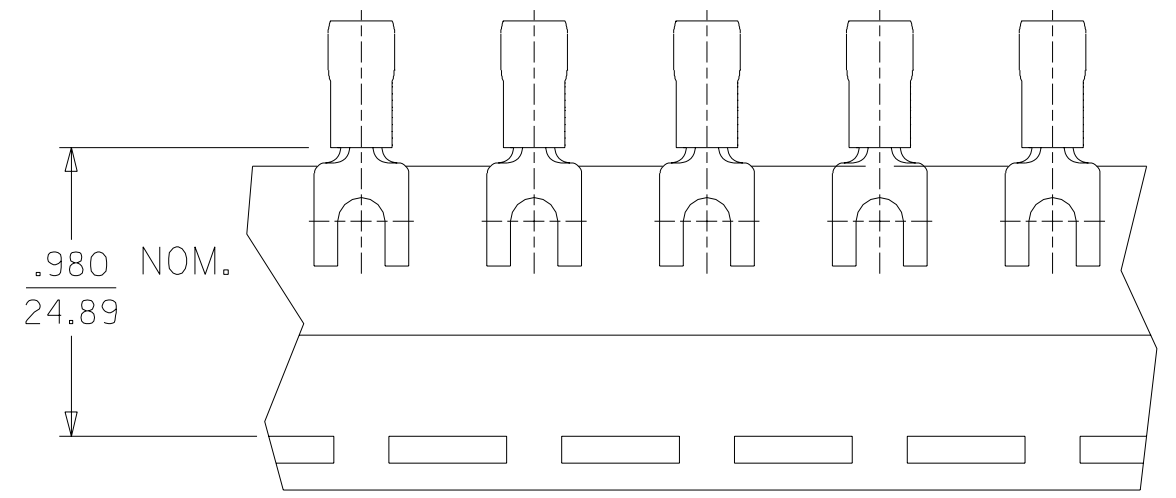
FILE NO. C-CD-803-01

| PART NUMBER | "W" ±.010            | "C" MIN.            | "L" MAX.              | SCALE: NTS | DATE     | TITLE:                                     | DIMENSIONAL TOLERANCES UNLESS OTHERWISE SPECIFIED |      |
|-------------|----------------------|---------------------|-----------------------|------------|----------|--|---|------|
|             |                      |                     |                       |            |          |  | DEC.  | ANG. |
| C-8102-     | $\frac{.415}{10.41}$ | $\frac{.305}{7.75}$ | $\frac{1.090}{27.69}$ | JJ         | 11-12-84 | SPADED TONGUE TERMINAL AVIKRIMP 800-SERIES | ±   | ±    |
| C-8105-     | $\frac{.320}{8.13}$  | $\frac{.305}{7.75}$ | $\frac{1.090}{27.69}$ | GZ         | 11-26-84 |  | ±   | ±    |
|             |                      |                     |                       |            |          |  |   |      |



DWG. NO. A CUSTOMER DWG

|   | 10              | 9                | 8             | 7         | 6           | 5            |             |              |
|---|-----------------|------------------|---------------|-----------|-------------|--------------|-------------|--------------|
|   | MATERIAL NUMBER | ALTERNATE NUMBER | "L" MAX       | STUD SIZE | "S"         | "W" MAX      | "C" MIN     | PACKAGING    |
| F | 191980039       | C-8105-06        | 1.090 (27.69) | 6         | .146 (3.71) | .320 (8.13)  | .305 (7.75) | LOOSE PIECE  |
|   | 191390060       | C-8105-08        | 1.090 (27.69) | 8         | .173 (4.39) | .320 (8.13)  | .305 (7.75) |              |
|   | 191390061       | C-8105-10        | 1.090 (27.69) | 10        | .198 (5.03) | .320 (8.13)  | .305 (7.75) |              |
|   | 191980037       | C-8102-06        | 1.090 (27.69) | 6         | .146 (3.71) | .415 (10.41) | .305 (7.75) |              |
|   | 191390057       | C-8102-08        | 1.090 (27.69) | 8         | .173 (4.39) | .415 (10.41) | .305 (7.75) |              |
| E | 191980038       | C-8102-10        | 1.090 (27.69) | 10        | .198 (5.03) | .415 (10.41) | .305 (7.75) | TAPE MOUNTED |
|   | 191980040       | C-8105-06T       | 1.090 (27.69) | 6         | .146 (3.71) | .320 (8.13)  | .305 (7.75) |              |
|   | 191980042       | C-8105-08T       | 1.090 (27.69) | 8         | .173 (4.39) | .320 (8.13)  | .305 (7.75) |              |
|   | 191980043       | C-8105-10T       | 1.090 (27.69) | 10        | .198 (5.03) | .320 (8.13)  | .305 (7.75) |              |
|   | 191390058       | C-8102-08T       | 1.090 (27.69) | 8         | .173 (4.39) | .415 (10.41) | .305 (7.75) |              |



NOTES:  
 1. MATERIAL: COPPER .040 THICK.  
 PLATING: ELECTROPLATE TIN  
 2. FERRULE: TIN-PLATED BRASS  
 3. INSULATION: YELLOW NYLON.  
 4. MWID=MAXIMUM WIRE INSULATION DIA.  
 5. ALL DIMENSIONS IN INCHES/(MM).

CUSTOMER DRAWING

|      |  |
|------|--|
| A    | REDRAWN TO CAD<br>ETC2001-0219<br>00/12/14 EDB |
| LTR. | REVISIONS                                      |

| DIMENSIONS SHOWN (METRIC) INCH  |               | REVISE ONLY ON CAD SYSTEM  |                   |        |         |        |       |         |       |        |         |       |        |                                   |  |
|---|---------------|--|-------------------|--------|---------|--------|-------|---------|-------|--------|---------|-------|--------|-----------------------------------|--|
| UNLESS OTHERWISE SPECIFIED<br>TOLERANCES: ANGULAR ± 1/2°  |               | TITLE<br>BLOCK SPADE TONGUE TERMINAL<br>22-18 AWG<br>AVIKRIMP, 800-SERIES  |                   |        |         |        |       |         |       |        |         |       |        |                                   |  |
| <table border="1"> <thead> <tr> <th></th> <th>INCH</th> <th>METRIC</th> </tr> </thead> <tbody> <tr> <td>3 PLACE</td> <td>± .005</td> <td>± ---</td> </tr> <tr> <td>2 PLACE</td> <td>± .01</td> <td>± 0.13</td> </tr> <tr> <td>1 PLACE</td> <td>± ---</td> <td>± 0.25</td> </tr> </tbody> </table> |               |  | INCH              | METRIC | 3 PLACE | ± .005 | ± --- | 2 PLACE | ± .01 | ± 0.13 | 1 PLACE | ± --- | ± 0.25 | SHEET NO. 1 OF 1<br>DATE 00/11/17 |  |
|   | INCH          | METRIC   |                   |        |         |        |       |         |       |        |         |       |        |                                   |  |
| 3 PLACE   | ± .005        | ± ---  |                   |        |         |        |       |         |       |        |         |       |        |                                   |  |
| 2 PLACE   | ± .01         | ± 0.13   |                   |        |         |        |       |         |       |        |         |       |        |                                   |  |
| 1 PLACE   | ± ---         | ± 0.25   |                   |        |         |        |       |         |       |        |         |       |        |                                   |  |
| DRAFT WHERE APPLICABLE MUST<br>REMAIN WITHIN DIMENSIONS   |               | PART NO. SEE TABLE<br>DRWG. NO. SD-19139-002   |                   |        |         |        |       |         |       |        |         |       |        |                                   |  |
| DRWG. BY EDB  | CHK'D. BY HEB | THIS DRAWING CONTAINS INFORMATION THAT IS PROPRIETARY TO MOLEX-ETC INC. AND SHOULD NOT BE USED WITHOUT WRITTEN PERMISSION. |                   |        |         |        |       |         |       |        |         |       |        |                                   |  |
| APP'D. BY RWD   | SCALE NO:NE   | FILE NAME SD19139002 DGN   | DIV. ET<br>SIZE B |        |         |        |       |         |       |        |         |       |        |                                   |  |