

Ports	2
Surface Mount Compatible (SMC)	No
Temperature Range - Operating	-40°C to +85°C
Termination Interface: Style	Through Hole - Compliant Pin
Waterproof / Dustproof	No

Electrical

Current - Maximum per Contact	0.5A
Shield Type	EMI Fingers
Shielded	Yes
Voltage - Maximum	120V AC (RMS)/DC

Solder Process Data

Replacement RoHS Compliant Part Number	0754625001
--	------------

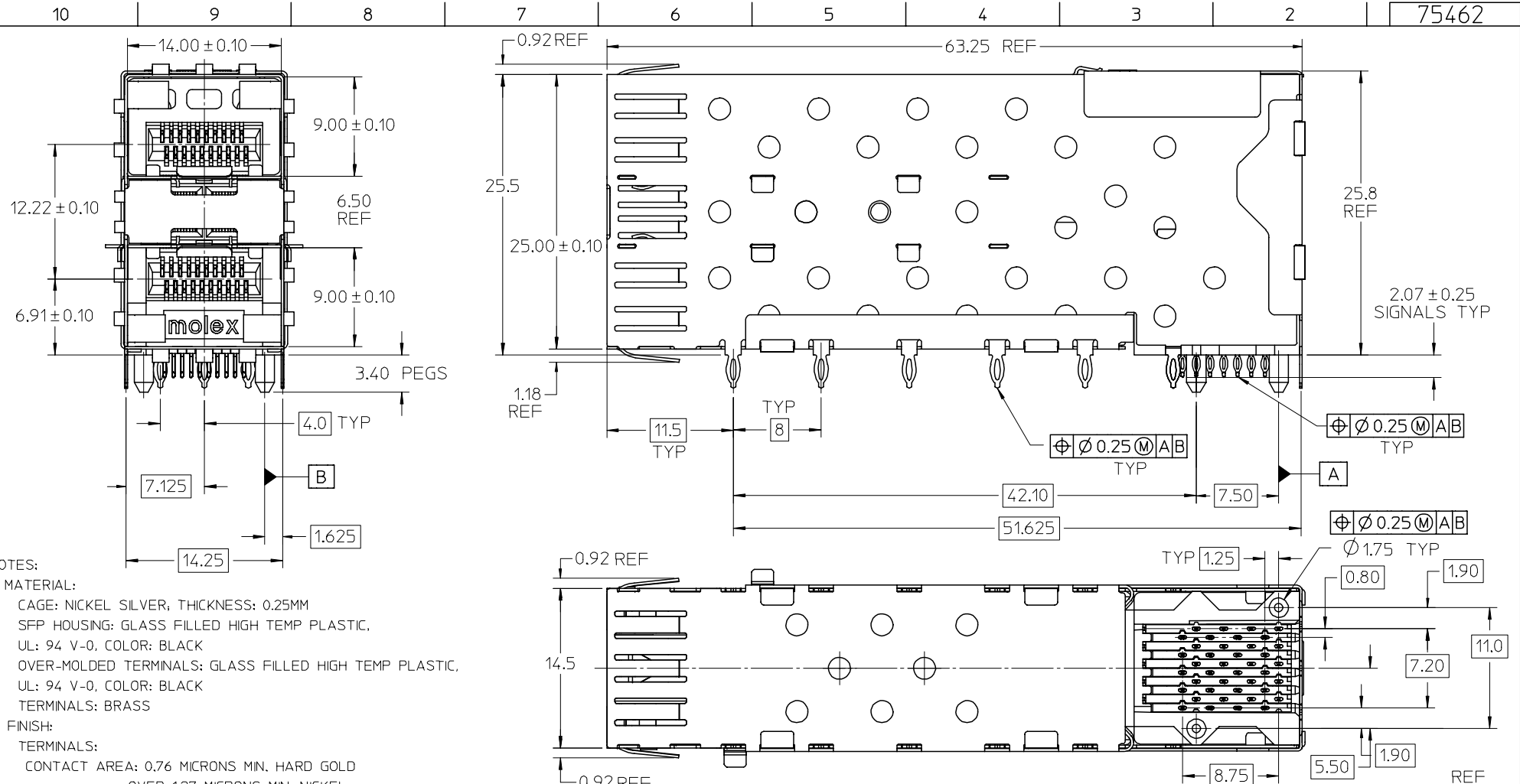
Material Info

Reference - Drawing Numbers

Application Specification	AS-75310-001
Packaging Specification	PK-75462-001
Sales Drawing	SD-75462-100

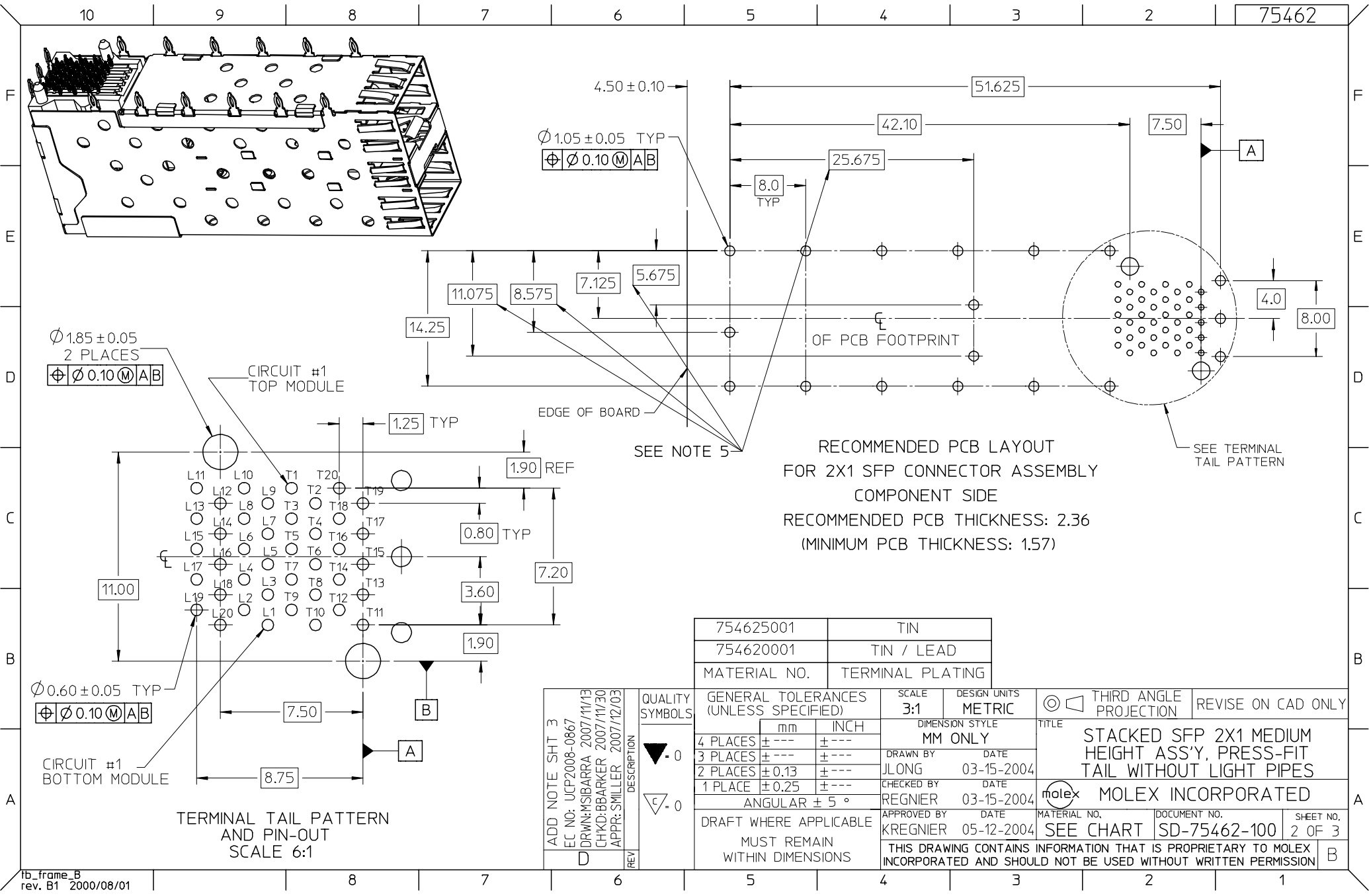
This document was generated on 05/28/2010

PLEASE CHECK WWW.MOLEX.COM FOR LATEST PART INFORMATION



- NOTES:
1. MATERIAL:
 CAGE: NICKEL SILVER, THICKNESS: 0.25MM
 SFP HOUSING: GLASS FILLED HIGH TEMP PLASTIC,
 UL: 94 V-0, COLOR: BLACK
 OVER-MOLDED TERMINALS: GLASS FILLED HIGH TEMP PLASTIC,
 UL: 94 V-0, COLOR: BLACK
 TERMINALS: BRASS
 2. FINISH:
 TERMINALS:
 CONTACT AREA: 0.76 MICRONS MIN. HARD GOLD
 OVER 1.27 MICRONS MIN. NICKEL.
 COMPLIANT TAIL - TIN/LEAD OPTION: 0.76 - 1.52 MICRONS 90/10 TIN/LEAD
 OVER 0.76 - 1.52 MICRONS NICKEL.
 COMPLIANT TAIL - TIN OPTION: 0.76 - 1.52 MICRONS TIN
 OVER 0.76 - 1.52 MICRONS NICKEL.
 3. REFER TO PS-75310-001 FOR ALL ELECTRICAL,
 MECHANICAL AND ENVIRONMENTAL SPECIFICATIONS.
 4. REFER TO PK-75462-001 FOR ALL PACKAGING SPECIFICATIONS.
 5. THE CURVED TAILS THAT GO INTO THE HOLES LOCATED BY THESE DIMENSIONS
 ARE BEING ELIMINATED. TO ACCOMMODATE THIS CONVERSION, IT IS RECOMMENDED
 THAT BOARDS DESIGNED TO THIS PRINT REVISION INCLUDE THESE HOLES.

ADD NOTE SHT 3 EC NO: UCP2008-0867 DRWN: MSIBARRA 2007/11/13 CHKD: BBARKER 2007/11/30 APPR: SMILLER 2007/12/03	QUALITY SYMBOLS ▽ - 0 ▽ - 0	GENERAL TOLERANCES (UNLESS SPECIFIED)		SCALE 3:1	DESIGN UNITS METRIC	THIRD ANGLE PROJECTION	REVISE ON CAD ONLY	
				DIMENSION STYLE MM ONLY		TITLE		
				DRAWN BY DATE		DATE		
				CHECKED BY DATE		DATE		
		APPROVED BY DATE		DATE		MATERIAL NO. DOCUMENT NO. SHEET NO.		
		DRAFT WHERE APPLICABLE MUST REMAIN WITHIN DIMENSIONS		KREGNIER 05-12-2004		SEE CHART SD-75462-100 1 OF 3		
THIS DRAWING CONTAINS INFORMATION THAT IS PROPRIETARY TO MOLEX INCORPORATED AND SHOULD NOT BE USED WITHOUT WRITTEN PERMISSION								



RECOMMENDED PCB LAYOUT
 FOR 2X1 SFP CONNECTOR ASSEMBLY
 COMPONENT SIDE
 RECOMMENDED PCB THICKNESS: 2.36
 (MINIMUM PCB THICKNESS: 1.57)

TERMINAL TAIL PATTERN
 AND PIN-OUT
 SCALE 6:1

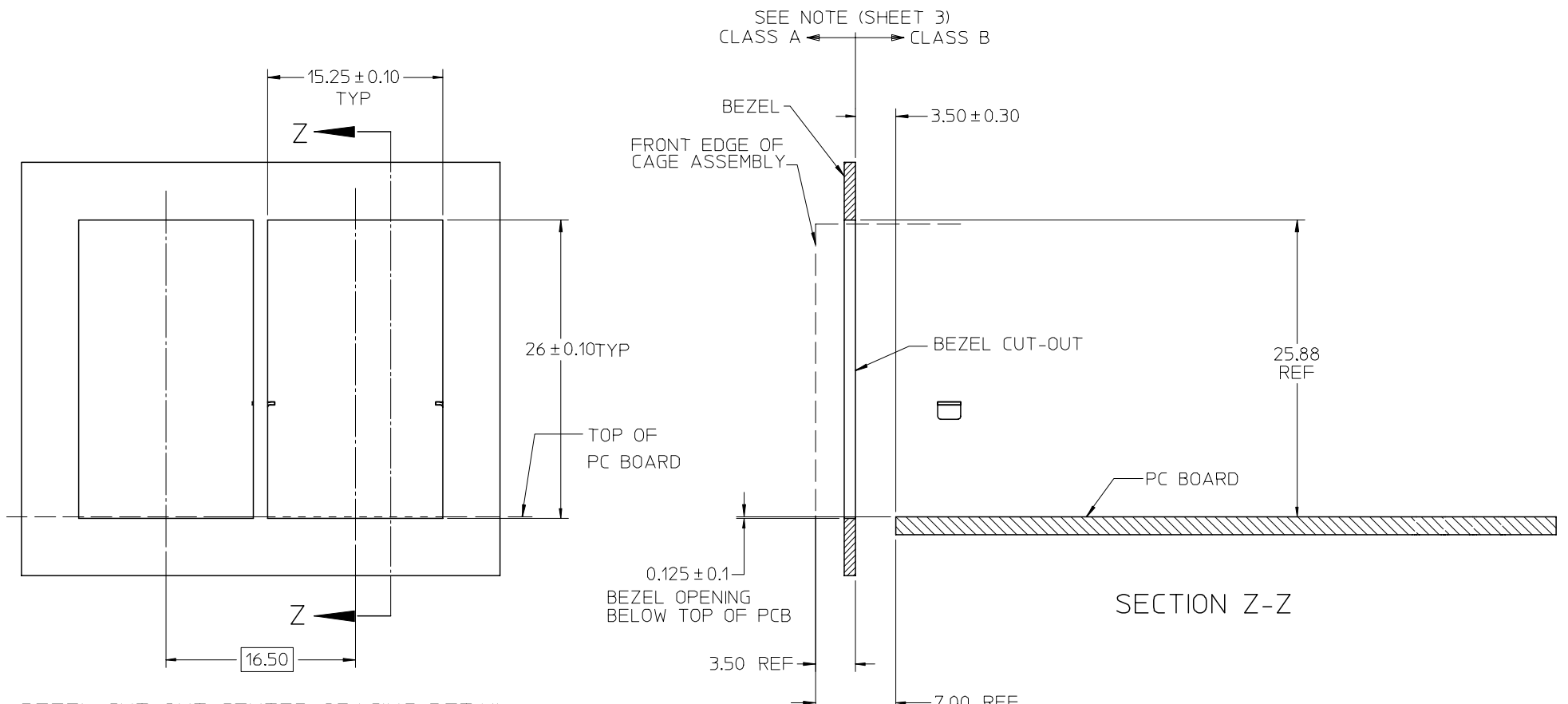
754625001	TIN
754620001	TIN / LEAD
MATERIAL NO.	TERMINAL PLATING

ADD NOTE SHT 3	QUALITY SYMBOLS
EC NO: UCP2008-0867	▽ = 0
DRWN: MSIBARRA 2007/11/13	▽ = 0
CHKD: BBARKER 2007/11/30	
APPR: SMILLER 2007/12/03	
REV	DESCRIPTION
D	

GENERAL TOLERANCES (UNLESS SPECIFIED)	
mm	INCH
4 PLACES ± ---	± ---
3 PLACES ± ---	± ---
2 PLACES ± 0.13	± ---
1 PLACE ± 0.25	± ---
ANGULAR ± 5 °	
DRAFT WHERE APPLICABLE	
MUST REMAIN WITHIN DIMENSIONS	

SCALE 3:1	DESIGN UNITS METRIC
DIMENSION STYLE MM ONLY	
DRAWN BY JLONG	DATE 03-15-2004
CHECKED BY REGNIER	DATE 03-15-2004
APPROVED BY KREGNIER	DATE 05-12-2004

THIRD ANGLE PROJECTION	REVISE ON CAD ONLY
TITLE STACKED SFP 2X1 MEDIUM HEIGHT ASS'Y, PRESS-FIT TAIL WITHOUT LIGHT PIPES	
MOLEX INCORPORATED	
MATERIAL NO. SEE CHART	DOCUMENT NO. SD-75462-100
SHEET NO. 2 OF 3	
THIS DRAWING CONTAINS INFORMATION THAT IS PROPRIETARY TO MOLEX INCORPORATED AND SHOULD NOT BE USED WITHOUT WRITTEN PERMISSION	



BEZEL CUT-OUT CENTER SPACING DETAIL
BEZEL THICKNESS 0.8 - 2.6

NOTE:
PART COMPLIES WITH COSMETIC SPECIFICATION PS-45499-002.
SEE SECTION Z-Z FOR SURFACE CLASSIFICATIONS.
UNDERSIDE OF CAGE COMPLIES WITH CLASS 'C'.

ADD NOTE EC NO: UCP2008-0867 DRWN: MSIBARRA 2007/11/13 CHKD: BBARKER 2007/11/30 APPR: SMILLER 2007/12/03	QUALITY SYMBOLS ▽ = 0 ▽ = 0	GENERAL TOLERANCES (UNLESS SPECIFIED)		SCALE 3:1	DESIGN UNITS METRIC	THIRD ANGLE PROJECTION	REVISE ON CAD ONLY	
			mm	INCH	DIMENSION STYLE MM ONLY		TITLE	
		4 PLACES	± ---	± ---	DRAWN BY JLONG	DATE 03-15-2004	STACKED SFP 2X1 MEDIUM HEIGHT ASS'Y, PRESS-FIT TAIL WITHOUT LIGHT PIPES	
		3 PLACES	± ---	± ---	CHECKED BY REGNIER	DATE 03-15-2004	MOLEX INCORPORATED	
	2 PLACES	± 0.13	± ---	APPROVED BY KREGNIER	DATE 05-12-2004	MATERIAL NO. SEE CHART	DOCUMENT NO. SD-75462-100	
	1 PLACE	± 0.25	± ---	DRAFT WHERE APPLICABLE MUST REMAIN WITHIN DIMENSIONS		SHEET NO. 3 OF 3		
		ANGULAR ± 5 °		THIS DRAWING CONTAINS INFORMATION THAT IS PROPRIETARY TO MOLEX INCORPORATED AND SHOULD NOT BE USED WITHOUT WRITTEN PERMISSION				