

**PLEASE CHECK WWW.MOLEX.COM FOR LATEST PART INFORMATION**

**Part Number:** [0441930002](#)  
**Status:** **Active**  
**Overview:** [modular\\_plugs\\_jacks](#)  
**Description:** Modular Jack, Right Angle, Low Profile, SMT, 8/6, 2 Ports

**Documents:**

[3D Model](#) [Product Specification PS-43743-0001 \(PDF\)](#)  
[Drawing \(PDF\)](#) [RoHS Certificate of Compliance \(PDF\)](#)

**Agency Certification**

CSA LR19980  
 UL E107635

**General**

Product Family Modular Jacks/Plugs  
 Series [44193](#)  
 Comments Flush Solder Tabs  
 Component Type PCB Jack  
 Magnetic No  
 Overview [modular\\_plugs\\_jacks](#)  
 Performance Category 3, 4  
 Power over Ethernet (PoE) N/A  
 Product Name RJ45

**Physical**

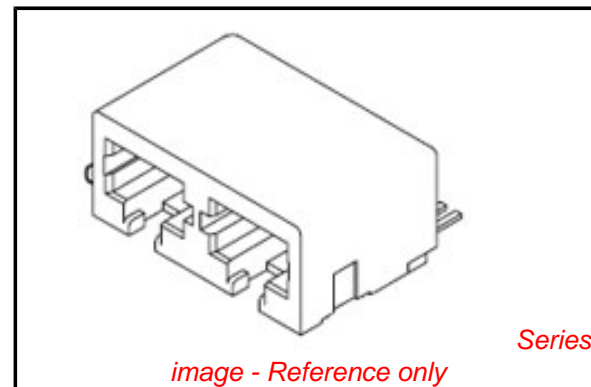
Color - Resin Black  
 Durability (mating cycles max) 500  
 Flammability 94V-0  
 Inverted / Top Latch No  
 Lightpipes/LEDs None  
 Material - Metal Phosphor Bronze  
 Material - Plating Mating Gold  
 Material - Plating Termination Tin  
 Material - Resin High Temperature Thermoplastic  
 Orientation Right Angle (Side Entry)  
 PCB Retention Yes  
 Packaging Type Embossed Tape on Reel  
 Plating min: Mating (µin) 50  
 Plating min: Mating (µm) 1.25  
 Plating min: Termination (µin) 100  
 Plating min: Termination (µm) 2.5  
 Ports 2  
 Positions / Loaded Contacts 8/6  
 Surface Mount Compatible (SMC) N/A  
 Temperature Range - Operating -40°C to +80°C  
 Termination Interface: Style Surface Mount  
 Wire/Cable Type N/A

**Electrical**

Current - Maximum per Contact 1.5A  
 Shielded No  
 Voltage - Maximum 125V

**Solder Process Data**

Lead-free Process Capability Reflow Capable (SMT only)  
 Process Temperature max. C 235



**EU RoHS**

**ELV and RoHS  
 Compliant**  
**REACH SVHC**  
 Not Reviewed  
**Halogen-Free  
 Status**  
**Not Reviewed**

**China RoHS**



**Need more information on product  
 environmental compliance?**

Email [productcompliance@molex.com](mailto:productcompliance@molex.com)  
 For a multiple part number RoHS Certificate of  
 Compliance, [click here](#)

Please visit the [Contact Us](#) section for any  
 non-product compliance questions.

**Search Parts in this Series**

[44193Series](#)

**Mates With**

FCC 68 Plugs

**Material Info**

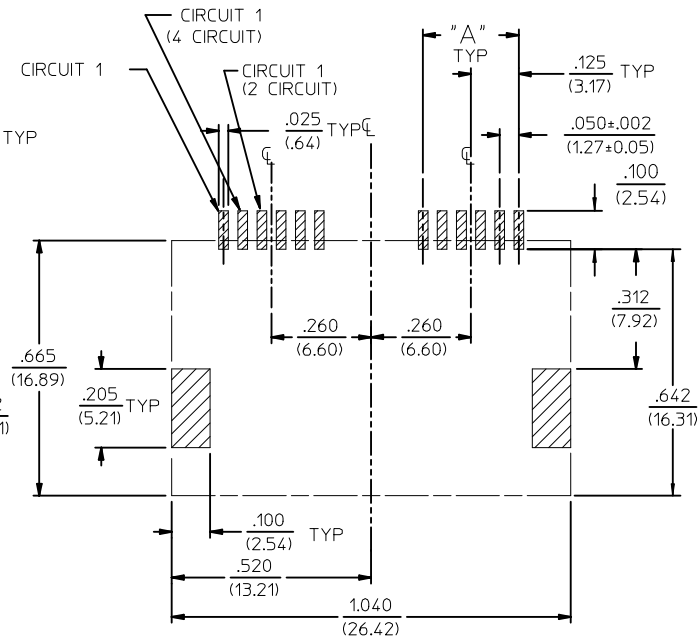
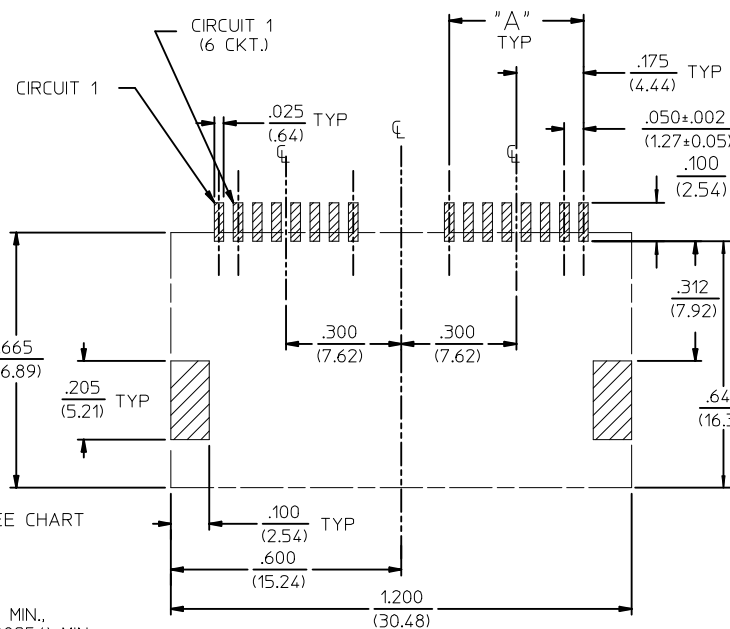
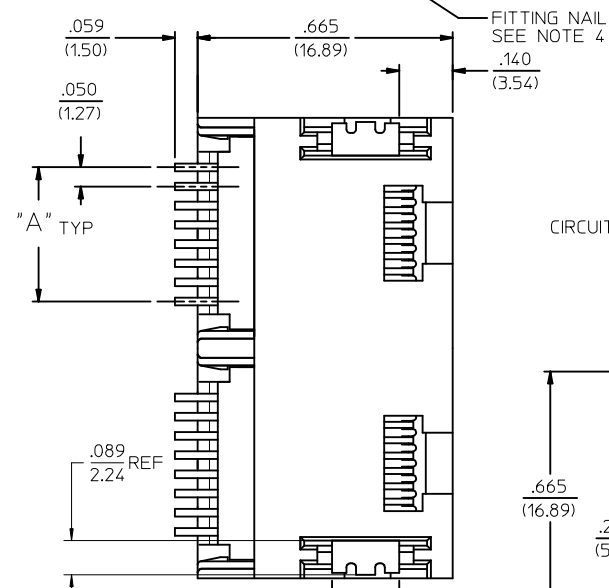
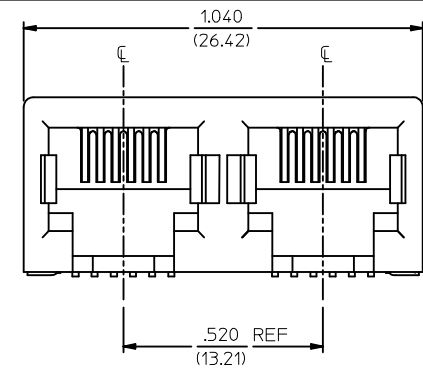
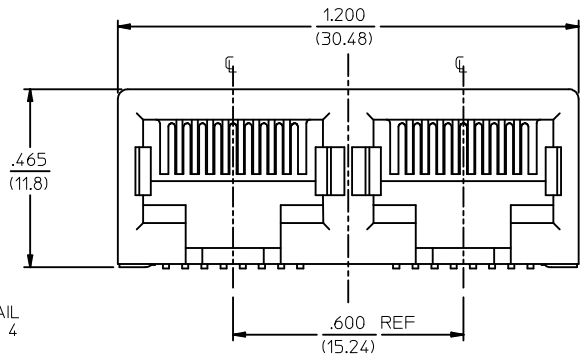
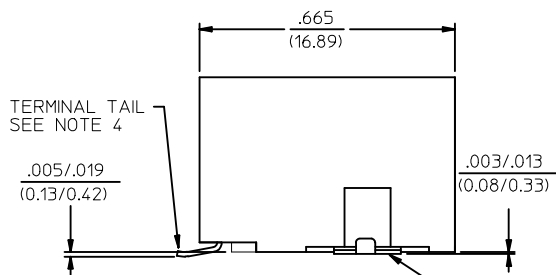
**Reference - Drawing Numbers**

Packaging Specification  
Product Specification  
Sales Drawing

PK-70873-700\*  
PS-43743-0001  
SD-44193-001

This document was generated on 06/07/2010

**PLEASE CHECK [WWW.MOLEX.COM](http://WWW.MOLEX.COM) FOR LATEST PART INFORMATION**



NOTES :

- MATERIALS :  
HOUSING : NYLON, GLASS-FILLED, UL94V-0, COLOR - SEE CHART  
TERMINALS : PHOSPHOR BRONZE, .012/(0.30)  
FITTING NAILS : BRASS ALLOY, .010/(0.25)
- FINISH :  
TERMINAL PLATING OPTIONS : (SEE TABLE)  
(A) SELECT GOLD IN CONTACT AREA: .000050/(0.00127) MIN.,  
\*SELECT MATTE TIN IN PC TAIL AREA: .000100/(0.00254) MIN.,  
WITH OVERALL NICKEL UNDERPLATE: .000050/(0.00127) MIN.  
(B) SELECT GOLD IN CONTACT AREA: .000030/(0.00076) MIN.,  
\*SELECT MATTE TIN IN PC TAIL AREA: .000100/(0.00254) MIN.,  
WITH OVERALL NICKEL UNDERPLATE: .000050/(0.00127) MIN.  
(C) SELECT GOLD IN CONTACT AREA: .000015/(0.00038) MIN.,  
\*SELECT MATTE TIN IN PC TAIL AREA: .000100/(0.00254) MIN.,  
WITH OVERALL NICKEL UNDERPLATE: .000050/(0.00127) MIN.
- FITTING NAILS :  
\*100 MICROINCHES MATTE TIN OVER 50 MICROINCHES NICKEL UNDERPLATE  
\*THE PRIMARY SHIPPING CARTON WILL BE LABELED "ELV AND RoHS COMPLIANT". CARTONS WITHOUT THIS LABEL MAY CONTAIN PRODUCT WITH TIN-LEAD IN THE PC TAIL AREA.
- PRODUCT SPECIFICATION : PS-43743-001
- COPLANARITY SPECIFICATIONS:  
WITH THE MODULAR JACK SITTING ON A LEVEL SURFACE, THE MAXIMUM GAP BETWEEN THE LEVEL SURFACE AND ALL TERMINAL TAILS AND BOTH FITTING NAILS IS .006/(0.15).
- FOR ASSEMBLIES HAVING VOIDED CIRCUITS, THE TAIL PORTION IS CUT AND REMOVED. THE MATING PORTION OF THE TERMINAL REMAINS INTACT. VOIDED CIRCUITS MUST BE THE SAME FOR BOTH PORTS.
- CONVECTION SOLDERING TECHNOLOGY SHOULD BE USED WHEN GANGING MODULAR JACKS WITH INBOARD NAILS SIDE-BY-SIDE.
- THIS PART CONFORMS TO CLASS B REQUIREMENTS OF COSMETIC SPECIFICATION PS-45499-002.

PC BOARD LAYOUT FOR 8 POSITION HOUSING  
(COMPONENT SIDE OF BOARD)

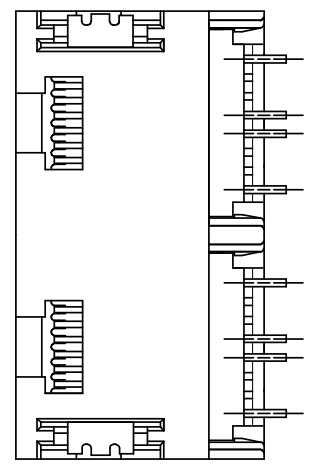
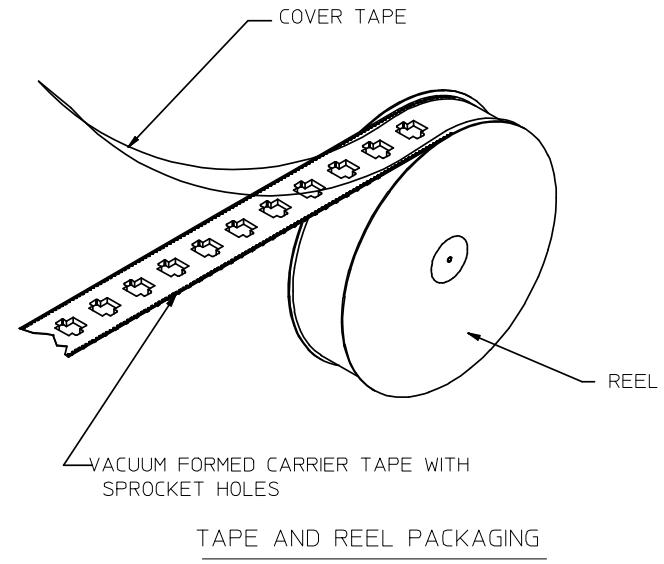
PC BOARD LAYOUT FOR 6 POSITION HOUSING  
(COMPONENT SIDE OF BOARD)

2	G1
1	G2
	SHREV

<b>REVISED NOTES</b> EC NO: UCP2009-1244 DRAWN: KLOSTNER 2008/12/10 CHKD: JEBEL 2008/12/10 APPR: FBMITH 2008/12/10	DESCRIPTION G2	QUALITY SYMBOLS	GENERAL TOLERANCES (UNLESS SPECIFIED) <table border="1"> <tr><th colspan="2">mm</th><th colspan="2">INCH</th></tr> <tr><td>4 PLACES ±</td><td>---</td><td>±</td><td>---</td></tr> <tr><td>3 PLACES ±</td><td>---</td><td>±</td><td>.010</td></tr> <tr><td>2 PLACES ±</td><td>.25</td><td>±</td><td>.015</td></tr> <tr><td>1 PLACE ±</td><td>0.38</td><td>±</td><td>---</td></tr> </table> ANGULAR ±1/2°	mm		INCH		4 PLACES ±	---	±	---	3 PLACES ±	---	±	.010	2 PLACES ±	.25	±	.015	1 PLACE ±	0.38	±	---	DIMENSION STYLE IN/MM	SCALE 1:1	DESIGN UNITS INCH	THIRD ANGLE PROJECTION
		mm		INCH																							
		4 PLACES ±		---	±	---																					
		3 PLACES ±		---	±	.010																					
2 PLACES ±	.25	±	.015																								
1 PLACE ±	0.38	±	---																								
DRAWN BY MUELLER	DATE 98/06/11	TITLE 4, 6, & 8 CIRCUIT DUAL PORT SMT MODULAR JACK W/ FLUSH MOUNT NAILS																									
CHECKED BY ROBERTS	DATE 98/06/16	MATERIAL NO. SEE SHT 2																									
APPROVED BY EDGLEY	DATE 98/06/17	DOCUMENT NO. SD-44193-001																									
DRAFT WHERE APPLICABLE MUST REMAIN WITHIN DIMENSIONS		SHEET NO. 1 OF 2		THIS DRAWING CONTAINS INFORMATION THAT IS PROPRIETARY TO MOLEX INCORPORATED AND SHOULD NOT BE USED WITHOUT WRITTEN PERMISSION																							

	13	12	11	10	9	8	7	6	5	4	3	2	1
	ASSEMBLY ITEM NO.	CONNECTOR SIZE	CIRCUIT SIZE	TERMINAL PLATING	TAPE & REEL PACKAGING NO.	VOIDED CIRCUITS	HOUSING COLOR						
J	44193-0001	8	4	A	PK-70873-7004	NA	BLACK						
	44193-0002	8	6	A	PK-70873-7004								
	44193-0003	8	8	A	PK-70873-7004								
I	44193-0004	6	4	A	PK-70873-7003								
	44193-0005	6	6	A	PK-70873-7003								
	44193-0006	8	4	B	PK-70873-7004								
H	44193-0007	8	6	B	PK-70873-7004								
	44193-0008	8	8	B	PK-70873-7004								
	44193-0009	6	4	B	PK-70873-7003								
	44193-0010	6	6	B	PK-70873-7003								
G	44193-0011	8	4	C	PK-70873-7004								
	44193-0012	8	6	C	PK-70873-7004								
	44193-0013	8	8	C	PK-70873-7004								
	44193-0014	6	4	C	PK-70873-7003								
F	44193-0015	6	6	C	PK-70873-7003								
	44193-0016	6	2	A	PK-70873-7003								
	44193-0017	6	2	B	PK-70873-7003								
E	44193-0018	6	2	C	PK-70873-7003								

HOUSING SIZE	CIRCUIT SIZE	DIM. A
6	6	.250 (6.35)
6	4	.150 (3.81)
6	2	.050 (1.27)
8	8	.350 (8.89)
8	6	.250 (6.35)
8	4	.150 (3.81)



TYPICAL VIEW SHOWING VOIDED CIRCUIT (CIRCUITS 2,3,6,7 SHOWN VOIDED)

<b>OBSOLETE 441930019</b> EC NO: UCP2008-1189 DRAWN: JBELL 2007/11/30 CHKD: LSCHMIDT 2008/02/20 APPR: FSMITH 2008/03/04	QUALITY SYMBOLS	GENERAL TOLERANCES (UNLESS SPECIFIED)	DIMENSION STYLE	SCALE	DESIGN UNITS	THIRD ANGLE PROJECTION																		
	$\nabla=0$ $\nabla=0$	<table border="1"> <thead> <tr> <th></th> <th>mm</th> <th>INCH</th> </tr> </thead> <tbody> <tr> <td>4 PLACES</td> <td>±---</td> <td>±---</td> </tr> <tr> <td>3 PLACES</td> <td>±---</td> <td>±.010</td> </tr> <tr> <td>2 PLACES</td> <td>±0.25</td> <td>±.015</td> </tr> <tr> <td>1 PLACE</td> <td>±0.38</td> <td>±---</td> </tr> <tr> <td colspan="3">ANGULAR ±1/2°</td> </tr> </tbody> </table>		mm	INCH	4 PLACES	±---	±---	3 PLACES	±---	±.010	2 PLACES	±0.25	±.015	1 PLACE	±0.38	±---	ANGULAR ±1/2°			IN/MM	4:1	INCH	
		mm	INCH																					
	4 PLACES	±---	±---																					
3 PLACES	±---	±.010																						
2 PLACES	±0.25	±.015																						
1 PLACE	±0.38	±---																						
ANGULAR ±1/2°																								
DESCRIPTION	DRAWN BY	DATE	TITLE	<b>MOLEX INCORPORATED</b>																				
G1	MUELLER	98/06/11	2 PORT SMT. JACK ASSY W/FLUSH MOUNT NAILS	DOCUMENT NO.	SD-44193-001	SHEET NO. 2 OF 2																		

DRAFT WHERE APPLICABLE MUST REMAIN WITHIN DIMENSIONS

SEE CHART

THIS DRAWING CONTAINS INFORMATION THAT IS PROPRIETARY TO MOLEX INCORPORATED AND SHOULD NOT BE USED WITHOUT WRITTEN PERMISSION