

Recommended P.C.B. Layout
Layout Tolerance = ± 0.05 mm

NOTE:

- MATERIAL,
HOUSING: HIGH TEMP PLASTIC, UL94-V0
TERMINAL: COPPER ALLOY, T=0.15MM
CAP: STAINLESS STEEL, T=0.1MM
- FINISH:
TERMINAL: GOLD AT CONTACT,
G/F OVER 1.27um (50u")MIN Ni OVER ALL
- SPEC.:
PRODUCT SPEC: GS-12-629
PACKING SPEC: GS-14-1420
- THE HSG. WILL WITHSTAND EXPOSURE TO 260C
PEAK TEMP. FOR 10 SEC. IN A CONVECTION, INFRA-RED
OR VAPOR PHASE REFLOW OVEN.
- PRODUCT NUMBERING:
20021321 - 0 0 0 XX X X LF

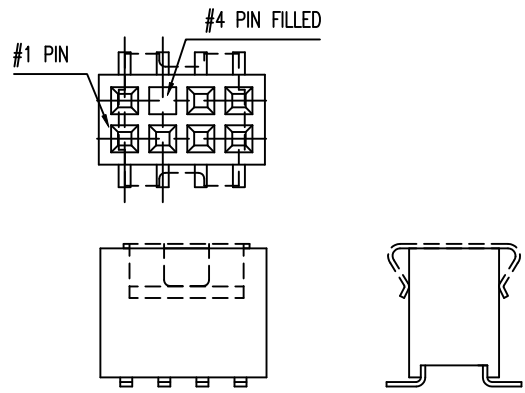
LEAD FREE
PLATING:
1: GOLD FLASH, ALL OVER
4: 0.25um(10U")GOLD AT CONTACT
8: 0.76um(30U")GOLD AT CONTACT
PACKING
D: TUBE+ CAP
T: TUBE
C: REEL+CAP(6,8,10,12,16,20P)
PIN COUNT
6,8,10,12, ,,,, 98, A0
(EVERY EVEN PIN)
SELECTED LOADED OPTION
0: FULLY LOADED
1: SEE TABLE 1

Tous droits strictement reserves. Reproduction ou communication a des tiers interdite sous quelque forme que ce soit sans autorisation écrite du propriétaire. Propriété de c.FCI. Droits de reproduction FCI.




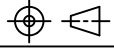
All rights strictly reserved. Reproduction or issue to third parties in any form whatsoever is not permitted without written authority from the proprietor. Property of FCI. Copyright FCI.

mat'l. code				tolerances unless otherwise specified		CUSTOMER COPY	FCI www.fciconnect.com	
ltr	ecn no	dr	date	linear	.X ± 0.38	projection	title	
A	T09-1117	S.LIN	09/15/09		.XX ± 0.25		1.27X1.27MM BTB, RECEPTACLE SMT	
B	T10-0019	S.LIN	01/20/10		.XXX ± 0.10			
C	T10-0061	S.LIN	10'-5-07	angles	0° ±2'	MM	product family 585	
				dr	STERLING LIN 09/15/09		code	
				engr	STERLING LIN 09/15/09		size	
				chr	GARY HSIEH 09/15/09		TWN	
				appd	JOSEPH HSIA 09/15/09	scale	A4	20021321
sheet index	revision sheet	C	C			NA	sheet 1 of 2	
		1	2					



P/N: 20021321-00108D4LF

DASH No.	DIM	Amount of Pins	PIN REMOVED	PIN FILLED
-001 08 D4 LF		8	-	4

mat'l. code				tolerances unless otherwise specified		CUSTOMER COPY	 www.fciconnect.com		
ltr	ecn no	dr	date	linear	.X ± 0.38	projection	title		
A	T09-1117	S.LIN	09/15/09		.XX ± 0.25		1.27X1.27MM BTB, RECEPTACLE SMT		
B	T10-0019	S.LIN	01/20/10		.XXX ± 0.10				
C	T10-0061	S.LIN	10'-5-07	angles	0° ±2'	 MM	product family 585		code
				dr	STERLING LIN 09/15/09		size dwg no		TWN
				engr	STERLING LIN 09/15/09		20021321		sheet
				chr	GARY HSIEH 09/15/09	scale			2 of 2
				appd	JOSEPH HSIA 09/15/09	NA			
sheet index	revision sheet	C 1	C 2						

Tous droits strictement reserves. Reproduction ou communication a des tiers interdite sous quelque forme que ce soit sans autorisation ecrite du proprietare. Propriete de c.FCI. Droits de reproduction FCI.



All rights strictly reserved. Reproduction or issue to third parties in any form whatsoever is not permitted without written authority from the proprietor. Property of FCI. Copyright FCI.