

**PLEASE CHECK WWW.MOLEX.COM FOR LATEST PART INFORMATION**

**Part Number:** [0930715001](#)  
**Status:** **Active**  
**Overview:** [rast\\_25\\_connector\\_system](#)  
**Description:** 5.00mm (.197") Pitch Appli-Mate RAST 2.5 Header, Vertical, 7 Circuits, Reference K00, Glow Wire Compatible

**Documents:**

[3D Model](#) [RoHS Certificate of Compliance \(PDF\)](#)  
[Drawing \(PDF\)](#)

**Agency Certification**

CSA LR19980  
 UL E29179

**General**

Product Family PCB Headers  
 Series [93071](#)  
 Application Wire-to-Board  
 Overview [rast\\_25\\_connector\\_system](#)  
 Product Name RAST 2.5

**Physical**

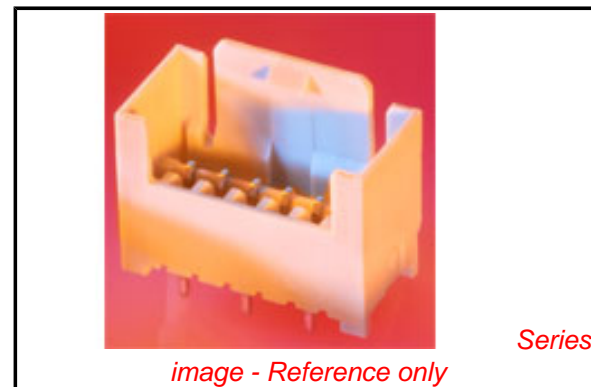
Breakaway No  
 Circuits (Loaded) 7  
 Circuits (maximum) 7  
 Color - Resin Natural  
 Durability (mating cycles max) 10  
 First Mate / Last Break No  
 Flammability 94V-0  
 Glow-Wire Compliant Yes  
 Guide to Mating Part No  
 Keying to Mating Part None  
 Lock to Mating Part Yes  
 Material - Metal Brass  
 Material - Plating Mating Tin  
 Material - Plating Termination Tin  
 Material - Resin Nylon  
 Number of Rows 1  
 Orientation Vertical  
 PCB Thickness Recommended (in) 0.059 In  
 PCB Thickness Recommended (mm) 1.50 mm  
 Packaging Type Carton  
 Pitch - Mating Interface (in) 0.196 In  
 Pitch - Mating Interface (mm) 5.00 mm  
 Polarized to PCB Yes  
 Stackable No  
 Surface Mount Compatible (SMC) No  
 Temperature Range - Operating -20C TO +120C  
 Termination Interface: Style Through Hole

**Electrical**

Current - Maximum per Contact 6A  
 Voltage - Maximum 250V

**Material Info**

**Reference - Drawing Numbers**



**EU RoHS**

**ELV and RoHS Compliant**  
**REACH SVHC Not Reviewed**  
**Halogen-Free Status Not Reviewed**

**China RoHS**



**Need more information on product environmental compliance?**

Email [productcompliance@molex.com](mailto:productcompliance@molex.com)  
 For a multiple part number RoHS Certificate of Compliance, [click here](#)

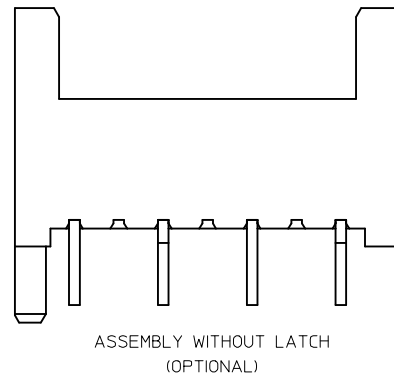
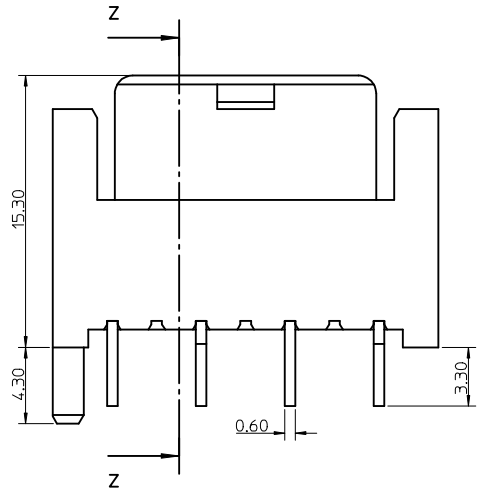
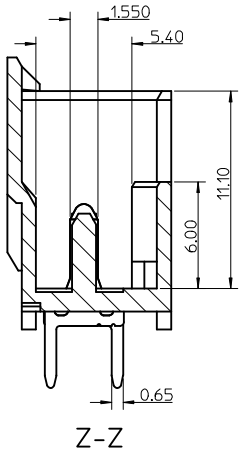
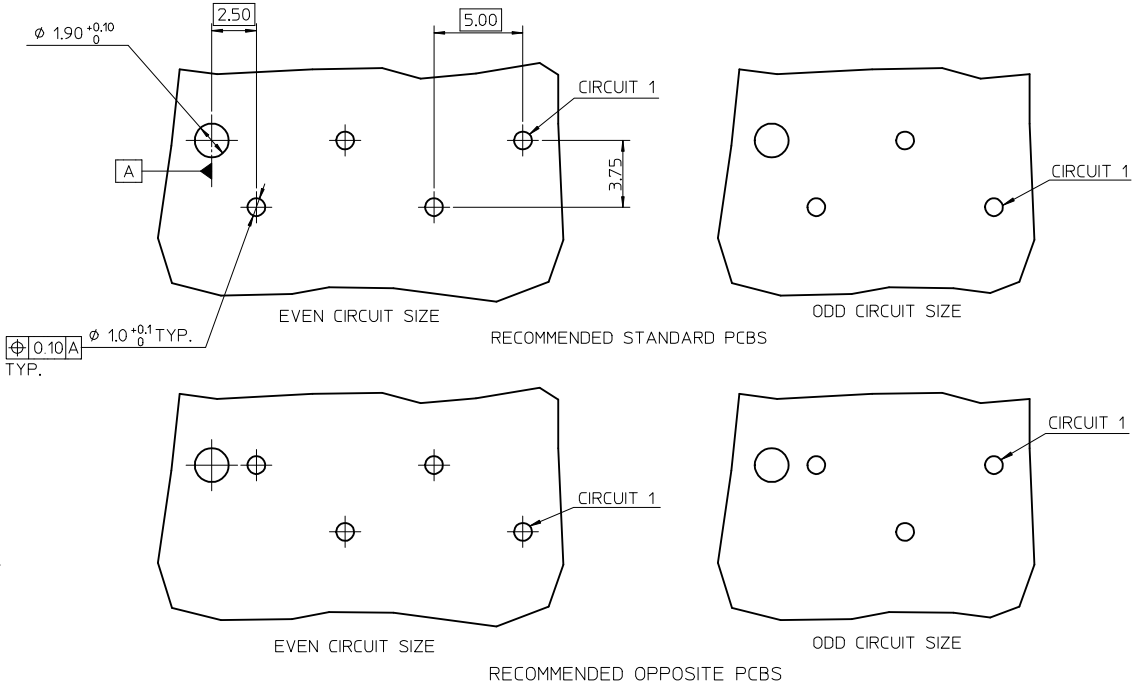
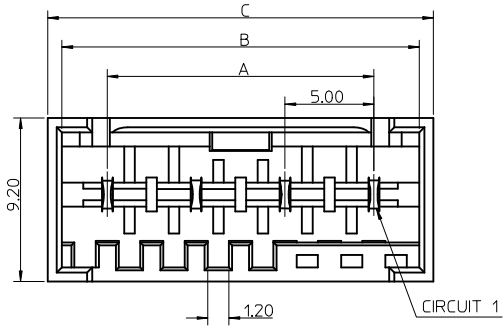
Please visit the [Contact Us](#) section for any non-product compliance questions.

**Search Parts in this Series**  
[93071Series](#)

This document was generated on 05/26/2010

**PLEASE CHECK [WWW.MOLEX.COM](http://WWW.MOLEX.COM) FOR LATEST PART INFORMATION**

| CCT | A    | B    | C    |
|-----|------|------|------|
| 2   | 5.0  | 10.1 | 11.7 |
| 3   | 10.0 | 15.1 | 16.7 |
| 4   | 15.0 | 20.1 | 21.7 |
| 5   | 20.0 | 25.1 | 26.7 |
| 6   | 25.0 | 30.1 | 31.7 |
| 7   | 30.0 | 35.1 | 36.7 |
| 8   | 35.0 | 40.1 | 41.7 |



NOTES:

- MATERIAL: HOUSING - PA66 25% G/F, UL94 V-0  
COLOUR: NATURAL  
TERMINAL - BRASS  
PLATING - 3-7um Sn over 1.27um Min Ni
- PARTS PACKED AS PER PK-93070-001
- PRODUCT SPECIFICATION: PS-99039-0040
- RECOMMENDED PCB THICKNESS: 1.5+/-0.14mm

| ADD PART NUMBERS |            | QUALITY SYMBOLS | GENERAL TOLERANCES (UNLESS SPECIFIED)                |      | DIMENSION STYLE   |            | SCALE                      | DESIGN UNITS  | THIRD ANGLE PROJECTION  |  |
|------------------|------------|-----------------|--|------|---|------------|----------------------------|---|---|--|
| EC NO:           | DATE       |                 | mm   | INCH | MM ONLY   | 5:1        | METRIC                     |   |   |  |
| E2010-0124       | 2009/10/07 | ▽=0<br>▽=0      | 4 PLACES ±---  | ±--- | DRAWN BY  | DATE       | TITLE                      | <b>RAST 2.5 APPLI-MATE<br/>VERTICAL MALE HEADER<br/>5MM PITCH</b> |   |  |
| DRWN:TTOURISH    | 2009/10/08 |                 | 3 PLACES ±0.05                                       | ±--- | TTOURISH  | 2008/03/18 |                            |   |   |  |
| CHKD:BRUTLE      | 2009/10/08 |                 | 2 PLACES ±0.10                                       | ±--- | CHECKED BY  | DATE       |                            |   |   |  |
| APPR:BMAGUIRE    | 2009/10/08 |                 | 1 PLACE ±0.20  | ±--- | BRUTLE  | 2008/03/18 |                            |   |   |  |
|                  |            |                 | ANGULAR ± 2 °  |      | APPROVED BY   | DATE       |                            |   |   |  |
|                  |            |                 | DRAFT WHERE APPLICABLE MUST REMAIN WITHIN DIMENSIONS |      | BMAGUIRE  | 2008/03/18 | <b>MOLEX INCORPORATED</b>  |   | MATERIAL NO. <b>SEE SHEET 2</b><br>DOCUMENT NO. <b>SD-93071-001</b> |  |
|                  |            |                 |  |      | SIZE <b>A2</b><br>THIS DRAWING CONTAINS INFORMATION THAT IS PROPRIETARY TO MOLEX INCORPORATED AND SHOULD NOT BE USED WITHOUT WRITTEN PERMISSION |            | SHEET NO.<br><b>1 OF 2</b> |   |   |  |

| 2 CIRCUIT      |                       |                        |               |       |                |
|----------------|-----------------------|------------------------|---------------|-------|----------------|
| MOLEX PART NO. | BLOCKED POSITION KEYS | TERMINAL VOID POSITION | CONFIGURATION | LATCH | CCT 1 POSITION |
| 93071-0001     | NONE                  | 2                      |               | YES   | STANDARD       |
| 93071-0002     | d                     | 2                      |               | YES   | STANDARD       |
| 93071-0003     | b                     | 2                      |               | YES   | STANDARD       |
| 93071-0004     | b d                   | 2                      |               | YES   | STANDARD       |
| 93071-0005     | a c                   | 2                      |               | YES   | STANDARD       |
| 93071-0006     | a d                   | 2                      |               | YES   | STANDARD       |
| 93071-0007     | a                     | 2                      |               | YES   | STANDARD       |
| 93071-0008     | a b                   | 2                      |               | YES   | STANDARD       |
| 93071-0009     | b c                   | 2                      |               | YES   | STANDARD       |
| 93071-0010     | c d                   | 2                      |               | YES   | STANDARD       |
| 93071-0011     | a b c                 | 2                      |               | YES   | STANDARD       |
| 93071-0012     | a c d                 | 2                      |               | YES   | STANDARD       |
| 93071-0013     | b c d                 | 2                      |               | YES   | STANDARD       |
| 93071-0014     | ALL                   | 2                      |               | YES   | STANDARD       |

| 3 CIRCUIT      |                       |                        |               |       |                |
|----------------|-----------------------|------------------------|---------------|-------|----------------|
| MOLEX PART NO. | BLOCKED POSITION KEYS | TERMINAL VOID POSITION | CONFIGURATION | LATCH | CCT 1 POSITION |
| 93071-1001     | NONE                  | 2, 4                   |               | YES   | STANDARD       |
| 93071-1002     | a c d e               | 2, 4                   |               | YES   | STANDARD       |
| 93071-1003     | b c d e               | 2, 4                   |               | YES   | STANDARD       |
| 93071-1004     | c                     | 2, 4                   |               | YES   | STANDARD       |
| 93071-1005     | d e f                 | 2, 4                   |               | YES   | STANDARD       |

| 4 CIRCUIT      |                       |                        |               |       |                |
|----------------|-----------------------|------------------------|---------------|-------|----------------|
| MOLEX PART NO. | BLOCKED POSITION KEYS | TERMINAL VOID POSITION | CONFIGURATION | LATCH | CCT 1 POSITION |
| 93071-2001     | NONE                  | 2, 4, 6                |               | YES   | STANDARD       |
| 93071-2002     | b c d e f h           | 2, 4, 6                |               | YES   | STANDARD       |
| 93071-2003     | b c d e f g           | 2, 4, 6                |               | YES   | STANDARD       |
| 93071-2004     | b c d f               | 2, 4, 6                |               | YES   | STANDARD       |

| 5 CIRCUIT      |                       |                        |               |       |                |
|----------------|-----------------------|------------------------|---------------|-------|----------------|
| MOLEX PART NO. | BLOCKED POSITION KEYS | TERMINAL VOID POSITION | CONFIGURATION | LATCH | CCT 1 POSITION |
| 93071-3001     | NONE                  | 2, 4, 6, 8             |               | YES   | STANDARD       |

| 6 CIRCUIT      |                       |                        |               |       |                |
|----------------|-----------------------|------------------------|---------------|-------|----------------|
| MOLEX PART NO. | BLOCKED POSITION KEYS | TERMINAL VOID POSITION | CONFIGURATION | LATCH | CCT 1 POSITION |
| 93071-4001     | NONE                  | 2, 4, 6, 8, 10         |               | YES   | STANDARD       |

| 7 CIRCUIT      |                       |                        |               |       |                |
|----------------|-----------------------|------------------------|---------------|-------|----------------|
| MOLEX PART NO. | BLOCKED POSITION KEYS | TERMINAL VOID POSITION | CONFIGURATION | LATCH | CCT 1 POSITION |
| 93071-5001     | NONE                  | 2, 4, 6, 8, 10, 12     |               | YES   | STANDARD       |

| 8 CIRCUIT      |                       |                        |               |       |                |
|----------------|-----------------------|------------------------|---------------|-------|----------------|
| MOLEX PART NO. | BLOCKED POSITION KEYS | TERMINAL VOID POSITION | CONFIGURATION | LATCH | CCT 1 POSITION |
| 93071-6001     | NONE                  | 2, 4, 6, 8, 10, 12, 14 |               | YES   | STANDARD       |

|   |  |                               |  |   |                 |                |                        |                   |                    |                     |                  |                       |                  |   |
|---|--|-------------------------------|--|---|-----------------|----------------|------------------------|-------------------|--------------------|---------------------|------------------|-----------------------|------------------|---|
| SEE SHEET 1<br>EC NO: E2010-0124<br>DRAWN: TOURISH<br>CHKD: BRITTLE<br>APPR: BMAGUIRE | 2009/10/07<br>2009/10/08<br>2009/10/08 | QUALITY SYMBOLS<br>▽=0<br>▽=0 | GENERAL TOLERANCES (UNLESS SPECIFIED)                | DIMENSION STYLE   | SCALE           | DESIGN UNITS   | THIRD ANGLE PROJECTION |                   |                    |                     |                  |                       |                  |   |
|   |  |                               | mm   | INCH  | 5:1             | METRIC         |                        |                   |                    |                     |                  |                       |                  |   |
|   |  |                               | 4 PLACES ± 0.05                                      | 3 PLACES ± 0.10   | 2 PLACES ± 0.20 | 1 PLACE ± 0.20 | ANGULAR ± 2°           | DRAWN BY: TOURISH | DATE: 2008/03/18   | CHECKED BY: BRITTLE | DATE: 2008/03/18 | APPROVED BY: BMAGUIRE | DATE: 2008/03/18 | TITLE: RAST 2.5 APPLI-MATE VERTICAL MALE HEADER 5MM PITCH |
|   |  |                               | DRAFT WHERE APPLICABLE MUST REMAIN WITHIN DIMENSIONS |   |                 | SEE CHARTS     | MATERIAL NO.           | DOCUMENT NO.      | MOLEX INCORPORATED |                     |                  |                       |                  |   |
|   |  |                               | SIZE 1   | THIS DRAWING CONTAINS INFORMATION THAT IS PROPRIETARY TO MOLEX INCORPORATED AND SHOULD NOT BE USED WITHOUT WRITTEN PERMISSION |                 |                | SHEET NO. 2 OF 2       |                   |                    |                     |                  |                       |                  |   |