



Data Sheet



Product Category: IF SAW Filter

Part Number	Package	Application	Last Modified
821-IF140.0M-D	20.0 x 9.8mm SMD	IF SAW Filter	Mar. 10, 2007

TYPE :
140.0MHz IF SAW Filter



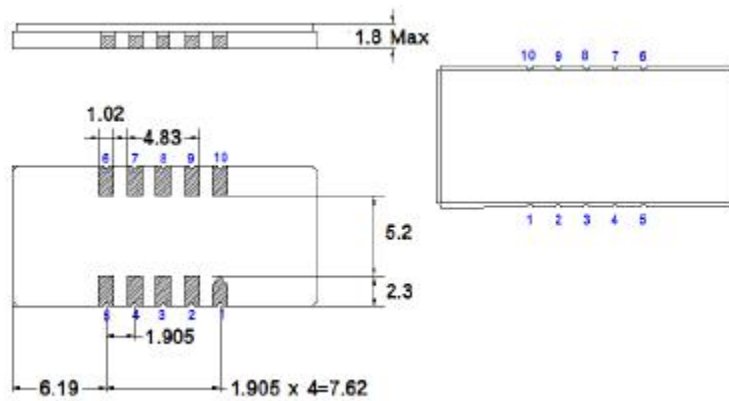
PART NUMBER :
821-IF140.0M-D

OPERATING CONDITIONS / ELECTRICAL CHARACTERISTICS

PARAMETERS	Minimum	Typical	Maximum	Units
Center Frequency	139.9	140.0	140.1	MHz
Insertion Loss	-	22.0	25.0	dB
Source Impedance (single ended)*	-	50	-	ohm
Load Impedance (single ended)*	-	50	-	ohm
Bandwidth -1.0 dB	6.8	7.1	-	MHz
Bandwidth -3.0 dB	7.3	7.6	-	MHz
Bandwidth -40.0 dB	-	9.5	10.0	MHz
Amplitude Ripple	-	0.7	1.0	dBp-p
Lower Sidelobe	-	52	25.0	dB
Upper Sidelobe	-	52	25.0	dB
Group Delay Variation	-	50	100	nsec
Absolute Delay @ Fo	-	2.84	-	µsec
Temperature Coefficient	-	-23	-	ppm/°C

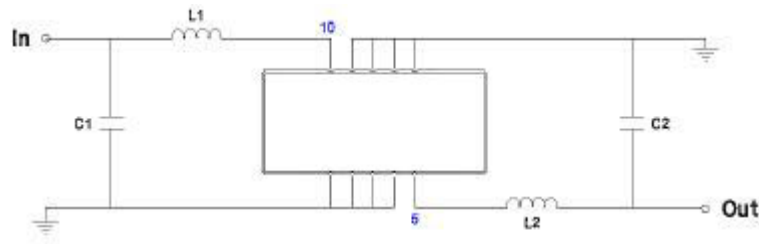
*With Matching Network(ref. Testing Environment Circuit as shown below).
Those impedances could be modified with different impedance values and/or structures, if necessary.

PACKAGE OUTLINE (mm)



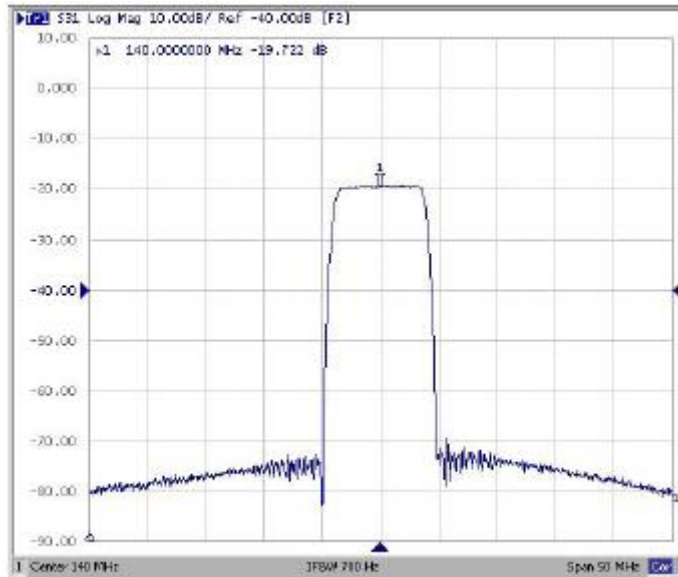
PIN Descriptions: IN-10, OUT-5, GROUND-1,2,3,4,6,7,8,9

TEST FIXTURE



Test Fixture & Values	
Input	L1=39nH , C1=43pF
Output	L2=39nH , C2=43pF

Frequency Response



Oscilent Corporation - CALL **949.252.0522**

Part No.: 821-IF140.0M-D

18195 East McDermott Street , Building D , Irvine , CA 92614 , USA
 Fax: 949.252.0599 , E-Mail: Sales@Oscilent.com