

**PLEASE CHECK WWW.MOLEX.COM FOR LATEST PART INFORMATION**

**Part Number:** [5023510400](#)  
**Status:** **Active**  
**Overview:** [duraclik](#)  
**Description:** 2.00mm (.079") Pitch DuraClik™ Wire-to-Board Receptacle Housing, Single Row, 4 Circuits

**Documents:**

[3D Model](#) [Product Specification PS-502351-001 \(PDF\)](#)  
[Drawing \(PDF\)](#) [RoHS Certificate of Compliance \(PDF\)](#)

**General**

Product Family Crimp Housings  
 Series [502351](#)  
 Overview [duraclik](#)  
 Product Name DuraClik™

**Physical**

Circuits (maximum) 4  
 Color - Resin White  
 Gender Receptacle  
 Glow-Wire Compliant No  
 Keying to Mating Part Yes  
 Lock to Mating Part Yes  
 Number of Rows 1  
 Packaging Type Bag  
 Panel Mount No  
 Pitch - Mating Interface (in) 0.079 In  
 Pitch - Mating Interface (mm) 2.00 mm  
 Polarized to Mating Part Yes  
 Temperature Range - Operating -40°C to +105°C

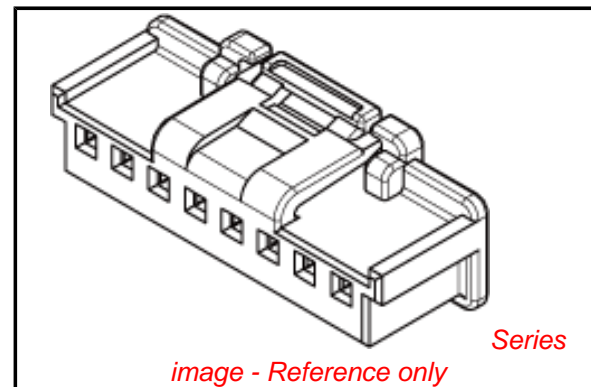
**Electrical**

Current - Maximum per Contact 3A

**Material Info**

**Reference - Drawing Numbers**

Packaging Specification [PK-502351-001](#)  
 Product Specification [PS-502351-001](#), [RPS-502351-001](#)  
 Sales Drawing [SD-502351-001](#)



*image - Reference only*

**EU RoHS**

**ELV and RoHS  
 Compliant**  
**REACH SVHC  
 Contains SVHC: No**  
**Halogen-Free  
 Status**

**China RoHS**



**Need more information on product  
 environmental compliance?**

Email [productcompliance@molex.com](mailto:productcompliance@molex.com)  
 For a multiple part number RoHS Certificate of  
 Compliance, [click here](#)

Please visit the [Contact Us](#) section for any  
 non-product compliance questions.

**Search Parts in this Series**

[502351Series](#)

**Mates With**

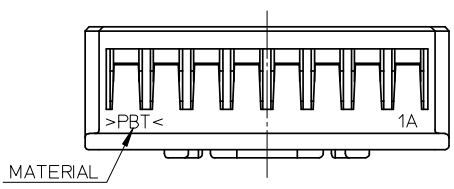
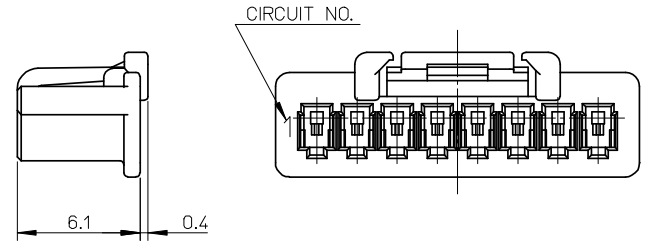
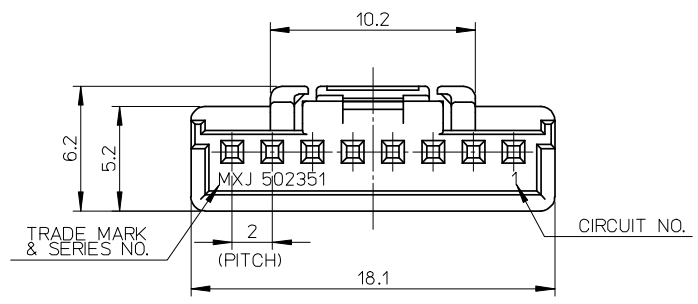
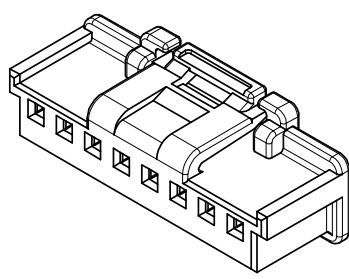
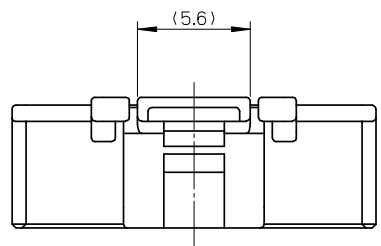
[502352](#) PCB Header

**Use With**

[50212](#) Crimp Terminal . [50372](#) Crimp  
 Terminal

NOTES

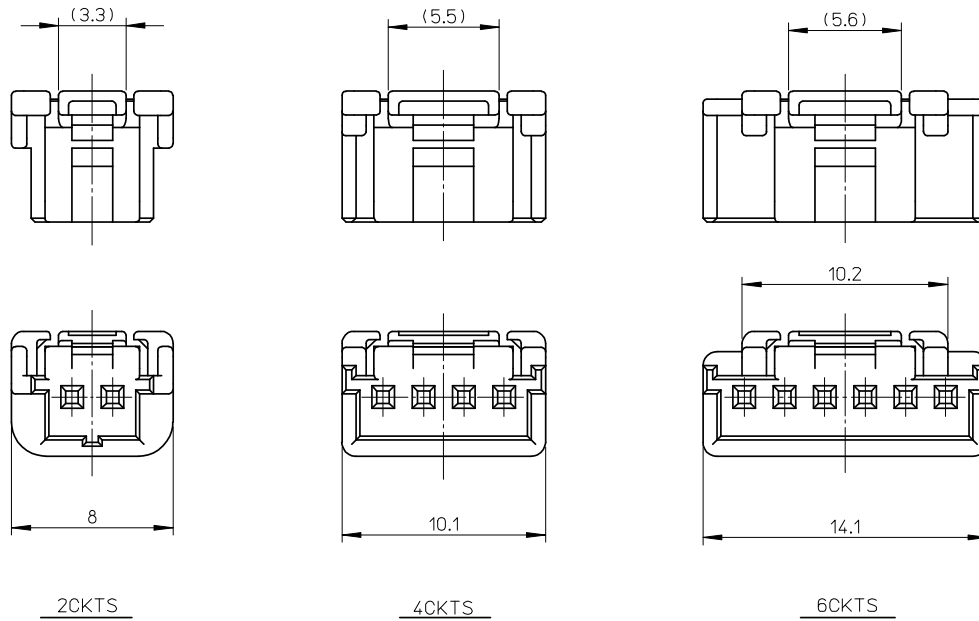
- 1. 材質: PBT  
MATERIAL: PBT
- 2. 色: 白  
COLOR: WHITE
- 3. 適合端子: 50212, 50372シリーズ  
APPLICABLE TERMINAL: 50212, 50372 SERIES
- 4. 嵌合相手: 502352シリーズ  
MATES WITH: 502352 SERIES
- 5. ELV及びRoHS適合品  
ELV AND RoHS COMPLIANT



8CKTS

|              |      |
|--------------|------|
| 502351-0800  | 8    |
| 502351-0600  | 6    |
| 502351-0400  | 4    |
| 502351-0200  | 2    |
| MATERIAL NO. | CKTS |

|   |                                       |  |                            |   |   |                        |
|---|---------------------------------------|--|----------------------------|---|---|------------------------|
| RELEASED<br>EC NO: JTR2008-0007<br>DRWN: SHSHIBATA 2008/01/23<br>CHKD: HKOMATSU 2008/01/23<br>APPR: AKANESHIGE 2008/01/23 | GENERAL TOLERANCES (UNLESS SPECIFIED) |  | DIMENSION STYLE<br>MM ONLY | SCALE<br>4:1  | DESIGN UNITS<br>METRIC  | THIRD ANGLE PROJECTION |
|   | 10 UNDER                              | ±0.20  | DRAWN BY<br>SHSHIBATA      | DATE<br>2007/12/18  | TITLE<br>2.0MM PITCH<br>WIRE TO BOARD CONN.<br>RECEPTACLE HOUSING<br>MOLEX INCORPORATED<br>DOCUMENT NO. SD-502351-001<br>SHEET NO. 1 OF 2 |                        |
|   | 10 OVER 30 UNDER                      | ±0.25  | CHECKED BY<br>HKOMATSU     | DATE<br>2007/12/18  |   |                        |
|   | 30 OVER                               | ±0.30  | APPROVED BY<br>AKANESHIGE  | DATE<br>2007/12/18  |   |                        |
| ANGULAR ±3 °  |                                       | MATERIAL NO.<br>SEE CHART                            | DATE                       |   |   |                        |
| 0   | DESCRIPTION                           | DRAFT WHERE APPLICABLE MUST REMAIN WITHIN DIMENSIONS |                            | THIS DRAWING CONTAINS INFORMATION THAT IS PROPRIETARY TO MOLEX INCORPORATED AND SHOULD NOT BE USED WITHOUT WRITTEN PERMISSION |   |                        |



|  |                                       |              |   |                               |   |                        |
|--|---------------------------------------|--------------|---|-------------------------------|---|------------------------|
| RELEASED<br>EC NO: JTR2008-0007<br>DRWN: SHSHIBATA 2008/01/23<br>CHK'D: HKOMATSU 2008/01/23<br>APPR: AKANESHIGE 2008/01/23 | GENERAL TOLERANCES (UNLESS SPECIFIED) |              | DIMENSION STYLE<br>MM ONLY  | SCALE<br>4:1                  | DESIGN UNITS<br>METRIC                                      | THIRD ANGLE PROJECTION |
|  | 10 UNDER                              | ±0.20        | DRAWN BY<br>SHSHIBATA   | DATE<br>2007/12/18            | TITLE<br>2.0MM PITCH WIRE TO BOARD CONN. RECEPTACLE HOUSING |                        |
|  | 10 OVER 30 UNDER                      | ±0.25        | CHECKED BY<br>HKOMATSU  | DATE<br>2007/12/18            | MOLEX INCORPORATED  |                        |
|  | 30 OVER                               | ±0.30        | APPROVED BY<br>AKANESHIGE   | DATE<br>2007/12/18            |   |                        |
| ANGULAR ±3 °   |                                       | MATERIAL NO. | SEE CHART   | DOCUMENT NO.<br>SD-502351-001 | SHEET NO.<br>2 OF 2   |                        |
| DRAFT WHERE APPLICABLE MUST REMAIN WITHIN DIMENSIONS   |                                       | SIZE<br>A3   | THIS DRAWING CONTAINS INFORMATION THAT IS PROPRIETARY TO MOLEX INCORPORATED AND SHOULD NOT BE USED WITHOUT WRITTEN PERMISSION |                               |   |                        |