

**PLEASE CHECK WWW.MOLEX.COM FOR LATEST PART INFORMATION**

**Part Number:** [0355191605](#)  
**Status:** **Active**  
**Description:** 2.29/6.35mm (.090/.250") Tab Hybrid Wire-to-Wire Housing, Female, 16 Circuits

**Documents:**

[Drawing \(PDF\)](#) [RoHS Certificate of Compliance \(PDF\)](#)  
[Product Specification PS-35519-001 \(PDF\)](#)

**General**

Product Family	Crimp Housings
Series	35519
Comments	With option #3 polarization
Product Name	N/A

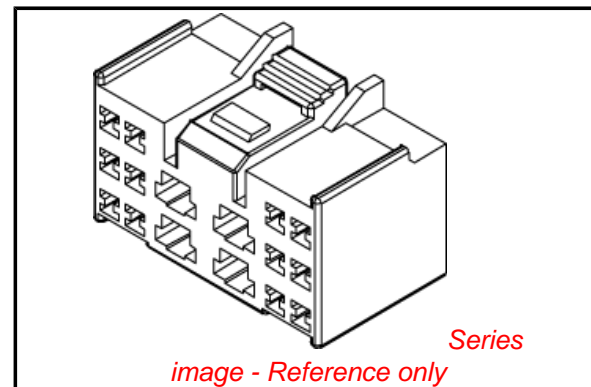
**Physical**

Circuits (maximum)	16
Color - Resin	Gray (Light)
Gender	Female
Glow-Wire Compliant	No
Material - Resin	Polyester
Number of Rows	3
Packaging Type	Bag
Panel Mount	No
Pitch - Mating Interface (in)	0.165 In, 0.374 In
Pitch - Mating Interface (mm)	4.20 mm, 9.50 mm
Temperature Range - Operating	-40°C to +120°C

**Material Info**

**Reference - Drawing Numbers**

Product Specification	PS-35519-001
Sales Drawing	SD-35519-160*



**EU RoHS**

**ELV and RoHS  
Compliant**  
**REACH SVHC**  
 Not Reviewed  
**Halogen-Free  
Status**

**China RoHS**



**Need more information on product  
environmental compliance?**

Email [productcompliance@molex.com](mailto:productcompliance@molex.com)  
 For a multiple part number RoHS Certificate of Compliance, [click here](#)

Please visit the [Contact Us](#) section for any non-product compliance questions.

**Search Parts in this Series**

[35519Series](#)

**Mates With**

[35522|35523](#)

**Use With**

[35407](#) , [35427](#)

DO NOT SCALE DRAWING DIMENSION IN METRIC

DWG. NO. SD 35519-160\*

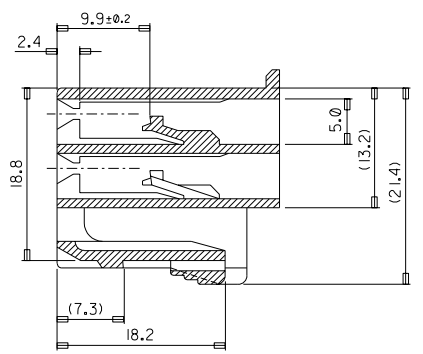
SIMILAR ITEM

PROJECT NO. KOR 96-038

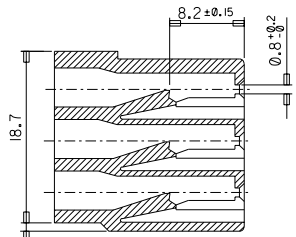
C

B

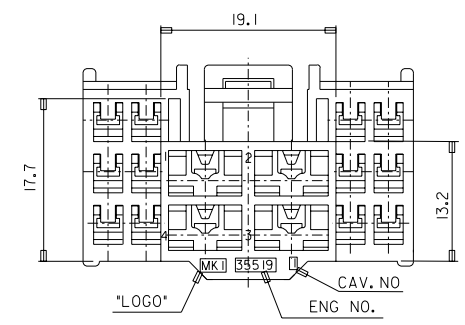
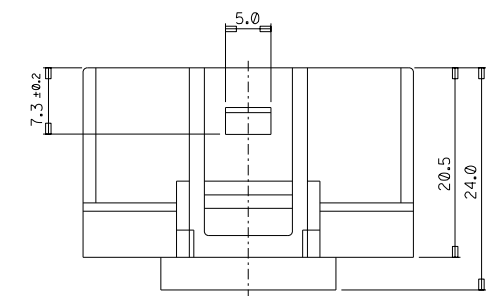
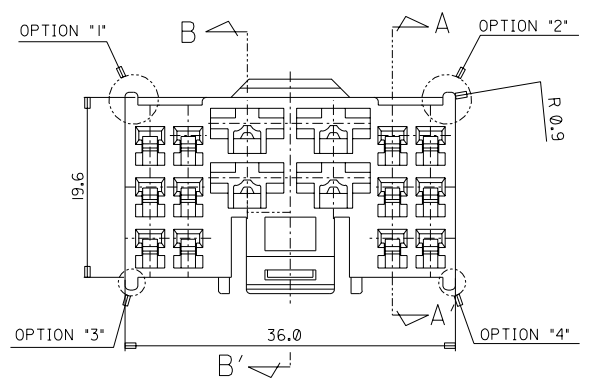
REV



SECTION B-B'

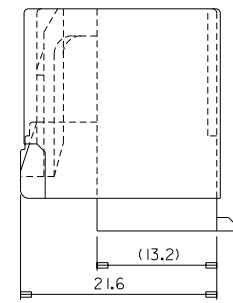


SECTION A-A'



\*TABLE 1

PART NO.	COLOR	REMARKS
E 35519-1600	NATERAL	WITH OPTION "2"
E 35519-1601	BLACK	WITH OPTION "1"
E 35519-1603	YELLOW	WITH OPTION "4"
E 35519-1605	GRAY	WITH OPTION "3"



NOTE

1. MATERIAL : POLYESTER (P.B.T)
2. COLOR : SEE TABLE 1.
3. APPLICABLE TERMINAL : 35407-6\*02/  
35427-9\*\*\*
4. APPLICABLE HOUSING : 35522-240\*/35523-160\*.
5. PRODUCT SPECIFICATION : PS-35519-0001.

REVISED EC NO. KOR 1998-0116 DRAWN: C.Y. CHO CHK: B.K. CHOI APPR: C.W. LEE	DESCRIPTION	QUALITY SYMBOLS	GENERAL TOLERANCES: (UNLESS SPECIFIED)	SCALE	DESIGN UNITS <input checked="" type="checkbox"/> mm <input type="checkbox"/> INCH	THIRD ANGLE PROJECTION	DIMENSIONS: <input type="checkbox"/> mm <input type="checkbox"/> INCH <input checked="" type="checkbox"/> mm ONLY	SHT	REV	
		MAJOR CRITICAL C	4 PLACES ±. INCH 3 PLACES ±. INCH 2 PLACES ±0.20 INCH 1 PLACE ±0.30 INCH	ANGULAR: ± 1 °	DRAWN BY & DATE C.Y. CHO 1998.05.15	TITLE: 090/250 HYBRID FEMALE HOUSING (16P)				
B	REV		DRAFT WHERE APPLICABLE MUST REMAIN WITHIN DIMENSIONS	APPROVED BY & DATE C.W. LEE 1998.05.15	CAD FILENAME SD35519.DGN	MATERIAL NO. SD 35519-160*	DRAWING NO. SD 35519-160*	SHEET NO. 1/1		
THIS DRAWING CONTAINS INFORMATION THAT IS PROPRIETARY TO MOLEX INCORPORATED AND SHOULD NOT BE USED WITHOUT WRITTEN PERMISSION.								SIZE B		