

PLEASE CHECK WWW.MOLEX.COM FOR LATEST PART INFORMATION

Part Number: [0470541000](#)
Status: **Active**
Overview: [kk](#)
Description: 2.54mm(.100") Pitch 4 Pin KK® Housing, with Polarization Rib

Documents:

[3D Model](#) [Product Specification PS-47053-001 \(PDF\)](#)
[Drawing \(PDF\)](#) [RoHS Certificate of Compliance \(PDF\)](#)

General

Product Family Crimp Housings
 Series [47054](#)
 Overview [kk](#)
 Product Name KK®

Physical

Circuits (maximum) 4
 Color - Resin Ivory
 Gender Female
 Glow-Wire Compliant No
 Lock to Mating Part Yes
 Material - Resin Nylon
 Number of Rows 1
 Packaging Type Bag
 Panel Mount No
 Pitch - Mating Interface (in) 0.100 In
 Pitch - Mating Interface (mm) 2.54 mm
 Pitch - Term. Interface (in) 0.100 In
 Pitch - Term. Interface (mm) 2.54 mm
 Polarized to Mating Part Yes
 Stackable No
 Temperature Range - Operating 0°C to +75°C

Electrical

Current - Maximum per Contact 4A

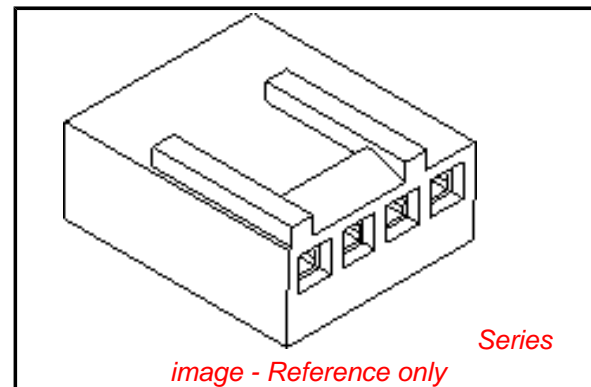
Solder Process Data

Duration at Max. Process Temperature (seconds) 5
 Max. Cycles at Max. Process Temperature 1
 Process Temperature max. C 230

Material Info

Reference - Drawing Numbers

Product Specification PS-47053-001
 Sales Drawing SD-47054-001



EU RoHS

**ELV and RoHS
 Compliant**
**REACH SVHC
 Contains SVHC: No**
**Halogen-Free
 Status**

China RoHS



**Need more information on product
 environmental compliance?**

Email productcompliance@molex.com
 For a multiple part number RoHS Certificate of
 Compliance, [click here](#)

Please visit the [Contact Us](#) section for any
 non-product compliance questions.

Search Parts in this Series

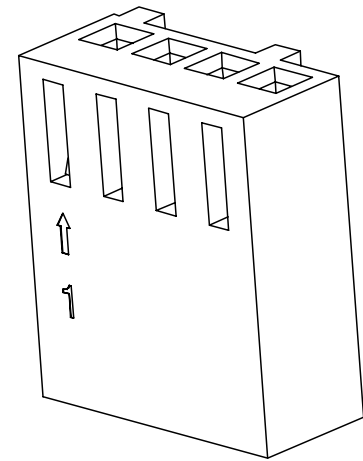
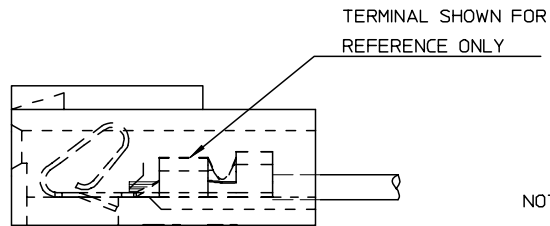
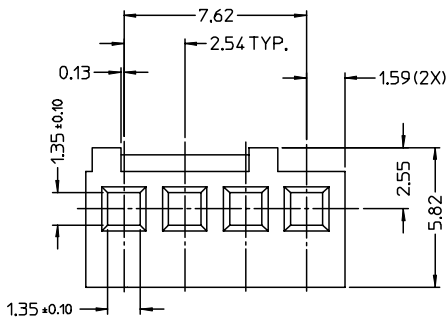
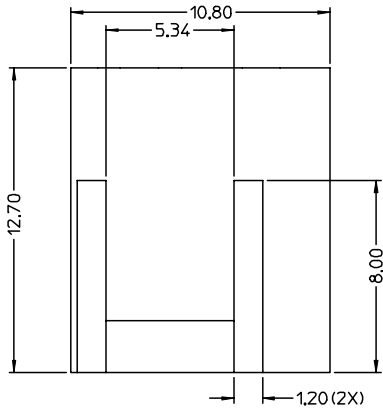
[47054Series](#)

Mates With

[47053](#) 2.54mm (.100") Pitch KK® Vertical
 Header, with Friction Lock

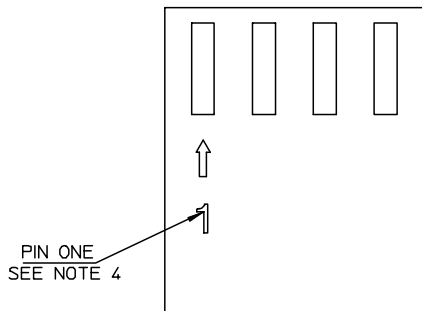
Use With

[2759](#) KK® Crimp Terminal, 22-30 AWG



NOTES:

1. MATERIAL: NYLON, UL94V-0, COLOR: IVORY.
2. HOUSING TO BE USED WITH CRIMP TYPE TERMINAL NO.2759,22-30 GAUGE WIRE WITH 1.57 DIA. MAXIMUM WIRE INSULATION.
3. THIS HOUSING CONFORMS TO MOLEX PRODUCT SPEC. NO. PS-47053-001.
4. CIRCUIT NO. "1" TO APPEAR ON PARTS.



NEW PART EC NO: DRWN:RZHANG 2004/04/28 CHKD:HJYIN 2004/06/04 APPR:SHUANG 2004/06/04	QUALITY SYMBOLS ▽ = 0 ▽ = 0	GENERAL TOLERANCES (UNLESS SPECIFIED)		SCALE 1:1	DESIGN UNITS METRIC	THIRD ANGLE PROJECTION	REVISE ON CAD ONLY	
		4 PLACES ± --- ± ---	3 PLACES ± --- ± ---	DIMENSION STYLE MM ONLY		TITLE 4 PIN HOUSING FOR CRIMP TERMINALS		
		2 PLACES ± 0.13 ± ---	1 PLACE ± 0.25 ± ---	DRAWN BY RZHANG	DATE 2003/10/31	MOLEX MOLEX INCORPORATED		
		ANGULAR ± 3 °		CHECKED BY HJYIN	DATE 2003/10/31	MATERIAL NO. 47054-1000	DOCUMENT NO. SD-47054-001	SHEET NO. 1 OF 1
A	REV	DRAFT WHERE APPLICABLE MUST REMAIN WITHIN DIMENSIONS		THIS DRAWING CONTAINS INFORMATION THAT IS PROPRIETARY TO MOLEX INCORPORATED AND SHOULD NOT BE USED WITHOUT WRITTEN PERMISSION			B	