

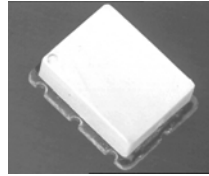
E-Series Surface Mount Mixer

80 – 2500 MHz



Features

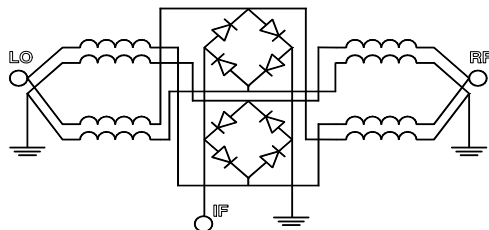
- LO Power +17 dBm
- Up to +14 dBm RF
- Surface Mount



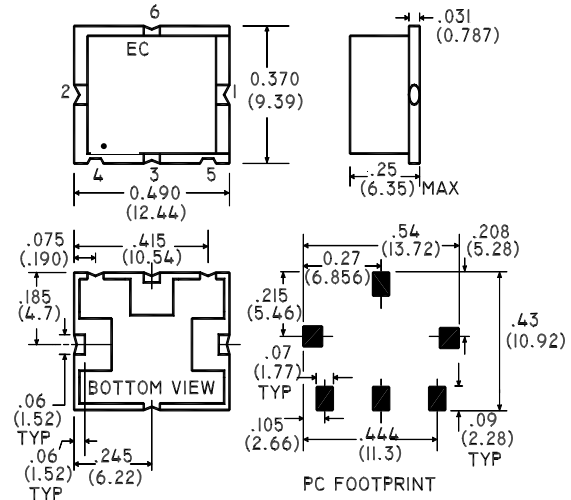
Description

M/A-COM's ESMD-C50H is a Low Cost, Passive Double Double Balanced Mixer. Constructed using very broad band ferrite balun transformers and matched silicon schottky diodes, it's performance is especially suited to high dynamic range receivers. Given it's high 1dB compression point, the ESMD-C50H is also suitable for Transmitter upconversion at any frequency up to 2.5GHz.

Schematic



SM-2 Package



Part Number	Packaging
ESMD-C50H	Tube
ESMD-C50HTR	Tape and Reel

Electrical Specifications @ +25°C

Parameter	Units	Minimum	Typical	Maximum	Mean (x)	Sigma (σ)
Frequency Range	80 - 2500 MHz	—	—	—	—	—
IF 1.0 dB Bandwidth = DC - 1000 MHz	—	—	—	—	—	—
Conversion Loss	80 - 1000 MHz	—	—	7.5	6.10	0.15
	1000 - 2500 MHz	—	—	9.0	7.34	0.29
L - R Isolation	80 - 1000 MHz	25.0	33.5	—	—	—
	1000 - 2500 MHz	20.0	28.9	—	—	—
L - I Isolation	80 - 1000 MHz	26.0	31.5	—	—	—
	1000 - 2500 MHz	13.5	17.4	—	—	—
R - I Isolation	80 - 1000 MHz	20.0	26.9	—	—	—
	1000 - 2500 MHz	20.0	25.9	—	—	—
LO VSWR	80 - 1000 MHz	—	1.42	2.0	—	—
	1000 - 2500 MHz	—	1.63	2.5	—	—
RF VSWR	80 - 1000 MHz	—	1.72	2.8	—	—
	1000 - 2500 MHz	—	1.71	2.4	—	—
IF VSWR	DC - 600 MHz	—	2.55	3.2	—	—
Input IP3	200 - 1000 MHz	21.0	27.0	—	—	—
	1000 - 2500 MHz	18.0	25.0	—	—	—
Input 1dB Compression	dBm	—	+14.0	—	—	—

Test Conditions: LO Drive = +17dBm, IF frequency = 70MHz. Mean and Sigma calculated at 900MHz & 1800MHz.

V2.00 S 1254 D

ADVANCED: Data Sheets contain information regarding a product M/A-COM Technology Solutions is considering for development. Performance is based on target specifications, simulated results, and/or prototype measurements. Commitment to develop is not guaranteed.

PRELIMINARY: Data Sheets contain information regarding a product M/A-COM Technology Solutions has under development. Performance is based on engineering tests. Specifications are typical. Mechanical outline has been fixed. Engineering samples and/or test data may be available. Commitment to produce in volume is not guaranteed.

- North America Tel: 800.366.2266 • Europe Tel: +353.21.244.6400
- India Tel: +91.80.4155721 • China Tel: +86.21.2407.1588

Visit www.macomtech.com for additional data sheets and product information.

Absolute Maximum Ratings

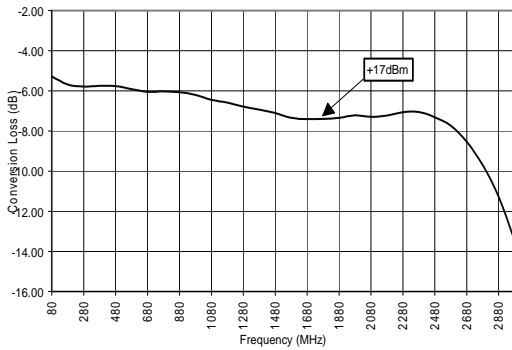
Parameter	Absolute Maximum
RF Input Power	+23dBm
LO Drive Power	+23 dBm
Operating/Storage Temperature	-40°C to +85°C

Pin Configuration

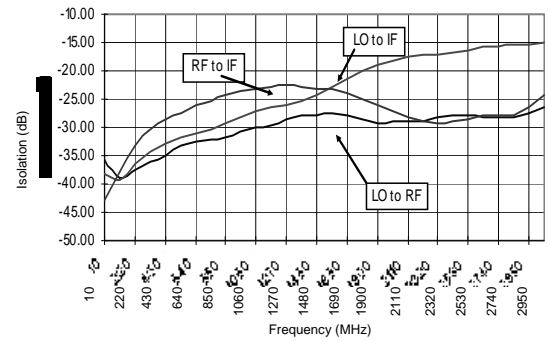
Function	Pin No.
RF	1
LO	2
IF	3
Ground	4,5,6

Typical Performance @ +25°C

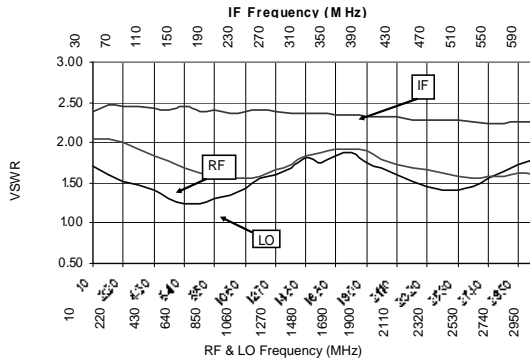
Conversion Loss



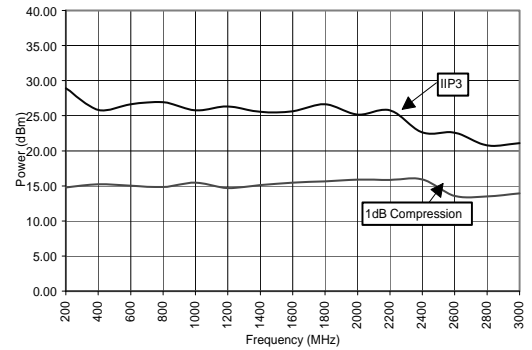
Isolation



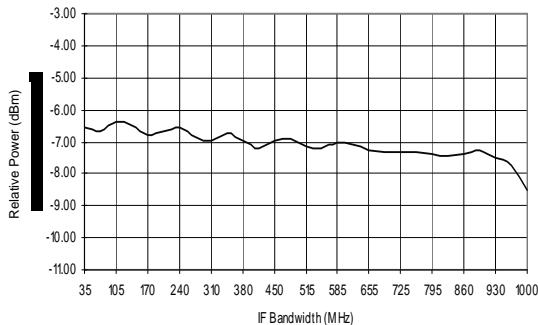
VSWR



IP3 and 1dB Compression



IF Bandwidth



Note: Conversion Loss measured with fixed IF frequency of 70MHz.
All measurements made with input power of +17dBm.

V2.00 S 1254 D

ADVANCED: Data Sheets contain information regarding a product M/A-COM Technology Solutions is considering for development. Performance is based on target specifications, simulated results, and/or prototype measurements. Commitment to develop is not guaranteed.
PRELIMINARY: Data Sheets contain information regarding a product M/A-COM Technology Solutions has under development. Performance is based on engineering tests. Specifications are typical. Mechanical outline has been fixed. Engineering samples and/or test data may be available. Commitment to produce in volume is not guaranteed.

• **North America** Tel: 800.366.2266 • **Europe** Tel: +353.21.244.6400
• **India** Tel: +91.80.4155721 • **China** Tel: +86.21.2407.1588
Visit www.macomtech.com for additional data sheets and product information.

M/A-COM Technology Solutions Inc. and its affiliates reserve the right to make

Spurious Table: 1800MHz

(In dBc below IF, assuming down conversion)

		nf _{LO} - mf _{RF}				
	0	X	-6	12	21	13
	1	29	0	35	18	42
RF	2	64	58	58	51	72
(n)	3	76	80	78	76	73
	4	83	85	85	82	85.34
		0	1	2	3	4

LO (m)

RF = 1842.50 MHz, -5dBm
 LO = 1772.50 MHz, +17dBm
 IF = 70 MHz

Spurious Table: 900MHz

(In dBc below IF, assuming down conversion)

		nf _{LO} - mf _{RF}				
	0	X	2	14	12	29
	1	20	0	37	12	39
RF	2	25	26	38	27	32
(n)	3	46	41	44	43	44
	4	57	56	54	55	57
		0	1	2	3	4

LO (m)

RF = 970 MHz, -5dBm
 LO = 900 MHz, +17dBm
 IF = 70 MHz

Spurious Table: 1900MHz

(In dBc below IF, assuming down conversion)

		nf _{LO} - mf _{RF}				
	0	X	-8	21	16	19
	1	24	0	39	17	50
RF	2	29	32	29	22	31
(n)	3	51	46	51	41	50
	4	52	55	55	52	55
		0	1	2	3	4

LO (m)

RF = 1960 MHz, -5dBm
 LO = 1890 MHz, +17dBm
 IF = 70 MHz

V2.00 S 1254 D

ADVANCED: Data Sheets contain information regarding a product M/A-COM Technology Solutions is considering for development. Performance is based on target specifications, simulated results, and/or prototype measurements. Commitment to develop is not guaranteed.

PRELIMINARY: Data Sheets contain information regarding a product M/A-COM Technology Solutions has under development. Performance is based on engineering tests. Specifications are typical. Mechanical outline has been fixed. Engineering samples and/or test data may be available. Commitment to produce in volume is not guaranteed.

• **North America** Tel: 800.366.2266 • **Europe** Tel: +353.21.244.6400
 • **India** Tel: +91.80.4155721 • **China** Tel: +86.21.2407.1588

Visit www.macomtech.com for additional data sheets and product information.

M/A-COM Technology Solutions Inc. and its affiliates reserve the right to make