

PLEASE CHECK WWW.MOLEX.COM FOR LATEST PART INFORMATION

Part Number: [0025021048](#)
Status: **Active**
Description: 2.54mm (.100") Pitch C-Grid® Header, Dual Row, Shrouded, with PC Slot and Guide Ear, 48 Circuits, 0.76µm (30µ") Gold (Au) Selective Plating

Documents:

3D Model	Product Specification PS-70204 (PDF)
Packaging Specification (PDF)	RoHS Certificate of Compliance (PDF)
Drawing (PDF)	

Agency Certification

CSA	LR19980
UL	E29179

General

Product Family	PCB Headers
Series	70204
Application	Board-to-Board
Product Name	C-Grid®

Physical

Breakaway	No
Circuits (Loaded)	48
Circuits (maximum)	48
Durability (mating cycles max)	50
Flammability	94V-0
Glow-Wire Compliant	No
Guide to Mating Part	Yes
Lock to Mating Part	None
Material - Plating Mating	Gold
Number of Rows	2
Orientation	Vertical
PC Tail Length (in)	0.110 In
PC Tail Length (mm)	2.79 mm
PCB Locator	No
PCB Retention	None
Packaging Type	Tray
Pitch - Mating Interface (in)	0.100 In
Pitch - Mating Interface (mm)	2.54 mm
Plating min: Mating (µin)	30
Plating min: Mating (µm)	0.76
Polarized to Mating Part	Yes
Polarized to PCB	No
Shrouded	Fully
Stackable	No
Temperature Range - Operating	-40°C to +105°C
Termination Interface: Style	Through Hole

Electrical

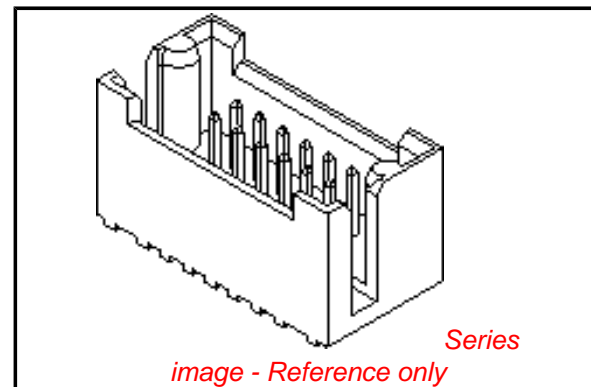
Current - Maximum per Contact	3A
Voltage - Maximum	250V

Solder Process Data

Lead-free Process Capability	Wave Capable (TH only)
------------------------------	------------------------

Material Info

Old Part Number	70204-0343
-----------------	------------



EU RoHS

ELV and RoHS Compliant
REACH SVHC
 Not Reviewed
Halogen-Free Status
 Not Reviewed

China RoHS



Need more information on product environmental compliance?

Email productcompliance@molex.com
 For a multiple part number RoHS Certificate of Compliance, [click here](#)

Please visit the [Contact Us](#) section for any non-product compliance questions.

Search Parts in this Series

[70204Series](#)

Mates With

[71973](#)

Reference - Drawing Numbers

Product Specification
Sales Drawing

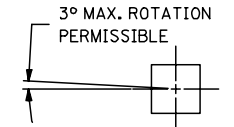
PS-70204
SDA-70204-0321-0384

This document was generated on 03/31/2010

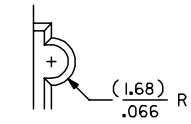
PLEASE CHECK WWW.MOLEX.COM FOR LATEST PART INFORMATION

CKT. SIZE	PART NUMBER	ENG. NUMBER SDA-70204-	DIM. "A"		DIM. "B"		DIM. "C"	
			MM	IN.	MM	IN.	MM	IN.
			08	25-02-1008	0323	7,62	.300	17,78
10	25-02-1010	0324	10,16	.400	20,32	.800	22,86	.900
12	25-02-1012	0325	12,70	.500	22,86	.900	25,40	1.000
14	25-02-1014	0326	15,24	.600	25,40	1.000	32,51	1.100
16	25-02-1016	0327	17,78	.700	27,94	1.100	30,48	1.200
18	25-02-1018	0328	20,32	.800	30,48	1.200	33,02	1.300
20	25-02-1020	0329	22,86	.900	33,02	1.300	35,56	1.400
22	25-02-1022	0330	25,40	1.000	35,56	1.400	38,10	1.500
24	25-02-1024	0331	27,94	1.100	38,10	1.500	40,64	1.600
26	25-02-1026	0332	30,48	1.200	40,64	1.600	43,10	1.700
28	25-02-1028	0333	33,02	1.300	43,10	1.700	45,72	1.800
30	25-02-1030	0334	35,56	1.400	45,72	1.800	48,26	1.900
32	25-02-1032	0335	38,10	1.500	48,26	1.900	50,80	2.000
34	25-02-1034	0336	40,64	1.600	50,80	2.000	53,34	2.100
36	25-02-1036	0337	43,10	1.700	53,34	2.100	55,88	2.200
38	25-02-1038	0338	45,72	1.800	55,88	2.200	58,42	2.300
40	25-02-1040	0339	48,26	1.900	58,42	2.300	60,96	2.400

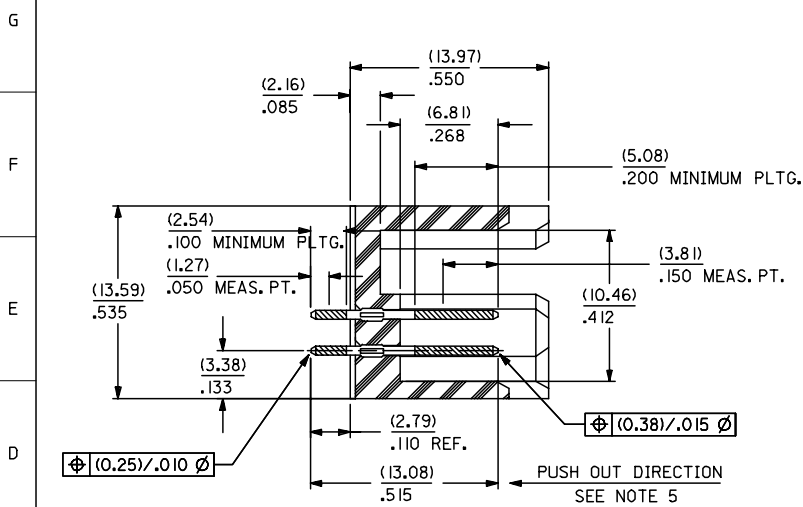
CKT. SIZE	PART NUMBER	ENG. NUMBER SDA-70204-	DIM. "A"		DIM. "B"		DIM. "C"	
			MM	IN.	MM	IN.	MM	IN.
			42	25-02-1042	0340	50,80	2.000	60,96
44	25-02-1044	0341	53,34	2.100	63,50	2.500	66,04	2.600
46	25-02-1046	0342	55,88	2.200	66,04	2.600	68,58	2.700
48	25-02-1048	0343	58,42	2.300	68,58	2.700	71,12	2.800
50	25-02-1050	0344	60,96	2.400	71,12	2.800	73,66	2.900
52	25-02-1052	0345	63,50	2.500	73,66	2.900	76,20	3.000
54	25-02-1054	0346	66,04	2.600	76,20	3.000	78,74	3.100
56	25-02-1056	0347	68,58	2.700	78,74	3.100	81,28	3.200
58	25-02-1058	0348	71,12	2.800	81,28	3.200	83,82	3.300
60	25-02-1060	0349	73,66	2.900	83,82	3.300	86,36	3.400
62	25-02-1062	0350	76,20	3.000	86,36	3.400	88,90	3.500
64	25-02-1064	0351	78,74	3.100	88,90	3.500	91,44	3.600
66	25-02-1066	0352	81,28	3.200	91,44	3.600	93,98	3.700
68	25-02-1068	0353	83,82	3.300	93,98	3.700	96,52	3.800
70	25-02-1070	0354	86,36	3.400	96,52	3.800	99,06	3.900
72	25-02-1072	0355	88,90	3.500	99,06	3.900	101,60	4.000



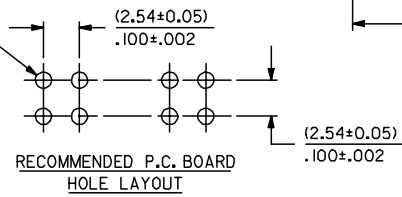
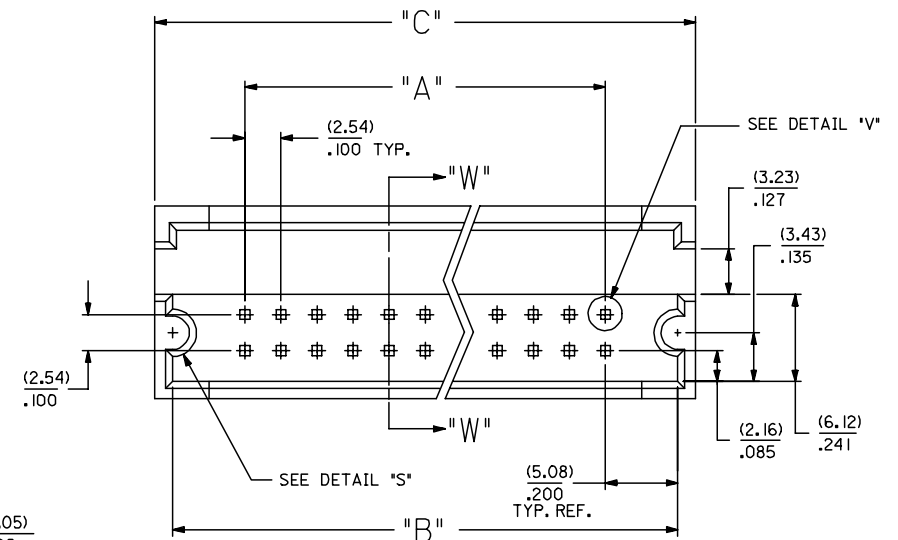
DETAIL "V"
SCALE = 20:1



DETAIL "S"



SECTION W-W



NOTES:

- 1) WAFER MATERIAL: GLASS FILLED NYLON COLOR, BLACK.
- 2) PIN MATERIAL: PHOSPHOR BRONZE ALLOY
- 3) PIN PLATING:
TIP: .000030 MINIMUM GOLD IN SELECTED AREA
TAIL: .000075 MINIMUM TIN IN SELECTED AREA
OVER .000050 NICKEL OVER-ALL.
- *THE PRIMARY SHIPPING CARTON WILL BE LABELED 'COMPLIANT TO RoHS DIRECTIVE 2002/95/EC AND ELV ANNEX II OF DIRECTIVE 2000/53/EC'. CARTONS WITHOUT THIS LABEL MAY CONTAIN PRODUCT WITH LEAD.
- 4) PINS MUST MEET SOLDERABILITY SPEC. NO. 152.
- 5) PIN PUSH-OUT FORCE (1.81 KG.)/4 LBS MINIMUM
- 6) REFER TO P.S. NO. 70204.
- 7) STANDARD PACKAGING PER: PK-70873-0070.

REMOVE 0356-0384 FC NO: UCP2007-0113 DRAWN: JORGAN 2006/08/07 CHKD: MS BARRA 2006/08/16 APPR: SMILLER 2006/08/18	QUALITY SYMBOLS ▽=0 ▽=0	GENERAL TOLERANCES (UNLESS SPECIFIED)	DIMENSION STYLE		SCALE	DESIGN UNITS	THIRD ANGLE PROJECTION
		4 PLACES ± --- ± --- 3 PLACES ± 0.25 ± .010 2 PLACES ± --- ± --- 1 PLACE ± --- ± --- ANGULAR ±1/2°	MM/IN		4:1	INCH	
DRAWN BY DATE JAS 1986/05/20		CHECKED BY DATE EIK 1986/05/20		APPROVED BY DATE WAZ 1986/05/20		TITLE SHROUDED HEADER DUAL ROW W/PCB SLOTS & GUIDE EARS .100 GRID .025 SQ PIN	
MATERIAL NO.		SEE TABLE		DOCUMENT NO.		SHEET NO.	
DRAFT WHERE APPLICABLE MUST REMAIN WITHIN DIMENSIONS		THIS DRAWING CONTAINS INFORMATION THAT IS PROPRIETARY TO MOLEX INCORPORATED AND SHOULD NOT BE USED WITHOUT WRITTEN PERMISSION		SDA-70204-0321-0384		1 OF 1	