

All rights strictly reserved. Reproduction or issue to third parties in any form whatever is not permitted without written authority from the proprietor. Property of FCI. Copyright FCI.

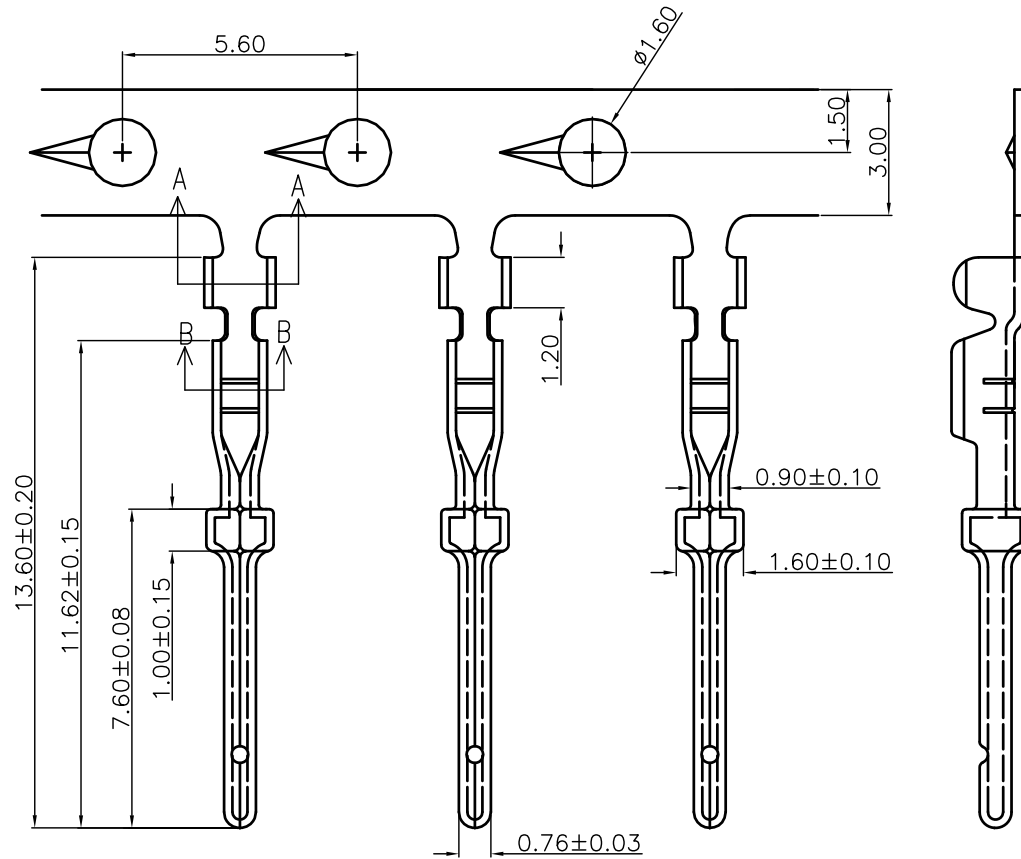


Tous droits strictement réservés. Reproduction ou communication à des tiers interdite sous quelque forme que ce soit sans autorisation écrite du propriétaire. Propriété de c FCI. Droits de reproduction FCI.

1 | 2

3

4



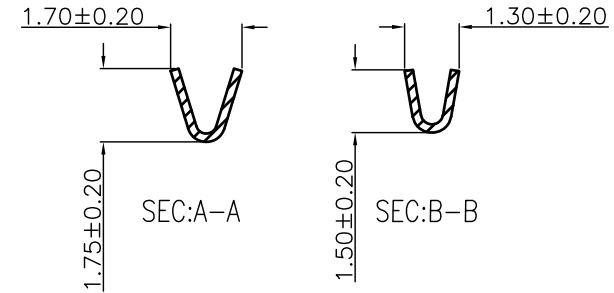
REMARK:

1. MATERIALS:

CONTACTS: COPPER ALLOY, GOLD(G\F or 30u") TOP OVER CONTACT AREA, 50u" Min. NICKEL UNDER PLATE.

2. PART NUMBER DESCRIPTION:

10090932-P XX X X LF	
SERIES NO.	LF: ROHS COMPLIANT
TYPE	PACKAGING
P: FIN (MALE)	8: BOX, 500 PCS
GAUGE SIZE	9: REEL, 10K PCS
24-28(AWG)	CONTACT FINISH
	4: GOLD FLASH
	6: 30u" GOLD



SIZE	PART NO.	PACKAGING
24-28AWG	10090932-P24*8LF	BOX, 500PCS
24-28AWG	10090932-P24*9LF	REEL, 10KPCS

mat'l. code				tolerances unless otherwise specified				CUSTOMER COPY		FCI		www.fciconnect.com	
ltr	ecn no	dr	date	linear	.X ± 0.38		projection	title	H/D D-SUB CRIMPING MALE CONTACT				
A	T09-1157	J.H	12/10/09		.XX ± 0.25								
					.XXX ± 0.10								
				angles	0° ± 2'		MM	product family	D-SUB		code		
				dr	JASON HSU	12/10/09							
				enr	JASON HSU	12/10/09							
				chr	GARY HSIEH	12/10/09	scale	size	dwg no		sheet		
				appd	JOSEPH HSIA	12/10/09							
sheet index	revision sheet	A	01				1:1	A4	10090932		1 of 1		

1 | 2

3

4

ACAD

PDM: Rev:A

STATUS: Released

Printed: Dec 22, 2009