

PLEASE CHECK WWW.MOLEX.COM FOR LATEST PART INFORMATION

Part Number: [0010441121](#)
Status: **Active**
Overview: [kk](#)
Description: 5.08mm (.200") Pitch KK® Header, Vertical, with Polarizing Backwall, 12 Circuits, Gold (Au) Plating

Documents:

[3D Model](#) [RoHS Certificate of Compliance \(PDF\)](#)
[Drawing \(PDF\)](#)

General

Product Family	PCB Headers
Series	2599
Application	Wire-to-Board
Overview	kk
Product Name	KK®

Physical

Breakaway	No
Circuits (Loaded)	12
Circuits (maximum)	12
Color - Resin	Natural
Durability (mating cycles max)	50
First Mate / Last Break	No
Glow-Wire Compliant	No
Guide to Mating Part	No
Keying to Mating Part	None
Lock to Mating Part	None
Material - Metal	Brass
Material - Plating Mating	Gold
Material - Plating Termination	Nickel
Material - Resin	Nylon
Number of Rows	1
Orientation	Vertical
PC Tail Length (in)	0.175 In
PC Tail Length (mm)	4.45 mm
PCB Retention	None
PCB Thickness Recommended (in)	0.062 In
PCB Thickness Recommended (mm)	1.60 mm
Packaging Type	Bag
Pitch - Mating Interface (in)	0.200 In
Pitch - Mating Interface (mm)	5.08 mm
Shrouded	Partial
Stackable	Yes
Surface Mount Compatible (SMC)	No
Temperature Range - Operating	0°C to +75°C
Termination Interface: Style	Through Hole

Electrical

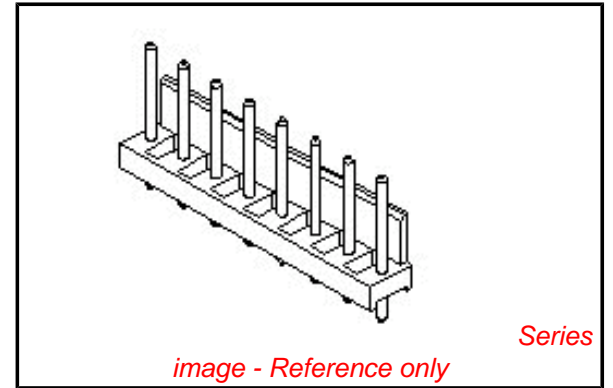
Current - Maximum per Contact	7A
Voltage - Maximum	250V

Material Info

Old Part Number	2599-12AG
-----------------	-----------

Reference - Drawing Numbers

Sales Drawing	SDA-2599-NAG
---------------	--------------



EU RoHS **China RoHS**

Compliance Status

Not Reviewed

REACH SVHC

Not Reviewed

Halogen-Free

Status

Not Reviewed

Need more information on product environmental compliance?

Email productcompliance@molex.com
 For a multiple part number RoHS Certificate of Compliance, [click here](#)

Please visit the [Contact Us](#) section for any non-product compliance questions.

Search Parts in this Series

[2599Series](#)

Mates With

KK® Crimp Terminal Housing [3001](#) , [5058](#)

This document was generated on 05/24/2010

PLEASE CHECK WWW.MOLEX.COM FOR LATEST PART INFORMATION

A-2599-NAG
PART NO
SEE CHART
COMP COMP
LOG UPDATE
REV A
9-12-80
10-1-80

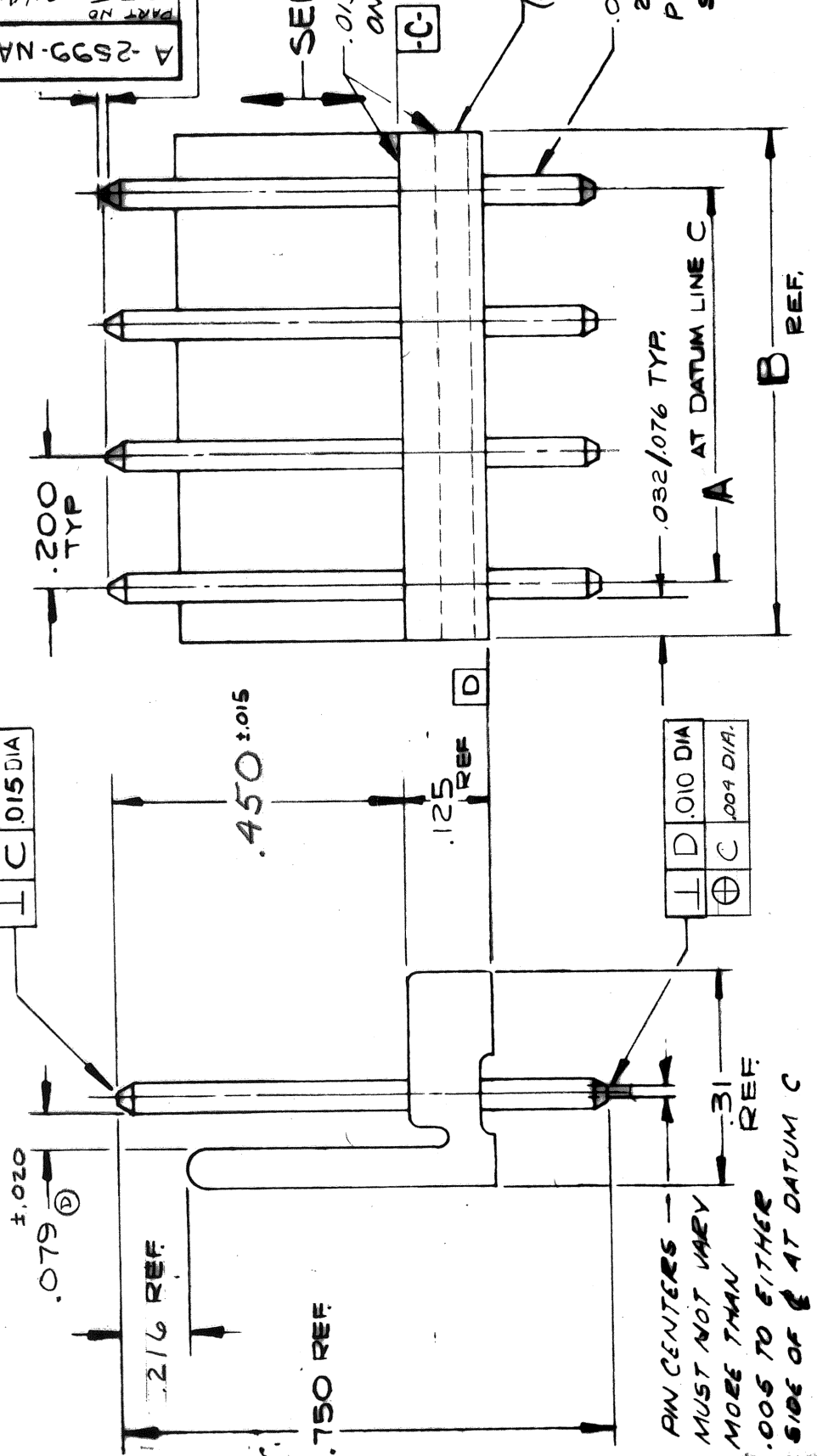
RELATIVE PIN HEIGHTS MUST NOT VARY MORE THAN .005 T.I.R.

SEE NOTE 2

.015 MAX. SAW BURR PERMITTED ON TOP & SIDE EDGES - BOTH ENDS

Nº 2403 (WAFER)

.045 DIA. PIN, BRASS
2173-1G
PLATING PER ENG.
STD. 88-501.



PIN CENTERS MUST NOT VARY MORE THAN .005 TO EITHER SIDE OF & AT DATUM C

NOTES

- 1 PIN PUSH OUT FORCE: 3 LBS. MIN.
- 2 BURRS NOT TO EXTEND BELOW SURFACE D
- 3 PIN MUST CONFORM TO MOLEX SOLDERABILITY SPEC. NO. 152 AFTER PLATING.

PART N°	ENG N°	N° OF CIRCUITS	DIM. A	DIM. B
10-44-1181	A-2599-18AG	18	3400 ± .008	2805 / 3501
10-44-1171	-17	17	3200 ± .008	3405 / 3301
10-44-1161	-16	16	3000 ± .007	3204 / 3103
10-44-1151	-15	15	2800 ± .007	3004 / 2902
10-44-1141	-14	14	2600 ± .007	2804 / 2702
10-44-1131	-13	13	2400 ± .006	2603 / 2503
10-44-1121	-12	12	2200 ± .006	2403 / 2303
10-44-1111	-11	11	2000 ± .006	2203 / 2103
10-44-1101	-10	10	1800 ± .005	2002 / 1904
10-44-1091	-9	9	1600 ± .005	1802 / 1704
10-44-1081	-8	8	1400 ± .004	1601 / 1505
10-44-1071	-7	7	1200 ± .004	1401 / 1305
10-44-1061	-6	6	1000 ± .004	1201 / 1105
10-44-1051	-5	5	800 ± .003	1000 / 906
10-44-1041	-4	4	600 ± .003	800 / 706
10-44-1031	-3	3	400 ± .002	599 / 507
10-44-1021	A-2599-2AG	2	200 ± .002	399 / 307

WAFER MATL: NYLON, PER ENG. STD. 1289.1 .200 CENTER DIA.

REV	DESCRIPTION	DATE
F	FIN. REL. -18, -17, -16, -15, -14, -13, -10, JRT	
E	ERD 19759	
	12-20-84	
	FILMED	
D	ECO 5255	
	KS 5-26-81 GFL	
	MICROFILMED	
	FINAL REL. 944, 144, 124	
	ERD 1303	
	KS 2-2-81 GFL	
C	FINAL REL. 2599-8/4	
	ERD 12688	
	10-27-80 KS	
B	FIN. REL. 2-3-56-7-11	
	ERD NO 12558	
	9-22-80 JRT GFL	
A	X-RELEASE	
	ERD NO 12481	
	9-12-80 GFL	

FOLIASING WAFER ASSEMBLY
MOLEX PRODUCTS CO.
BAJH

9-12-80

A-2599-NAG