

**PLEASE CHECK WWW.MOLEX.COM FOR LATEST PART INFORMATION**

**Part Number:** **0334861601**  
**Status:** **Active**  
**Overview:** mx150 sealed connector system  
**Description:** 3.50mm (.138") Pitch MX150™ Hybrid Sealed Male Connector, Dual Row, 16 Circuits, Polarization A, without Connector Position Assurance, Black

**Documents:**

[3D Model](#)  
[Application Specification \(PDF\)](#)  
[Drawing \(PDF\)](#)  
[Product Specification PS-33476-000 \(PDF\)](#)  
[RoHS Certificate of Compliance \(PDF\)](#)

**General**

Product Family	Crimp Housings
Series	33486
Comments	No Connector Position Assurance (CPA), Hybrid
More Detailed Tech Information	<a href="http://ewcap.uscarteams.org">http://ewcap.uscarteams.org</a>
Overview	<u>mx150 sealed connector system</u>
Product Name	MX150™

**Physical**

Circuits (maximum)	16
Circuits Detail	16
Color - Resin	Black, Natural
Gender	Male
Glow-Wire Compliant	No
Keying to Mating Part	Yes
Lock to Mating Part	Yes
Material - Resin	Modified Polystyrene Alloy
Number of Rows	2
Packaging Type	Bag
Panel Mount	No
Pitch - Mating Interface (in)	0.138 In
Pitch - Mating Interface (mm)	3.50 mm
Polarized to Mating Part	Yes
Stackable	No
Temperature Range - Operating	-40°C to +125°C

**Electrical**

Current - Maximum per Contact	22A
-------------------------------	-----

**Material Info**

**Reference - Drawing Numbers**

Application Specification	AS-33472-100
Packaging Specification	PK-31300-514
Product Specification	PS-33476-000
Sales Drawing	ES-E1AB-14A485-AA, SD-33486-161



**EU RoHS**

**ELV and RoHS Compliant**  
**REACH SVHC**  
**Contains SVHC: No**  
**Halogen-Free Status**

**China RoHS**



**Need more information on product environmental compliance?**

Email [productcompliance@molex.com](mailto:productcompliance@molex.com)  
 For a multiple part number RoHS Certificate of Compliance, [click here](#)

Please visit the [Contact Us](#) section for any non-product compliance questions.

**Search Parts in this Series**

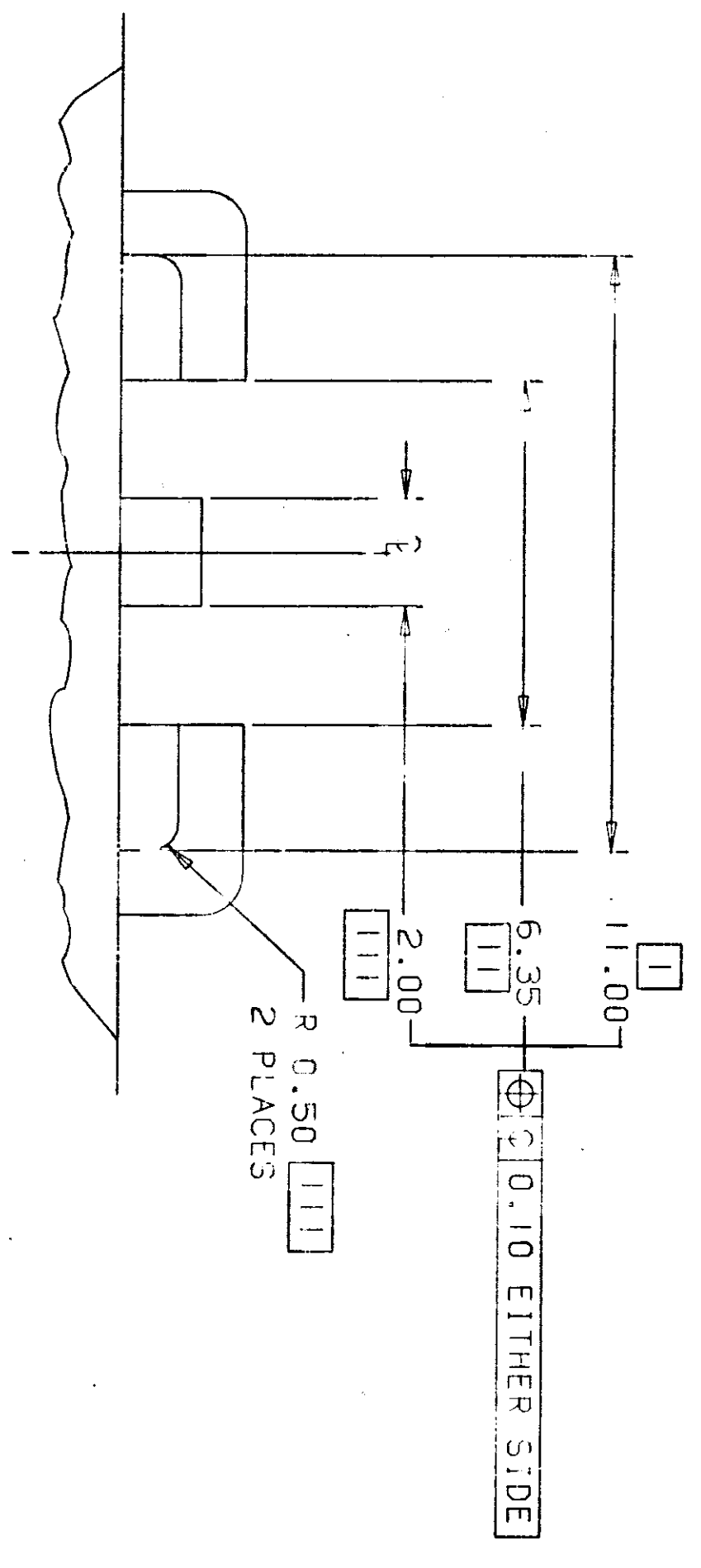
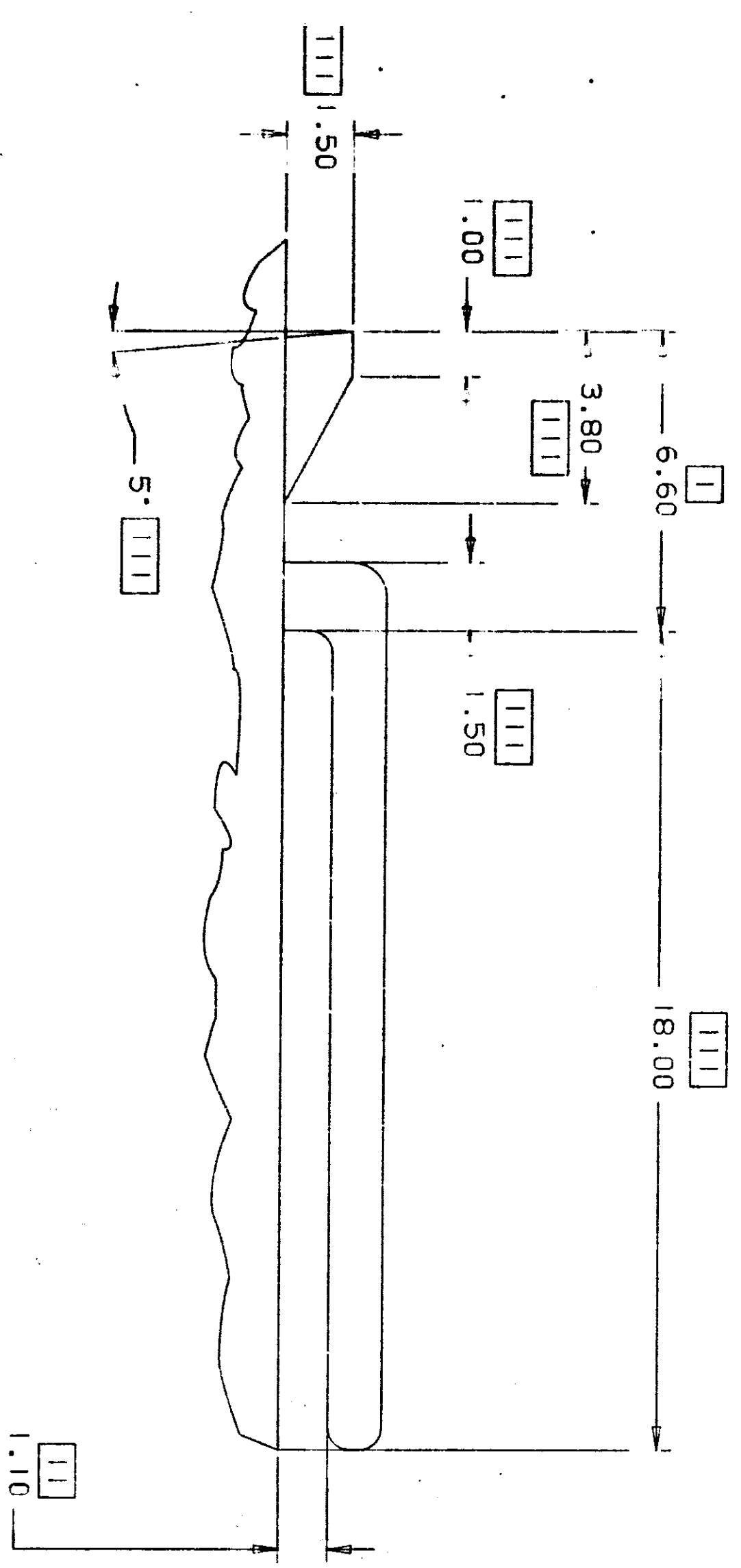
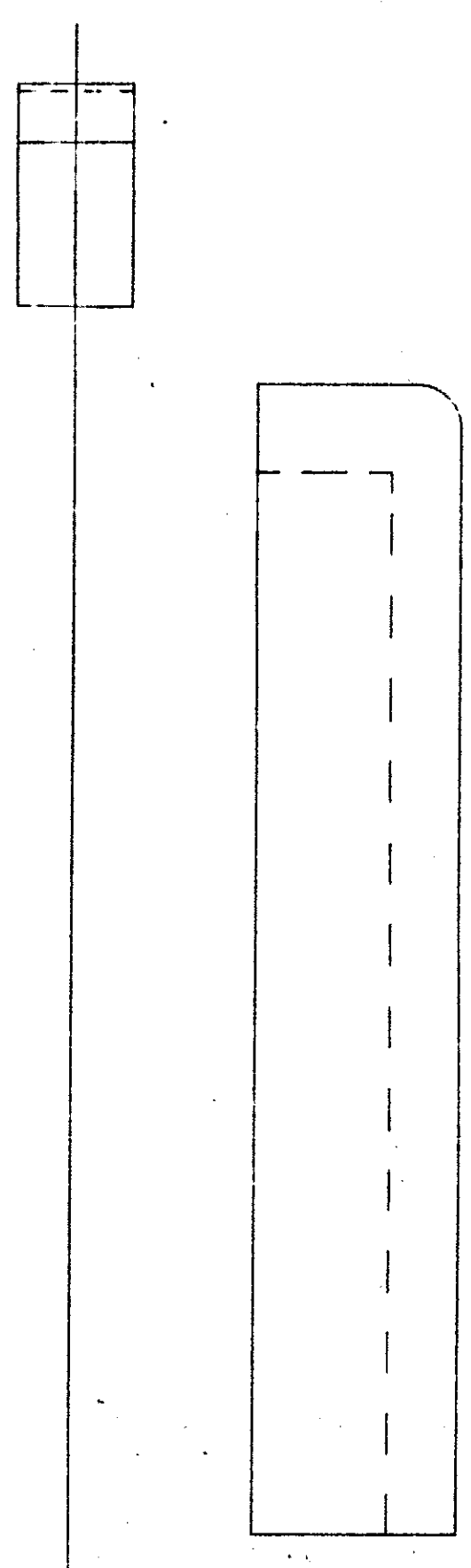
[33486Series](#)

**Mates With**

[33476](#) Female Dual Row Hybrid Sealed Connector

**Use With**

[33000](#) MX150™ Tin (Sn) Male Terminal,  
[33011](#) Gold (Au) Male Terminal



VIEW OF WIRE END OF CONNECTOR

NOTES: UNLESS OTHERWISE SPECIFIED

- GENERAL TOLERANCES:
  - ±0.10 ALL TWO PLACE DIMENSIONS
  - ±0.3 ALL ONE PLACE DIMENSIONS
  - ±1.0° ALL ANGULAR DIMENSIONS
- 0.5° MAXIMUM DRAFT ANGLE
- 0.3 MAXIMUM RADIUS PERMISSIBLE ON ALL EDGES AND FILLETS SHOWN AS SHARP
- ALL RADI: 0.8
- WALL THICKNESS 1.3-1.0

DATE LET	REVISIONS	DR	CK	APP
11-18-77	RELEASED COMPLETE			
	AKI-6000 # 86			

NO. ES-EIAB-14A485-AA

**SPIND** PRODUCT ENGINEERING

MILLIMETRES ON ORIGINAL FORMAT	1:1
10	20
30	40
50	60
70	80
90	100
110	120
130	140

DO NOT SCALE ABOVE SCALE FOR REFERENCE ONLY

DRAWN BY	DATE	CHECKED	SCALE	APPROVED	CODE
Jimin	11-8-77	CE	1/2N	MA	

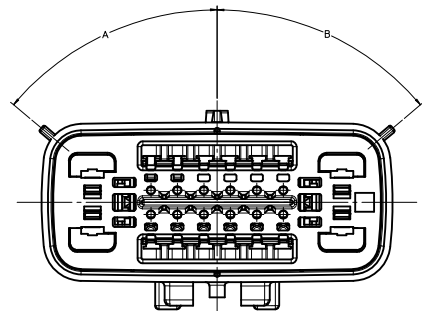
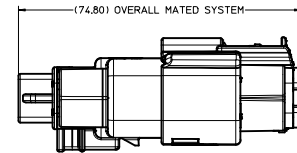
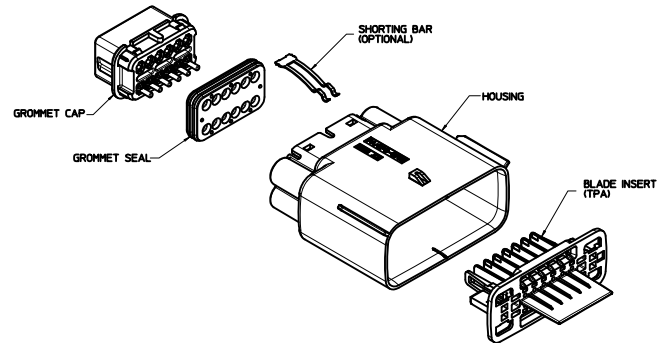
UNLESS OTHERWISE SPECIFIED  
 DIMENSIONS ARE IN MILLIMETRES  
 MACHINED DIM. 1  
 ANGULAR DIM. 1

NAME: SPECIFICATION - RETAINER - WIRE  
 CONNECTOR SLEEVE

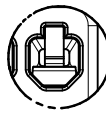
DATE: 11-8-77

MATERIAL: 55

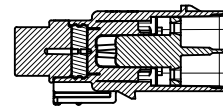
NO. ES-EIAB-14A485-AA



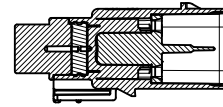
KEYING OPTION  
SEE TABLE  
SCALE 4:1



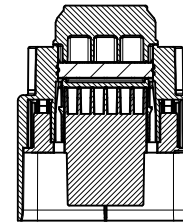
DETAIL 1  
SCALE 10:1  
USE ONLY BLADE TERMINAL P/N 31296-0008  
FOR ALL SHORTING BAR APPLICATIONS  
INSERT SHORTING BAR BLADE TERMINALS INTO  
GROHMET CAP OPENINGS AS SHOWN ABOVE



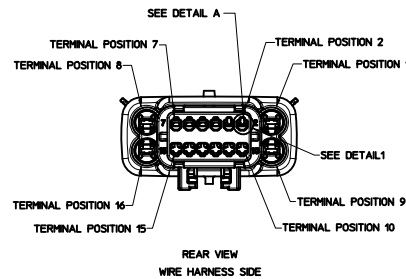
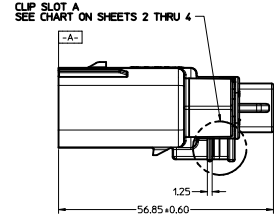
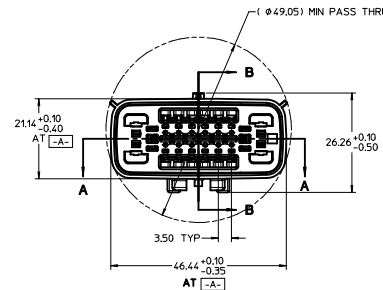
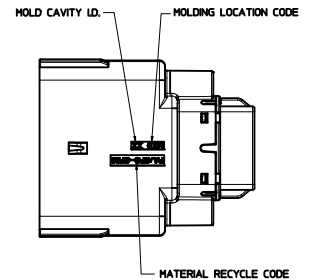
SECTION B-B  
INSERT SHOWN IN PRE-LOCK POSITION  
SEE NOTE 2



SECTION B-B  
INSERT SHOWN IN FINAL LOCK POSITION  
SEE NOTE 2



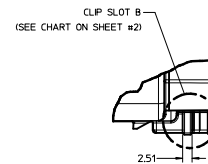
SECTION A-A



SEE DETAIL A

TERMINAL POSITION 7  
TERMINAL POSITION 8  
TERMINAL POSITION 16  
TERMINAL POSITION 15  
TERMINAL POSITION 2  
TERMINAL POSITION 1  
TERMINAL POSITION 9  
TERMINAL POSITION 10  
SEE DETAIL 1

REAR VIEW  
WIRE HARNESS SIDE



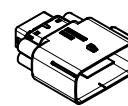
CLIP SLOT B  
(SEE CHART ON SHEET #2)

APPLIES TO 33486-1721 THRU 1729,  
33486-1761, 33486-1764, AND 33486-1765 ONLY  
SCALE 2:1

NOTES: UNLESS OTHERWISE STATED

- DESIGNED TO MATE WITH RECEPTACLE HOUSING ASSEMBLY SPECIFIED IN DRAWING SD-33476-161.
- ASSEMBLY SHIPPED WITH BLADE INSERT IN PRE-LOCKED POSITION (SEE SECTION B-B PRE-LOCK). UPON FULL TERMINAL ASSEMBLY, EACH BLADE INSERT MUST BE SNAPPED INTO ITS FINAL-LOCK POSITION. FORCE TO MOVE TPA FROM FINAL LOCK TO PRE-LOCK POSITION: 75 N MAX.
- FOR 15mm BLADE TERMINALS TO BE USED WITH THIS ASSEMBLY SEE MOLEX DRAWING SD-33500-001 FOR 2.8mm RECEPTACLE TERMINALS SEE TABLE.
- SYSTEM TO BE USED WITH WIRE WITHIN RANGE OF 1.5mm TO 2.5mm.
- MATERIAL: SPS/NYLON BLEND, 20% GLASS FILLED.
- FOR ASSEMBLIES W/SHORTING BARS, ASSEMBLE SHORTING BARS PER SPECIFICATION E-33546-001
- SHORTING BAR TERMINAL CRIMP ANGLE MUST BE BETWEEN -14 DEG. AND +35 DEG. AFTER INSTALLATION INTO THE CONNECTOR ASSEMBLY. REFER TO MOLEX DRAWING SD-31296-001 FOR DETAILS.
- SHALL CONFORM TO PACKAGING SPECIFICATION PK-31300-514.
- SHALL CONFORM TO PRODUCT SPECIFICATION PS-33476-000.
- ASSEMBLY CONFORMS TO SAE/USCAR-2 REV. 4 WITH THE FOLLOWING EXCEPTIONS:  
14 AWG TERMINAL INSERTION FORCES SHALL NOT EXCEED 42 NEWTONS.

TYO9 2.8mm CABLE SEAL TERMINAL		
FORD P/N	GRIP SIZE	
SP2T-14421-GA	12	
IFT-14421-JA	14	
IFT-14421-HA	16	
IFT-14421-GA	18	
IFT-14421-FA	20	
IFT-14421-EA	22	



SCALE 1:1

<b>ENTER DESCRIPTION</b> EC NO. UAU2010-001 DRAWING THIS 7017 OR 010 APPROPRIATE 2010/04/04 REV.	QUALITY SYMBOLS 	GENERAL TOLERANCES (UNLESS SPECIFIED) mm INCH 4 PLACES ±.010 ±.0004 3 PLACES ±.015 ±.0005 2 PLACES ±.020 ±.0006 1 PLACE ±.030 ±.0012 ANGULAR ±.3°	DIMENSION STYLE <b>MM ONLY</b> DRAWN BY DATE JWESLEY 06-16-02 CHECKED BY DATE DGRIFITHS 07-09-02 APPROVED BY DATE VKOSHY 2010/04/06	SCALE <b>2:1</b> DESIGN UNITS <b>METRIC</b> THIRD ANGLE PROJECTION	MATERIAL NO. <b>SD-33486-161</b> DOCUMENT NO.	SHEET NO. <b>1 OF 4</b>
	DRAFT WHERE APPLICABLE MUST REMAIN WITHIN DIMENSIONS			<b>SEE CHART</b>		THIS DRAWING CONTAINS INFORMATION THAT IS PROPRIETARY TO MOLEX INCORPORATED AND SHOULD NOT BE USED WITHOUT WRITTEN PERMISSION





ASSEMBLY PART NUMBER	COLOR	KEYING OPTION	DIMENSIONS IN DEGREES		CAVITY TYPE & STATUS (X = PLUGGED, SB = SHORTING BAR)											SHORTING BAR	SB QTY	CLIFLOT TYPE	STATUS			
			A	B	2	3	4	5	6	7	10	11	12	13	14					15		
			33486-1902	BLACK	A	50	50		X		X	X										X
33486-1903	BLACK	A	50	50		X									X	X	X		-	-	A	
33486-1904	BLACK	A	50	50			X								X	X	X		-	-	A	
33486-1905	BLACK	A	50	50	X		X								X	X	X		-	-	A	
33486-1906	BLACK	A	50	50				X									X		-	-	A	
33486-1907	YELLOW	A	50	50			X	X								X			-	-	A	
33486-1908	BLACK	A	50	50			X	X								X			-	-	A	
33486-1909	BLACK	A	50	50					X	X	X	X					X		-	-	A	
33486-1910	BLACK	A	50	50					X	X	X	X					X		-	-	A	
33486-1911	LT.GRAY	B	15	50				X	X	X	X	X	X	X	X	X	X		-	-	A	
33486-1912	BLACK	A	50	50	X		X					X	X	X				-	-	A		
33486-1913	BLACK	A	50	50		X						X	X	X				-	-	A		
33486-1914	BLACK	A	50	50	X		X					X	X	X	X	X		-	-	A		
33486-1915	BLACK	A	50	50			X						X	X	X	X		-	-	A		
33486-1916	BLACK	A	50	50			X							X				-	-	A		
33486-1917	BLACK	A	50	50	X	X	X	X					X	X	X			-	-	A		
33486-1918	BLACK	A	50	50	X	X	X					X	X	X				-	-	A		
33486-1919	BLACK	A	50	50	X	X			X	X				X	X	X		-	-	A		
33486-1920	BLACK	A	50	50	X	X	X							X	X	X		-	-	A		
33486-1921	BLACK	A	50	50	X	X	X	X			X	X	X		X	X	X	-	-	A		
33486-1922	BLACK	A	50	50	X		X								X			-	-	A		
33486-1923	BLACK	A	50	50	X	X	X	X		X	X	X	X	X	X	X	X	-	-	A		
33486-1924	BLACK	A	50	50	X	X	X	X		X	X	X	X	X	X	X	X	-	-	A		
33486-1925	BLACK	A	50	50				X	X					X	X	X		-	-	A		
33486-1926	BLACK	A	50	50		X	X	X	X	X	X	X	X	X	X	X	X	-	-	A		
33486-1927	BLACK	A	50	50	X		X							X	X	X		-	-	A		
33486-1928	LT.GRAY	B	15	50	X	X	X	X	X	X	X	X	X	X	X	X	X	-	-	A		
33486-1929	LT.GRAY	B	15	50				X	X									-	-	A		
33486-1930	BLACK	A	50	50	X		X	X		X	X	X	X	X	X	X	X	-	-	A		
33486-1931	BLACK	A	50	50	X		X	X		X	X	X	X	X	X	X	X	-	-	A		
33486-1932	BLACK	A	50	50	X		X							X	X			-	-	A		
33486-1933	BLACK	A	50	50	X			X						X	X	X	X	-	-	A		
33486-1934	BLACK	A	50	50		X	X	X	X	X	X	X	X	X	X	X	X	-	-	A		
33486-1935	BLACK	A	50	50	X	X	X	X	X	X	X	X	X	X	X	X	X	-	-	A		
33486-1936	BLACK	A	50	50	X		X						X	X	X	X	X	-	-	A		
33486-1937	BLACK	A	50	50	X		X			X	X	X	X	X	X	X	X	-	-	A		
33486-1938	BLACK	A	50	50	X			X		X	X	X	X	X	X	X	X	-	-	A		
33486-1939	BLACK	A	50	50		X	X						X			X		-	-	A		
33486-1940	BLACK	A	50	50	X	X				X	X	X	X	X	X	X	X	-	-	A		
33486-1941	BLACK	A	50	50											X			-	-	A		
33486-1942	BLACK	A	50	50	X	X		X		X	X	X	X	X	X	X	X	-	-	A		
33486-1943	BLACK	A	50	50			X	X						X				-	-	A		
33486-1944	LT.GRAY	B	15	50			X								X			-	-	A		
33486-1945	BLACK	A	50	50	X	X				X	X	X						-	-	A		
33486-1946	BLACK	A	50	50			X				X	X						-	-	A		
33486-1947	BLACK	A	50	50	X	X			X					X				-	-	A		
33486-1948	BLACK	A	50	50		X									X			-	-	A		
33486-1949	LT.GRAY	B	15	50		X												-	-	A		
33486-1950	BLACK	A	50	50					X	X					X	X	X	-	-	A		
33486-1951	BLACK	A	50	50					X						X	X	X	-	-	A		
33486-1952	BLACK	A	50	50						X					X	X		-	-	A		
33486-1953	BLACK	A	50	50							X				X	X	X	-	-	A		
33486-1954	YELLOW	H	50	32.5	X	X	SB	SB						SB	SB		X	YES	2	A	SALEABLE	
33486-1955	BLACK	A	50	50					X						X	X	X	-	-	A		
33486-1956	BLACK	A	50	50					X						X	X	X	-	-	A		
33486-1957	BLACK	A	50	50						X					X	X	X	-	-	A		
33486-1958	BLACK	A	50	50						X					X			-	-	A		

<b>ENTER DESCRIPTION</b> EC NO: UAU2010-001 DRAWN BY THIS 2010/08/04 CHECKED BY THIS 2010/08/04 APPROVED BY THIS 2010/08/04	QUALITY SYMBOLS ▽=0 ▽=0 ▽=0	GENERAL TOLERANCES (UNLESS SPECIFIED)	DIMENSION STYLE		SCALE		DESIGN UNITS	THIRD ANGLE PROJECTION
		mm INCH	MM ONLY		1:1		METRIC	
	4 PLACES ±.001	±.001	DRAWN BY	DATE		TITLE		
	3 PLACES ±.001	±.001	JWESLEY	06-16-02		CONNECTOR, BLADE 2 ROW		
	2 PLACES ±0.10	±.005	CHECKED BY	DATE		HOUSING, SEALED, 16 WAY		
	1 PLACE ±0.3	±.005	DGRIFITHS	07-09-02		MOLEX INCORPORATED		
ANGULAR ±.3°		APPROVED BY	DATE		DOCUMENT NO.			
		VKOSHY	2010/04/06		SD-33486-161		SHEET NO. 4 OF 4	
DRAFT WHERE APPLICABLE MUST REMAIN WITHIN DIMENSIONS			<b>SEE CHART</b>					
THIS DRAWING CONTAINS INFORMATION THAT IS PROPRIETARY TO MOLEX, INCORPORATED AND SHOULD NOT BE USED WITHOUT WRITTEN PERMISSION								