

Monolithic crystal filter

MQF21.4-0750/18



Application

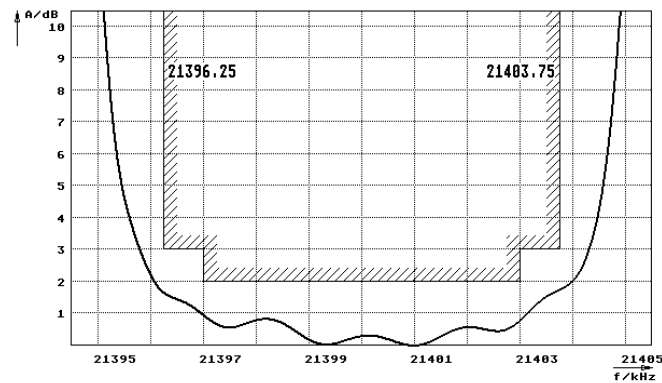
- 8 pol filter
- i.f.- filter
- use in mobile and stationary transceivers

Limiting values

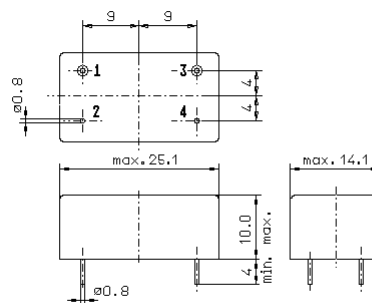
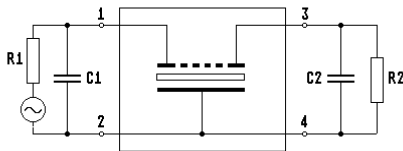
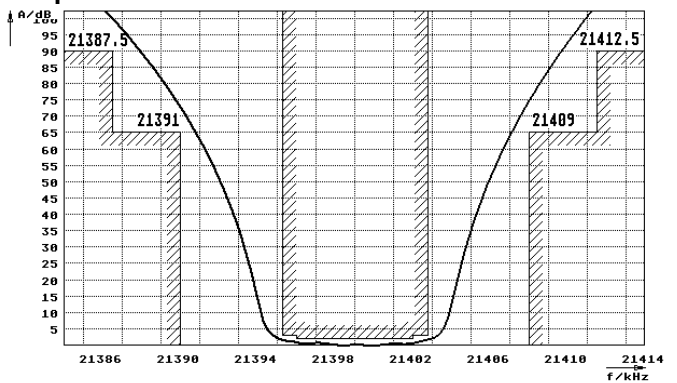
		Unit	Value
Center frequency	f_0	MHz	21.4
Insertion loss		dB	≤ 3.5
Pass band at 3.0 dB		kHz	$\pm \geq 3.75$
Ripple in pass band	$f_0 \pm 3.00$ kHz	dB	≤ 2.0
Stop band attenuation	$f_0 \pm 9.0$ kHz	dB	≥ 65
	$f_0 \pm 12.5 \dots 500$ kHz	dB	> 90
Maximum input power		dBm	≤ 10
Continuous input power		dBm	≤ 0
Terminating impedance Z			
R1 C1		Ohm/pF	470 15
R2 C2		Ohm/pF	470 15
Operating temp. range			
		° C	-20... +70

Characteristics MQF21.4-0750/18

Pass band



Stop band



- Pin connections:
- 1 Input
 - 2 Ground-Input
 - 3 Output
 - 4 Ground-Output