

PLEASE CHECK WWW.MOLEX.COM FOR LATEST PART INFORMATION

Part Number: [0350092011](#)
Status: **Active**
Description: 1.00mm (.039") Diameter Wire-to-Board Header, Right Angle, Dual Row, 10 Circuits

Documents:

[3D Model](#)
[Drawing \(PDF\)](#)

[RoHS Certificate of Compliance \(PDF\)](#)

General

Product Family	PCB Headers
Series	35009
Application	Wire-to-Board
Product Name	N/A

Physical

Breakaway	No
Circuits (Loaded)	10
Circuits (maximum)	10
Color - Resin	Natural
Durability (mating cycles max)	50
First Mate / Last Break	No
Glow-Wire Compliant	No
Guide to Mating Part	No
Keying to Mating Part	None
Lock to Mating Part	None
Material - Plating Mating	Tin
Material - Plating Termination	Tin
Material - Resin	Polyester
Number of Rows	2
Orientation	Right Angle
PC Tail Length (in)	0.126 In
PC Tail Length (mm)	3.20 mm
PCB Locator	No
PCB Retention	Yes
PCB Thickness Recommended (in)	0.062 In
PCB Thickness Recommended (mm)	1.60 mm
Packaging Type	Bag
Pitch - Mating Interface (in)	0.118 In
Pitch - Mating Interface (mm)	3.00 mm
Plating min: Mating (µin)	100
Plating min: Mating (µm)	2.5
Plating min: Termination (µin)	100
Plating min: Termination (µm)	2.5
Polarized to PCB	Yes
Shrouded	Partial
Stackable	No
Temperature Range - Operating	-40°C to +120°C
Termination Interface: Style	Through Hole

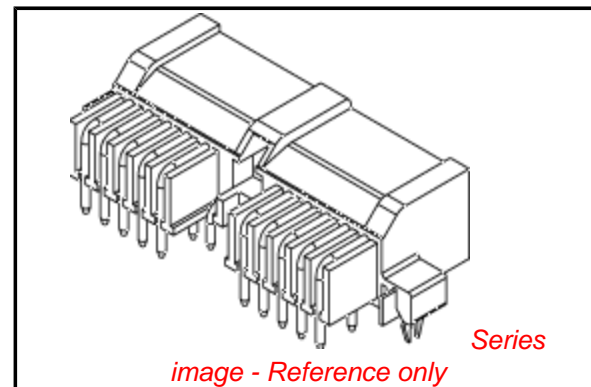
Electrical

Current - Maximum per Contact	6A
Voltage - Maximum	300V

Material Info

Reference - Drawing Numbers

Sales Drawing	SD-35009-2011
---------------	---------------



EU RoHS

**ELV and RoHS
Compliant**
REACH SVHC
 Not Reviewed
**Halogen-Free
Status**
 Not Reviewed

China RoHS



**Need more information on product
environmental compliance?**

Email productcompliance@molex.com
 For a multiple part number RoHS Certificate of
 Compliance, [click here](#)

Please visit the [Contact Us](#) section for any
 non-product compliance questions.

Search Parts in this Series

[35009Series](#)

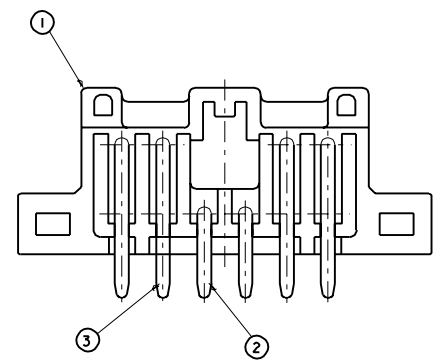
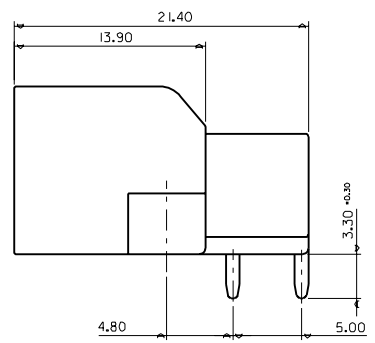
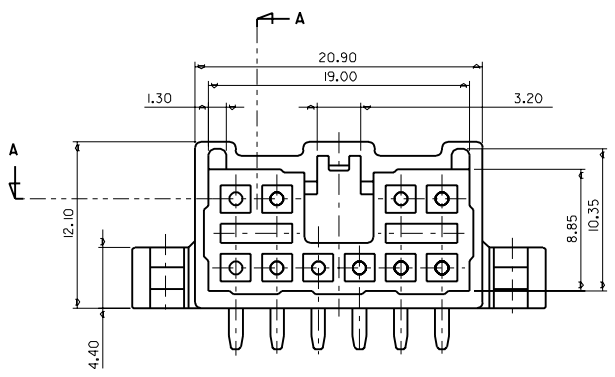
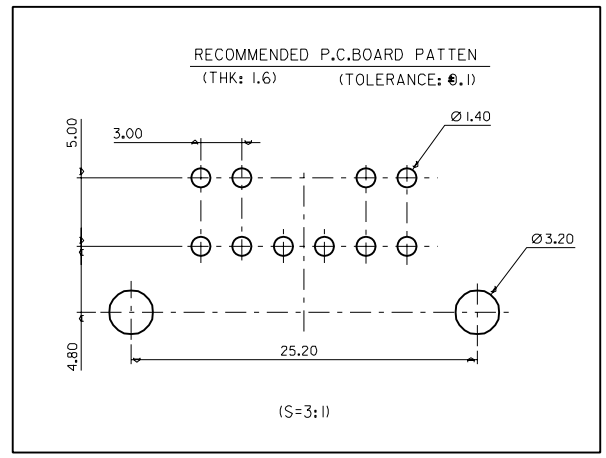
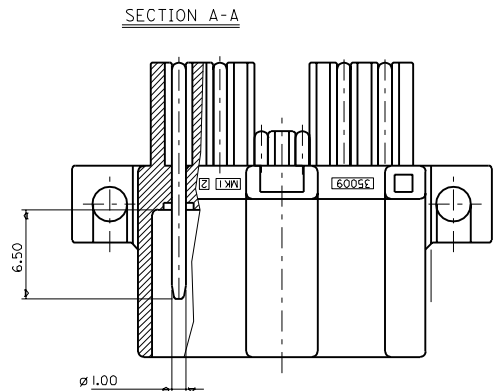
Mates With

Wire-to-Board Receptacle Housing [35200](#) ,
[35509](#)

This document was generated on 04/13/2010

PLEASE CHECK WWW.MOLEX.COM FOR LATEST PART INFORMATION

DWG. NO. SD35009-2011
 PROJECT NO. SIMILAR ITEM
 PROJECT NO. SIMILAR ITEM
 DO NOT SCALE DRAWING DIMENSION IN METRIC



NO.	P/NAME	P/NO.	MATERIAL	FINISH	QTY.
1	HEADER 10P	35009-0011	SEE NOTE	NATURAL	1
2	1.0 CIRCULOCK PIN (S)	35009-1001	BRASS	TIN-PLATING	6
3	1.0 CIRCULOCK PIN (L)	35009-1101	BRASS	TIN-PLATING	4

NOTE

- MATERIAL : POLYESTER UL94V-0
- FINISH: NATURAL
- APPLICATION: SD35200-1000(F/HSG 10P)

EC NO. DRWN: CHK: APPR:	DESCRIPTION MAJOR CRITICAL C	QUALITY SYMBOLS		GENERAL TOLERANCES: (UNLESS SPECIFIED)		SCALE	DESIGN UNITS	THIRD ANGLE PROJECTION	DIMENSIONS:		SHT	REV		
				mm	INCH	mm	INCH	mm	INCH	mm	INCH	mm	ONLY	REVISE ON CAD ONLY
		4 PLACES	±0.	±.	3 PLACES	±0.	±.	2 PLACES	±0.2	±.	DRAWN BY & DATE H.C.RHO 98.06.24			TITLE: 3.0 PITCH A/T CONNECTOR HEADER HOUSING ASS'Y (R/A) WITH SCREW MTG.
		1 PLACE	±0.3	±.	ANGULAR: ± °		APPROVED BY & DATE		MOLEX INCORPORATED KOREA					
REV	A	DRAFT WHERE APPLICABLE MUST REMAIN WITHIN DIMENSIONS		CAD FILENAME		MATERIAL NO. SEE NOTE		DRAWING NO. SD35009-2011		SHEET NO. 1 OF 1		SIZE B		
THIS DRAWING CONTAINS INFORMATION THAT IS PROPRIETARY TO MOLEX INCORPORATED AND SHOULD NOT BE USED WITHOUT WRITTEN PERMISSION.														