

Features

- Frequency Range: LO & RF 2– 500 MHz, IF DC – 500 MHz
- L.O. Drive: +3 dBm
- Industry Standard SMT package
- Available in Tape-and -Reel
- Low Cost

Description

The MXB-0502-3 is a low drive level, surface mount mixer designed for applications that require small, low cost and highly reliable surface mount components. This mixer is a double balanced design for wideband high dynamic range use in communications up and down-converter applications.

SURFACE MOUNT MIXER



Specifications

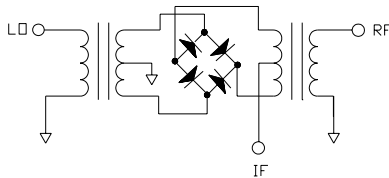
Parameter	Min	Typ	Max
Frequency Range (MHz)	2		500
Conversion Loss (dB)		5.5	8.0
LO – RF Isolation (dB)	25	36	
LO – IF Isolation (dB)	20	32	
IIP ₃ (dBm)		+10	

Notes: Test Conditions-LO +3 dBm, RF -10 dBm, IF 30 MHz.
Typical values represent Mid-band performance @ 25°C.

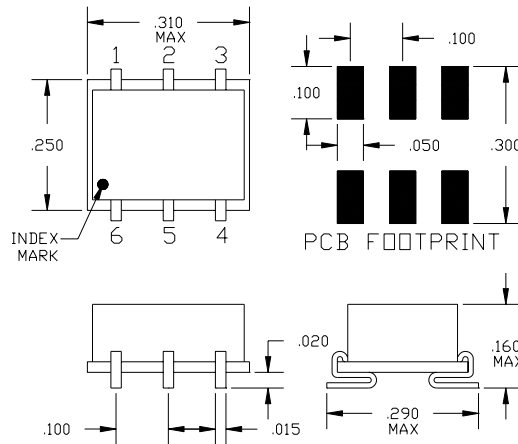
Absolute Maximum Ratings

Parameter	Maximum
RF Power	+ 13 dBm
Operating Temperature	-50 to +80 °C
Storage Temperature	-65 to +100 °C
Re-flow Temperature	+ 240 °C

Schematic



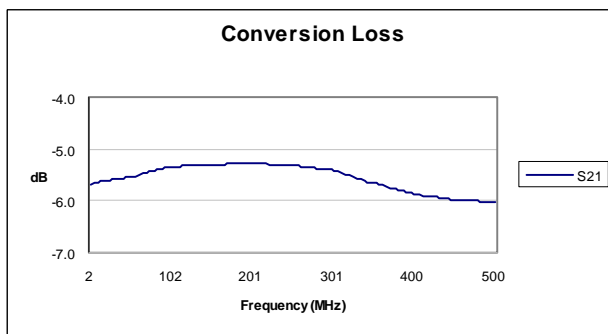
Package – S07



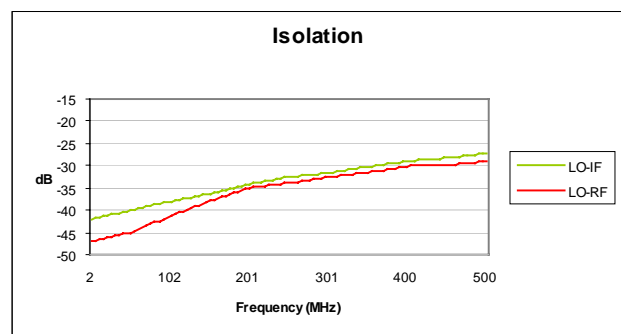
Pin Functions

Function	Pin
LO INPUT	1
RF INPUT	4
IF OUTPUT	5
GROUND	2,3,6

Typical Test Data – Conversion Loss



Typical Test Data – LO-RF and LO-IF Isolation



Specifications and information on this data sheet are subject to change without notice.