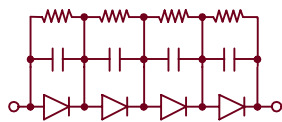
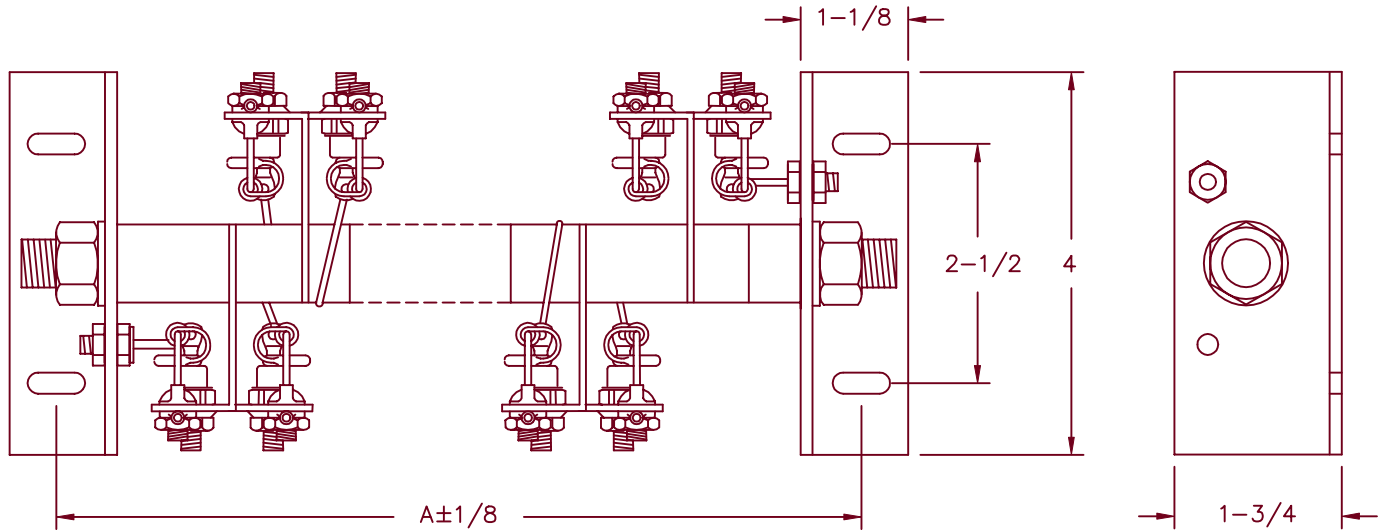
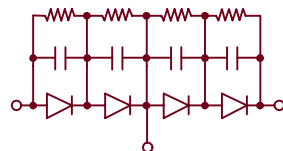


High Voltage Rectifier Assembly CHV34 Series



H = Halfwave



D = Doubler

Mounting: Horizontal (convection cooling)
 Horizontal or vertical (forced air or oil)
 DC output rating—12 Amps/25°C convection cooled
 —30.5 Amps/40°C forced air cooled
 @ 1000 LFM
 —46 Amps/40°C oil cooled
 Peak Reverse voltage— from 8KV to 80KV

CATALOG NUMBER	PRV RATING KV	DIMENSION A
CHV34*08	8	4-3/4
CHV34*12	12	5-7/8
CHV34*16	16	7
CHV34*20	20	8-1/8
CHV34*24	24	9-1/4
CHV34*28	28	10-3/8
CHV34*32	32	11-1/2
CHV34*36	36	12-5/8
CHV34*40	40	13-3/4
CHV34*44	44	14-7/8
CHV34*48	48	16-5/8
CHV34*52	52	17-1/8
CHV34*56	56	18-1/4
CHV34*60	60	19-3/8
CHV34*64	64	20-1/2
CHV34*68	68	21-5/8
CHV34*72	72	22-3/4
CHV34*76	76	23-7/8
CHV34*80	80	25

*Add H or D For doublers add 1" to dimension A

- Single Phase Halfwave Or Doubler
- Gold Iridited Aluminum Heatsinks
- Each Diode is R-C Compensated
- 800 Amperes Surge Current (1 Cycle)
- Resistive - Inductive Load. Derate 20% for Capacitive Loads

3-9-01 Rev. IR

CHV34

