

## 20 dB, Bi-Directional Coupler, 1 - 1000 MHz

Rev. V3

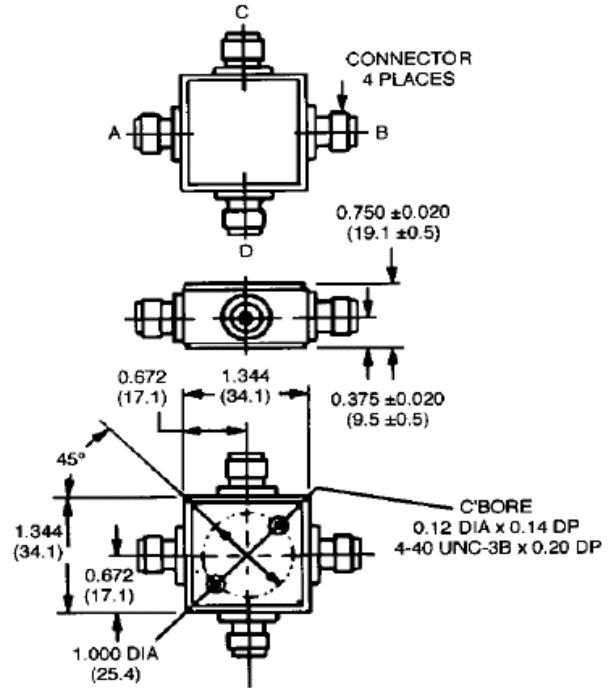
### Features

- Broad Frequency Range
- Constant Coupling—Within  $\pm 0.5$  dB Max
- VSWR: 1.3:1 Max
- 

### C-8

### Description

Bi-Directional Couplers offer the ability to couple the power in two directions while maintaining directivity.



Dimensions in ( ) are in mm.  
 Unless Otherwise Noted: .xxx =  $\pm 0.015$  (x =  $\pm 0.4$ )  
 WEIGHT (APPROX.): 2.5 OUNCES 71 GRAMS

### Electrical Specifications<sup>1</sup>: $T_A = -55^\circ\text{C}$ to $+85^\circ\text{C}$

Parameter	Test Conditions	Frequency	Units	Min	Typ	Max
Coupling	Input to Output	1-1000 MHz	dB	19.0	20.0	21.0
Coupling Flatness	—	10 - 500 MHz	dB	—	—	$\pm 0.25$
		1 - 1000 MHz	dB	—	—	$\pm 0.5$
VSWR	All Ports	10 - 500 MHz	Ratio	—	—	1.2:1
		1 - 1000 MHz	Ratio	—	—	1.3:1
Directivity	Both Directions	10 - 500 MHz	dB	25	—	—
		1 - 1000 MHz	dB	20	—	—
Main Line Loss <sup>2</sup>	—	10 - 500 MHz	dB	—	—	0.5
		1 - 1000 MHz	dB	—	—	0.7

1. All specifications apply with 50 ohm source and load impedance.

2. Includes theoretical power split.

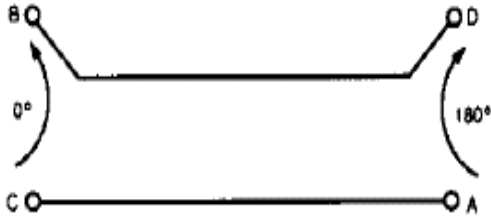
This product contains elements protected by United States Patent number 3,426,298.

# CH-132

20 dB, Bi-Directional Coupler,  
 1 - 1000 MHz

Rev. V3

## Functional Diagram



## Ordering Information

Part Number	Package
CH-132 BNC	Connectorized
CH-132 N	Connectorized
CH-132 SMA	Connectorized
CH-132 TNC	Connectorized

## Typical Performance Curves

